

## Key Design Features

- Synthesizable, technology independent IP Core for FPGA and ASIC
- Supplied as human readable VHDL (or Verilog) source code
- Phillips® I2C-bus compliant
- User defined I2C slave address
- Configurable number of 8-bit read/write configuration registers up to a maximum of 128
- Configurable number of 8-bit read-only status registers up to a maximum of 128
- Features standard I2C register addressing common to most I2C peripherals
- Fully configurable clocking allows Standard (100kHz), Fast (400kHz) and custom data rates exceeding 20 MHz
- Compatible with a wide range of I2C master devices such as Micro-controllers and COTs ICs

## Applications

- I2C slave communication
- Inter-chip board-level communications
- Standard 2-wire comms between a wide range of I2C peripherals, micro-controllers and COTs ICs.

## Pin-out Description

Pin name	I/O	Description	Active state
clk	in	Synchronous clock	rising edge
reset	in	Asynchronous reset	low
scl	in	I2C input SCL clock pin	as per I2C specification
sda	i/o	I2C bi-directional SDA data pin	as per I2C specification
ad_flag	out	Address register write flag	pulse high
wr_flag	out	Config register write flag	pulse high
rd_flag	out	Config register read flag	pulse high
ro_flag	out	Status register read flag	pulse high
config [num_config*8 - 1:0]	out	Configuration register output bits	data
status [num_status*8 - 1:0]	in	External status register input bits	data

## Block Diagram

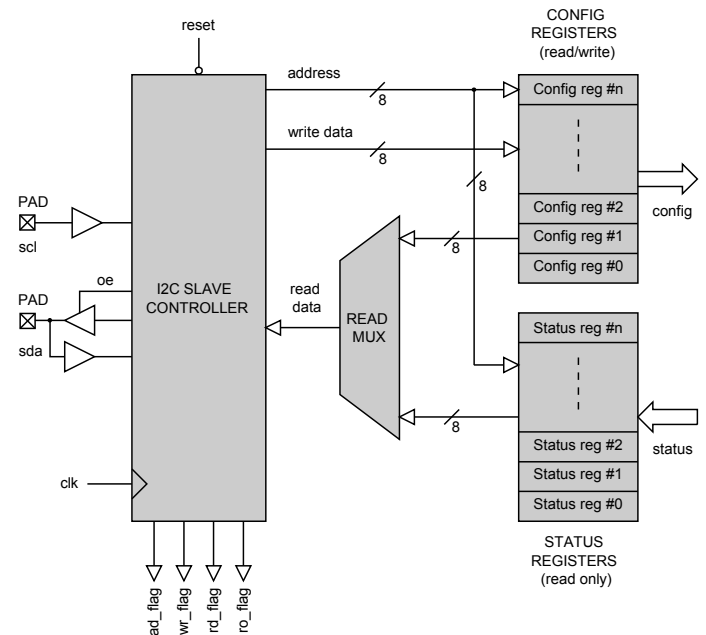


Figure 1: I2C slave serial interface controller architecture

## Generic Parameters

Generic name	Description	Type	Valid range
num_config	Number of configuration registers	integer	$2 \leq \text{regs} \leq 128$
num_status	Number of Status registers	integer	$2 \leq \text{regs} \leq 128$
slave_address	8-bit slave address of the device on the I2C bus (LSB is don't care)	std_logic vector	"0000000X" to "1111111X"

## General Description

The I2C\_SLAVE IP Core is a Philips® I2C compliant slave interface controller. The controller decodes the SCL and SDA bus signals and converts them into a simple series of 8-bit read/write commands for accessing a set of user-defined registers. These registers are defined as either *configuration* registers or *status* registers.

Config registers provide general purpose read/write bits for the control of external logic. Status registers are read-only and allow the state of external pins to be monitored via the I2C interface. Both the config and status bits are visible at the controller top-level ports.

The SCL port is an input driven by the I2C Master. The SDA port is connected to a bi-directional tristate buffer. When the I2C controller is inactive, both the SCL and SDA lines will be in a high impedance (high-Z) state.

Note: The SCL and SDA pins should have external (or internal) pullups as per the I2C specification.

The I2C slave controller is comprised of three main blocks as described by Figure 1. These blocks are the I2C Slave Controller core the Configuration register bank and the Status register bank.

### I2C Slave Controller Core

The slave controller core is a state-machine that continually monitors the state of the SCL and SDA lines and generates the appropriate signals on the I2C bus.

In order for the slave to function correctly the system clock frequency to SCL clock frequency must have a ratio of 8:1 or greater. That is, the following formula must be satisfied such that:

$$f_{CLK} \geq f_{SCL} * 8$$

$$f_{CLK} = \text{system clock frequency (Hz)}$$

$$f_{SCL} = \text{I2C clock frequency (Hz)}$$

To begin a data transfer, the state machine looks for a start command which is defined by a stable SCL high signal with a falling SDA line. On receipt of a start command, the slave will latch the slave address and the r/w flag over the next eight consecutive bits.

If the slave address on the bus corresponds to the generic parameter *slave\_address*, then the controller will generate an acknowledge signal and a data transfer may commence. If the slave address mismatches, then the controller will not acknowledge the master and it will revert back to it's idle state waiting for the next start condition.

Once the controller has been addressed correctly, the master may send one of two possible commands to the slave. These commands are either a register write or a register read. The I2C command sequences understood by the slave controller are summarized by Figure 2 opposite.

### Configuration and Status Register banks

The number of configuration registers accessible by the slave controller is specified in the generic parameter *num\_config*. Likewise, the number of status registers is specified in the *num\_status* generic.

Configuration registers are read/write addressable, while status registers are read-only. Both types of registers are 8-bits wide with a maximum of 128 registers in each bank.

The type of register accessed is determined by the MSB of the register address that is latched in the I2C command sequence (see Figure 2). This means that the addresses from 0x00 to 0x7F access the configuration register bank and the addresses from 0x80 to 0xFF are the status register bank.

If the I2C master writes to a register address that doesn't exist then nothing will happen. Reading a register that doesn't exist will result in the value 0xFF being returned on the I2C bus.

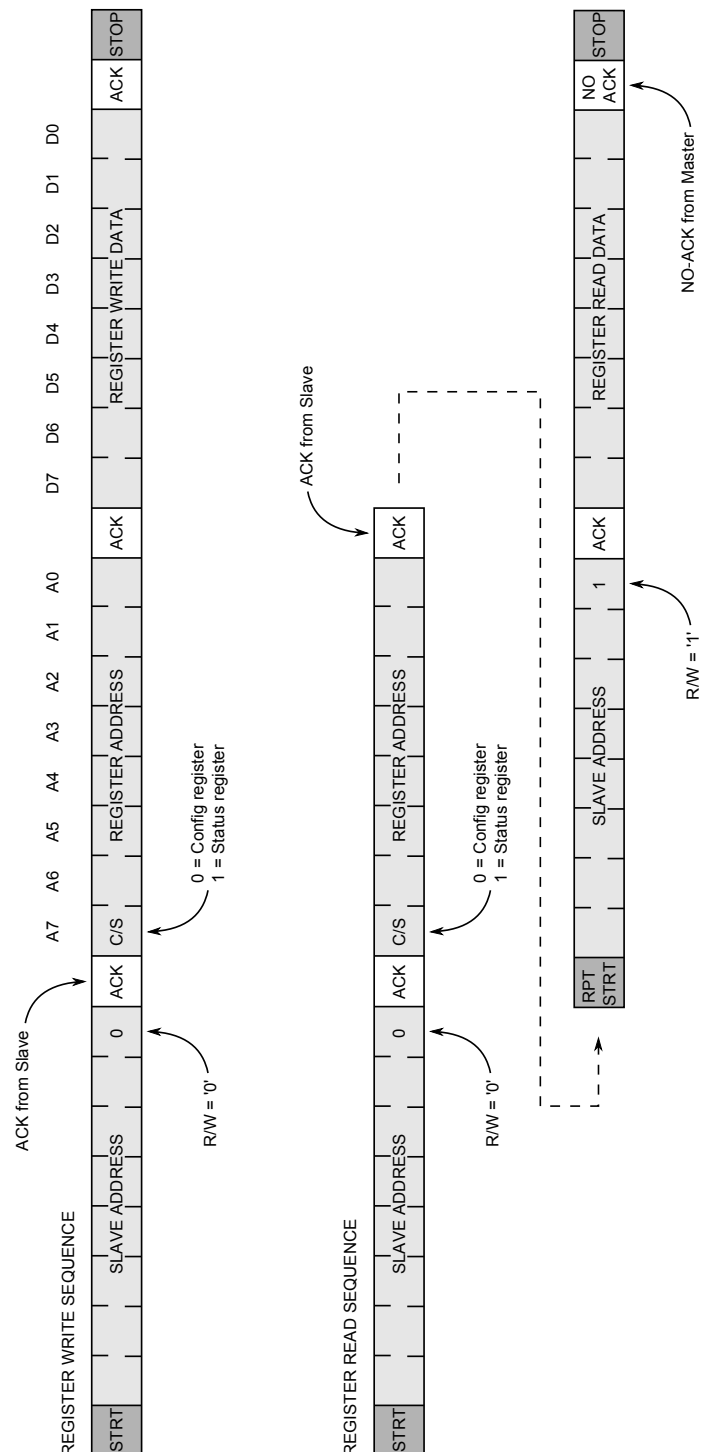


Figure 2: I2C command sequence for a register byte write and a register byte read

## Functional Timing

The slave controller IP Core accepts standard I2C bus timing. However, in order to avoid spurious START and STOP commands being decoded then the SDA line should only change on the SCL falling edge.

The SDA line should have a positive hold time ( $t_h$ ) relative to the SCL falling edge. It is recommended that this hold time is equal to at least one system clock cycle. In addition, the SCL line should have a 50-50 duty cycle +/- 10%.

The I2C timing specifications are shown in Figure 3 below.

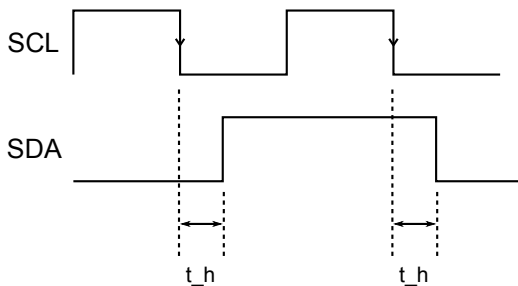


Figure 3: I2C bus timing specifications

## Source File Description

All source files are provided as text files coded in VHDL. The following table gives a brief description of each file.

Source file	Description
i2c_slave_stim.txt	Input stimulus text file
i2c_inbuf.vhd	Input buffer
i2c_iobuf.vhd	Bi-directional tristate buffer
i2c_config_bank.vhd	Configuration register bank
i2c_status_bank.vhd	Status register bank
i2c_slave_cont.vhd	Main I2C slave controller
i2c_slave.vhd	Top-level block
i2c_slave_file_reader.vhd	Reads the I2C bus signals from a text file
i2c_slave_bench.vhd	Top-level test bench

## Functional Testing

An example VHDL test bench is provided for use in a suitable VHDL simulator. The compilation order of the source code is as follows:

1. i2c\_inbuf.vhd
2. i2c\_iobuf.vhd
3. i2c\_config\_bank.vhd
4. i2c\_status\_bank.vhd
5. i2c\_slave\_cont.vhd
6. i2c\_slave.vhd
7. i2c\_slave\_file\_reader.vhd
8. i2c\_slave\_bench.vhd

The VHDL test bench instantiates the i2c\_slave component together with a file-reader module that reads the I2C bus signals from a text file. The I2C slave address may be modified by changing the generic setting *slave\_address* on the slave controller component. The I2C clock frequency can be modified by changing the *t\_period* generic on the file reader component. The value *t\_period* is a clock divider setting that specifies the system clock to SCL clock ratio.

The input text file is called *i2\_slave\_stim.txt* and should be put in the current top-level VHDL simulation directory.

The I2C bus signalling is split into 4 phases on 4 consecutive lines. Each line is comprised of two bits in the format 'A B' where 'A' specifies the state of the SCL line and 'B' is the state of the SDA line. The values 'A' and 'B' can either be specified as '0' (logic 0), '1' (logic '1') or 3 (tristate).

As an example, in order to send a start command, the text file should read:

```
0 1 # SCL = 0, SDA = 1
1 1 # SCL = 1, SDA = 1
1 0 # SCL = 1, SDA = 0
1 0 # SCL = 1, SDA = 0
```

To send a single bit (in this case a '1') the text file may be written as:

```
0 1 # SCL = 0, SDA = 1
0 1 # SCL = 0, SDA = 1
1 1 # SCL = 1, SDA = 1
1 1 # SCL = 1, SDA = 1
```

In addition to setting up the input stimulus file with the desired I2C commands, the user may also modify the generic parameters on the I2C slave component as required.

In the default set up, the simulation must be run for around 10 ms during which time the file-reader module will drive the I2C bus with the input commands required to write and read all the config registers followed by a read of all status registers.

The simulation generates the text file *i2c\_slave\_out.txt* which samples the state of the SDA line on the rising SCL clock edge. The contents of this file may be examined to verify the operation of the I2C slave controller.

## Synthesis and Implementation

The files required for synthesis and the design hierarchy is shown below:

- i2c\_slave.vhd
  - i2c\_slave\_cont.vhd
  - i2c\_config\_bank.vhd
  - i2c\_status\_bank.vhd
  - i2c\_jobuf.vhd
  - i2c\_inbuf.vhd

The VHDL core is designed to be technology independent. However, as a benchmark, synthesis results have been provided for the Xilinx® 7-series FPGAs. Synthesis results for other FPGAs and technologies can be provided on request.

There are no special constraints required for the synthesis and implementation of the design. Trial synthesis results are shown with the generic parameters set to: num\_config = 8, num\_status = 8. slave\_address = 0xD4.

Resource usage is specified after place and route of the design.

### XILINX® 7-SERIES FPGAS

Resource type	Artix-7	Kintex-7	Virtex-7
Slice Register	112	176	176
Slice LUTs	249	457	457
Block RAM	0	0	0
DSP48	0	0	0
Occupied Slices	93	199	186
Clock freq. (approx)	350 MHz	450 MHz	550 MHz

## Revision History

Revision	Change description	Date
1.0	Initial revision	09/10/2008
1.1	Updated synthesis results for Xilinx® 6 series FPGAs	31/05/2012
2.0	Major release. General architecture change based on config and status registers. Updated synthesis results for Xilinx® 7 series FPGAs	14/06/2015

## X-ON Electronics

Largest Supplier of Electrical and Electronic Components

*Click to view similar products for [Development Software](#) category:*

*Click to view products by [Zipcores](#) manufacturer:*

Other Similar products are found below :

[SRP004001-01](#) [SW163052](#) [SYSWINEV21](#) [WS01NCTF1E](#) [W128E13](#) [SW89CN0-ZCC](#) [IP-UART-16550](#) [MPROG-PRO535E](#) [AFLCF-08-](#)  
[LX-CE060-R21](#) [WS02-CFSC1-EV3-UP](#) [SYSMAC-STUDIO-EIPCPLR](#) [1120270005](#) [SW006021-2H](#) [ATATMELSTUDIO](#) [2400573](#) [2702579](#)  
[2988609](#) [SW006022-DGL](#) [2400303](#) [88970111](#) [DG-ACC-NET-CD](#) [55195101-101](#) [55195101-102](#) [SW1A-W1C](#) [MDK-ARM](#) [SW006021-2NH](#)  
[B10443](#) [SW006021-1H](#) [SW006021-2](#) [SW006022-2](#) [SW006023-2](#) [SW007023](#) [MIKROE-730](#) [MIKROE-2401](#) [MIKROE-499](#) [MIKROE-722](#)  
[MIKROE-724](#) [MIKROE-726](#) [MIKROE-728](#) [MIKROE-732](#) [MIKROE-734](#) [MIKROE-736](#) [MIKROE-738](#) [MIKROE-744](#) [MIKROE-928](#)  
[MIKROE-936](#) [1120270002](#) [1120270003](#) [1120275015](#) [NT-ZJCAT1-EV4](#)