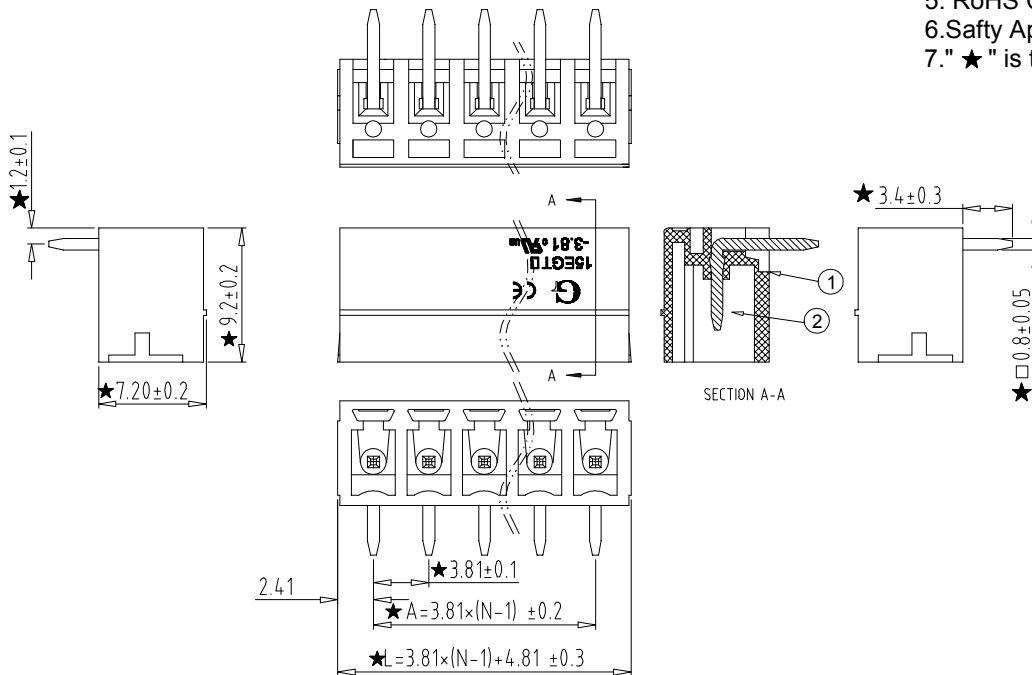


**Electrical :**

- |  |                |      |
|--|----------------|------|
|  | UL             | IEC  |
| 1. Rated Voltage :                       | 300V           | 250V |
| 2. Rated Current :                       | 8A             | 7A   |
| 3. Withstanding Voltage :                | AC1600V/1Min;  |      |
| 4. Operating Temperature :               | -40 °C~+105°C; |      |
| 5. RoHS Compliance;                      |                |      |
| 6. Safety Approval :                     | cULus          |      |
| 7. "★" is the key quality control point. |                |      |



15EGTRC - 3.81 -XXP - X X - 00

- |   |   |   |  |
|---|---|---|--|
| ① | Series NO.  | ④ | 1 Single Pitch<br>2 Double Pitch   |
| ② | Pitch   | ⑤ | Color: 1 Grey<br>2 Blue<br>3 Black<br>4 Green<br>5 Orange<br>6 Red<br>7 Transparent<br>8 Yellow<br>9 White |
| ③ | Poles<br>02 02Contacts<br>03 03Contacts<br>...<br>24 24Contacts | ⑥ | Customer Request: 00--Standard   |

Total Pitch Tolerances in mm										Nominal dimension range in mm										±	≡	-	//		
over	over	over	over	over	over	over	over	over	over	over	over	over	over	over	over	over	over	over	over	over	over	over	over		
0	30	53	70	90	115	150	250	350	500	0	30	53	70	90	115	150	200	250	320	0	10	all	0	100	150
±0.18	±0.20	±0.25	±0.3	±0.35	±0.44	±0.60	±0.70	±0.85	±0.20	±0.25	±0.30	±0.35	±0.44	±0.55	±0.70	±0.80	±0.90	±0.2	0.3	0.3	0.3	0.2	0.3	0.3	0.5

			OPERATION		SCALE		Fit		东莞市宇熙精密连接器有限公司 www.yxcon.com Dongguan Yuxi Electronic Co.,Ltd.			
			X.X	±0.25	UNIT		MM					
			X.XX	±0.20	SIZE	A4	DESIGN	赵文品2024.10.15	PART NO.	15EGTRC-3.81-XXP-XX-00		
			X.XXX	±0.10	SHEET	1/1	CHECK		TITLE:			
REV	DATE	SYMBOL	MODIFICATION DESCRIPTION		DIAM	TOL	APPROVE		Customer No.			

由 Autodesk 教育版产品制作

## X-ON Electronics

Largest Supplier of Electrical and Electronic Components

*Click to view similar products for [Pluggable Terminal Blocks](#) category:*

*Click to view products by [Yxcon](#) manufacturer:*

Other Similar products are found below :

[57.510.0053](#) [721-104/026-047](#) [721-204/026-045](#) [ET02015000J0G](#) [860505](#) [860516](#) [GBPACX-12](#) [93.731.4953.0](#) [950-FB/03](#) [950-NLFL-DS/03](#) [PVS02-5,00](#) [1-1986160-3](#) [121-A-111/03](#) [121-A-111/05](#) [121-M-121/04](#) [121-M-211/03](#) [121-M-221/06](#) [1377680000](#) [1546228-5](#) [ELFP03110](#) [ELFT07250](#) [ELXH071G0E](#) [1725220000](#) [1760336](#) [1855000000](#) [19346](#) [1946309](#) [1973592](#) [2-1546857-6](#) [231-110/031-000](#) [25.320.4053.1](#) [25.320.4553.9](#) [25.320.4753.1](#) [25.340.0353.1](#) [25.340.1053.1](#) [25.345.3553.0M001](#) [25.640.3553.1](#) [931-HSL/03-HT](#) [950-FL-DS/04](#) [950-LH-DS/02](#) [950-NLFL-DS/06](#) [SH04-3,50](#) [SH08-5,08](#) [SH08-5,08-K](#) [SH12-5,08](#) [SH15-5,00](#) [SHS04-5,00](#) [30.303](#) [30.305](#) [30.306](#)