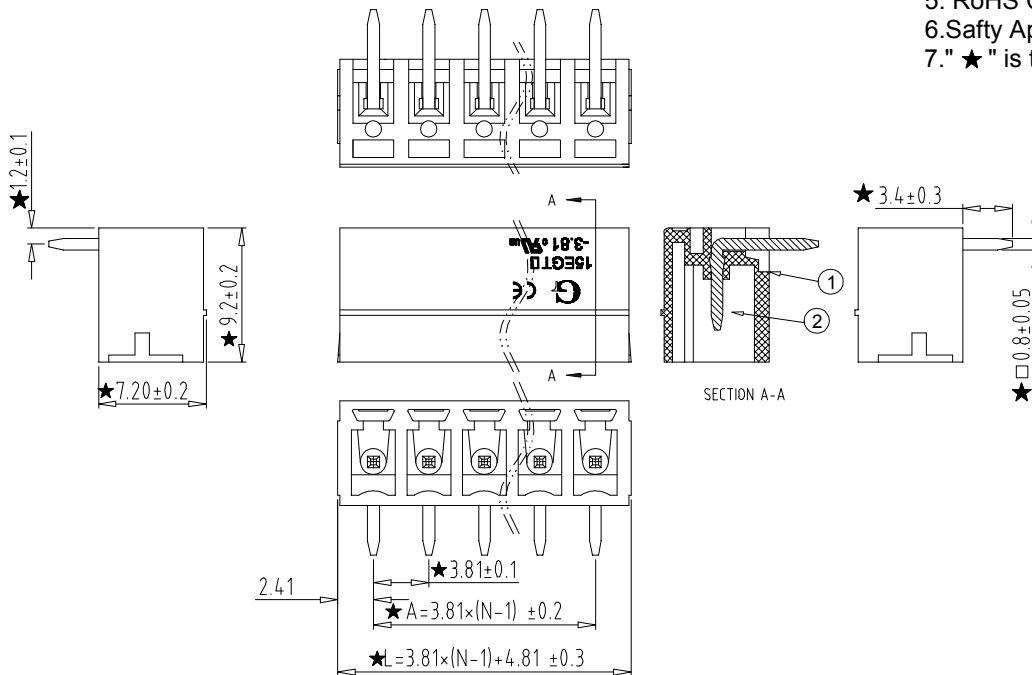


Electrical :

- | | | |
|--|----------------|------|
| | UL | IEC |
| 1. Rated Voltage : | 300V | 250V |
| 2. Rated Current : | 8A | 7A |
| 3. Withstanding Voltage : | AC1600V/1Min; | |
| 4. Operating Temperature : | -40 °C~+105°C; | |
| 5. RoHS Compliance; | | |
| 6. Safety Approval : | cULus | |
| 7. "★" is the key quality control point. | | |



15EGTRC - 3.81 -XXP - X X - 00

- | | |
|---|---|
| ① Series NO. | ④ 1 Single Pitch
2 Double Pitch |
| ② Pitch | ⑤ Color: 1 Grey
2 Blue
3 Black
4 Green
5 Orange
6 Red
...
7 Transparent
8 Yellow
9 White |
| ③ Poles
02 02Contacts
03 03Contacts
...
24 24Contacts | ⑥ Customer Request: 00--Standard |

Total Pitch Tolerances in mm										Nominal dimension range in mm										±	≡	-	//							
over 0	over 30	over 53	over 70	over 90	over 115	over 150	over 250	over 350	over 500	over 0	over 30	over 53	over 70	over 90	over 115	over 150	over 200	over 250	over 320	over 0	over 10	over 100	over 150	0.2	0.3	0.3	0.2	0.3	0.5	
to 30	to 53	to 70	to 90	to 115	to 150	to 250	to 350	to 500		to 30	to 53	to 70	to 90	to 115	to 150	to 200	to 250	to 320		to 10	to 100	to 150								
±0.18	±0.20	±0.25	±0.3	±0.35	±0.44	±0.60	±0.70	±0.85	±0.20	±0.25	±0.30	±0.35	±0.44	±0.55	±0.70	±0.80	±0.90													

			OPERATION		SCALE		Fit		东莞市宇熙精密连接器有限公司 www.yxcon.com Dongguan Yuxi Electronic Co.,Ltd.			
			X.X	±0.25	UNIT		MM					
			X.XX	±0.20	SIZE	A4	DESIGN	赵文品2024.10.15	PART NO.	15EGTRC-3.81-XXP-XX-00		
			X.XXX	±0.10	SHEET	1/1	CHECK		TITLE:			
REV	DATE	SYMBOL	MODIFICATION DESCRIPTION		DIAM	TOL	PROJ.	APPROVE	Customer No.			

由 Autodesk 教育版产品制作

X-ON Electronics

Largest Supplier of Electrical and Electronic Components

Click to view similar products for [Pluggable Terminal Blocks](#) category:

Click to view products by [Yxcon](#) manufacturer:

Other Similar products are found below :

[57.510.0053](#) [721-104/026-047](#) [721-204/026-045](#) [ET02015000J0G](#) [860505](#) [860516](#) [GBPACX-12](#) [93.731.4953.0](#) [950-FB/03](#) [950-NLFL-DS/03](#) [PVS02-5,00](#) [1-1986160-3](#) [121-A-111/03](#) [121-A-111/05](#) [121-M-121/04](#) [121-M-211/03](#) [121-M-221/06](#) [1377680000](#) [1546228-5](#) [ELFP03110](#) [ELFT07250](#) [ELXH071G0E](#) [1725220000](#) [1760336](#) [1855000000](#) [19346](#) [1946309](#) [1973592](#) [2-1546857-6](#) [231-110/031-000](#) [25.320.4053.1](#) [25.320.4553.9](#) [25.320.4753.1](#) [25.340.0353.1](#) [25.340.1053.1](#) [25.345.3553.0M001](#) [25.640.3553.1](#) [931-HSL/03-HT](#) [950-FL-DS/04](#) [950-LH-DS/02](#) [950-NLFL-DS/06](#) [SH04-3,50](#) [SH08-5,08](#) [SH08-5,08-K](#) [SH12-5,08](#) [SH15-5,00](#) [SHS04-5,00](#) [30.303](#) [30.305](#) [30.306](#)