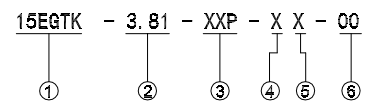
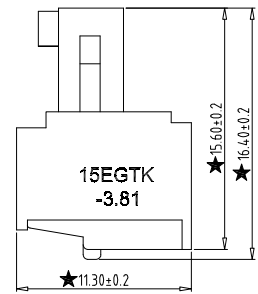
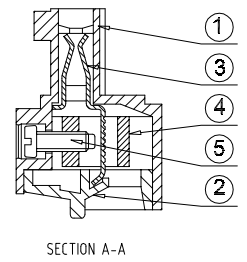
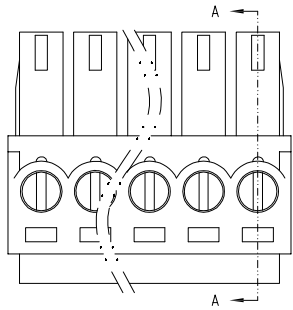
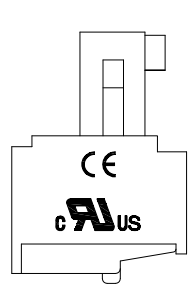
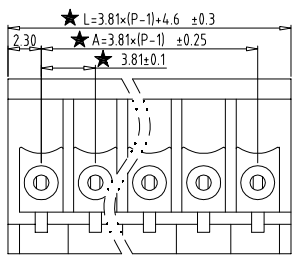


Electrical :

- 1. Rated Voltage : 300V (UL) 250V (IEC)
- 2. Rated Current : 8A 7A
- 3. Torque Value : M2, 1.77Lb.in M2, 0.2N.m
- 4. Wire Range : 28-16AWG 0.5-1.5mm²
- 5. Stripping Length : 6-7mm
- 6. Withstanding Voltage : AC1600V/1Min.
- 7. Operating Temperature : -40°C~+105°C
- 8. RoHS Compliance
- 9. Safety Approval : CE
- 10. "★" is the key quality control point



- ① Series NO. ④ 1 Single Pitch 2 Double Pitch
- ② Pitch ⑤ Color: 1 Grey 2 Blue 3 Black 4 Green 5 Orange 6 Red 7 Transparent 8 Yellow 9 White
- ③ Poles 02 02Contacts 03 03Contacts ... 24 24Contacts
- ⑥ Customer Request: 00-Standard



Total Pitch Tolerances in mm										Nominal dimension range in mm										⊥	=	-	//
over	over	over	over	over	over	over	over	over	over	over	over	over	over	over	over	over	over	over	over	0	over	over	over
0	30	53	70	90	115	150	250	350	500	0	30	53	70	90	115	150	200	250	320	to	to	to	to
±0.18	±0.20	±0.25	±0.3	±0.35	±0.44	±0.60	±0.70	±0.85	±0.20	±0.25	±0.30	±0.35	±0.44	±0.55	±0.70	±0.80	±0.90	0.2	0.3	0.3	0.2	0.3	0.5

REV	DATE	SYMBOL	MODIFICATION DESCRIPTION	OPERATION	SCALE	Fit	Yxcon 东莞市宇熙精密连接器有限公司			
				X.X ±0.25	UNIT	MM	www.yxcon.com Dongguan Yuxi Electronic Co.,Ltd.			
				X.XX ±0.20	SIZE	A4	DESIGN	赵文品2024.10.10	PART NO	15EGTK-3.81-XXP-XX-00
				X.XXX ±0.10	SHEET	1/1	CHECK		TITLE	
				Angle ±3°	PROJ.	⊕	APPROVE		Customer No.	
				DIM TOL						

由 Autodesk 教育版产品制作

X-ON Electronics

Largest Supplier of Electrical and Electronic Components

Click to view similar products for [Pluggable Terminal Blocks](#) category:

Click to view products by [Yxcon](#) manufacturer:

Other Similar products are found below :

[57.510.0053](#) [721-104/026-047](#) [721-204/026-045](#) [ET02015000J0G](#) [860505](#) [860516](#) [GBPACX-12](#) [93.731.4953.0](#) [950-FB/03](#) [950-NLFL-DS/03](#) [PVS02-5,00](#) [1-1986160-3](#) [121-A-111/03](#) [121-A-111/05](#) [121-M-121/04](#) [121-M-211/03](#) [121-M-221/06](#) [1377680000](#) [1546228-5](#) [ELFP03110](#) [ELFT07250](#) [ELXH071G0E](#) [1725220000](#) [1760336](#) [1855000000](#) [19346](#) [1946309](#) [1973592](#) [2-1546857-6](#) [231-110/031-000](#) [25.320.4053.1](#) [25.320.4553.9](#) [25.320.4753.1](#) [25.340.0353.1](#) [25.340.1053.1](#) [25.345.3553.0M001](#) [25.640.3553.1](#) [931-HSL/03-HT](#) [950-FL-DS/04](#) [950-LH-DS/02](#) [950-NLFL-DS/06](#) [SH04-3,50](#) [SH08-5,08](#) [SH08-5,08-K](#) [SH12-5,08](#) [SH15-5,00](#) [SHS04-5,00](#) [30.303](#) [30.305](#) [30.306](#)