

**YSL60C-60** SERIES



**Input: 220-240V 50/60Hz**  
**Output Voltage: 12V,24V,36V,48V**  
**Rated Power: 60W max**

**Features**

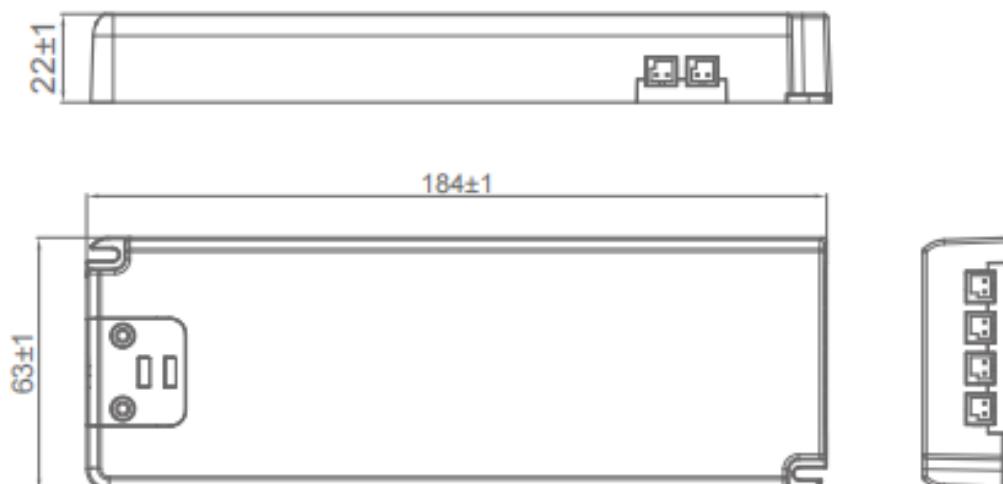
- Independent Ultrathin Power Supply
- flicker-free Design
- Terminal block for Quick Connection
- Protections: Over Voltage, Overload, Short Circuit
- Class II Protection Design
- ERP :EU2019/2020



**Application**

- LED strips
- LED indoor lighting
- LED decorative lighting
- LED building lighting

**■ Dimensions and Installation**

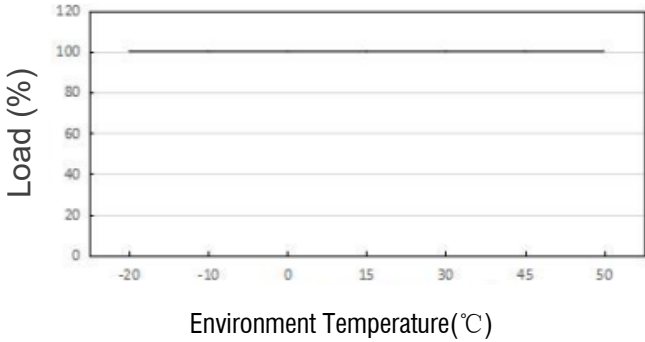


**YSL60C-60 SERIES**

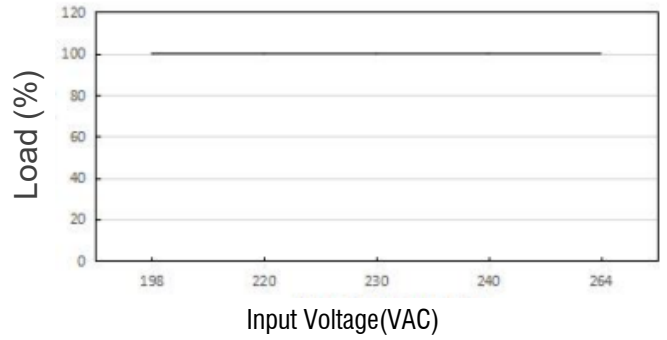
MODEL DETAIL SPEC.		YSL60C-1205000	YSL60C-2402500	YSL60C-3601670	YSL60C-4801250
INPUT	Input Voltage:	220-240VAC			
	Range of Input Voltage:	198-264VAC			
	Input Frequency:	50/60Hz			
	Input Current:	0.4AMAX@Full Load			
	Inrush Current:	< 65 Amps at 230VAC/50Hz@full load			
	Leakage Current:	< 0.25mA/240VAC			
	THD (Full load):	< 20%			
	Unload Power Consumption:	< 0.5W			
	Efficiency:	92%			
	Power Factor:	≥0.9@Full Load 220-240VAC			
OUTPUT	DC Voltage:	12V	24V	36V	48V
	Rated Current(Max):	5A	2.5A	1.67A	1.25A
	Rated Power(Max):	60W	60W	60W	60W
	Voltage Tolerance:	±5%			
	Ripple and Noise:	400mVp-p	400mVp-p	400mVp-p	400mVp-p
	Line Regulation:	±3%			
	Load Regulation:	±5%			
	Setup, Rise, Hold Up Time:	1s, 10ms/60ms 230VAC @ full load			
ENVIRONMENTAL	Operating Temperature Ta:	-20°C ~ +45°C			
	Storage Temp:	-40°C ~ +85°C			
	Maximum Case Temperature Tc:	+85°C			
	Humidity:	20 ~ 95% RH			
	Lifetime:	>30000hours@ta 40°C			
PROTECTION	Over Load:	Yes , Protection type: Auto Restore Protection type: Hiccup mode, recovers automatically after fault condition is removed			
	Over Voltage:	Yes , Protection type: Auto Restore Protection type: Shut down o/p voltage, re-power on to recover			
	Short Circuit:	Yes , Protection type: Auto Restore			
SAFETY & EMC	Safety Regulations:	EN61347-2-13:2014+A1:2017,EN61347-1:2015+A1:2021;EN62493:2015			
	Withstand Voltage:	I/P-O/P:3750VAC			
	Harmonic:	EN61000-3-2 Class C EN61000-3-3			
	EMI:	Compliance to EN55015			
	EMS:	Compliance to EN61547:2009			
OTHER	MTBF:	200,000 Hours Minimum at Full Load at 25°C Ambient			
	Case Material and Size:	Plastic			
	IP Grade:	IP20			
	Size:	184*63*22mm			
	Weight:	200g / pcs			
Packaging:	100PCS/CTN				

**YSL60C-60 SERIES**

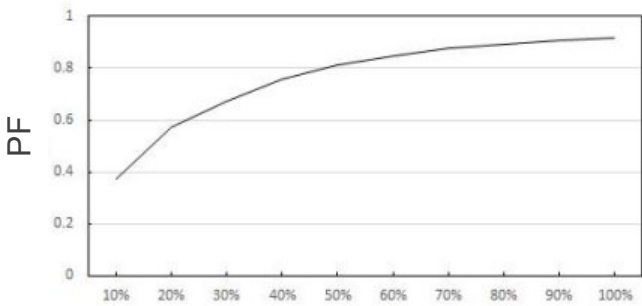
**Deduction Curve and Temperature**



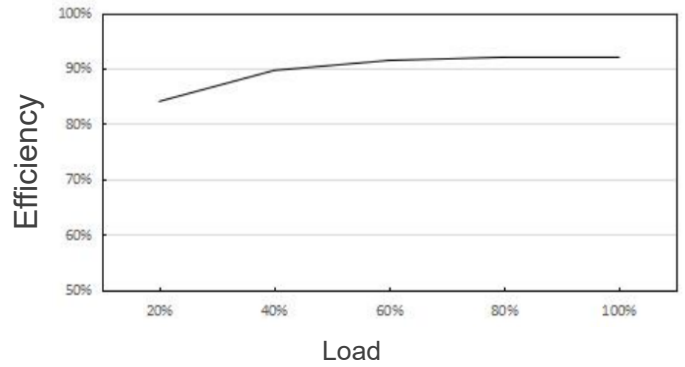
**Minus Output and Input Voltage Curves**



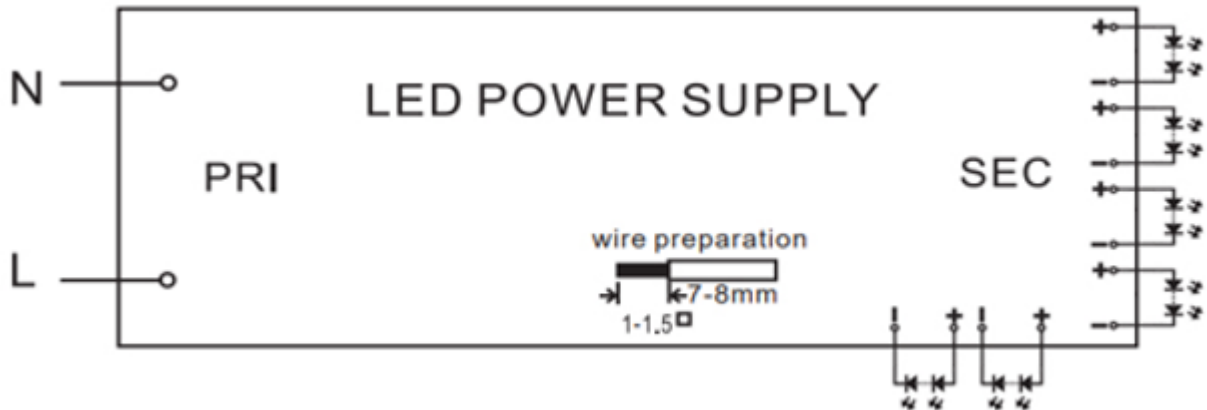
**Power Factor (PF) Curves**



**Efficiency Vs Load**



**Wiring Diagram**



**Manufacturer's address:**

Cuijia, Xidian Town, Ninghai, Ningbo 315613, China

Tel: +86-574-87563856

<https://www.yingjiaodriver.com>

## X-ON Electronics

Largest Supplier of Electrical and Electronic Components

*Click to view similar products for [LED Power Supplies](#) category:*

*Click to view products by [Yingjiao](#) manufacturer:*

Other Similar products are found below :

[PIFC-K250F](#) [PITB-K222A](#) [ALD-514012PJ134](#) [OECCDD02-350](#) [OECCDD02-700](#) [OECCDD02-300](#) [OECCDD02-450](#) [OECCDD02-600](#)  
[ESS015W-1000-12](#) [ESS030W-1050-21](#) [SLM140W-1.05-130-ZA](#) [ESS015W-0700-18](#) [OTE 25/220-240/700 PC](#) [OT FIT 30/220-240/700 CS](#)  
[CNB50W-1200-42-CAS](#) [87500757](#) [LCU 48V 75W DC-STR FO](#) [LC 45 W 500-1400 MA FLEXC SC EXC](#) [I-SELECT 2 PLUG 2000MA BL](#)  
[LC 50/200-350/170 FLEXCC LP SNC3](#) [LCO 14/100-500/38 O4A NF C EXC3](#) [LCA 60W 900-1750MA ONE4ALL C PRE](#) [LC 8/180/44 FIXC](#)  
[SR SNC2](#) [LC 19/200-350/54 FLEXC LP SNC4](#) [BXDR-PS-75BS-E116D-01-A](#) [LC 30/500/54 FIXC SR SNC2](#) [LCA 60W 24V ONE4ALL SC](#)  
[PRE SP](#) [LC 60W 75-330MA 310V FLEXC NF H16 EXC4](#) [LC 8/180/42 FIXC PC SR SNC2](#) [LC 10/350/29 FIXC SR SNC2](#) [LC 50/100-](#)  
[400/140 PO4A NF H16 PRE3](#) [LC 25/600/42 FIXC SRL ADV2](#) [LCO 24/200-1050/39 NF C ADV3](#) [ELEMENT 35/220...240/900 G3](#) [LC 25W](#)  
[350-1050MA FLEXC SR EXC](#) [LC 35W 24 ONE4ALL IP PRE](#) [BXDR-PS-25BS-E107D-01-A](#) [LC 17W 250-700MA FLEXC SR EXC](#) [LC](#)  
[14W 700MA FIXC PC SR SNC2](#) [LC 200W 24V SC SNC](#) [LC 65W 200-350MA 210V FLEXC LP SNC4](#) [LC 60/1400/43 FIXC SR SNC2](#) [LC](#)  
[75W 250-400MA 220V O4A LP ADV](#) [4880](#) [PWM-60-24DA2](#) [PWM-90-48DA2](#) [8538](#) [LC 165/400-700/320 FLEXC LP SNC4](#) [LCO 40W](#)  
[200-1050MA 64V O4A NF C EXC3](#) [LCI 150/250-1050/300 PD NF H28 PRE4](#)