



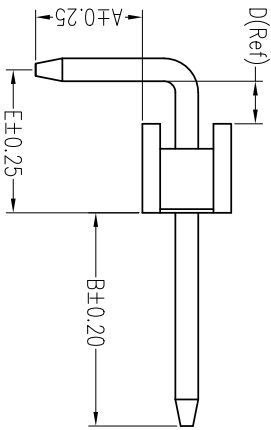
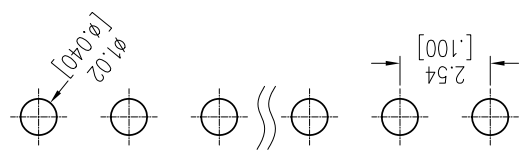
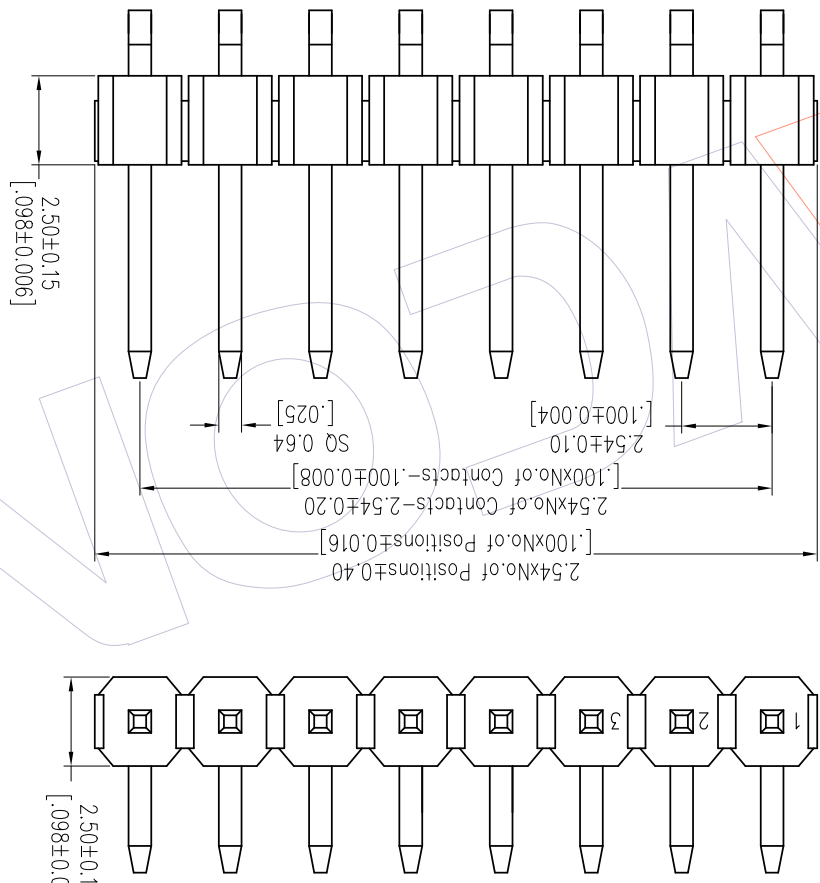
NOTES:
 Rated Current: 3.0AMP.
 Rating Voltage: 250V AC/DC
 Contact Resistance: 20mΩ Max.
 Withstand Voltage: 1000V AC/DC
 Insulation Resistance: 1000MΩ Min.
 Operation Temperature: -40°C to +105°C
 Contact Material: Brass
 Contact Plating: Au or Sn Over Ni
 Insulator Material: PA9T+33%G.F UL94V-0 BK

Ordering Information

1125-11 XX XX R XXX C 0 XX
 A2
 A1

No. of Pins Contact Plating Pin Length Insulator Packing Series No.
 02-40 G0=Gold Flash L=A+B+D+3.75 Material 0=PE Bag 01-99
 G3=10u"Gold Standard:110=11.0 C=PA9T T=Tube
 G4=15u"Gold 140=14.0
 G5=30u"Gold 148=14.8
 S0=Gold Flash/Tin
 S3=10u"Gold/Tin
 S4=15u"Gold/Tin
 S5=30u"Gold/Tin
 SN=Tin
 SM=Mate Tin

Item	Pin Length	A	E	B	Mating
Standard	14.00	3.00	4.02	6.00	2171 2185
Alternate	14.80	3.00	4.82	6.00	2171 2185



REV	DATE	MODIFICATION DESCRIPTION	CHANGE	DIM	TOL	OPERATION	DRAW	DATE	SCALE	FIT	PART NO.
A0	2012/05/17	NEW	---	Angle ± .3°	± .3°	APPROVE	DATE	DATE	SHEET	PROJ.	Customer NO.
A1	2018/01/22	Modify P/N	A1	X.XX ±0.15	±0.15	CHECK	DATE	DATE	SIZE		
A2	2018/06/02	Cancel P/B & Modify P/N	A2	X.XX ±0.40	±0.40	OPERATION	DATE	DATE	UNIT	mm	1125-11XXXXRXXXXC0XX A1 A2

WCON
 WCON-Dongguan
 WCON-Kunshan
 Tel: +86 769 85358920
 Fax: +86 769 85358915
 E-mail: sdles@wcon.com

Recommended P.C.B Layout (Top Side)
 (PCB BOARD TOLERANCE±0.05)

X-ON Electronics

Largest Supplier of Electrical and Electronic Components

Click to view similar products for [Headers & Wire Housings](#) category:

Click to view products by [Wcon](#) manufacturer:

Other Similar products are found below :

[95000-104TRLF](#) [10135584-644402LF](#) [DF62W-EP2022PCA](#) [95000-106TRLF](#) [DF62W-2022SCA](#) [DF62W-EP2022PC](#) [2203348](#) [DF62W-2022SC](#) [1084018](#) [1029039](#) [1084017](#) [802-10-012-10-002000](#) [1112640](#) [1112639](#) [891-007-9SS-BST1T](#) [000-34000](#) [0008550134](#) [0009482033](#) [0009507031](#) [57102-F02-18ULF](#) [57102-S06-03LF](#) [57202-S52-04LF](#) [PCN6-15S-2.5E](#) [0039019024](#) [58102-G61-06LF](#) [582553-1](#) [0009485154](#) [0009508121](#) [0022285053](#) [0050291907](#) [018731A](#) [LY20-4P-DT1-P1E-BR](#) [02.125.8002.8](#) [60101931](#) [60598-1 \(Cut Strip\)](#) [M1625-3R/100](#) [61062-3](#) [61082-181009](#) [CSU011177004](#) [636-1427](#) [638009-1](#) [641938-9](#) [641991-4](#) [644168-1](#) [644827-2](#) [647662-1](#) [65039-019ELF](#) [65692-001LF](#) [65781-018](#) [65781-047](#)