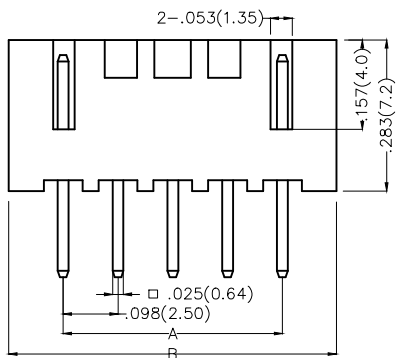
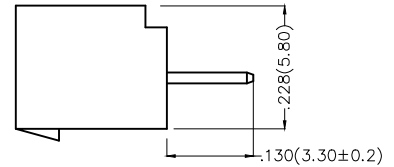
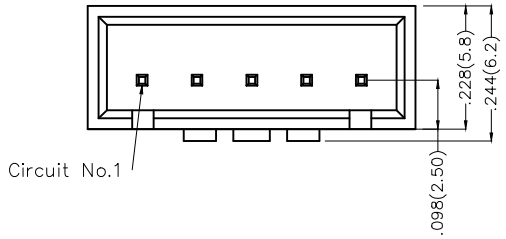


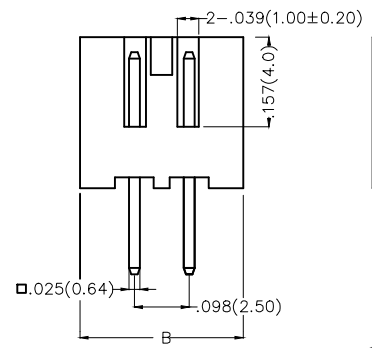
REV	LOCATIONS	DESCRIPTION	DATE	REVISER	APPD

Electrical
 Current Rating: 3.0A AC(rms)/DC
 Voltage Rating: 250V AC(rms)/DC
 Contact Resistance: 20 mΩ Max
 Insulation Resistance: 1000 MΩ MIN
 Withstanding Voltage: 1000V AC r.m.s
 Temperature Range—Operating: -25°C~+85°C

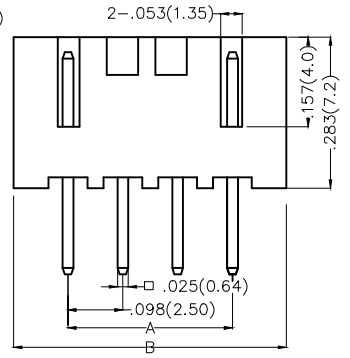
Material and Plating
 Housing: PA66(UL 94V-2)
 Contact Pin: Brass
 Plating: Tin Plated



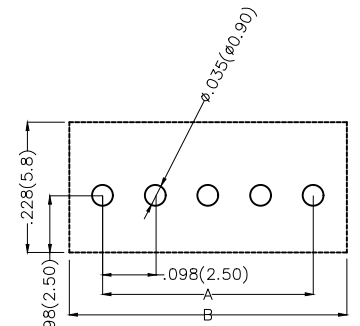
5-12Circuits



2-3Circuits



4Circuits




Recommended P.C.Board Layout

Ordering Information



FWF 250 12 — S XX S 2 2 XX B
 1 2 3 4 5 6 7 8 9 10

1 Category FWF—Wafer	2 Series Number 250—Pitch 2.5mm	3 Distinction No. 12	4 Row Option S—Single Row	5 Circuits XX	6 Entry Angle S—180° Vertical	
7 Plating 2—Tin Plated	8 Material—Resin 2—PA66	9 Color—Resin W1—White R1—Red K6—Black N1—Green U1—Blue ...	10 Packaging B—PE Bag			

THIRD ANGLE PROJECTION	GENERAL TOLERANCES (UNLESS SPECIFIED)		APPROVE BY FRANK	DATE 01/MAY/14	PART NO. FWF25012—SXXS22XXB	ITEM NO. FWF25012	 Leader Of Industry
	DESIGN UNITS Inch (metric)	X.±.012(0.30) X.±5'	CHECKED BY CHERRY	DATE 01/MAY/14	TITLE Wire to Board (Wafer) Pitch 2.5mm 180° Vertical (DIP)		
SCALE 5:1	SIZE A4	X.XX±.006(0.15) .XX'±1"	DRAWN BY JACOB	DATE 01/MAY/14	THIS DRAWING CONTAINS INFORMATION THAT IS PROPRIETARY TO TXGA INDUSTRIAL ELECTRONICS(S.Z)CO.,LTD AND SHOULD NOT BE USED WITHOUT WRITTEN PERMISSION		

REV	LOCATIONS	DESCRIPTION	DATE	REVISER	APPD

Circuits (n)	Part No.	Dimensions(in/mm)	
		A	B
2	FWF25012-S02S22XXB	.098(2.50)	.295(7.50)
3	FWF25012-S03S22XXB	.197(5.00)	.394(10.00)
4	FWF25012-S04S22XXB	.295(7.50)	.492(12.50)
5	FWF25012-S05S22XXB	.394(10.00)	.591(15.00)
6	FWF25012-S06S22XXB	.492(12.50)	.689(17.50)
7	FWF25012-S07S22XXB	.591(15.00)	.787(20.00)
8	FWF25012-S08S22XXB	.689(17.50)	.886(22.50)
9	FWF25012-S09S22XXB	.787(20.00)	.984(25.00)
10	FWF25012-S10S22XXB	.886(22.50)	1.083(27.50)
11	FWF25012-S11S22XXB	.984(25.00)	1.181(30.00)
12	FWF25012-S12S22XXB	1.083(27.50)	1.024(32.50)

 THIRD ANGLE PROJECTION	GENERAL TOLERANCES (UNLESS SPECIFIED)		APPROVE BY FRANK	DATE 01/MAY/14	PART NO. FWF25012-SXXS22XXB	ITEM NO. FWF25012	 Leader Of Industry	
	X.±.012(0.30)	X.±5'	CHECKED BY CHERRY	DATE 01/MAY/14	TITLE Wire to Board (Wafer) Pitch 2.5mm 180° Vertical (DIP)			REV 0
	DESIGN UNITS Inch (metric)	X.XX±.008(0.20)	.X'±2'	DRAWN BY JACOB	DATE 01/MAY/14	THIS DRAWING CONTAINS INFORMATION THAT IS PROPRIETARY TO TXGA INDUSTRIAL ELECTRONICS(S.Z)CO.,LTD AND SHOULD NOT BE USED WITHOUT WRITTEN PERMISSION		
SCALE 5:1	SIZE A4	X.XXX±.004(0.10)	.XXX'±0.5'					

X-ON Electronics

Largest Supplier of Electrical and Electronic Components

Click to view similar products for [Headers & Wire Housings](#) category:

Click to view products by [TXGA](#) manufacturer:

Other Similar products are found below :

[0015917161](#) [0022155065](#) [57102-F02-18ULF](#) [58102-G61-06LF](#) [582553-1](#) [01.001.5753.1](#) [0050291907](#) [02.125.8002.8](#) [609-3404](#) [61062-3](#)
[CSU011177004](#) [622-0430](#) [622-3653LF](#) [63453-116](#) [636-1030](#) [636-1427](#) [636-3427](#) [636-4007](#) [641938-9](#) [65495-038](#) [65692-001LF](#) [65781-018](#)
[65781-047](#) [65817-010LF](#) [65817-015LF](#) [67095-007LF](#) [67601157](#) [68631-112](#) [68645-018](#) [699319-000](#) [70.362.1628.0](#) [70-4210](#) [70-4226B](#) [70-](#)
[4853B](#) [71.350.2428.0](#) [733-134](#) [733-162](#) [760-3052](#) [MHR-64-VUAL](#) [80.063.4001.1](#) [800-90-001-10-001000](#) [801-43-002-10-013000](#)
[801-43-006-10-002000](#) [803-43-024-10-001000](#) [803-93-012-10-001000](#) [8-1437020-4](#) [819-22-004-30-001101](#) [820-22-006-30-001101](#)
[820-22-008-30-001101](#) [821-22-002-10-001101](#)