

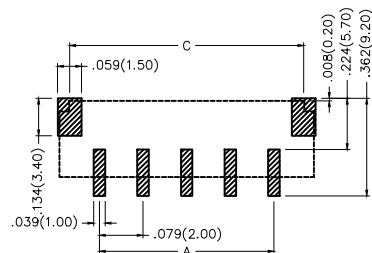
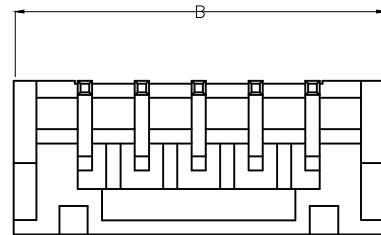
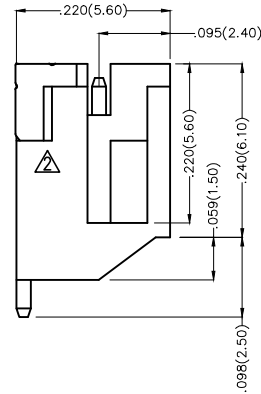
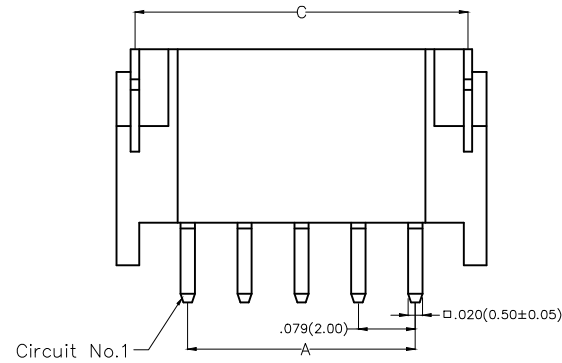
REV	LOCATIONS	DESCRIPTION	DATE	REVISER	APPD
1	△	MPQ 1500Pcs/Reel Change into 1000Pcs/Reel	20150921	CHERRY	FAN
2	△	Structure optimization	16/JUL/18	KATE	FRANK

Electrical

Current Rating: 2.0A AC(rms)/DC  
Voltage Rating: 100V AC(rms)/DC  
Contact Resistance: 10 mΩ Max  
Insulation Resistance: 1000 MΩ MIN  
Withstanding Voltage: 800V AC r.m.s  
Temperature Range-Operating: -25°C~+85°C

Material and Plating

Housing: PA9T( UL 94V-0)  
Contact Pin: Brass/ Tin plated  
Solder Tab: Copper alloy/ Tin plated




Recommended P.C.Board Layout

Ordering Information



FWF 200 04 - S XX B 2 4 W5 M  
1 2 3 4 5 6 7 8 9 10

1	Category FWF-Wafer	2	Series Number 200-Pitch 2.0mm	3	Distinction No. 04	4	Row Option S-Single Row	5	Circuits XX	6	Entry Angle B-90° Angle
7	Plating 2-Tin Plated	8	Material-Resin 4-PA9T	9	Color-Resin W5-White	10	Packaging M-Reel				

THIRD ANGLE PROJECTION		GENERAL TOLERANCES (UNLESS SPECIFIED)		APPROVE BY	DATE	PART NO.	ITEM NO.	 Leader Of Industry	
DESIGN UNITS Inch (metric)	X.±.012(0.30)	X'.±5'	CHECKED BY	FRANK	18/JUN/13	FWF20004-SXXB24W5M	FWF20004		
SCALE	X.XX±.008(0.20)	.X'±2'	DRAWN BY	JACOB	18/JUN/13	TITLE Wire to Board (Wafer) Pitch 2.0mm 90° Angled (SMT)		THIS DRAWING CONTAINS INFORMATION THAT IS PROPRIETARY TO TXGA INDUSTRIAL ELECTRONICS(S.Z)CO.,LTD AND SHOULD NOT BE USED WITHOUT WRITTEN PERMISSION	
5:1	X.XX±.006(0.15)	.XX'±1'	CHERRY		18/JUN/13				
SIZE	X.XXX±.004(0.10)	.XXX'±0.5'							
A4									

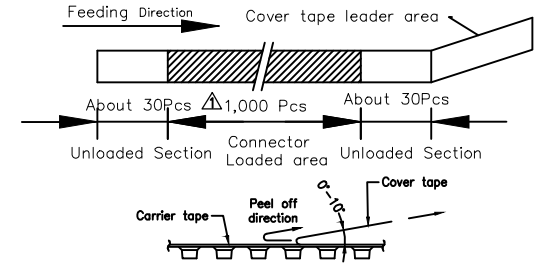
REV	LOCATIONS	DESCRIPTION	DATE	REVISER	APPD
1	△	MPQ 1500Pcs/Reel Change into 1000Pcs/Reel	20150921	CHERRY	FAN
2	△	Structure optimization	16/JUL/18	KATE	FRANK

Circuits (n)	Part No.	Dimensions(in/mm)		
		A	B	C
2	FWF20004-S02B24W5M	.079(2.00)	.315(8.00)	.268(6.80)
3	FWF20004-S03B24W5M	.157(4.00)	.394(10.00)	.346(8.80)
4	FWF20004-S04B24W5M	.236(6.00)	.472(12.00)	.425(10.80)
5	FWF20004-S05B24W5M	.315(8.00)	.551(14.00)	.504(12.80)
6	FWF20004-S06B24W5M	.394(10.00)	.630(16.00)	.583(14.80)
7	FWF20004-S07B24W5M	.472(12.00)	.709(18.00)	.661(16.80)
8	FWF20004-S08B24W5M	.551(14.00)	.787(20.00)	.740(18.80)
9	FWF20004-S09B24W5M	.630(16.00)	.866(22.00)	.819(20.80)
10	FWF20004-S10B24W5M	.709(18.00)	.945(24.00)	.898(22.80)
11	FWF20004-S11B24W5M	.787(20.00)	1.024(26.00)	.976(24.80)
12	FWF20004-S12B24W5M	.866(22.00)	1.102(28.00)	1.055(26.80)
13	FWF20004-S13B24W5M	.945(24.00)	1.181(30.00)	1.134(28.80)
14	FWF20004-S14B24W5M	1.024(26.00)	1.260(32.00)	1.213(30.80)
15	FWF20004-S15B24W5M	1.102(28.00)	1.339(34.00)	1.291(32.80)
16	FWF20004-S16B24W5M	1.181(30.00)	1.417(36.00)	1.370(34.80)

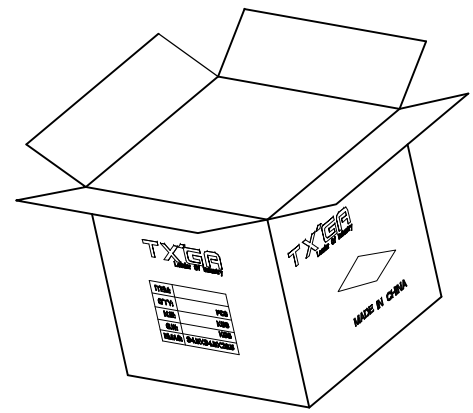
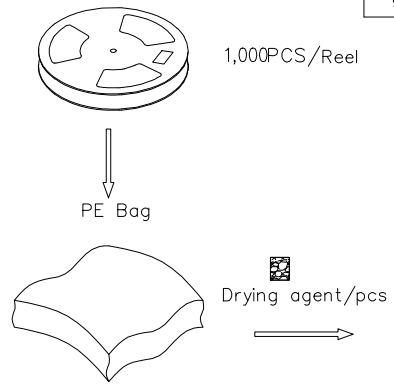
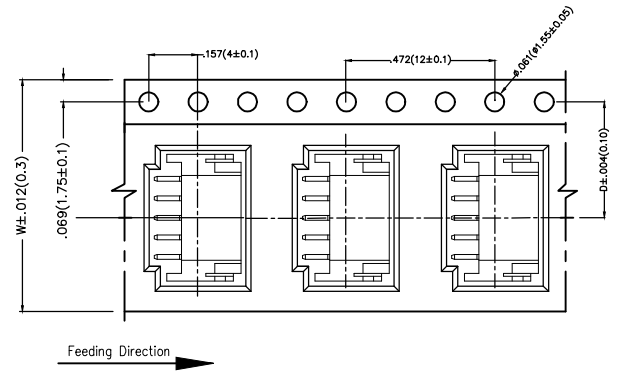
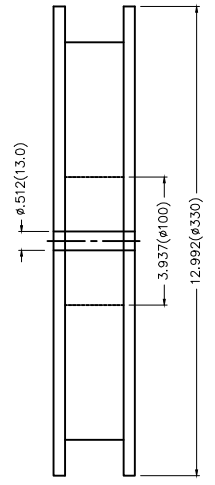
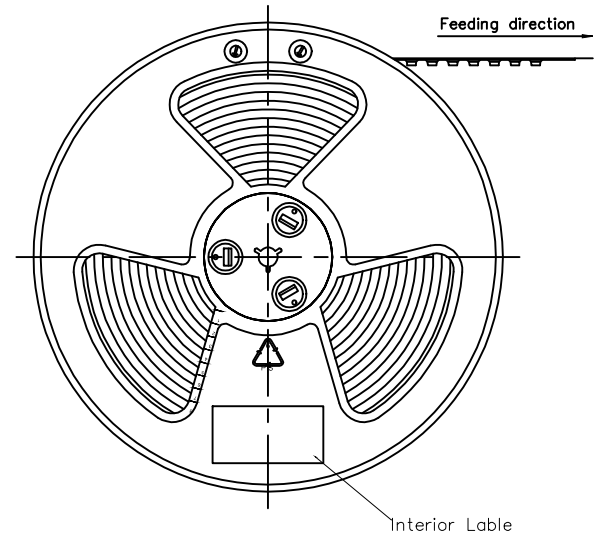
 THIRD ANGLE PROJECTION	GENERAL TOLERANCES (UNLESS SPECIFIED)		APPROVE BY FRANK	DATE 18/JUN/13	PART NO. FWF20004-SXXB24W5M	ITEM NO. FWF20004	 Leader Of Industry	
	DESIGN UNITS Inch (metric)	X.±.012(0.30)	X.±5'	CHECKED BY JACOB	DATE 18/JUN/13	TITLE Wire to Board (Wafer) Pitch 2.0mm 90° Angled (SMT)		REV 2
	SCALE 5:1	SIZE A4	X.XX±.008(0.20)	.X'±2'	DRAWN BY CHERRY	DATE 18/JUN/13	THIS DRAWING CONTAINS INFORMATION THAT IS PROPRIETARY TO TXGA INDUSTRIAL ELECTRONICS(S.Z)CO.,LTD AND SHOULD NOT BE USED WITHOUT WRITTEN PERMISSION	

REV	LOCATIONS	DESCRIPTION	DATE	REVISER	APPD
1	△	MPQ 1500Pcs/Reel Change into 1000Pcs/Reel	20150921	CHERRY	FAN
2	△	Structure optimization	16/JUL/18	KATE	FRANK

- Note:
- 10 sprocket hole cumulative tolerance±0.2
  - Carrier camber is within 1.0mm in 100mm
  - Material: White Conductive polystyrene Alloy 100% recyclable
  - All dimensions meet EIA-481-3 requirements
  - Component load per 13" reel: 1,000pcs



Circuits (n)	Dimensions(in/mm)		Circuits (n)	Dimensions(in/mm)	
	D	W		D	W
2	.295(7.50)	.630(16.00)	10	.559(14.20)	1.260(32.00)
3	.295(7.50)	.630(16.00)	11	.795(20.20)	1.732(44.00)
4	.453(11.50)	.945(24.00)	12	.795(20.20)	1.732(44.00)
5	.453(11.50)	.945(24.00)	13	.795(20.20)	1.732(44.00)
6	.453(11.50)	.945(24.00)	14	.795(20.20)	1.732(44.00)
7	.559(14.20)	1.260(32.00)	15	.795(20.20)	1.732(44.00)
8	.559(14.20)	1.260(32.00)	16	.795(20.20)	1.732(44.00)
9	.559(14.20)	1.260(32.00)			



 THIRD ANGLE PROJECTION DESIGN UNITS Inch (metric) SCALE 5:1 SIZE A4	GENERAL TOLERANCES (UNLESS SPECIFIED)		APPROVE BY	DATE	PART NO.	ITEM NO.	 Leader Of Industry	
	X.±.012(0.30)	X.'±5'	FRANK	18/JUN/13	FWF20004-SXXB24W5M	FWF20004		
	X.X±.008(0.20)	X.'±2'	CHECKED BY	DATE	TITLE		REV 2	SHEET NO. 3/3
	X.XX±.006(0.15)	.XX'±1'	JACOB	18/JUN/13	Wire to Board (Wafer) Pitch 2.0mm 90° Angled (SMT)			
	X.XXX±.004(0.10)	.XXX'±0.5'	DRAWN BY	DATE	THIS DRAWING CONTAINS INFORMATION THAT IS PROPRIETARY TO TXGA INDUSTRIAL ELECTRONICS(S.Z)CO.,LTD AND SHOULD NOT BE USED WITHOUT WRITTEN PERMISSION			
			CHERRY	18/JUN/13				

## X-ON Electronics

Largest Supplier of Electrical and Electronic Components

*Click to view similar products for [Headers & Wire Housings](#) category:*

*Click to view products by [TXGA](#) manufacturer:*

Other Similar products are found below :

[0015917161](#) [0022155065](#) [57102-F02-18ULF](#) [58102-G61-06LF](#) [582553-1](#) [01.001.5753.1](#) [0050291907](#) [02.125.8002.8](#) [609-3404](#) [61062-3](#)  
[CSU011177004](#) [622-0430](#) [622-3653LF](#) [63453-116](#) [636-1030](#) [636-1427](#) [636-3427](#) [636-4007](#) [641938-9](#) [65495-038](#) [65692-001LF](#) [65781-018](#)  
[65781-047](#) [65817-010LF](#) [65817-015LF](#) [67095-007LF](#) [67601157](#) [68631-112](#) [68645-018](#) [699319-000](#) [70.362.1628.0](#) [70-4210](#) [70-4226B](#) [70-](#)  
[4853B](#) [71.350.2428.0](#) [733-134](#) [733-162](#) [760-3052](#) [MHR-64-VUAL](#) [80.063.4001.1](#) [800-90-001-10-001000](#) [801-43-002-10-013000](#)  
[801-43-006-10-002000](#) [803-43-024-10-001000](#) [803-93-012-10-001000](#) [8-1437020-4](#) [819-22-004-30-001101](#) [820-22-006-30-001101](#)  
[820-22-008-30-001101](#) [821-22-002-10-001101](#)