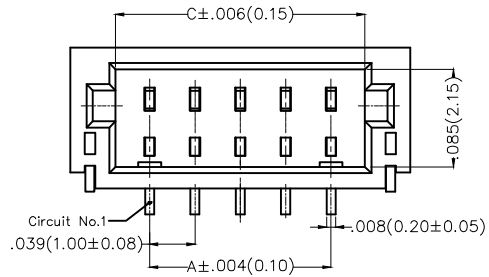


REV	LOCATIONS	DESCRIPTION	DATE	REVISER	APPD

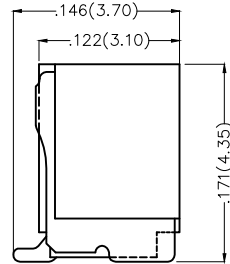
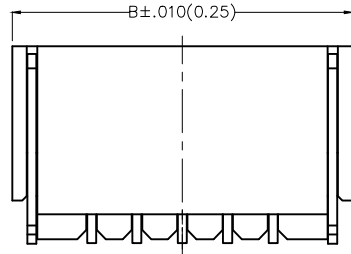


**Electrical**

Current Rating: 1A AC(rms)/DC  
Voltage Rating: 50V AC(rms)/DC  
Contact Resistance: 20 mΩ Max  
Insulation Resistance: 100 MΩ MIN  
Withstanding Voltage: 500V AC r.m.s  
Temperature Range—Operating: -25°C~+85°C

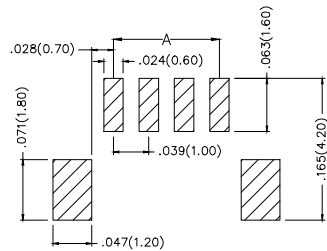
**Material and Plating**

Housing: PA9T( UL 94V-0)  
Contact Pin: Brass/ Tin plated  
Solder Tab: Copper alloy/ Tin plated



**Ordering Information**

FWF 100 02 — S XX S 2 4 W5 M  
1 2 3 4 5 6 7 8 9 10





Recommended P.C.Board Layout

1	Category FWF—Wafer	2	Series Number 100—Pitch1.0mm	3	Distinction No. 02	4	Row Option Single Row	5	Circuits XX	6	Entry Angle S—180° Vertical
7	Plating 2—Tin Plated	8	Material—Resin 4—PA9T	9	Color—Resin W5—White	10	Packaging M—Reel				

 THIRD ANGLE PROJECTION	GENERAL TOLERANCES (UNLESS SPECIFIED)		APPROVE BY FRANK	DATE 28/JUN/13	PART NO. FWF10002—SXXS24W5M	ITEM NO. FWF10002	 Leader Of Industry	
	DESIGN UNITS Inch (metric)	X.X±.012(0.30) X.XX±.008(0.20)	X.'±5" .X'±2"	CHECKED BY JACOB	DATE 28/JUN/13	TITLE Wire to Board (Wafer) Pitch 1.0mm 180° Vertical (SMT)		REV 0
SCALE 5:1	SIZE A4	X.XX±.006(0.15) X.XXX±.004(0.10)	.XX'±1" .XXX'±0.5'	DRAWN BY CHERRY	DATE 28/JUN/13	THIS DRAWING CONTAINS INFORMATION THAT IS PROPRIETARY TO TXGA INDUSTRIAL ELECTRONICS(S.Z)CO.,LTD AND SHOULD NOT BE USED WITHOUT WRITTEN PERMISSION		

REV	LOCATIONS	DESCRIPTION	DATE	REVISER	APPD

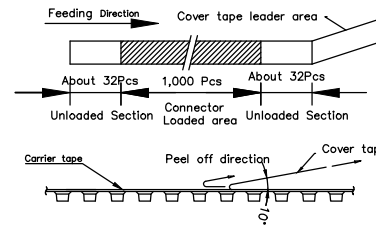
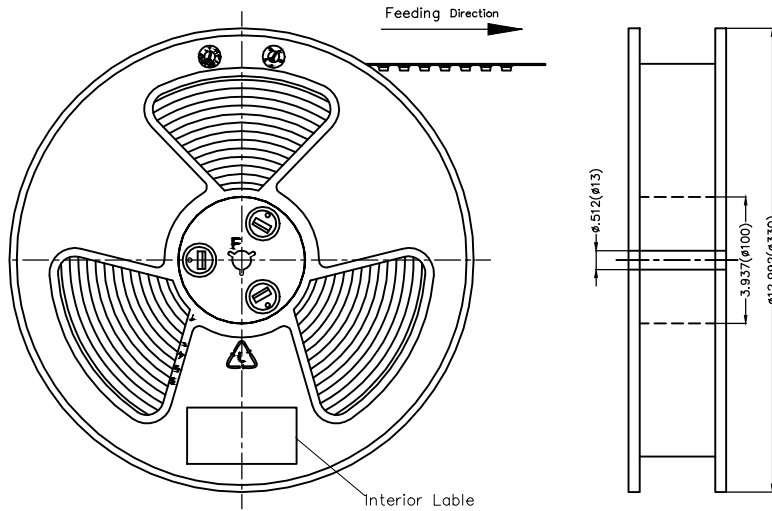
Circuits (n)	Part No.	Dimensions(in/mm)			Circuits (n)	Part No.	Dimensions(in/mm)		
		A	B	C			A	B	C
2	FWF10002-S02S24W5M	.039(1.00)	.177(4.50)	.102(2.60)	11	FWF10002-S11S24W5M	.394(10.00)	.531(13.50)	.457(11.60)
3	FWF10002-S03S24W5M	.078(2.00)	.217(5.50)	.142(3.60)	12	FWF10002-S12S24W5M	.433(11.00)	.571(14.50)	.496(12.60)
4	FWF10002-S04S24W5M	.118(3.00)	.256(6.50)	.181(4.60)	13	FWF10002-S13S24W5M	.472(12.00)	.610(15.50)	.535(13.60)
5	FWF10002-S05S24W5M	.157(4.00)	.295(7.50)	.220(5.60)	14	FWF10002-S14S24W5M	.512(13.00)	.650(16.50)	.575(14.60)
6	FWF10002-S06S24W5M	.197(5.00)	.335(8.50)	.260(6.60)	15	FWF10002-S15S24W5M	.551(14.00)	.689(17.50)	.614(15.60)
7	FWF10002-S07S24W5M	.236(6.00)	.374(9.50)	.299(7.60)	16	FWF10002-S16S24W5M	.591(15.00)	.728(18.50)	.654(16.60)
8	FWF10002-S08S24W5M	.276(7.00)	.413(10.50)	.339(8.60)	17	FWF10002-S17S24W5M	.630(16.00)	.768(19.50)	.693(17.60)
9	FWF10002-S09S24W5M	.315(8.00)	.453(11.50)	.378(9.60)	18	FWF10002-S18S24W5M	.669(17.00)	.807(20.50)	.732(18.60)
10	FWF10002-S10S24W5M	.354(9.00)	.492(12.50)	.417(10.60)	20	FWF10002-S20S24W5M	.748(19.00)	.886(22.50)	.811(20.60)

 THIRD ANGLE PROJECTION	GENERAL TOLERANCES (UNLESS SPECIFIED)		APPROVE BY FRANK	DATE 28/JUN/13	PART NO. FWF10002-SXXS24W5M	ITEM NO. FWF10002	 Leader Of Industry
	X.±.012(0.30)	X.±5'	CHECKED BY JACOB	DATE 28/JUN/13	TITLE Wire to Board (Wafer) Pitch 1.0mm 180° Vertical (SMT)		
DESIGN UNITS Inch (metric)	X.XX±.008(0.20)	.X'±2'	DRAWN BY CHERRY	DATE 28/JUN/13	THIS DRAWING CONTAINS INFORMATION THAT IS PROPRIETARY TO TXGA INDUSTRIAL ELECTRONICS(S.Z)CO.,LTD AND SHOULD NOT BE USED WITHOUT WRITTEN PERMISSION		
SCALE 5:1	SIZE A4	X.XXX±.004(0.10)	.XXX'±0.5'				

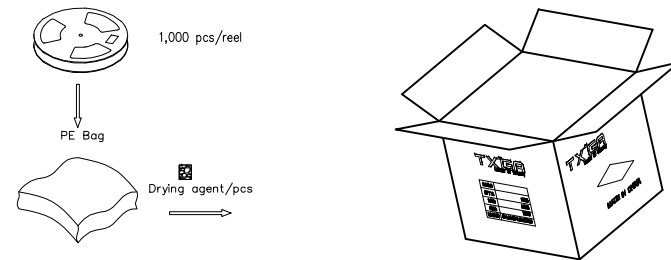
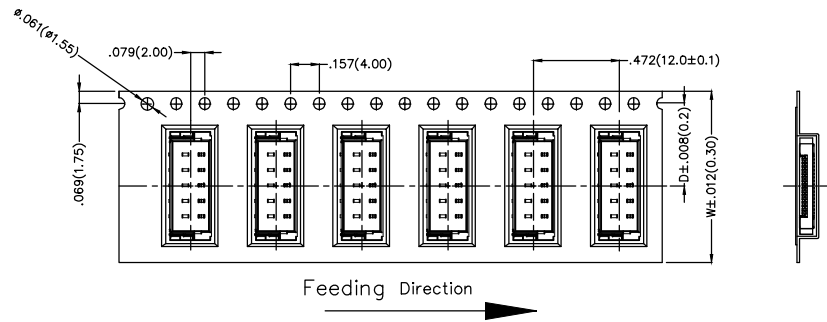
REV	LOCATIONS	DESCRIPTION	DATE	REVISER	APPD

Note:

- 10 sprocket hole cumulative tolerance  $\pm 0.2$
- Carrier camber is within 1.0mm in 250mm
- Material: White Conductive polystyrene Alloy 100% recyclable
- All dimensions meet EIA-481-3 requirements
- Peel off force of cover tape & carrier tape: 20g~130g (0.2N~1.3N)
- Component load per 13" reel: 1,000 pcs



Circuits (n)	Dimensions(in/mm)		Circuits (n)	Dimensions(in/mm)	
	D	W		D	W
2	.295(7.50)	.630(16.00)	12	.453(11.50)	.945(24.00)
3	.295(7.50)	.630(16.00)	13	.453(11.50)	.945(24.00)
4	.295(7.50)	.630(16.00)	14	.453(11.50)	.945(24.00)
5	.295(7.50)	.630(16.00)	15	.453(11.50)	.945(24.00)
6	.295(7.50)	.630(16.00)	16	.453(11.50)	.945(24.00)
7	.295(7.50)	.630(16.00)	17	.798 (20.20)	1.732 (44.0)
8	.295(7.50)	.630(16.00)	18	.798 (20.20)	1.732 (44.0)
9	.295(7.50)	.630(16.00)	20	.798 (20.20)	1.732 (44.0)
10	.453(11.50)	.945(24.00)			
11	.453(11.50)	.945(24.00)			



 THIRD ANGLE PROJECTION	GENERAL TOLERANCES (UNLESS SPECIFIED)		APPROVE BY	DATE	PART NO.	ITEM NO.	 Leader Of Industry	
	X.±.012(0.30)	X.'±5'	FRANK	28/JUN/13	FWF10002-SXXS24W5M	FWF10002		
	DESIGN UNITS Inch (metric)	X.XX±.008(0.20)	X.'±2'	CHECKED BY	DATE	TITLE		REV 0
	SCALE	X.XX±.006(0.15)	.XX'±1'	JACOB	28/JUN/13	Wire to Board (Wafer) Pitch 1.0mm 180° Vertical (SMT)		
SIZE	X.XXX±.004(0.10)	.XXX'±0.5'	DRAWN BY	DATE	THIS DRAWING CONTAINS INFORMATION THAT IS PROPRIETARY TO TXGA INDUSTRIAL ELECTRONICS(S.Z)CO.,LTD AND SHOULD NOT BE USED WITHOUT WRITTEN PERMISSION			
5:1	A4		CHERRY	28/JUN/13				

## X-ON Electronics

Largest Supplier of Electrical and Electronic Components

*Click to view similar products for [Headers & Wire Housings](#) category:*

*Click to view products by [TXGA](#) manufacturer:*

Other Similar products are found below :

[0015917161](#) [0022155065](#) [57102-F02-18ULF](#) [58102-G61-06LF](#) [582553-1](#) [01.001.5753.1](#) [0050291907](#) [02.125.8002.8](#) [609-3404](#) [61062-3](#)  
[CSU011177004](#) [622-0430](#) [622-3653LF](#) [63453-116](#) [636-1030](#) [636-1427](#) [636-3427](#) [636-4007](#) [641938-9](#) [65495-038](#) [65692-001LF](#) [65781-018](#)  
[65781-047](#) [65817-010LF](#) [65817-015LF](#) [67095-007LF](#) [67601157](#) [68631-112](#) [68645-018](#) [699319-000](#) [70.362.1628.0](#) [70-4210](#) [70-4226B](#) [70-](#)  
[4853B](#) [71.350.2428.0](#) [733-134](#) [733-162](#) [760-3052](#) [MHR-64-VUAL](#) [80.063.4001.1](#) [800-90-001-10-001000](#) [801-43-002-10-013000](#)  
[801-43-006-10-002000](#) [803-43-024-10-001000](#) [803-93-012-10-001000](#) [8-1437020-4](#) [819-22-004-30-001101](#) [820-22-006-30-001101](#)  
[820-22-008-30-001101](#) [821-22-002-10-001101](#)