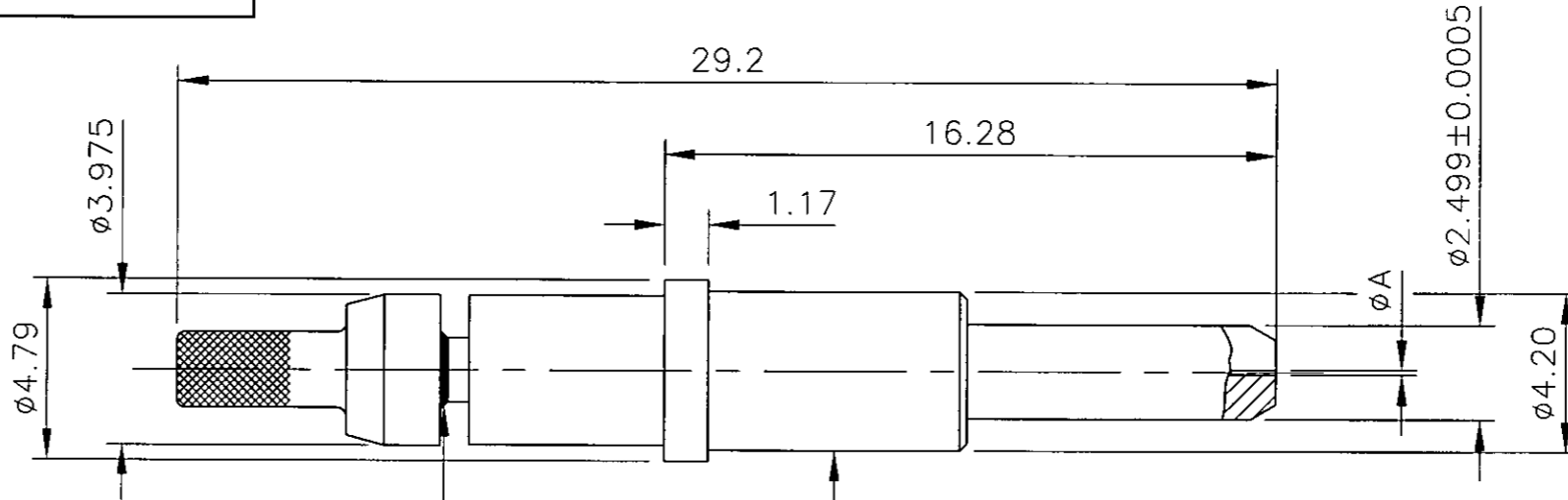


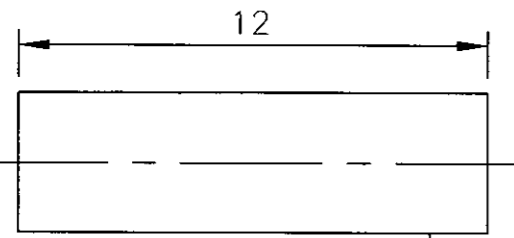
NICKEL PLATED BRASS  
CRIMP SLEEVE

CRIMP SLEEVE FOR STYLE 01, 02, 03 AND 04.



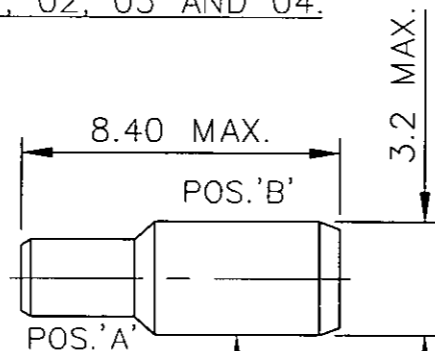
SOLDERED REAR  
CRIMP ADAPTOR

OPTICAL CONTACT ASSY INCLUDING:-  
CERAMIC SM FERRULE  
STAINLESS OVER-TRAVEL SPRING.  
ARCAP BODY COMPONENTS.



ADHESIVE LINED HEATSHRINK

CRIMP SLEEVE AND SLEEVE FOR STYLE 05.



CRIMP SLEEVE ARCAP

NOTES:-

1. THE CRIMP SLEEVE IS NOT REQUIRED WHEN USING PLAIN BUFFERED FIBRE.
2. USE THE FOLLOWING CRIMP TOOL:  
ERMA TYPE 29021 (DEUTSCH No., 451716) TOGETHER WITH DEUTSCH DIES 455608.  
A/F SIZES- FOR CRIMP SIZE 00 1.64/1.74mm  
FOR CRIMP SIZES 01, 02 & 04 3.02/3.10mm  
FOR CRIMP SIZE 03 3.48/3.56  
FOR CRIMP SIZE 05 POS. A = 1.70/1.80  
POS. B = 2.74/2.84
3. EXAMPLE OF PART No.,

455616-127-\*\*

OPTICAL HOLE \_\_\_\_\_

00  $\phi$ 900 $\mu$  BUFFERED FIBRE  
01  $\phi$ 2.50 TIGHT JACKETED CABLE  
02  $\phi$ 1.80 TIGHT JACKETED CABLE  
03  $\phi$ 3.00 TIGHT JACKETED CABLE  
04  $\phi$ 2.10 TIGHT JACKETED CABLE  
05  $\phi$ 1.20 TIGHT JACKETED CABLE

PART No.,	$\phi$ A NOM.	PART No.,	CABLE DIA
455616-125-**	0.125	455616-***-00	900 $\mu$ PLAIN BUFFER FIBRE
455616-126-**	0.126	455616-***-01	2.50
455616-127-**	0.127	455616-***-02	1.80
		455616-***-03	3.00
		455616-***-04	2.10
		455616-***-05	1.20

ISSUE	CHANGE NOTE	DRAWN	CHECKED	APP. ENG.	DATE	APP. IED.
C	044000	J.T.B	es	es	12/01/04	
B	033637	J.V	A.V.S	K.R.M	20/05/97	

MATERIAL
HEAT TREATMENT & FINISH

© THE COPYRIGHT OF THIS DRAWING IS RESERVED BY DEUTSCH LTD. IT IS ISSUED ON CONDITION THAT IT IS NOT COPIED, REPRODUCED OR DISCLOSED TO A THIRD PARTY EITHER WHOLLY OR IN PART WITHOUT THE CONSENT IN WRITING OF DEUTSCH LTD.

GENERAL TOLERANCES UNLESS OTHERWISE STATED.  
 $\pm$ 0.4mm ON WHOLE NUMBERS  
 $\pm$ 0.2mm ON ONE PLACE DECIMALS  
 $\pm$ 0.1mm ON TWO PLACE DECIMALS  
 $\pm$ 1/2° ON ANGLES  
 $\pm$ 0.05mm ON DRILLED HOLES  
 REMOVE ALL BURRS AND SHARP EDGES 0.1 MAX. UNLESS OTHERWISE STATED.

**DEUTSCH LTD**

EAST GRINSTEAD, WEST SUSSEX, RH19 1RW TEL:- (01342) 410033

TITLE OPTICAL CONTACT ASSY- SPRUNG (SINGLE MODE) MC3 MK2	DRAWING NUMBER <b>455616 (ENV)</b>
SCALE 5:1	DIMS. IN MILLIMETRES

## X-ON Electronics

Largest Supplier of Electrical and Electronic Components

*Click to view similar products for [Fibre Optic Connectors](#) category:*

*Click to view products by [TE Connectivity](#) manufacturer:*

Other Similar products are found below :

[0004700001](#) [6100-R](#) [6313](#) [F709034706](#) [F709722200](#) [F709730000](#) [F718183204](#) [F727403500](#) [F727752800](#) [8119](#) [9440F20-27S-190](#) [944-120-6001](#) [9441F10SL-3S](#) [9444W28-21S](#) [9444W36-10S](#) [9446F10SL-4S](#) [9446W20-16S](#) [953-101-5310-P](#) [954-101-57202B](#) [A0270169](#) [12-9122](#) [12-5702](#) [AX101713](#) [AX102420](#) [AX103923](#) [AX104024](#) [AX104193](#) [AX104230](#) [AX104498](#) [AX104562](#) [AX105203-B25](#) [AX105205-S1](#) [EHSC2M](#) [181-011-126](#) [181-011-S](#) [181-057-126](#) [HRFC-R2\(40\)](#) [NKSOPBUY](#) [20500002116](#) [2064996-1](#) [20800001065](#) [2170](#) [9132](#) [2612](#) [2620](#) [9291](#) [9440F16-10S](#) [9440F20-18S](#) [9442W14S-10P](#) [9446F16-10S-190](#)