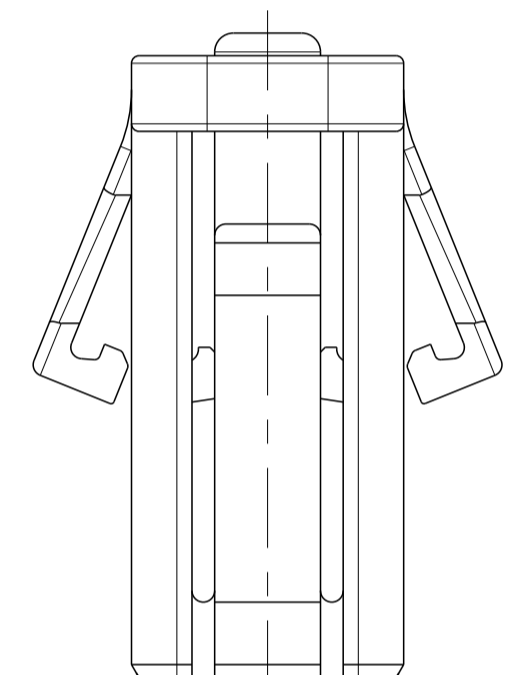
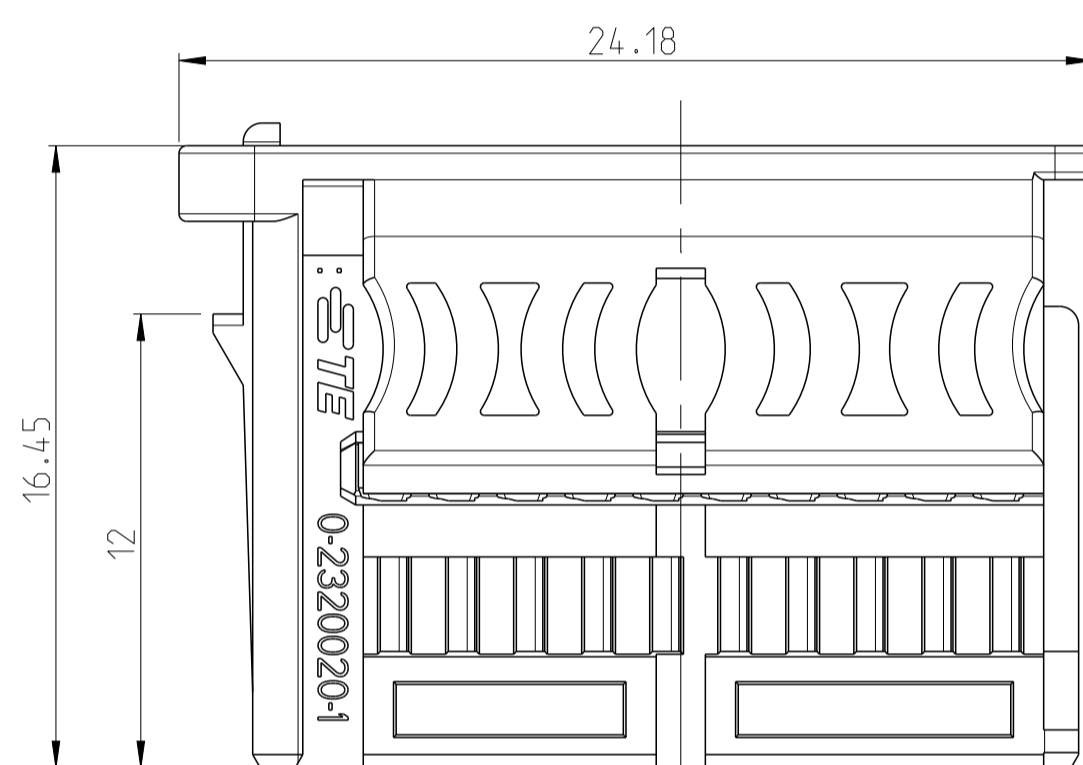
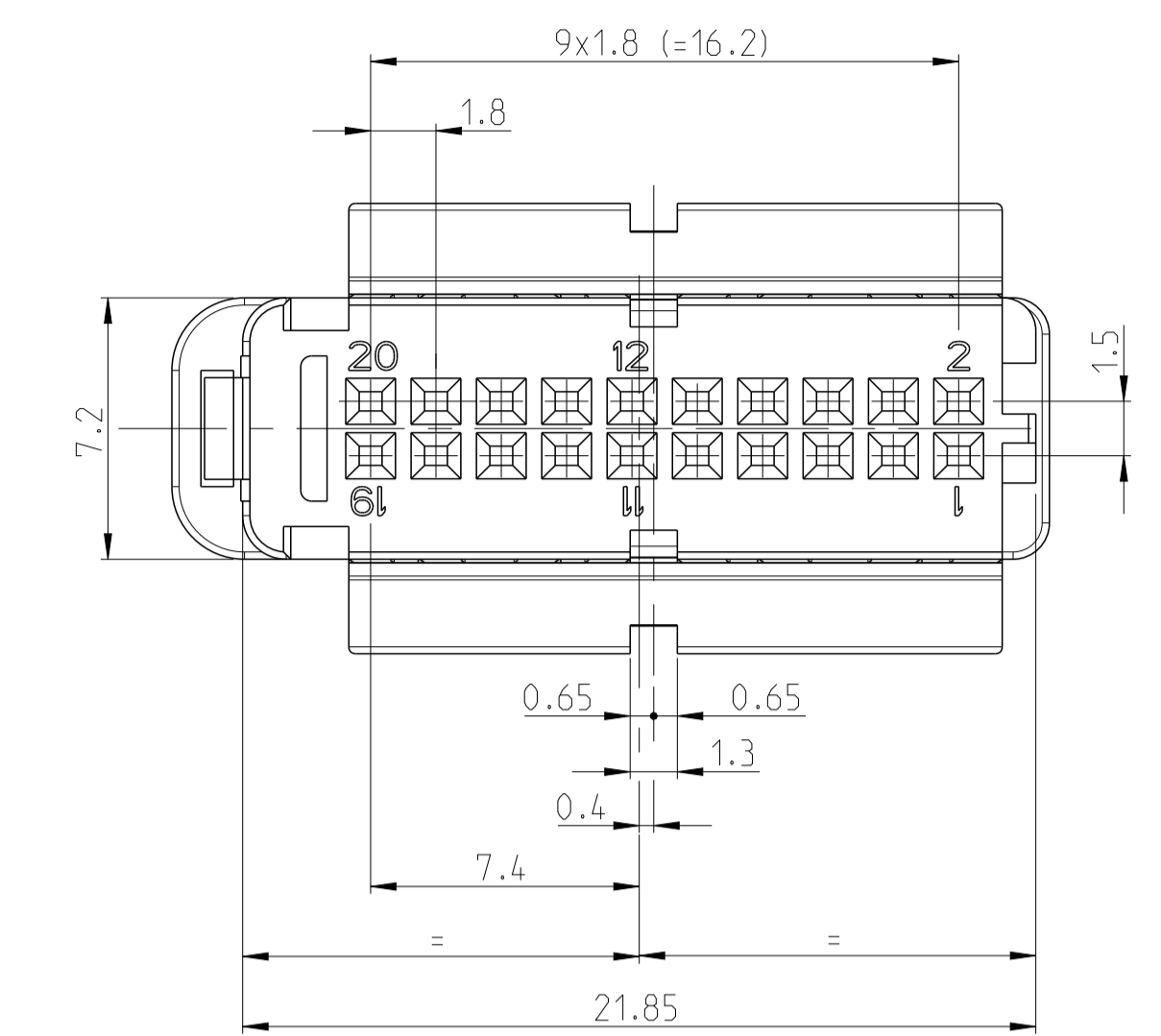
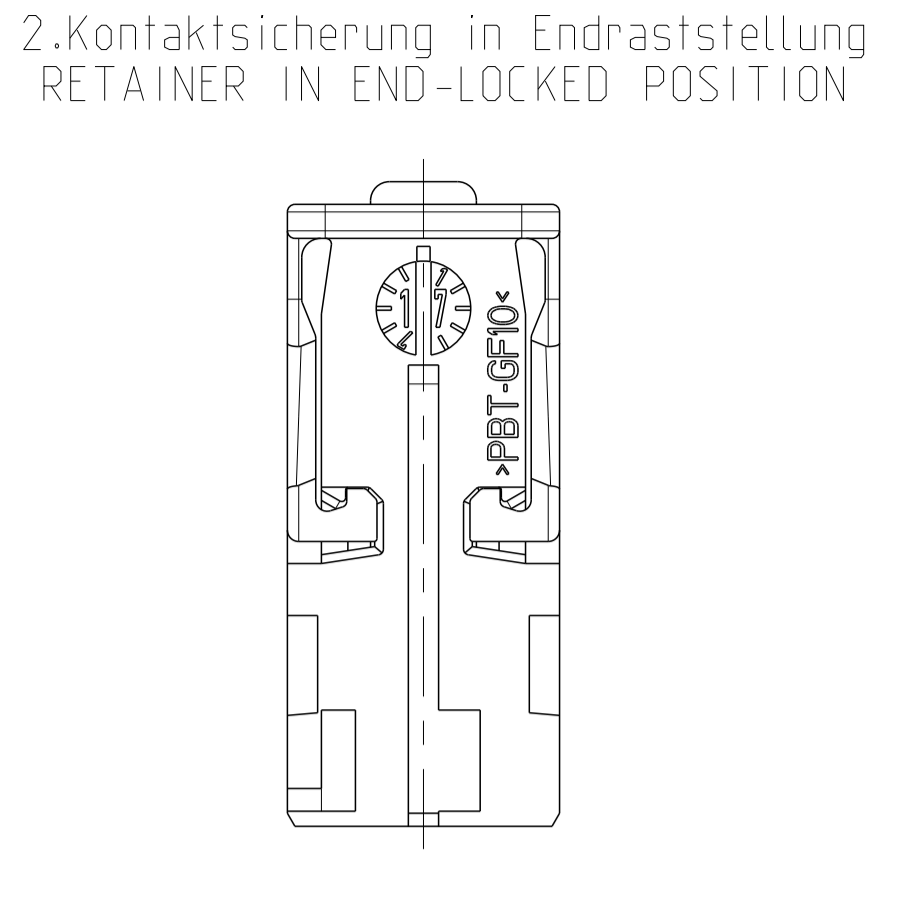
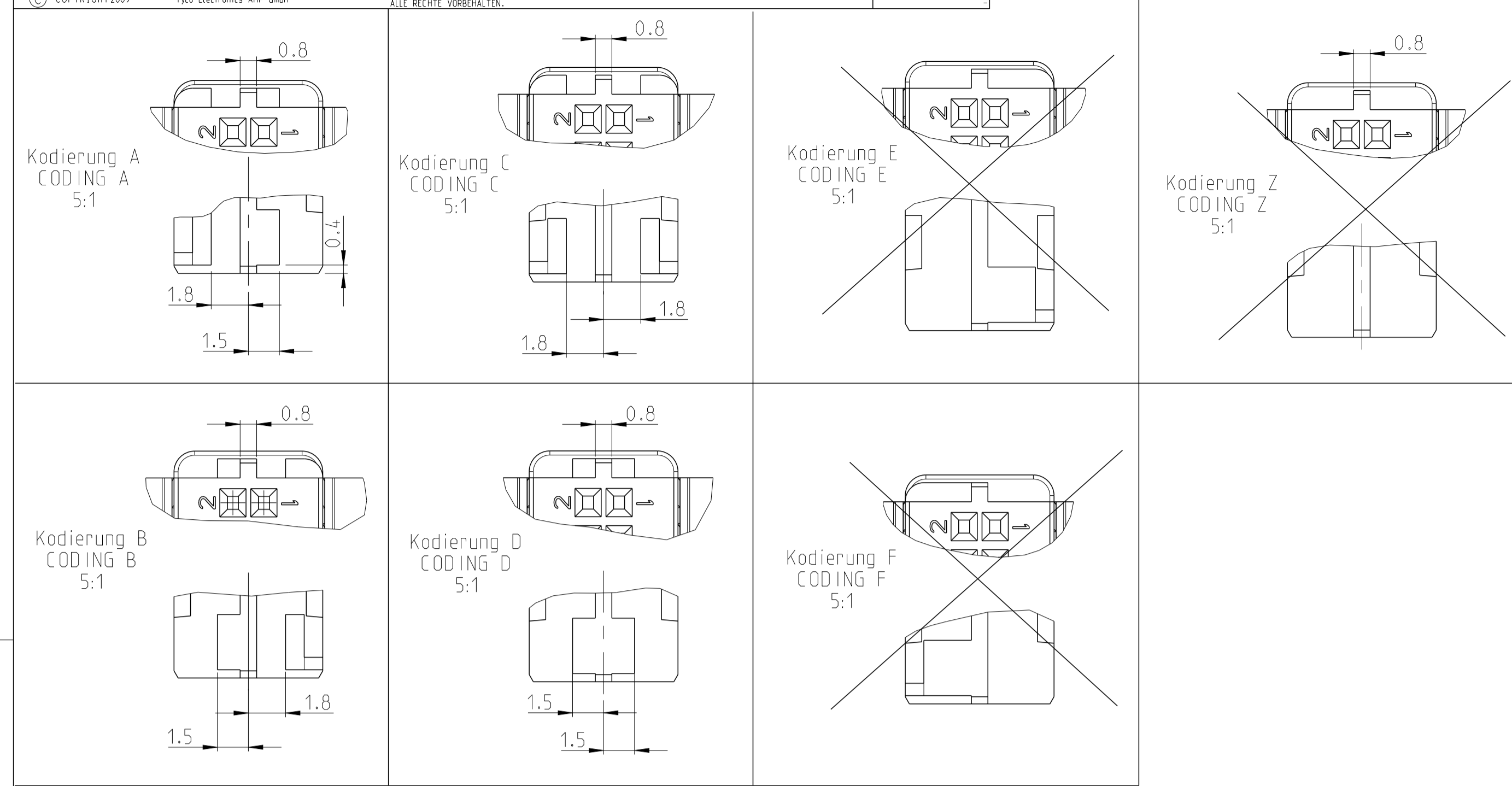


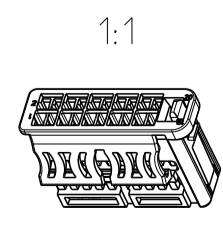
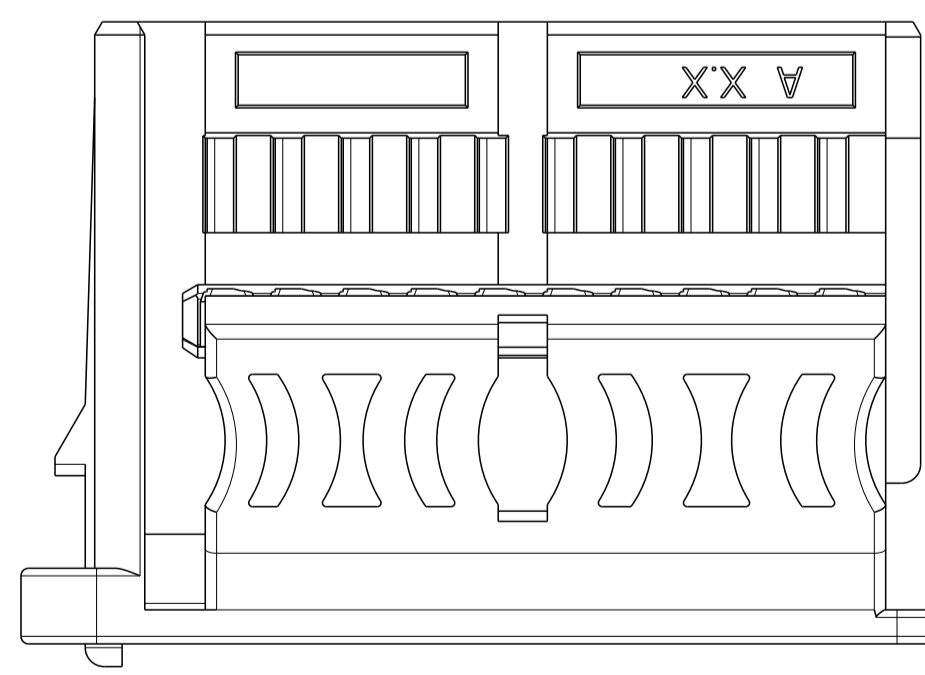
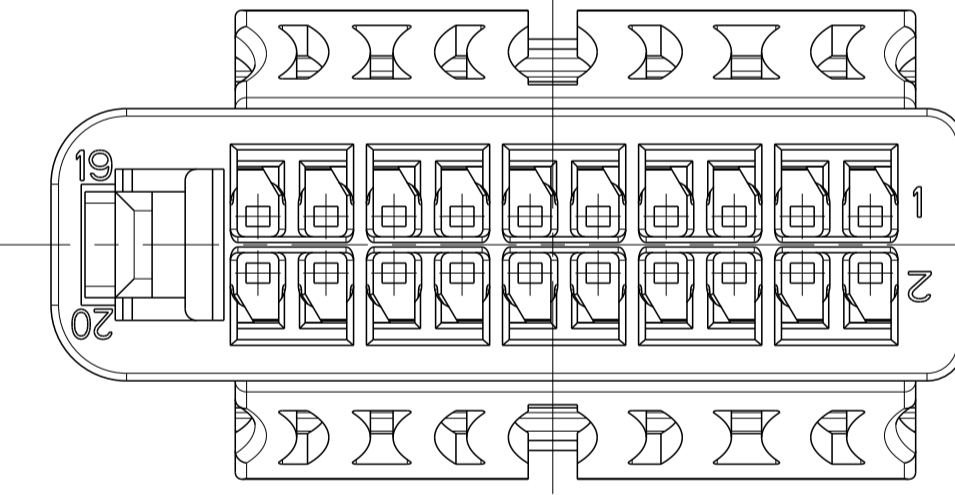
LOC PROJECT		REVISIONS			
REV	DATE	DESCRIPTION	DATE	DWN	APVD
A1	-	NEW DRAWING	23MAR2016	MS	ZS
A1	-	ECR-17-006888	12MAY2017	MS	TS



PRJ-Nr.	REV.	LOC.	REV.	Farbe	Gewicht	passend zu
PRJ-Nr.	REV.	LOC.	REV.	COLOR	WEIGHT	SUITABLE TO PINHEADER
PRJ-16-90377-222-4	A	D		bordeauxviolett / CLARET VIOLET	2.0	
PRJ-16-90377-222-3	A	C		blau / BLUE		
PRJ-16-90377-222-2	A	B		natur / NATURAL		
PRJ-16-90377-222-1	A	A		schwarz / BLACK		
2320020-4	A	D		bordeauxviolett / CLARET VIOLET	1.9	
2320020-3	A	C		blau / BLUE		
2320020-2	A	B		natur / NATURAL		
2320020-1	A	A		schwarz / BLACK		
2312218-4	A	D		bordeauxviolett / CLARET VIOLET	1.7	
2312218-3	A	C		blau / BLUE		
2312218-2	A	B		natur / NATURAL		
2312218-1	A	A		schwarz / BLACK		
2320016-4	A	D		bordeauxviolett / CLARET VIOLET	1.6	
2320016-3	A	C		blau / BLUE		
2320016-2	A	B		natur / NATURAL		
2320016-1	A	A		schwarz / BLACK		
2320014-4	A	D		bordeauxviolett / CLARET VIOLET	1.3	
2320014-3	A	C		blau / BLUE		
2320014-2	A	B		natur / NATURAL		
2320014-1	A	A		schwarz / BLACK		
2312212-4	A	D		bordeauxviolett / CLARET VIOLET	1.2	
2312212-3	A	C		blau / BLUE		
2312212-2	A	B		natur / NATURAL		
2312212-1	A	A		schwarz / BLACK		
2302475-4	A	D		bordeauxviolett / CLARET VIOLET	1.1	
2302475-3	A	C		blau / BLUE		
2302475-2	A	B		natur / NATURAL		
2302475-1	A	A		schwarz / BLACK		
2320008-4	A	D		bordeauxviolett / CLARET VIOLET	0.9	
2320008-3	A	C		blau / BLUE		
2320008-2	A	B		natur / NATURAL		
2320008-1	A	A		schwarz / BLACK		
2302501-4	A	D		bordeauxviolett / CLARET VIOLET	0.9	
2302501-3	A	C		blau / BLUE		
2302501-2	A	B		natur / NATURAL		
2302501-1	A	A		schwarz / BLACK		
2320004-4	A	D		bordeauxviolett / CLARET VIOLET	0.7	
2320004-3	A	C		blau / BLUE		
2320004-2	A	B		natur / NATURAL		
2320004-1	A	A		schwarz / BLACK		

- Bemerkungen  
 NOTES
- Hierzu gehört Kontakt siehe Zeichnung  
 SUITABLE FOR CONTACT SEE DRAWING
  - Zugehörige Ausführungsvorschrift (AV/Kragen) TE: 114-94000-20  
 PERTAINING INTERFACE (SHROUD) SEE DRAWING.
  - Einzelheiten der Ausführung bleiben dem Hersteller ueberlassen  
 THE MANUFACTURER CAN CHANGE DETAILS OF THE DESIGN
  - Massgebend ist der deutsche Text  
 ONLY THE GERMAN-LANGUAGE VERSION SHALL BE BINDING
  - Formteilungsgrat zulaessig  
 PART LINE PERMITTED MAX. 0.3
  - Formteilungsversatz zulaessig  
 SPLIT LINE PERMITTED MAX. 0.3
  - Verpackung: Schuettgut  
 PACKAGING: LOOSE PIECE
  - Zulaessiger Regeneratanteil  
 RECYCLED MATERIAL PERMISSIBLE MAX. 25%
  - Anlieferzustand:  
 2. Kontaktsicherung in Vorraststellung - wenn nach Transport endverrastet.  
 bitte in Vorraststellung rasten, gemass Application Spec.  
 CONDITION ON DELIVERY:  
 SECONDARY LOCKING DEVICE IN PRELOCKING POSITION - IF IN ENDLOCKING POSITION AFTER  
 TRANSPORTATION, PLEASE RELOCK IN ACCORDANCE TO APPLICATION SPEC.
  - Ausfuhrung Lieferantenlogo wahlweise  
 SUPPLIER LOGO VERSION OPTIONAL
- 0- -1 Kod. A, 20 pol. wie gezeichnet  
 COD A, 20 PDS. AS SHOWN

Kammer	ALL CAVITIES
Kammer CAVITY	ALL CAVITIES
Buchsenkontakt SOCKET CONTACT	NanoMQS
max. ISOØ	1.30
entspricht ACCORDING	max. DGB (mm <sup>2</sup> )
	FLR FLU
Zeichnung DRAWING	TE 1703930



DIESE ZEICHNUNG IST EIN KONTROLLIERTES DOKUMENT.  
 DIMENSIONEN UND TOLERANZEN GEMAESS GPS (ISO STANDARDS).

THIS DRAWING IS A CONTROLLED DOCUMENT.  
 DIMENSIONING AND TOLERANCING PER GPS (ISO STANDARDS)

Size ISO 14405  
 TOLERANCING ISO 8015  
 TOLERIERUNG ISO 8015

DMN M. Stein 23MAR2016  
 C. Boemmel 23MAR2016

TE Connectivity

4-22 pol., NanoMQS, Buchsengehäuse  
 4-22 POS., NanoMQS, REC. HOUSING

SCALE MASSSTAB 5:1  
 SHEET BLATT 1 OF 3  
 REV. A1

LOC PROJECT		REVISIONS		
NO.	DATE	DESCRIPTION	DATE	APVD
A1	-	SEE SHEET 1	-	-

4 polig/POS.

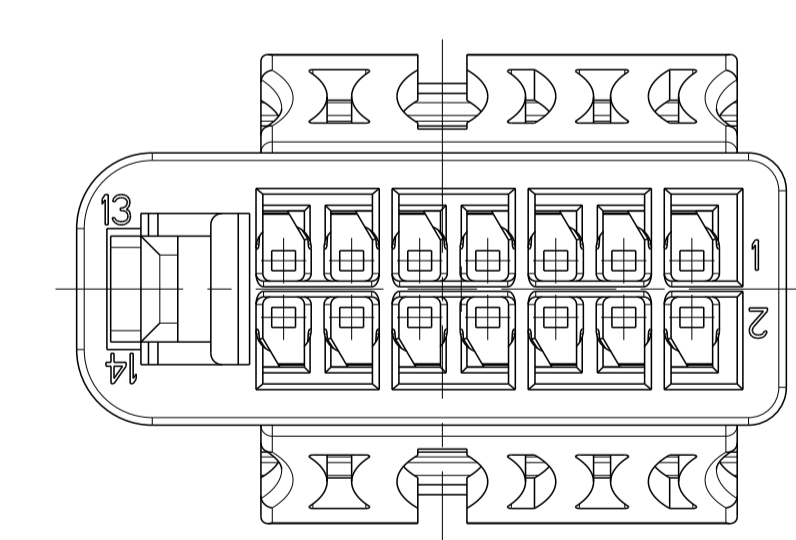
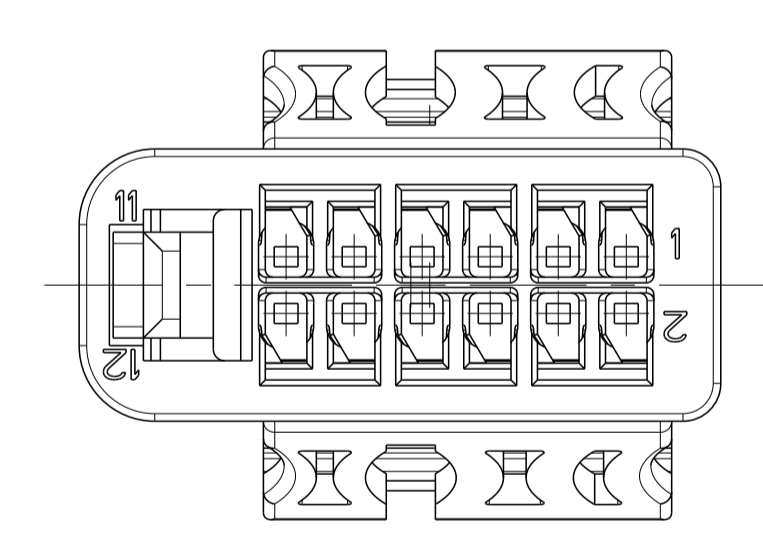
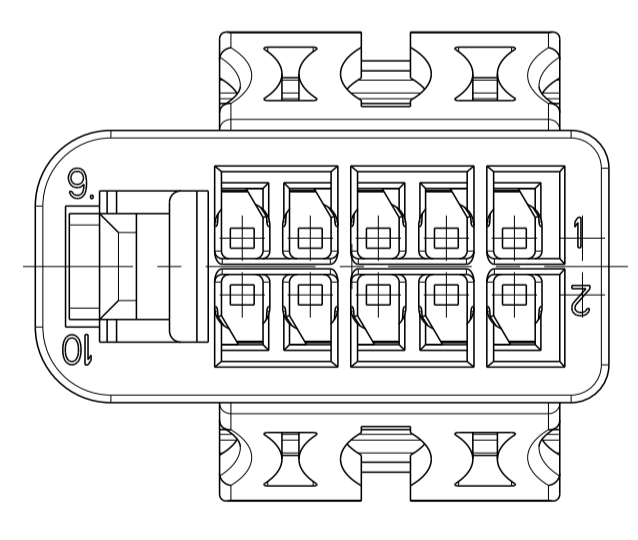
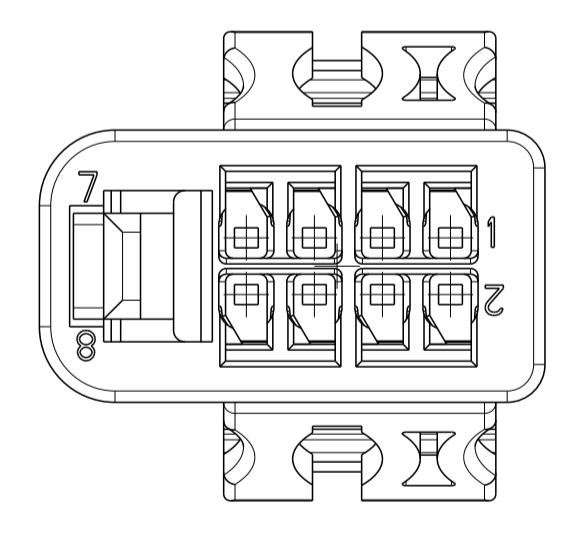
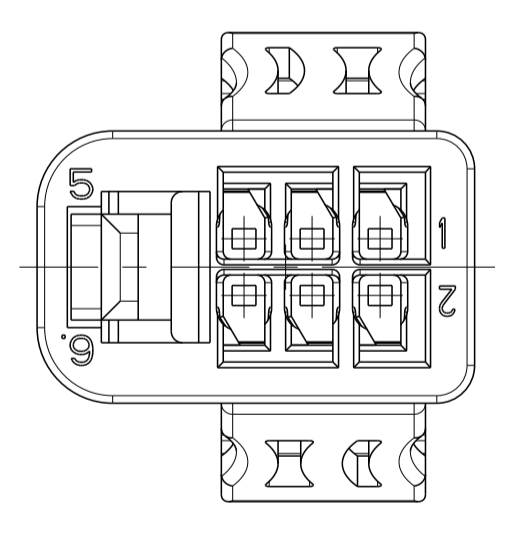
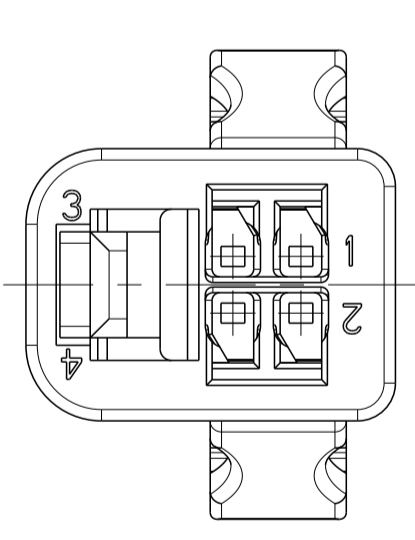
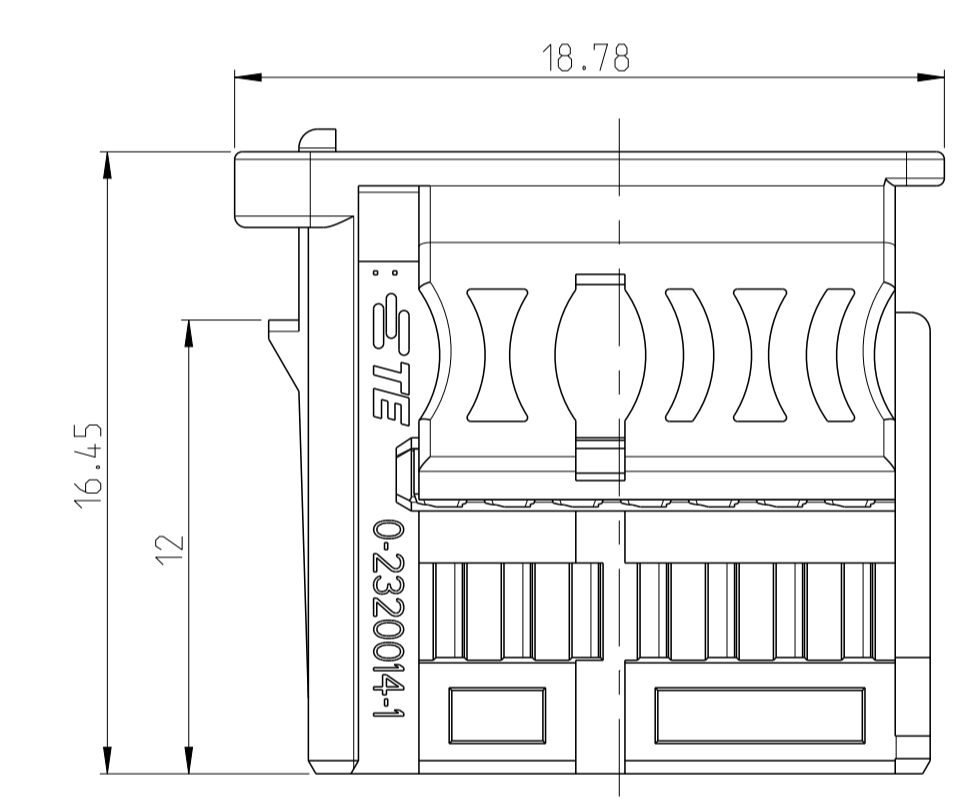
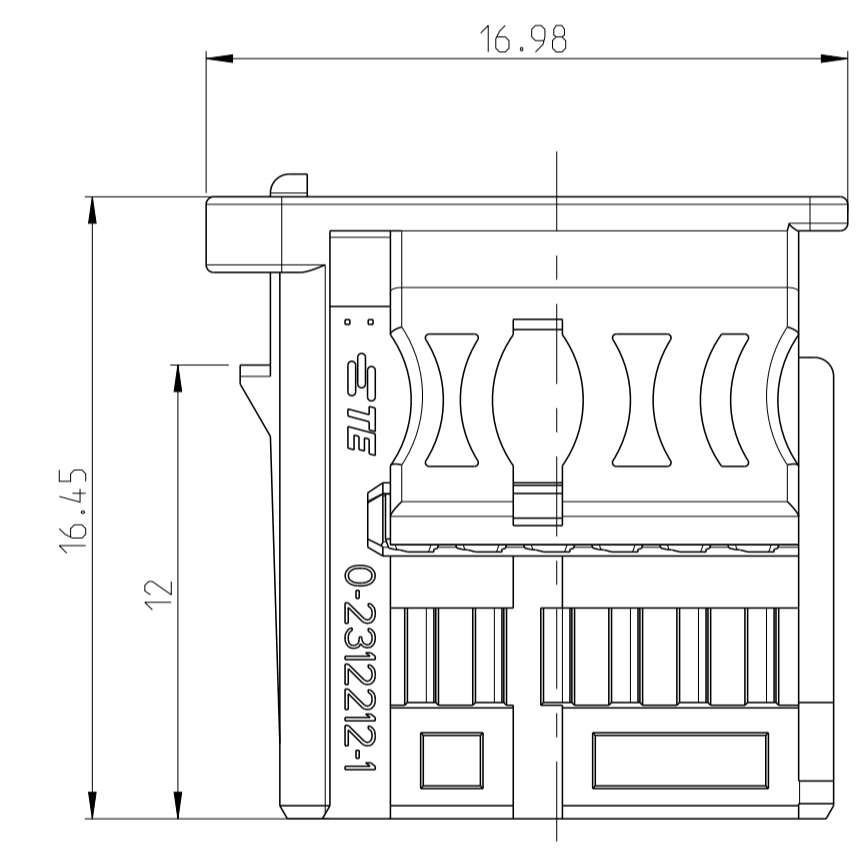
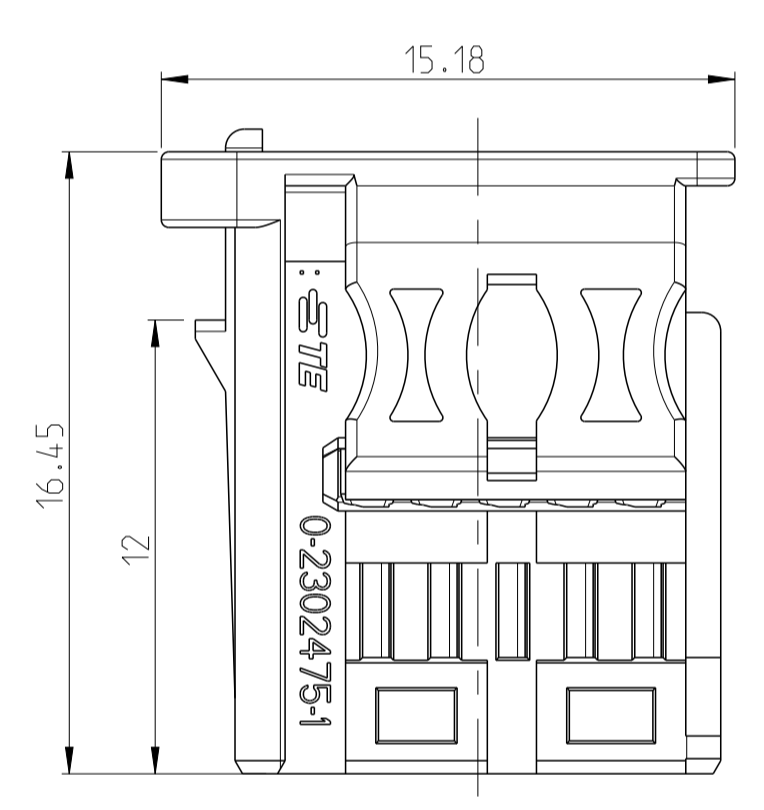
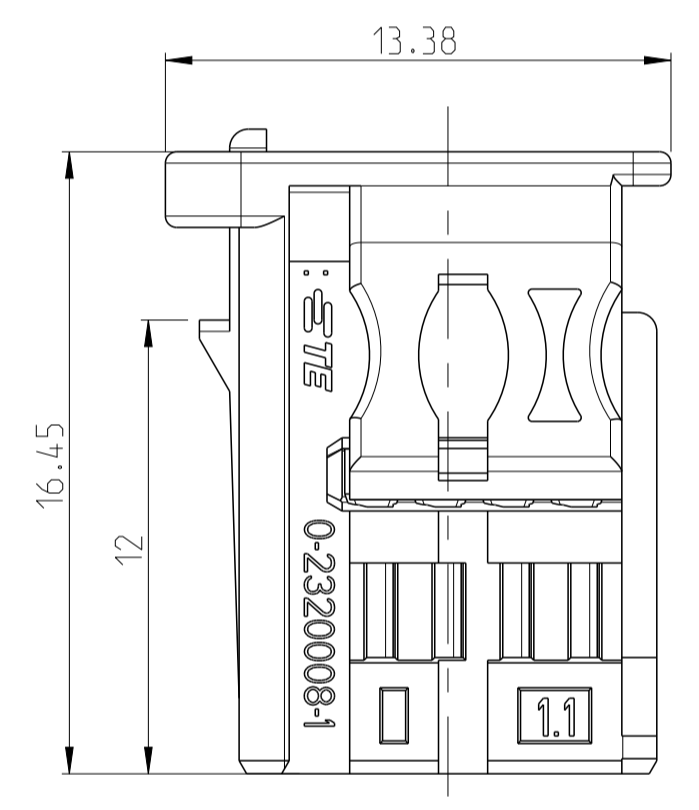
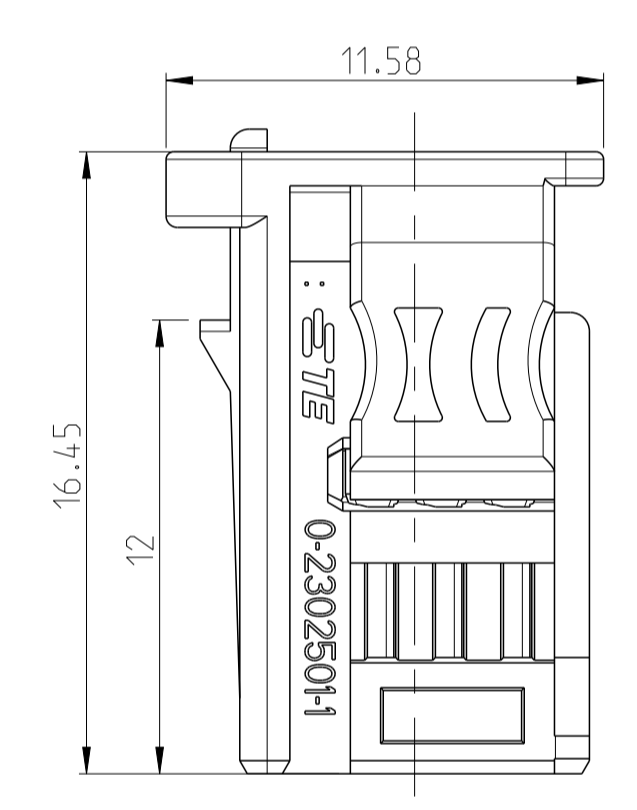
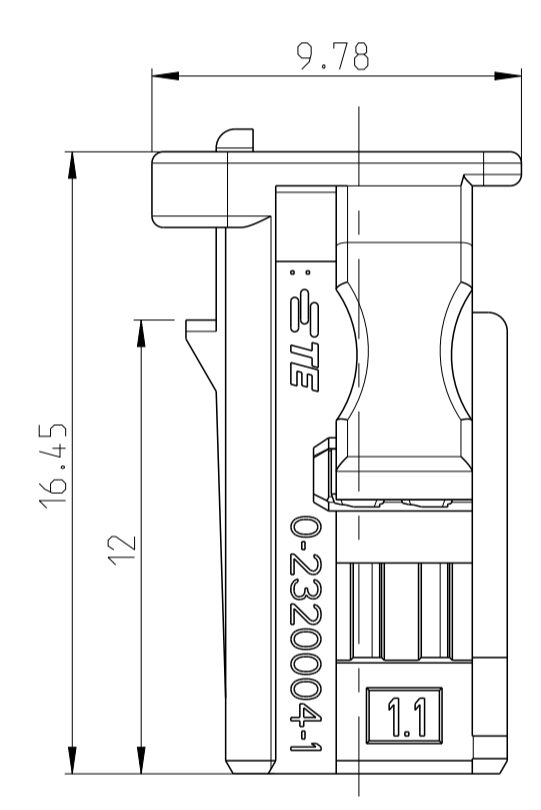
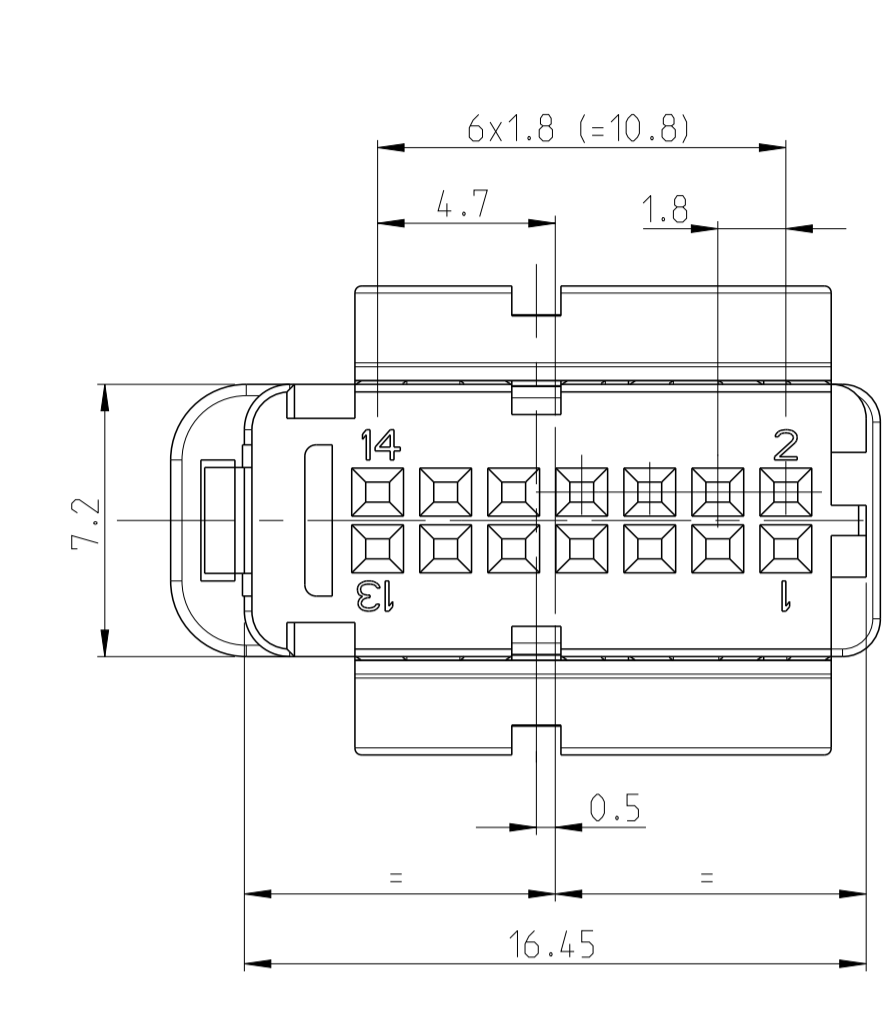
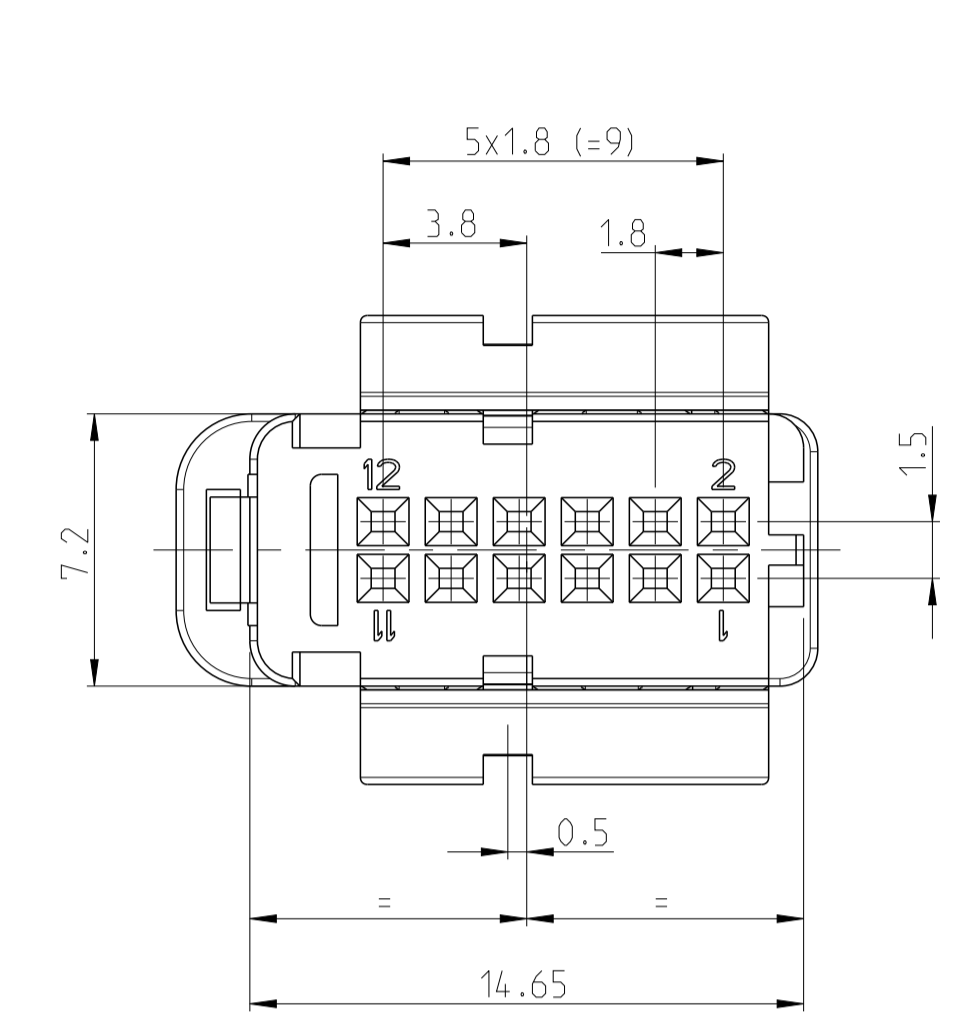
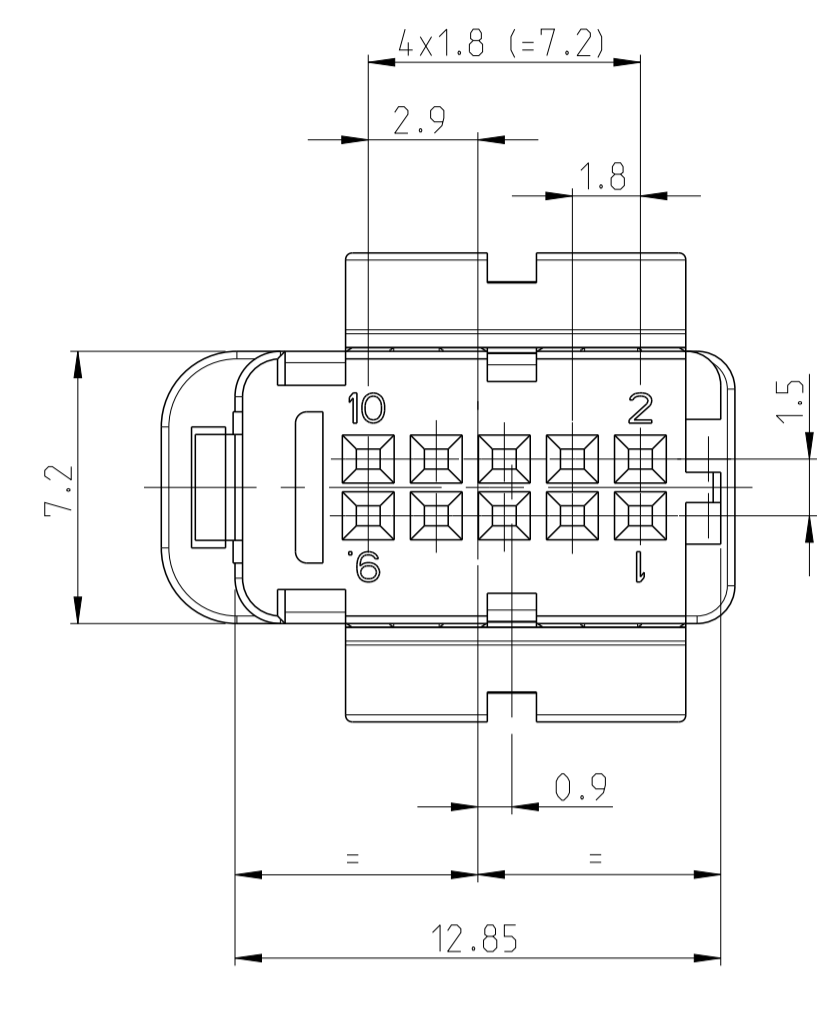
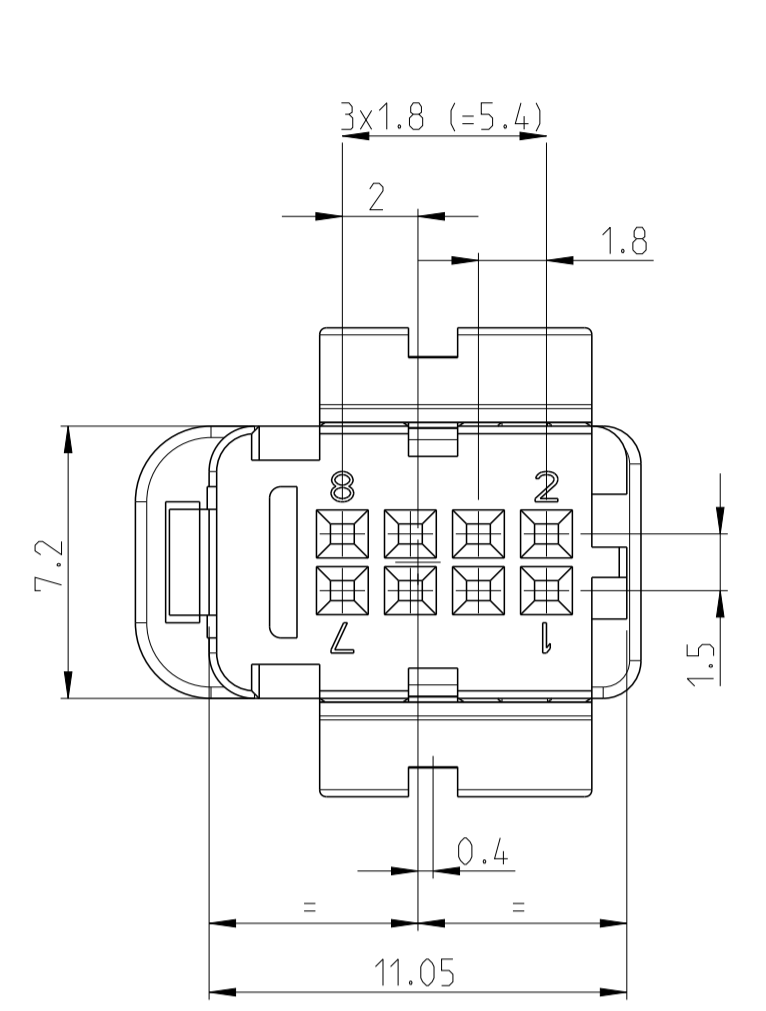
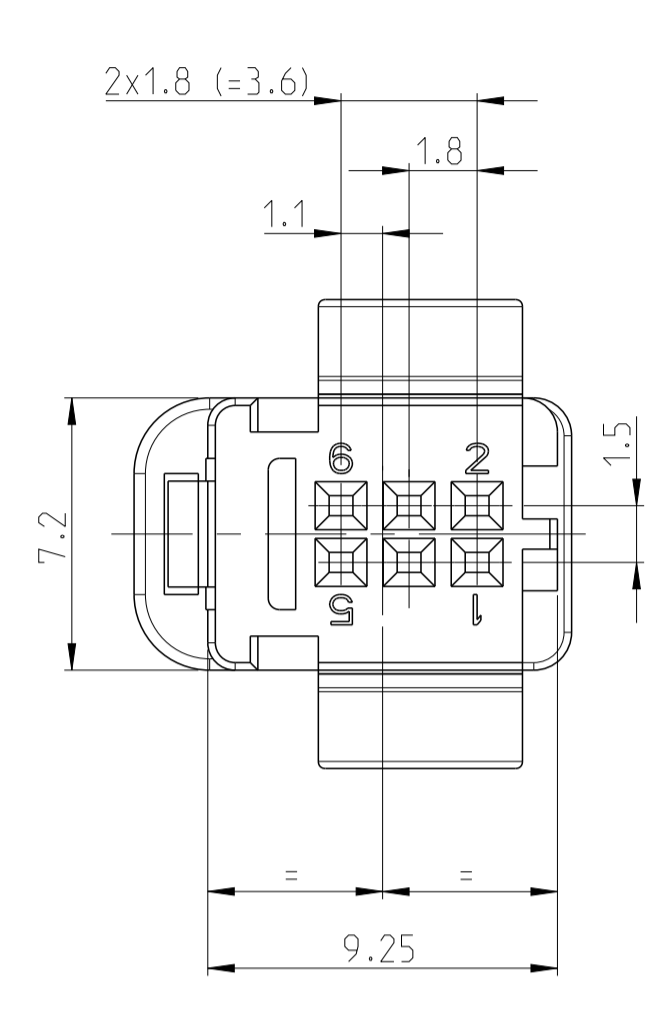
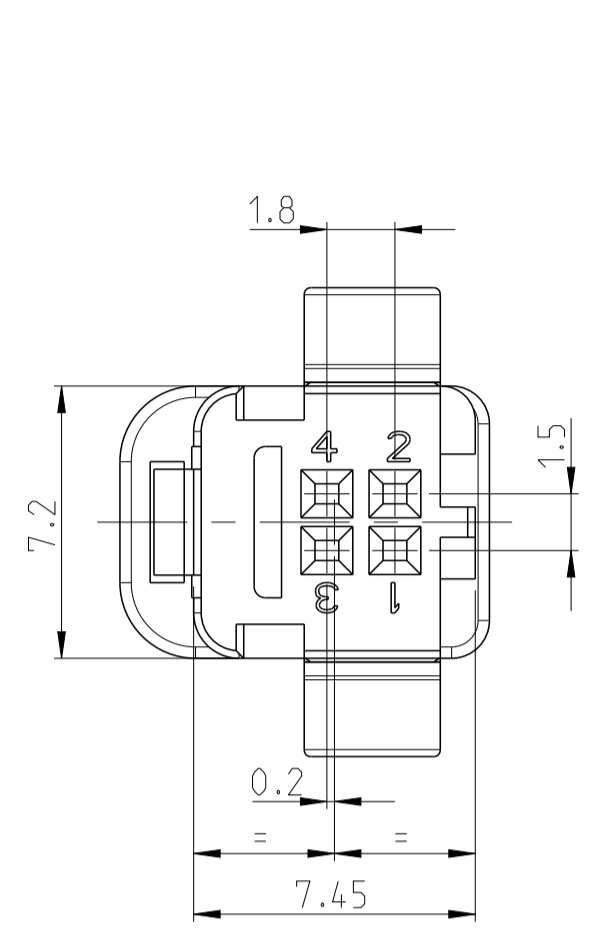
6 polig/POS.

8 polig/POS.

10 polig/POS.

12 polig/POS.

14 polig/POS.



Size ISO 14405  
 TOLERANCING ISO 8015  
 TOLERIERUNG ISO 8015

DIESE ZEICHNUNG IST EIN KONTROLLIERTES DOKUMENT.  
 BEMASSUNGEN UND TOLERANZEN GEMAESS GPS (ISO STANDARDS).

THIS DRAWING IS A CONTROLLED DOCUMENT.  
 DIMENSIONING AND TOLERANCING PER GPS (ISO STANDARDS).

DRN: M. Stein 23MAR2016  
 CHK: C. Boemmel 23MAR2016

**STE** TE Connectivity

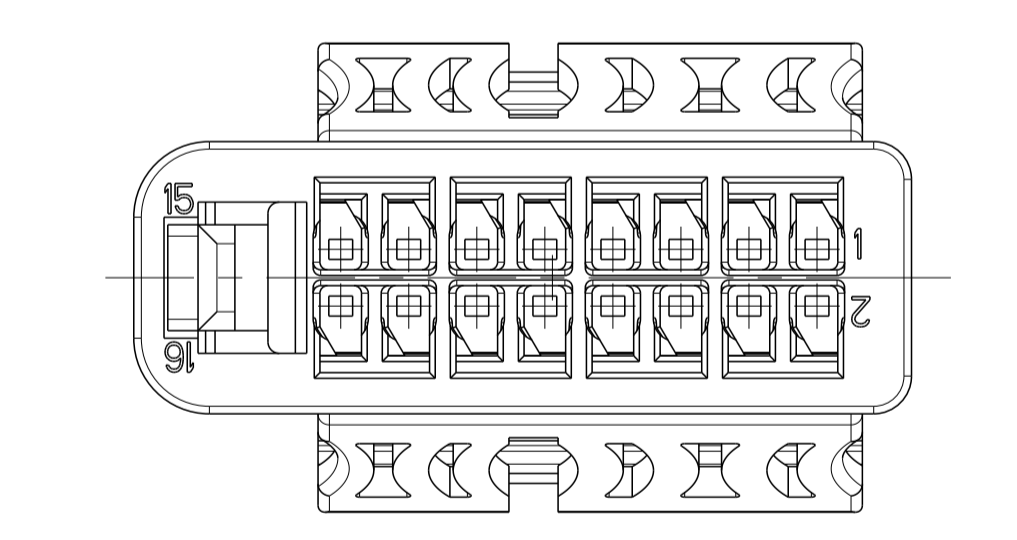
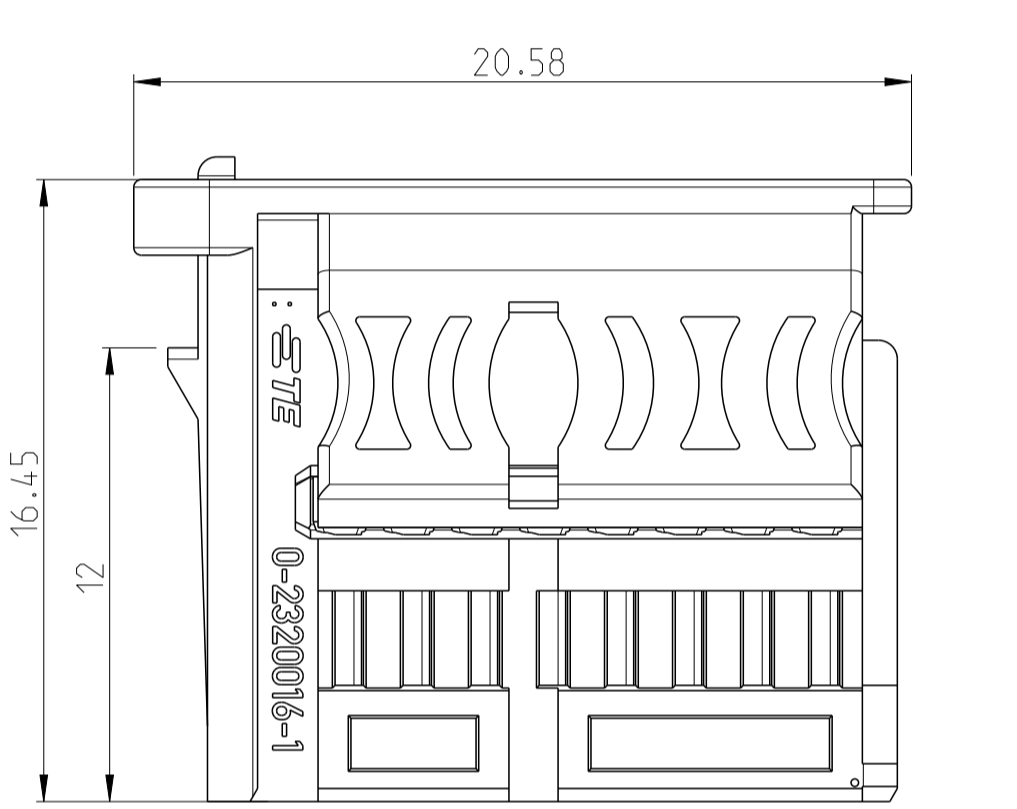
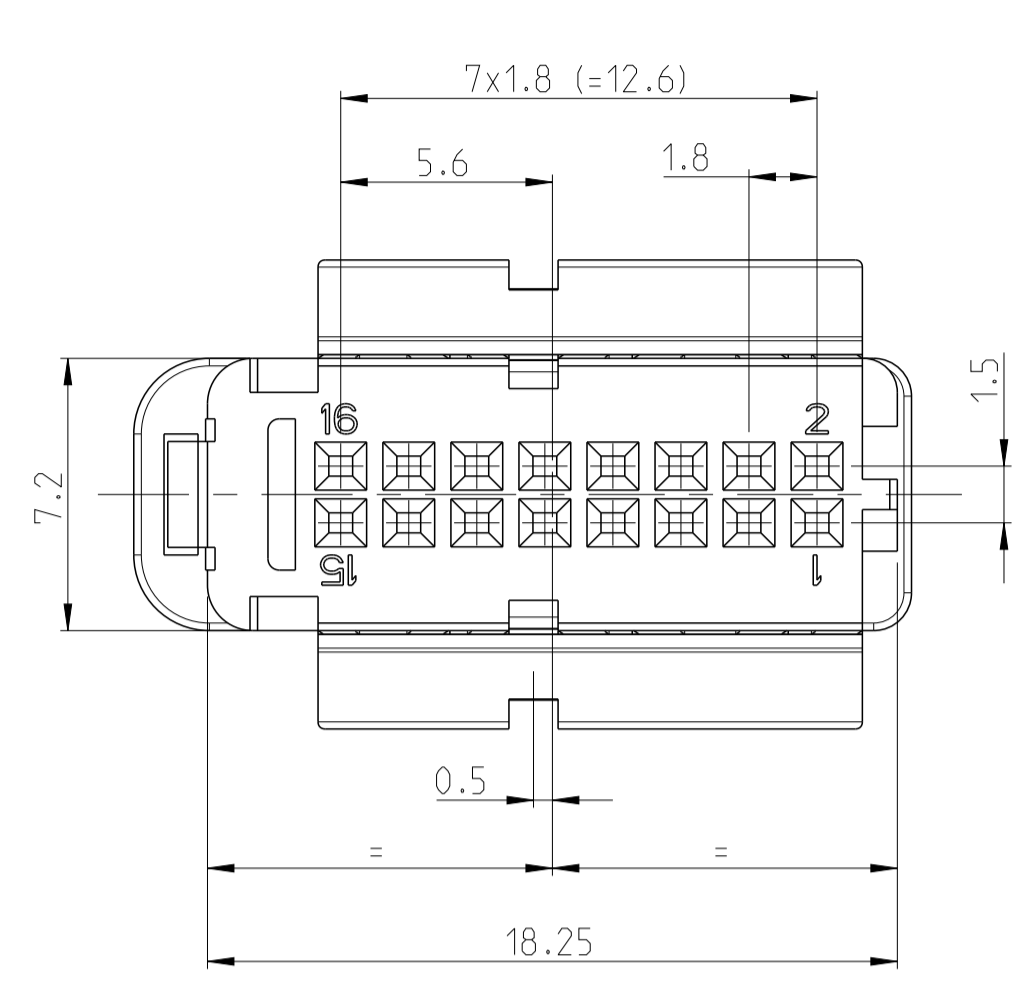
NAME: 4-22 pol., NanoMQS, Buchsengehaeuse  
 4-22 POS., NanoMQS, REC. HOUSING

SIZE: A1 CAGE CODE: 00779 DRAWING NO: 2303280  
 SCALE: MASSSTAB 5:1 SHEET: 2 OF 3 REV: A1

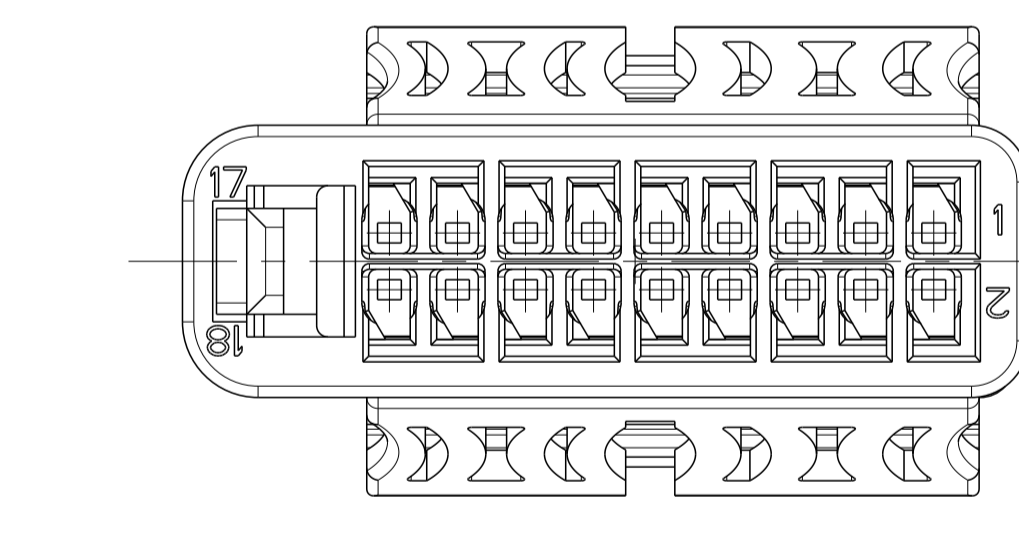
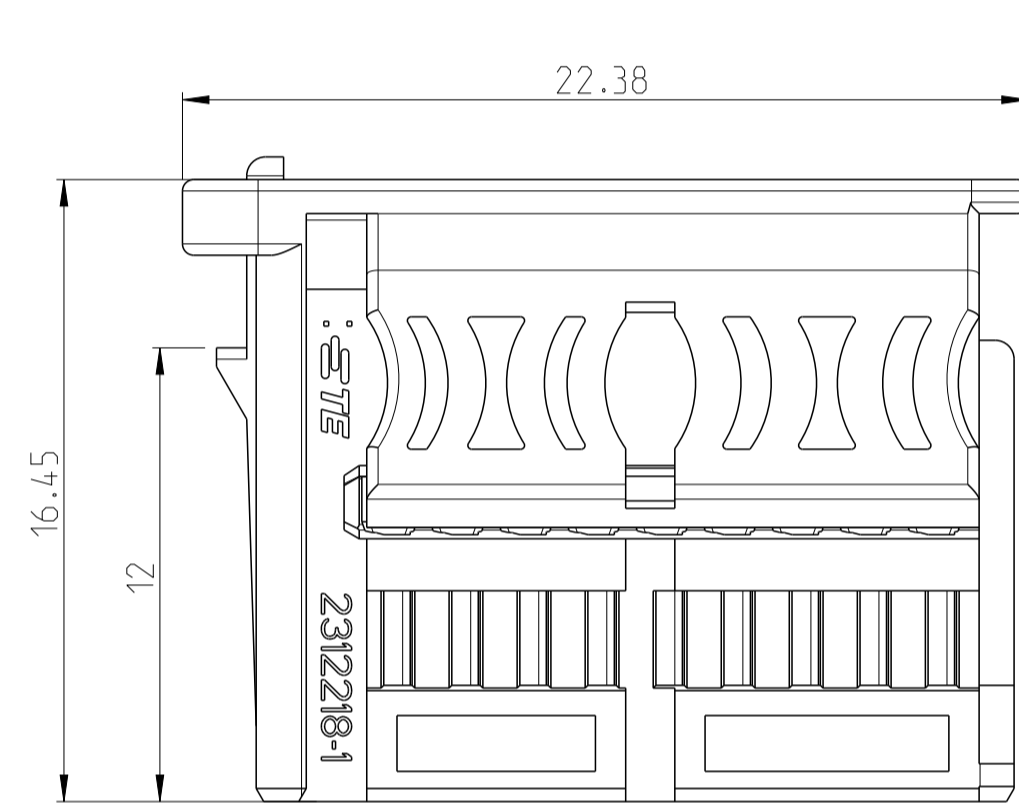
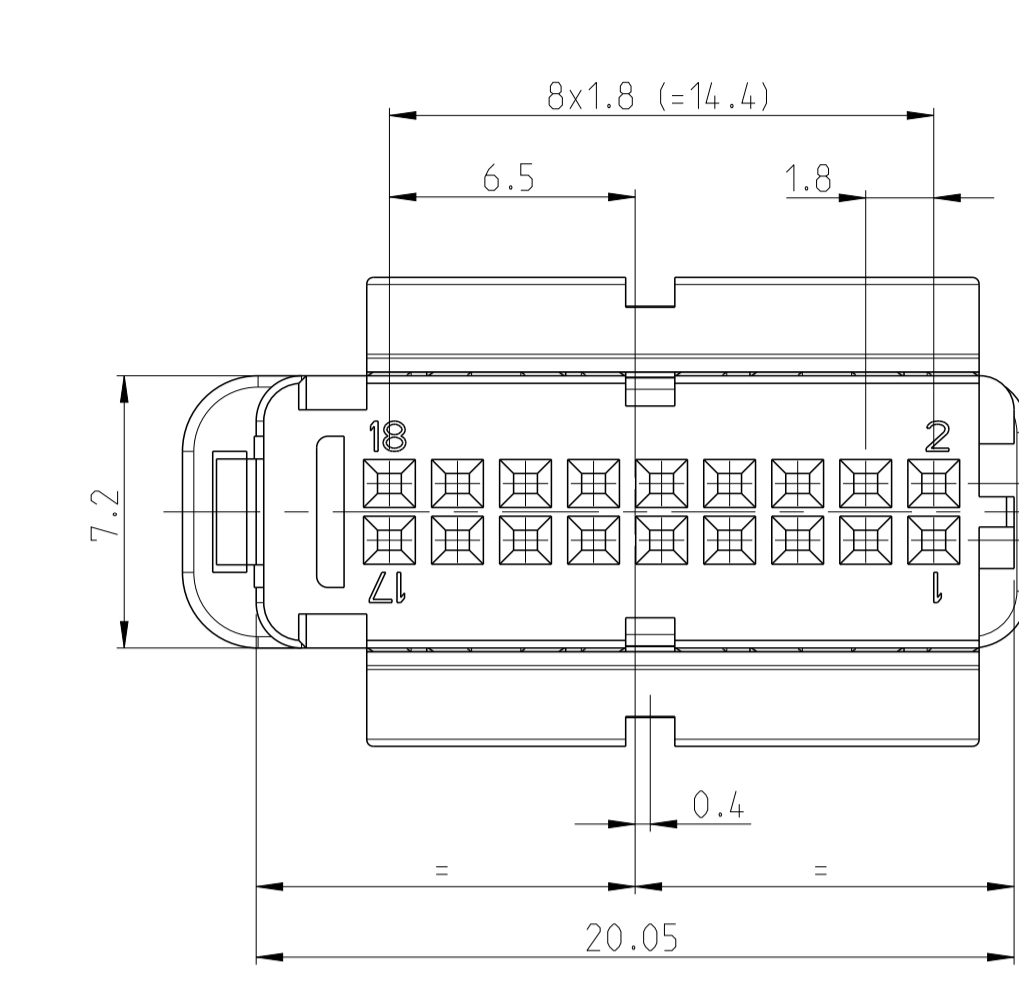
MATERIAL: SEE SHEET 1  
 FINISH/BELEGUNG/FARBE: SEE SHEET 1  
 WEIGHT/GEWICHT: SEE SHEET 1  
 CUSTOMER DRAWING

REV. NO.	DATE	BY	APPV.
1			
2			
3			
4			

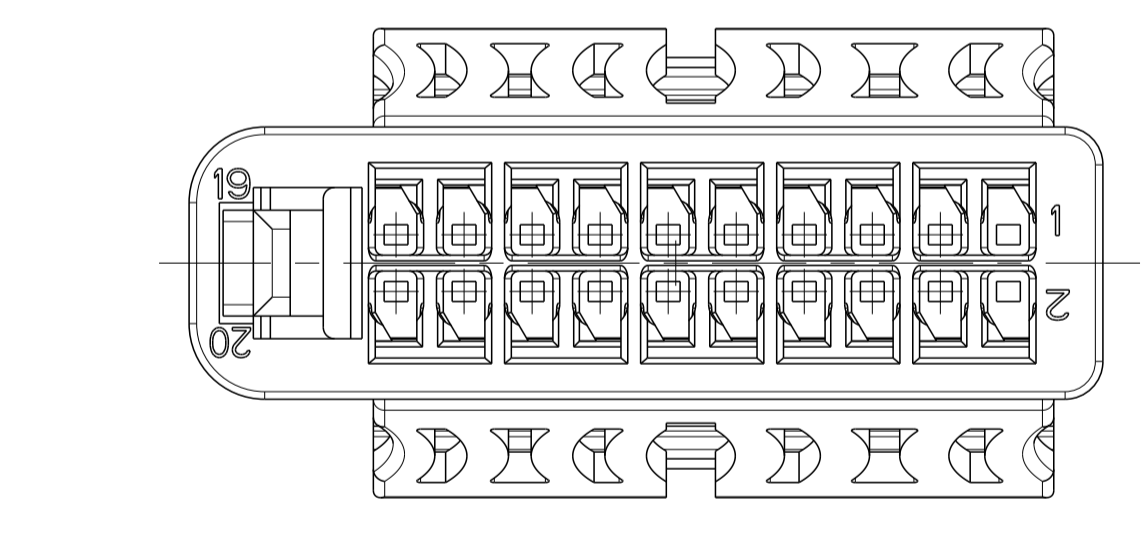
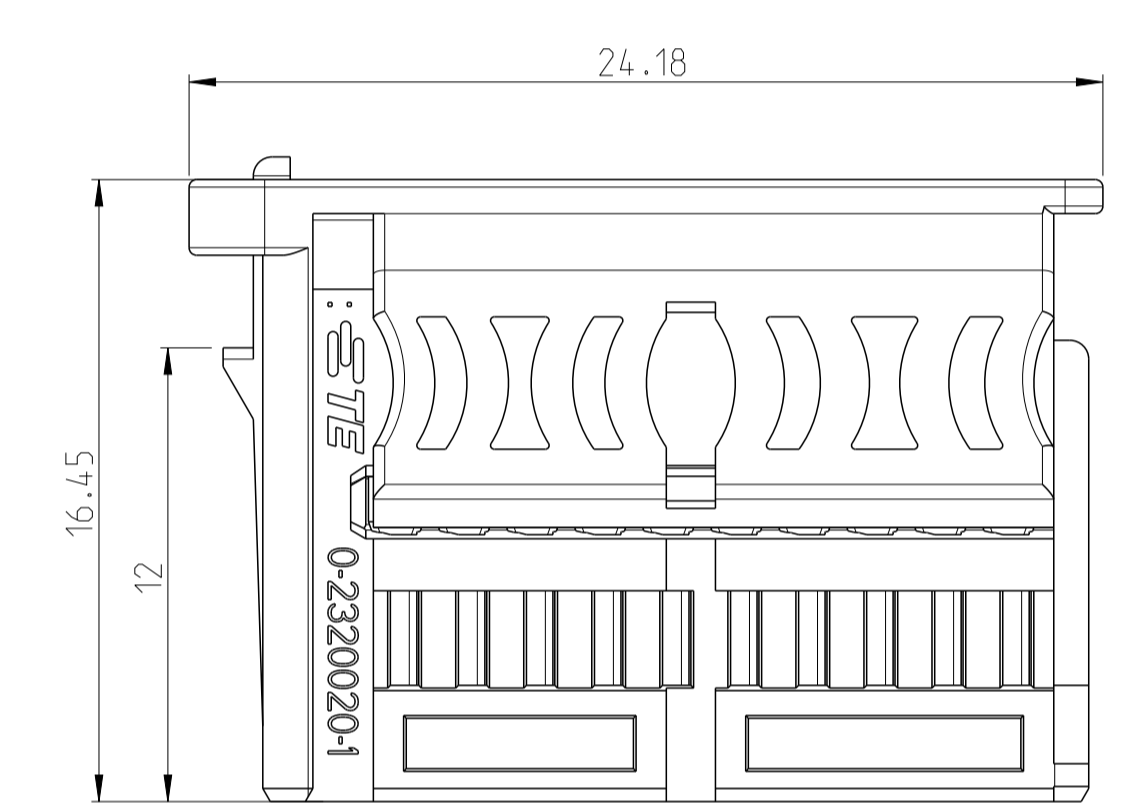
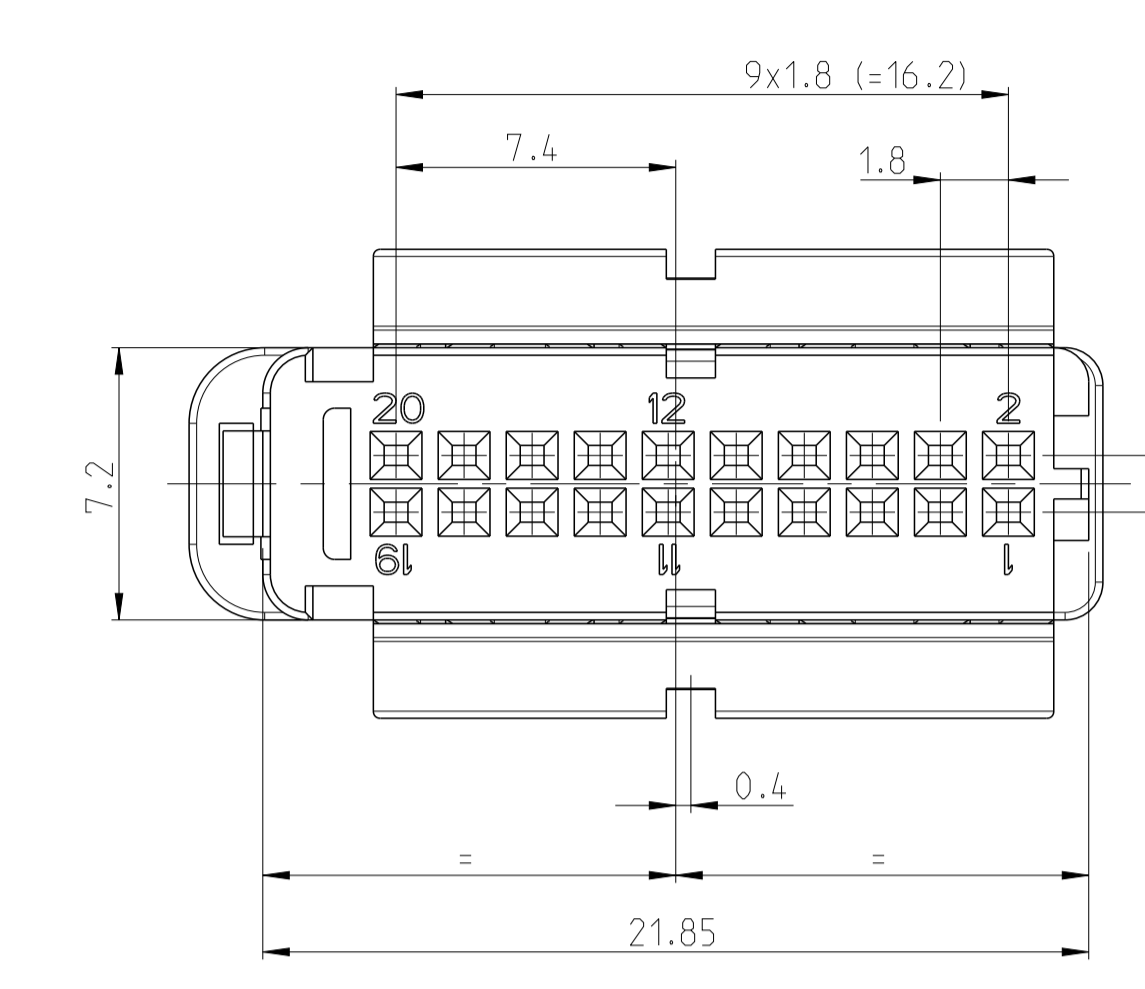
16 polig/POS.



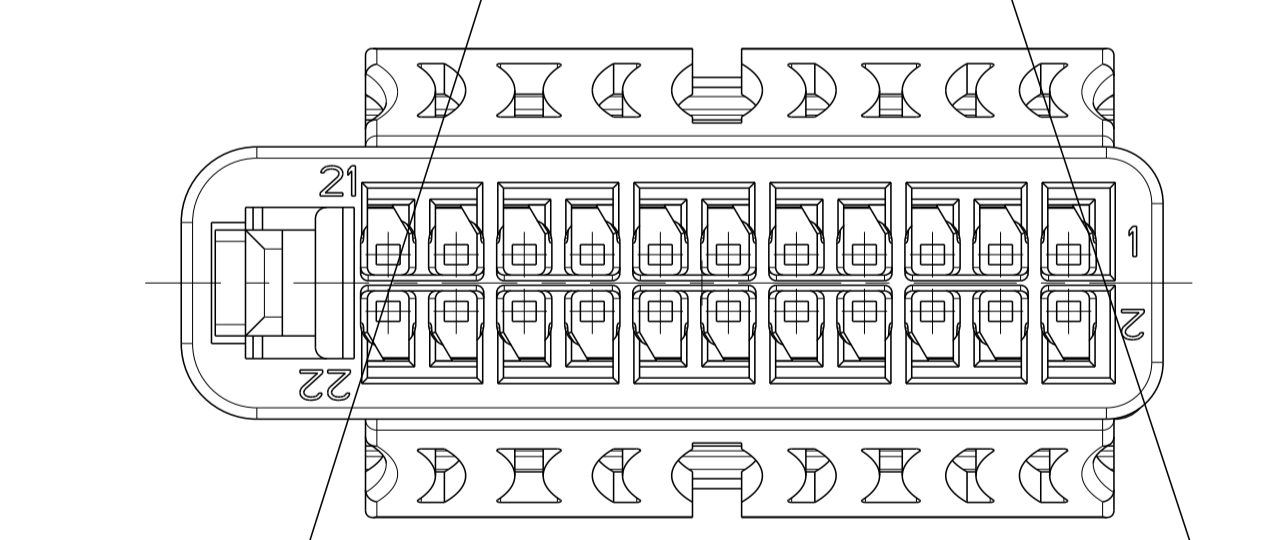
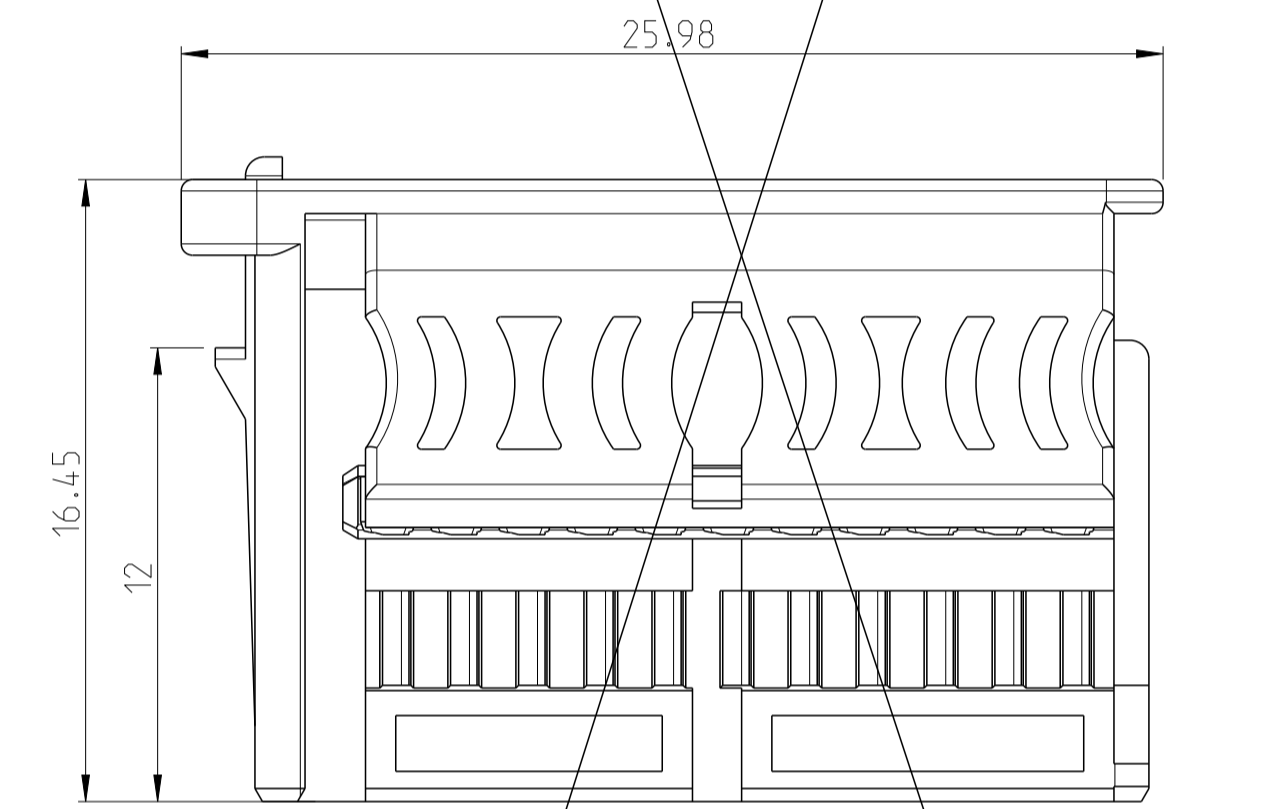
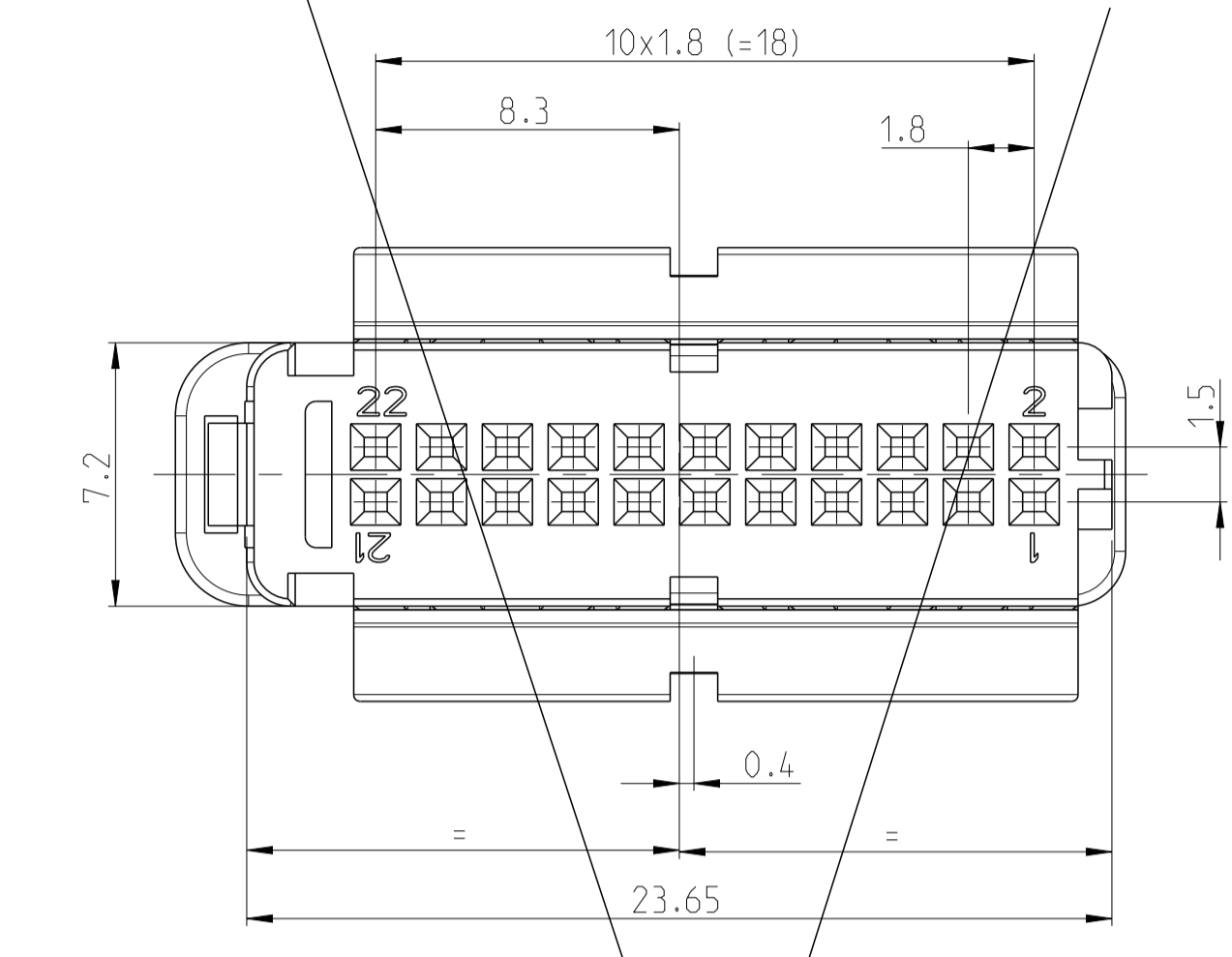
18 polig/POS.



20 polig/POS.



22 polig/POS.



DIESE ZEICHNUNG IST EIN KONTROLLIERTES DOKUMENT. DIMENSIONEN UND TOLERANZEN GEMÄSS GPS (ISO STANDARDS). THIS DRAWING IS A CONTROLLED DOCUMENT. DIMENSIONING AND TOLERANCING PER GPS (ISO STANDARDS).		Size ISO 14405 TOLERANCING ISO 8015 TOLERIERUNG ISO 8015	
DIMENSIONS: MASSENHEITEN: mm TOLERANCES UNLESS OTHERWISE SPECIFIED: ALL DIMENSIONS		DWN: M. Stein 23MAR2016 CHK: C. Boemmel 23MAR2016	
MATERIAL: SEE SHEET 1		PRODUCT SPEC: 108-94288-0 APPLICATION SPEC: 114-94033	
WEIGHT: SEE TABLE CUSTOMER DRAWING		NAME: 4-22 pol.. NanoMQS. Buchsengehäuse 4-22 POS.. NanoMQS. REC. HOUSING	
SCALE: MASSSTAB 5:1		SHEET: 3 OF 3 REV: A1	

## X-ON Electronics

Largest Supplier of Electrical and Electronic Components

*Click to view similar products for [Headers & Wire Housings](#) category:*

*Click to view products by [TE Connectivity](#) manufacturer:*

Other Similar products are found below :

[892-18-020-10-001101](#) [0010894062](#) [0010977306](#) [0015477636](#) [0015917161](#) [0022104068](#) [0022121042](#) [0022155065](#) [0022281023](#) [57102-F02-18ULF](#) [PCN6B-10P-2.5DS](#) [58102-G61-06LF](#) [582553-1](#) [0015911208](#) [01.001.5753.1](#) [0022285048](#) [0050291907](#) [02.125.8002.8](#)  
[CSU011177004](#) [622-0430](#) [63453-116](#) [636-1030](#) [636-1427](#) [636-3427](#) [636-4007](#) [641938-9](#) [65495-038](#) [65692-001LF](#) [65781-018](#) [65781-047](#)  
[65817-010LF](#) [67095-007LF](#) [67601157](#) [68631-112](#) [68645-018](#) [699319-000](#) [70.362.1628.0](#) [70-4210](#) [70-4226B](#) [70-4853B](#) [707-5028](#)  
[71.350.2428.0](#) [733-134](#) [733-162](#) [760-3052](#) [80.063.4001.1](#) [800-90-001-10-001000](#) [801-43-002-10-013000](#) [801-43-006-10-002000](#)  
[803-43-024-10-001000](#)