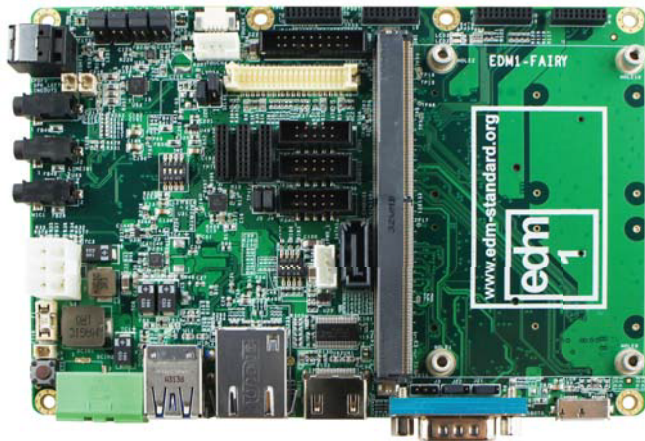


# EDM1-FAIRY



## Main Features

- Develop your mobile embedded device quickly with the EDM1-FAIRY Carrier Board which packs a robust set of sensors and interconnects.
- HDMI, TTL and LVDS display interfaces.
- Communication by dual PCI Express (with SIM cardslots).
- Dual CAN Bus, Dual UART, USB and 8 GPIO's for industrial control.



Power	LAN	TTL		GPMC		I <sup>2</sup> S 2 <sup>nd</sup>	SPDIF	CAN x2	SD	SPI x2	UART x2	Buttons + GPIO	RSVD
		LVDS	HDMI	PCIe x2	SATA 1 <sup>st</sup>	USB OTG	USB				I <sup>2</sup> S 1 <sup>st</sup>		

## Specifications

### Core System

Board-to-Board Connector	EDM connector (314-pin MXM3)
Compatible SOM	EDM Type 1

### Expansion Interfaces

Expansion Slots	2x mini-PCIe with SIM cardslot
-----------------	--------------------------------

### Internal Headers

Internal Display	1x 24-bit TTL RGB signals (expansion header) 1x single channel LVDS (expansion header)
Expansion Headers	CAN GPIO I <sup>2</sup> C I <sup>2</sup> S RS232 SATA SPI

### External Connectors

External Display	1x HDMI
Audio Connectors	1x 3.5mm jack Microphone 1x 3.5mm jack Stereo Audio in 1x 3.5mm jack Stereo Audio out S/PDIF (optical)
Network	1x RJ45
USB	1x USB 2.0 OTG 2x USB 2.0 Host
Serial	1x RS-232/422/485
Buttons	1x Reset
SD Cardslot	1x microSD cardslot

### Audio

Audio Codec	NXP SGTL5000
Audio Interface	TI TLV320AIC23B
Speaker	I <sup>2</sup> S (2 channel) Audio speaker connector (stereo) (2W pre-amplified)

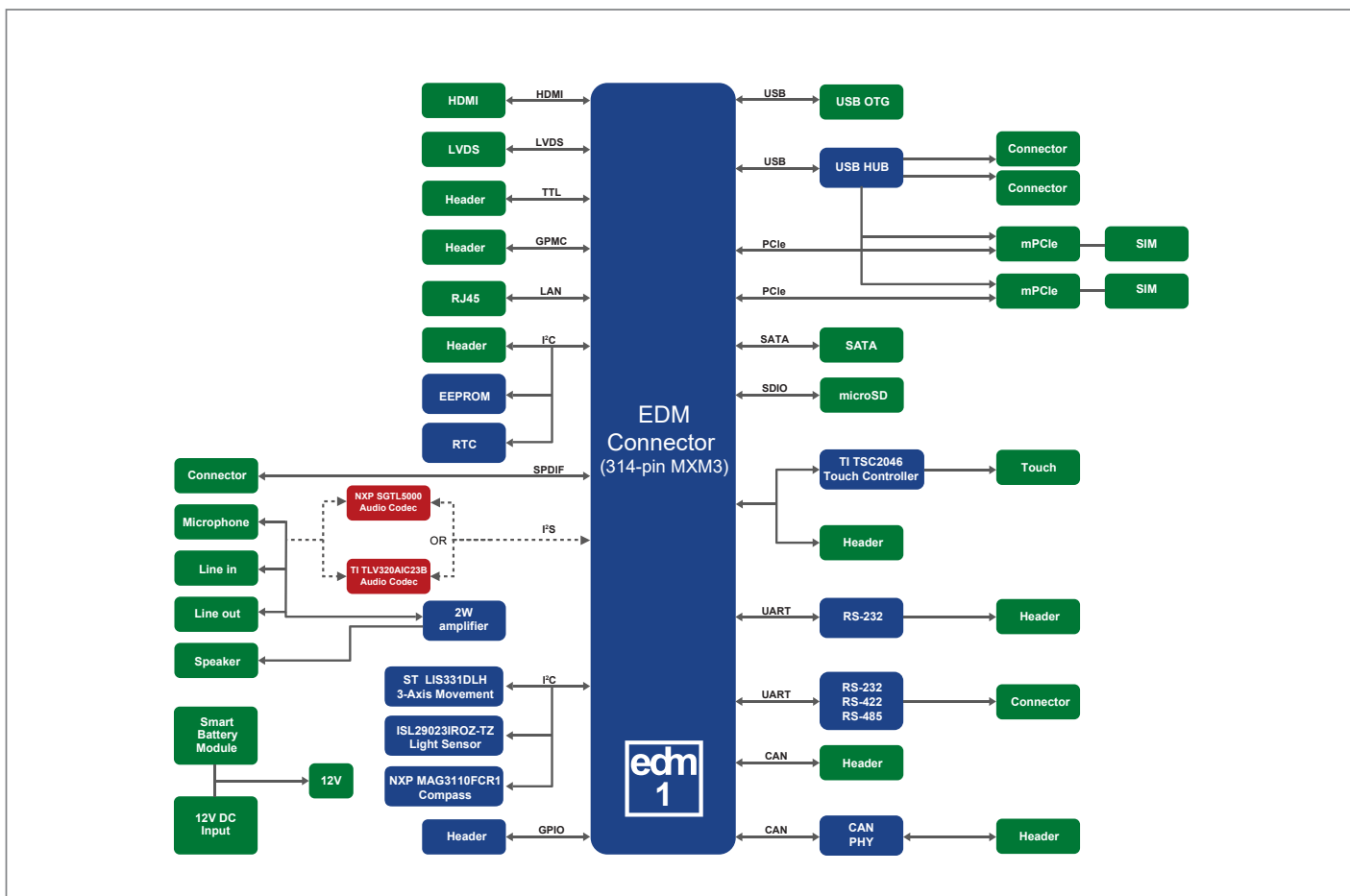
### Sensors

3-Axis Movement	STMicroelectronics LIS331DLH
Light Sensor	Intersil ISL29023IROZ-TZ
Compass	NXP MAG3110FCR1
RTC	maxim integrated DS1337+ 2-pin header battery connector

### Power Specifications

Power Input	12V DC +/-10%
Power Connector	2-pin 5.08mm Terminal Block 2EHDRM-02P
Power Consumption	Depending on Configuration

### Block Diagram



### Environmental and Mechanical

Dimensions	147 x 102 mm
Form Factor	3.5"
Weight	115 grams
Temperature	Commercial: 0° to +60° C
Relative Humidity	10 to 90 %
MTBF	>100 000 Hours
Shock	50G/25ms
Vibration	20G/0-600Hz
Certification	Compliant with CE / FCC / RoHS / REACH directives

### Ordering Information

EDM1-FAIRY-XXXXX

	Code	Description
Startkit	-	Board Only
	START	Evaluation Kit

#### EDM1-FAIRY

FAIRY EDM Type 1 Carrier Board

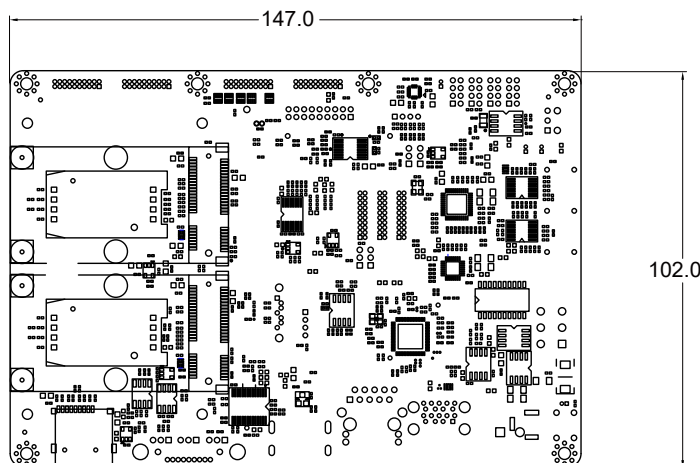
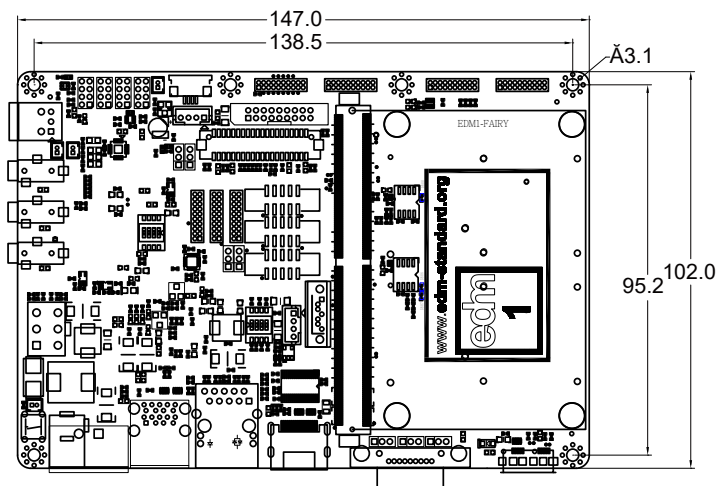
#### EDM1-FAIRY-START

FAIRY EDM Type 1 Evaluation Board including cablekit and adaptor

\* Feel free to contact us for customization requests.

### Dimensions

(units in mm)



## X-ON Electronics

Largest Supplier of Electrical and Electronic Components

*Click to view similar products for [Development Boards & Kits - ARM category](#):*

*Click to view products by [TechNexion manufacturer](#):*

Other Similar products are found below :

[SAFETI-HSK-RM48](#) [PICOHOBBITFL](#) [CC-ACC-MMK-2443](#) [TWR-MC-FRDMKE02Z](#) [EVALSPEAR320CPU](#) [EVB-SCMIMX6SX](#)  
[MAX32600-KIT#](#) [TMDX570LS04HDK](#) [TXSD-SV70](#) [OM13080UL](#) [EVAL-ADUC7120QSPZ](#) [OM13082UL](#) [TXSD-SV71](#)  
[YGRPEACHNORMAL](#) [OM13076UL](#) [PICODWARFFL](#) [YR8A77450HA02BG](#) [3580](#) [32F3348DISCOVERY](#) [ATTINY1607](#) [CURIOSITY](#)  
[NANO](#) [PIC16F15376](#) [CURIOSITY NANO BOARD](#) [PIC18F47Q10](#) [CURIOSITY NANO](#) [VISIONSTK-6ULL V.2.0](#) [80-001428](#) [DEV-17717](#)  
[EAK00360](#) [YR0K77210B000BE](#) [RTK7EKA2L1S00001BE](#) [MAX32651-EVKIT#](#) [SLN-VIZN-IOT](#) [LV18F V6 DEVELOPMENT SYSTEM](#)  
[READY FOR AVR BOARD](#) [READY FOR PIC BOARD](#) [READY FOR PIC \(DIP28\)](#) [EVB-VF522R3](#) [AVRPLC16 V6 PLC SYSTEM](#)  
[MIKROLAB FOR AVR XL](#) [MIKROLAB FOR PIC L](#) [MINI-AT BOARD - 5V](#) [MINI-M4 FOR STELLARIS](#) [MOD-09.Z](#) [BUGGY +](#)  
[CLICKER 2 FOR PIC32MX + BLUETOOT](#) [1410](#) [LETS MAKE PROJECT PROGRAM. RELAY PIC](#) [LETS MAKE - VOICE](#)  
[CONTROLLED LIGHTS](#) [LPC-H2294](#) [DSPIC-READY2 BOARD](#) [DSPIC-READY3 BOARD](#) [MIKROBOARD FOR ARM 64-PIN](#)  
[MIKROLAB FOR AVR](#)