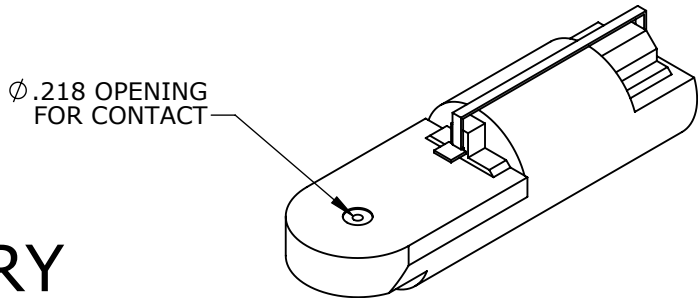
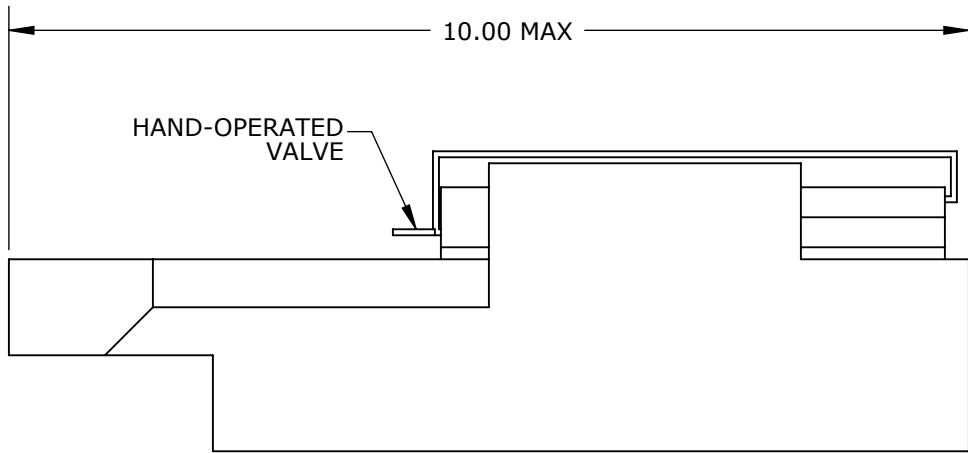
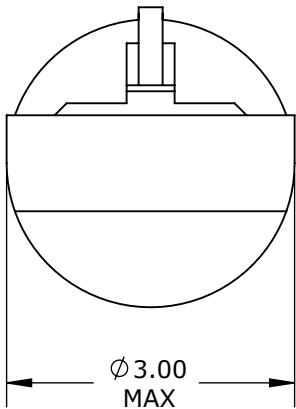


PART NUMBER: 359-1 CUSTOMER PRINT

DIE CLOSURES		
SEL NO.	Ø GO	Ø NO-GO
1	.0280	.0330
2	.0320	.0370
3	.0360	.0410
4	.0390	.0440
5	.0450	.0500
6	.0520	.0570
7	.0590	.0640
8	.0680	.0730


USE GAGE DMC P/N: G125 AT SELECTOR SETTING 4

NOTES:
 1. DIMENSIONS ARE FOR REFERENCE ONLY
 2. USED WITH BASE MOUNT: CXA P/N: 359-3



PROPRIETARY

THIS DOCUMENT CONTAINS CONFIDENTIAL INFORMATION PROPRIETARY TO CONXALL CORPORATION. ANY REPRODUCTION, DISCLOSURE, OR USE OF THIS DOCUMENT /INFORMATION IS EXPRESSLY PROHIBITED UNLESS AUTHORIZED IN WRITING BY CONXALL CORPORATION.

B	AN	01-14-14	RELEASED PER DOR 14-E149SL #2	
A	BZ	01-30-09	DRAWING CREATED PER DOR 09-1201JS	
REV.	INIT.	DATE	DESCRIPTION	
			ALL INFORMATION ILLUSTRATED IS THE PROPERTY OF CONXALL CORPORATION. UNAUTHORIZED DUPLICATION OR DISTRIBUTION OF THIS DOCUMENT IS PROHIBITED. ALL UNITS ARE IN FEET, INCHES, FRACTION OF INCHES AND DECIMALS.	ORIG. DRAWN BY: BZ DATE: 01-30-09 CHECKED BY: APPROVED BY:
			 601 E. WILDWOOD VILLA PARK, IL 60181	
			TITLE: PNEUMATIC CRIMP TOOL	
			CUSTOMER: STANDARD PRODUCT	
SCALE: NTS		SIZE: A	SHEET: 1 OF 1	
FILE: 359-1	DIRECTORY: SLW	PART NUMBER: 359-1	REV: B	

X-ON Electronics

Largest Supplier of Electrical and Electronic Components

Click to view similar products for [Crimpers / Crimping Tools](#) category:

Click to view products by [Switchcraft](#) manufacturer:

Other Similar products are found below :

[010-0096](#) [CT150-2-D02](#) [CT150-6-RH07](#) [622-6441LF](#) [63484-3701](#) [63800-8355](#) [63819-1875](#) [63819-2875](#) [63827-5375](#) [64005-0175](#) [662903-2](#)
[690602-6](#) [7-23471-1](#) [734611-1](#) [762637-1](#) [811242-5](#) [91362-1](#) [1-21002-7](#) [1213566-1](#) [12387119-6](#) [1-22548-4](#) [125442-1](#) [1310G2](#) [1333249-1](#)
[1-354003-0](#) [1338301-1](#) [AP105-DF11-2428S\(64\)](#) [1456088-1](#) [1-45804-6](#) [1490357-3](#) [15397700](#) [AX100749](#) [1-59619-7](#) [1596970-1](#) [1-59619-8](#)
[1901238-2](#) [2119581-1](#) [KTH-1079](#) [KTH-2022](#) [KTH-2260](#) [904139-1](#) [307130-2](#) [189765-1](#) [2119783-1](#) [AP105-DF11-2428S\(63\)](#) [227-1454-1](#) [2-](#)
[305183-0](#) [23142-5](#) [240658-1](#) [28S2M078133103](#)