

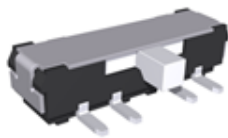
SLIDE SWITCH

Operation: SMT/立式 中大型 8PIN 三挡位 滑动开关 [柄长可定制]



ITEM NO.: MS-2346K-G (Series)

(L13.0mm×W3.5mm×H3.50mm SLIDE-SWITCH)



表面貼裝 SMT

正向操作 DOWN

精密部品 NICETY

可靠 STABILIZE

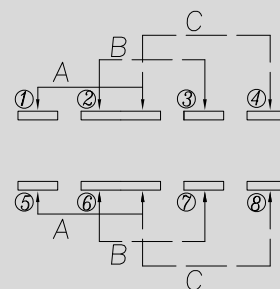
適合環保 RoHS

Technical parameter

PROJECT	LEVEL	A[better product]	B[average product]
Electrical	Contact Rating	0.3A, 30V DC	
	Initial Contact Resistance	50mΩ max.	
Properties	Insulation Resistance	100MΩ min.500V DC	Skey/PD: 100MΩ min.300V DC
	Withstand Voltage	300V AC for 1 minute	250 V AC for 1 minut
Durable Performance	There No Load	15,000 Cycles	10,000 Cycles
	Rated Load	12,000 Cycles	8,500 Cycles
	Storage temp.	-25℃~+75℃(Operating Temp:)	
	Operating Force	2.6N. (1N.=100gram-force) ±0.5N	
	Heat Rrsistance	IR Reflow:255℃, 5sec. Manual:350℃, 3sec.	

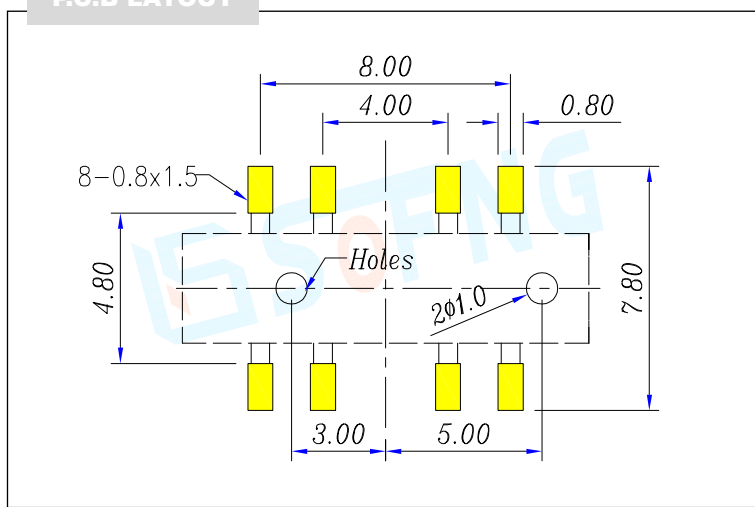
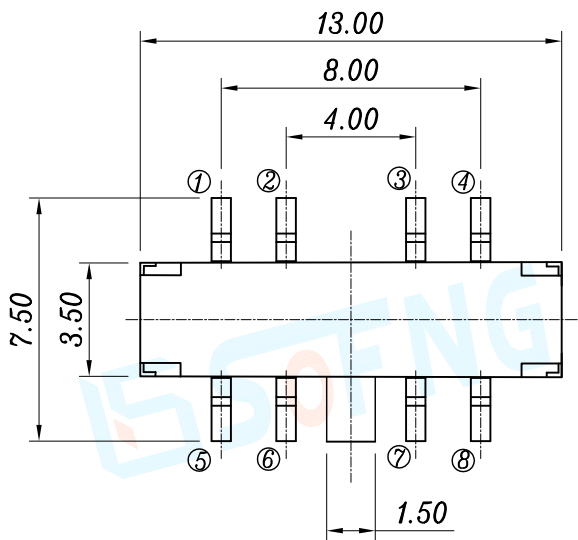
Material declaration		
No.	NAME	Description
1	拨柄	PA46 耐热尼龙塑料
2	盖板	C5191R-H 磷铜[镀银]
3	基座	LCP 30%G/F (Black)耐热塑胶
4	弹片	Beryllium bronze 铍青铜[单面镀银]
5	嵌件	C5191R-H 磷铜[镀银]

CIRCUIT DIAGRAM



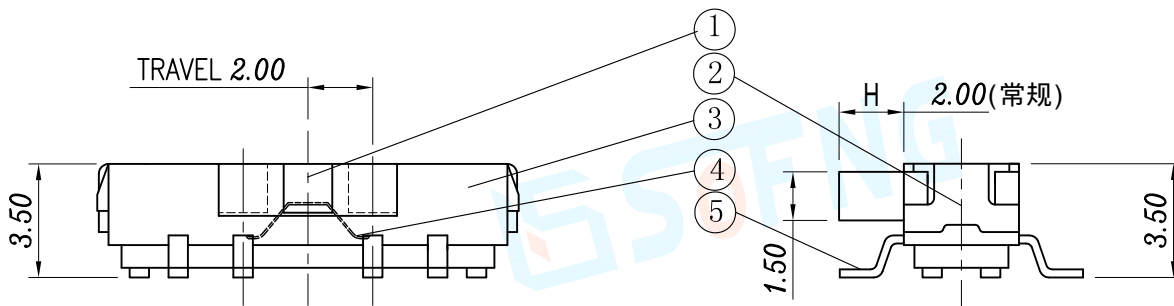
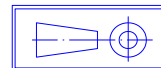
Unit:mm

P.C.B LAYOUT



MS-2346K - G*

产品型号 拨柄高度
G2=2.0mm
G3=3.0mm
G4=4.0mm



X-ON Electronics

Largest Supplier of Electrical and Electronic Components

Click to view similar products for [Slide Switches](#) category:

Click to view products by [SOFNG](#) manufacturer:

Other Similar products are found below :

[M43R](#) [MHS133K](#) [MMD](#) [MSS12A](#) [1825074-1](#) [1825160-3](#) [1825167-2](#) [K232CB](#) [25139NLDB](#) [25449NAH](#) [SLB1240R45](#) [1825078-1](#)
[1825269-1](#) [1825270-2](#) [STS141RA04](#) [T2215BEN506](#) [GH46P000001](#) [GH49P010001](#) [M42A](#) [AYZ0202AG](#) [L203091MS02Q](#) [4-1437581-7](#)
[X2225CR-437W](#) [48BFSP3M2QT](#) [1101M1S3ZB8E2](#) [1-1437581-1](#) [EG1218REDACTUATOR](#) [MSS42G](#) [T105S1CWZBE](#) [SLB124145](#)
[SLB1280R5](#) [TG39W000050](#) [25149NAH](#) [25439NAH](#) [25436NAH6](#) [TG36Y000050](#) [NK236X693](#) [SL-1211C1B8](#) [46204LRX](#) [1977143-4](#)
[HASS0194](#) [JS0001](#) [25149NAB](#) [GR5-1323-0800](#) [25549NA6](#) [GH36Y410001](#) [25446NAB](#) [GH39P000001](#) [25439NAB](#) [SK-13D07-G030](#)