



## Semtech Antenna – 5-in-1 Dual Sharkfin for XR80 and XR90

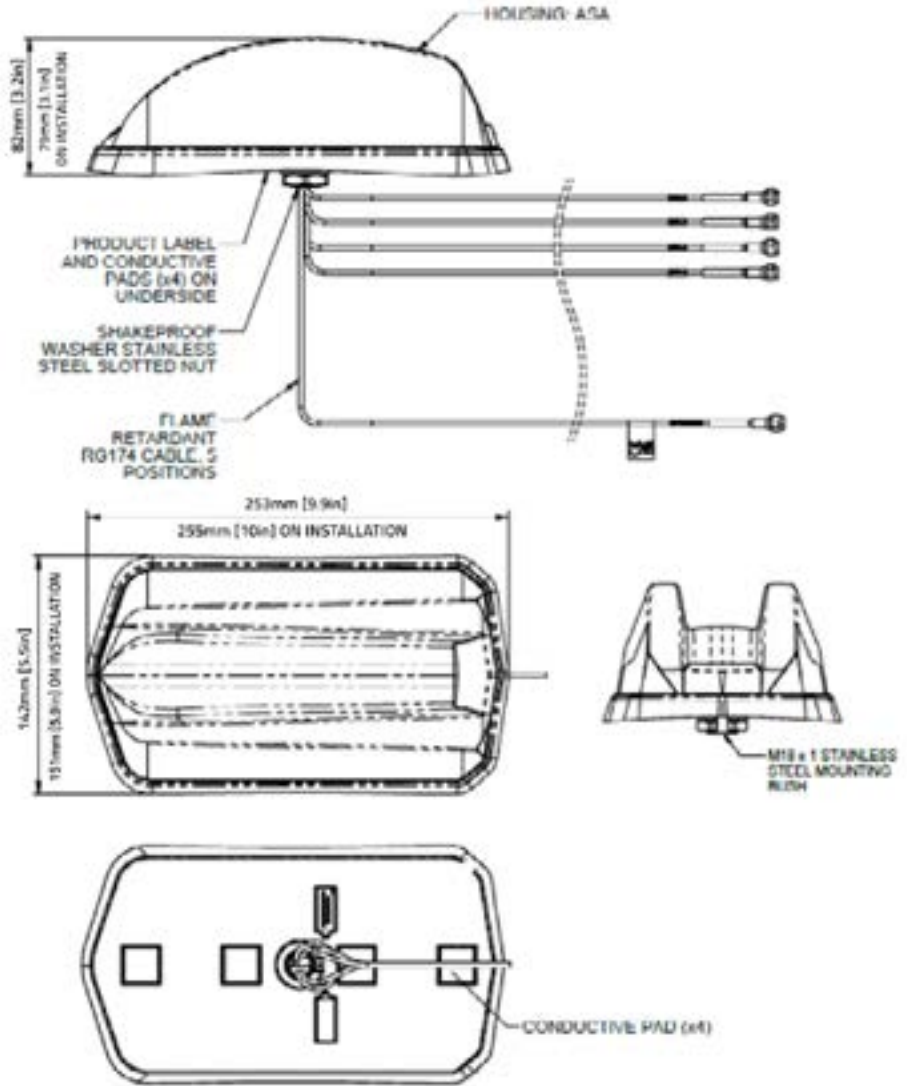
The 5-in-1 Dual Sharkfin is a specialized antenna solution engineered and certified for AirLink® XR80 mobility applications.

The antenna has a sleek sharkfin-style housing featuring a 4x4 MIMO for 4G/5G (617-6000MHz) and GNSS with an integrated gain 26dB LNA for optimized performance.

		Specification	
<b>PART NO.</b>		6001446 (Black)/6001524 (White)	
<b>ELECTRICAL DATA</b>			
<b>Frequency Range</b>	4G/5G Elements	617-960MHz / 1427-6000MHz	
<b>Peak gain: Isotropic*</b>	4G/5G Elements	617-960MHz	4.2dBi
		1427-6000MHz	7.1dBi
<b>Isolation*</b>	4G/5G Elements	617-960MHz	≥7dB
		1427-6000MHz	≥ 16dB
<b>Typical Efficiency</b>	4G/5G Elements	617-960MHz	61%
		1427-6000MHz	71%
<b>Correlation Co-efficient</b>	4G/5G Elements	<0.25	
<b>Pattern</b>	Omni-directional		
<b>Impedance</b>	50Ω		

\*Simulated off a groundplane and does not include cable attenuation

		Specification
<b>GPS/GNSS DATA</b>		
<b>Frequency Range</b>		1562-1612MHz
<b>Gain: LNA</b>		26dB
<b>Out of Band Rejection</b>		> 35dB
<b>Rejection at 787MHz</b>		> 50dB
<b>Typical Noise Figure</b>		-2.7dB
<b>Operating Voltage</b>		3-5V DC
<b>Typical Current</b>		17mA
<b>MECHANICAL DATA</b>		
<b>Dimensions</b>	Height	82mm (3.2")
	Length	253mm (9.96")
	Width	142mm (5.56")
<b>Operating Temp</b>		-40° / +80°C (-40° / +176°F)
<b>Colour</b>		Black/White
<b>Ingress Protection</b>		IP69K
<b>MOUNTING DATA</b>		
<b>Mounting Type</b>		Bolt Mount
<b>Mounting Hole</b>		19mm (3/4")
<b>EXTENSION CABLE DATA</b>		
<b>Cellular Cables</b>	Type	CS32 (UN ECE R 118 Compliant)
	Length	4m (13.12")
	Termination	FAKRA D (Purple)
<b>GPS Cable</b>	Type	CS29 (UN ECE R 118 Compliant)
	Length	4m (13.12")
	Termination	FAKRA C (Blue)
<b>ACCESSORIES</b>		
<b>In The Box</b>		Dual sharkfin antenna with pigtails, extension cables, foam pad, mounting bolt, centre sealing pad



**About Semtech**

Semtech Corporation (Nasdaq: SMTC) is a high-performance semiconductor, IoT systems and cloud connectivity service provider dedicated to delivering high-quality technology solutions that enable a smarter, more connected and sustainable planet. Our global teams are committed to empowering solution architects and application developers to develop breakthrough products for the infrastructure, industrial and consumer markets.

To learn more about Semtech technology, visit us at [Semtech.com](https://www.semtech.com) or follow us on [LinkedIn](#) or [X](#).

## X-ON Electronics

Largest Supplier of Electrical and Electronic Components

*Click to view similar products for [Antennas](#) category:*

*Click to view products by [Sierra](#) manufacturer:*

Other Similar products are found below :

[930-033-R](#) [108-00014-50](#) [66089-2406](#) [A09-F8NF-M](#) [A09-F5NF-M](#) [RGFRA1903041A1T](#) [W1049B090](#) [WTL2449CQ1-FRSMM](#) [CPL9C](#)  
[0600-00060](#) [PAL90209H-FNF](#) [GD53-25](#) [S9025PLSMF](#) [GPSCPMM00](#) [ANTDOM-05-01-WPM](#) [ANT-WP868SMA-Y](#) [CBNC58](#) [ABFT](#)  
[LP800NMOW](#) [NMOQ88C](#) [NMOQB](#) [NMOQC](#) [ANT-GSMGPSPUKS](#) [60210](#) [60140](#) [ANT-8WPIG-UFL](#) [ANT-GPSPUKS](#) [A21H0](#) [29000863](#)  
[29000848](#) [955179003](#) [RFANT2012090A0T](#) [RGFRA3216110A5T](#) [22100003](#) [DL-T022-2.4G](#) [DL-T023-4G](#) [T1-915M](#) [DL-T021-2.4GW](#) [DL-](#)  
[T021-2.4G](#) [KH-IPEX-1.13](#) [BWGNSCNX16-6B1Y2L120](#) [BWGNSCNX15-15B1Y4L120](#) [DL-T023-4GW](#) [DL-J020-433M](#) [J008-GSM](#)  
[3N0401LG-021](#) [KHA\(RG1.13\)-TX90B-IPEX](#) [KH-GPS181804-WY](#) [KHA\(RG1.13\)-TX80B-IPEX](#) [TX5800-JZ-5](#)