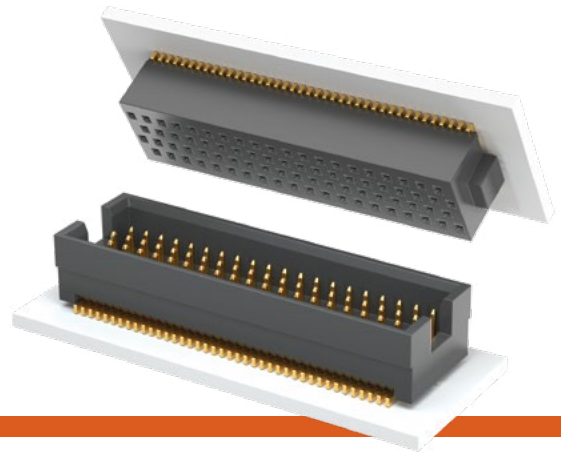


# QUAD ROW SMT TERMINAL & SOCKET

(1.27 mm) .050" PITCH • TOLC/SOLC SERIES



**TOLC**  
Mates:  
SOLC

**SOLC**  
Mates:  
TOLC

## SPECIFICATIONS

**Insulator Material:**  
Black Liquid Crystal Polymer  
**Contact Material:**  
Phosphor Bronze  
**Plating:**  
Au over 50 μ" (1.27 μm) Ni  
**Current Rating:**  
2.4 A per pin  
(6 adjacent pins powered)  
**Operating Temp Range:**  
-55 °C to +125 °C  
**Insertion Depth (SOLC):**  
(1.68 mm) .066" to  
(3.61 mm) .142" with  
(0.38 mm) .015" wipe  
**Normal Force (SOLC):**  
75 grams (0.74 N) average  
**Max Cycles (SOLC):**  
100+

## PROCESSING

**Lead-Free Solderable:**  
Yes  
**SMT Lead Coplanarity:**  
(0.10 mm) .004" max (05-35)  
(0.15 mm) .006" max (40-50)\*  
\*(.004" stencil solution  
may be available; contact  
IPG@samtec.com)

## ALSO AVAILABLE

MOQ Required

Other sizes  
Other platings

**Note:**  
Some lengths, styles and  
options are non-standard,  
non-returnable.

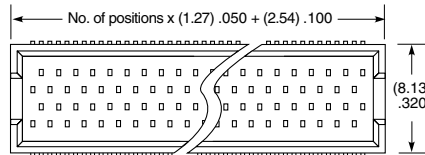
|             |          |                         |                   |                       |          |                     |
|-------------|----------|-------------------------|-------------------|-----------------------|----------|---------------------|
| <b>TOLC</b> | <b>1</b> | <b>NO. PINS PER ROW</b> | <b>LEAD STYLE</b> | <b>PLATING OPTION</b> | <b>Q</b> | <b>OTHER OPTION</b> |
|-------------|----------|-------------------------|-------------------|-----------------------|----------|---------------------|

05, 10, 15, 20, 25,  
30, 35, 40, 45, 50  
(Standard Sizes)

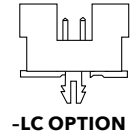
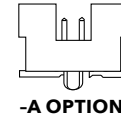
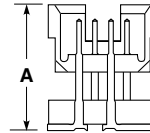
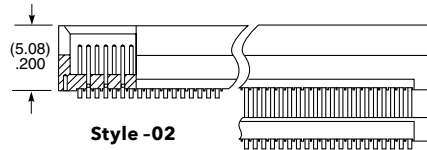
Specify  
LEAD  
STYLE  
from  
chart

**-F**  
= Gold flash  
on contact,  
Gold flash  
on tail  
**-L**  
= 10 μ"  
(0.25 μm)  
Gold on  
contact,  
Gold flash  
on tail

**-A**  
= Alignment Pin  
(N/A with -LC)  
**-LC**  
= Locking Clip  
(N/A with -A)  
(Manual  
placement required)  
**-K**  
= (9.00 mm) .354" DIA  
Polyimide film  
Pick & Place Pad



| LEAD STYLE | A            | MATED HEIGHT |
|------------|--------------|--------------|
| -02        | (5.59) .220  | (6.35) .250  |
| -12        | (7.24) .285  | (8.00) .315  |
| -22        | (9.25) .364  | (10.00) .394 |
| -32        | (11.23) .442 | (12.00) .472 |

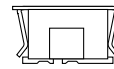
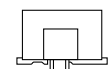
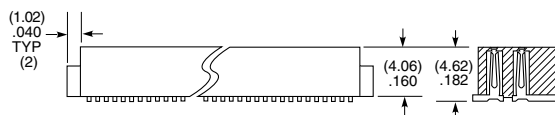
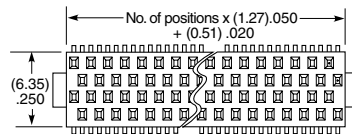


|             |          |                         |           |                       |          |                     |
|-------------|----------|-------------------------|-----------|-----------------------|----------|---------------------|
| <b>SOLC</b> | <b>1</b> | <b>NO. PINS PER ROW</b> | <b>02</b> | <b>PLATING OPTION</b> | <b>Q</b> | <b>OTHER OPTION</b> |
|-------------|----------|-------------------------|-----------|-----------------------|----------|---------------------|

05, 10, 15, 20, 25,  
30, 35, 40, 45, 50  
(Standard Sizes)

**-F**  
= Gold flash  
on contact,  
Gold flash  
on tail  
**-L**  
= 10 μ"  
(0.25 μm)  
Gold on contact,  
Gold flash  
on tail

**-A**  
= Alignment Pin  
(N/A with -LC)  
**-LC**  
= Locking Clip  
(N/A with -A)  
(Manual  
placement required)  
**-K**  
= (7.00 mm) .276" DIA  
Polyimide film  
Pick & Place Pad  
**-P**  
= Pick & Place Pad  
**-TR**  
= Tape & Reel  
**-FR**  
= Full Reel Tape & Reel  
(must order max.  
quantity per reel;  
contact Samtec for  
quantity breaks)



## X-ON Electronics

Largest Supplier of Electrical and Electronic Components

*Click to view similar products for [Board to Board & Mezzanine Connectors](#) category:*

*Click to view products by [Samtec](#) manufacturer:*

Other Similar products are found below :

[589158040000018](#) [FCN-268F036-G/BD](#) [FCN-268M012-G/0D](#) [MIS-048-01-F-D-DP-K](#) [832-10-034-10-001000](#) [93696-330](#) [FCN-235D050-G/C](#) [210-93-314-41-105000](#) [55323-1519](#) [0716612340](#) [101A10019X](#) [105061100000861+](#) [75140-7012](#) [87471-650](#) [1744382-4](#) [063209](#) [LST-110-07-T-D](#) [68685-603](#) [8-1616154-3](#) [IL-WX-10PB-HF-B-E1000E](#) [FCN-214J100-G/0](#) [P50-028-DDS-TG](#) [53309-2471](#) [1586617-1](#) [504248-1210](#) [NDS100-004-BF](#) [91922-31141LF](#) [505274-3440](#) [501493-2410](#) [504208-3410](#) [505006-0811](#) [505274-2040](#) [202436-1600](#) [202477-0414](#) [71607-302ALF](#) [71660-7580](#) [73420-5192](#) [ESMC-M-80-SGR-SMT-T/R](#) [AC01S050WA1R500](#) [IL-WX-20SB-VF-B-E1000E](#) [354949](#) [1104021](#) [BK13C06-32DP/2-0.35V\(865\)](#) [ACC-140-0722-00](#) [BK13C06-40DS/2-0.35V\(865\)](#) [3511216BMSS0BNA1](#) [BB51-84AT-1-3HB](#) [BA41-40CT-1-NHB](#) [BA41-80CT-0-NHB](#) [20-AH20S-16B00-001](#)