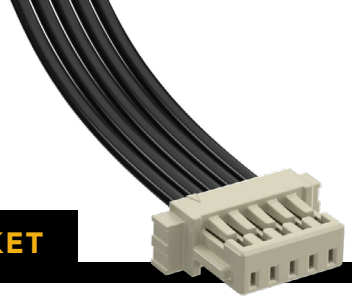


## (1.00 mm) .0394" PITCH • SINGLE ROW DISCRETE WIRE SOCKET



SERIES	PINS PER ROW	WIRE GAUGE	PLATING OPTION	ASSEMBLED LENGTH	OPTION
--------	--------------	------------	----------------	------------------	--------

<b>S1SS</b> = Single Row PVC Cable  <b>S1SST</b> = Single Row Blue *Teflon® Cable (28 AWG only)	<b>-02, -03, -05, -07, -10 -15, -20</b> (Standard sizes)	<b>-28</b> = 28 AWG  <b>-28C</b> = 28 AWG Color Coded Cable (S1SS only)  <b>-30</b> = 30 AWG  <b>-30C</b> = 30 AWG Color Coded Cable (S1SS only)	<b>-GF</b> = 3 μ" (0.07 μm) Gold on contact and tail	<b>-"XX.XX"</b> = Assembled Length in Inches (45.72 mm) 01.80" min.	(Required Callout)  <b>-L</b> = Single Ended With Latch  <b>-L1</b> = Double Ended Latch down, straight (Pin 1 to Pin 1)  <b>-L3</b> = Double Ended Latch up, straight (Pin 1 to Pin N)  <b>-S</b> = Single Ended No Latch  <b>-D-NUS</b> = Double Ended No Latch, "N" up, straight  <b>-D-NDS</b> = Double Ended No Latch, "N" down, straight
---	---	--	---	--	--

### S1SS(T)

Board Mates:

T1M

Cable Mates:

T1SS(T), T1PS(T)

### SPECIFICATIONS

#### Insulator Material:

Nylon, White (with latch)  
Black, LCP (without latch)

#### Contact Material:

Phosphor Bronze

#### Plating:

Au over 50 μ" (1.27 μm) Ni

#### Operating Temp Range (S1SS(T)/T1M):

-10 °C to +85 °C (PVC)

-40 °C to +125 °C (Teflon®)

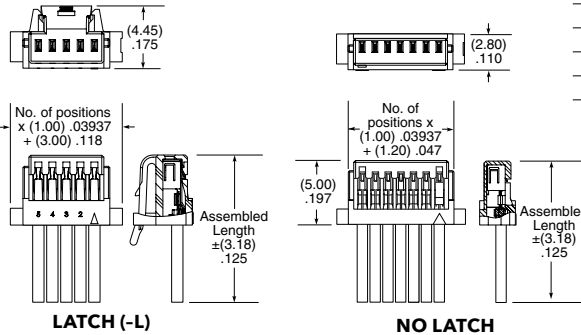
#### Current Rating (28 AWG):

2.7 A per pin (1 pin powered)

#### Voltage Rating:

250 VAC/353 VDC

Wire: 28 or 30 AWG



### S1SS CABLE COLOR CODING

PIN	COLOR
1	BROWN
2	RED
3	ORANGE
4	YELLOW
5	GREEN
6	BLUE
7	VIOLET
8	GRAY
9	WHITE
10	BLACK
ETC	REPEAT

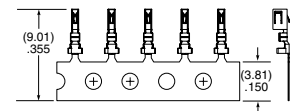
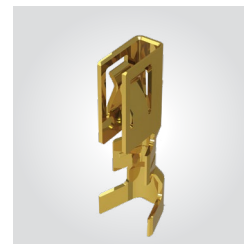
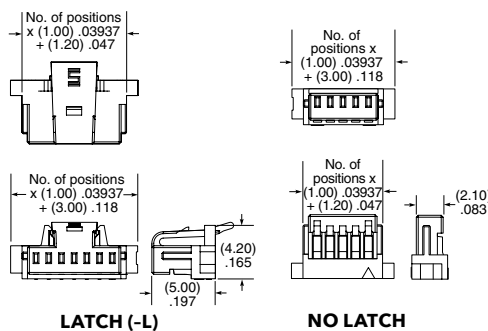
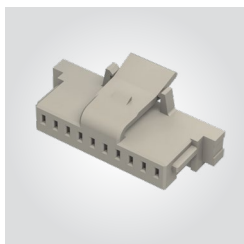
\*DuPont™ Teflon® is a registered trademark of the E.I. du Pont de Nemours and Company or its affiliates.

**Note:**  
Teflon® cable is intended for crimp only. Contact Samtec for solderable cable applications.

View complete specifications at: [samtec.com?S1SS](http://samtec.com?S1SS) & [samtec.com?S1SST](http://samtec.com?S1SST)

SERIES	NO. OF POSITIONS	LATCH	SERIES	01	PLATING
--------	------------------	-------	--------	----	---------

<b>ISS1</b> = Single Row Body	<b>-02, -03, -05, -07, -10, -15, -20</b>	(Leave blank for no latch)  <b>-L</b> = Positive Latch	<b>CC09R</b> = Contact, Full Reel (25,000 Parts per Reel)	<b>01</b>	<b>-GF</b> = 3 μ" (0.07 μm) Gold contact and tail
----------------------------------	--	---	--	-----------	--



### TOOLING

Hand Tool: CAT-HT-309-2830-12

Clamp for mounting hand tool: CAT-HT-MNT-01

Mini Applicator: CAT-MC-309-2830-XX-01

#### Note:

Some lengths, styles and options are non-standard, non-returnable.

View complete specifications at: [samtec.com?ISS1](http://samtec.com?ISS1), [samtec.com?CC09R](http://samtec.com?CC09R) & [samtec.com?CC09M](http://samtec.com?CC09M)

## X-ON Electronics

Largest Supplier of Electrical and Electronic Components

*Click to view similar products for [Rectangular Cable Assemblies](#) category:*

*Click to view products by [Samtec](#) manufacturer:*

Other Similar products are found below :

[MC320E-N-23](#) [A08KR08KR26E203B](#) [G125FC10668L0-0300L](#) [G125FC10668L0-0150L](#) [G125-FC11068L0-0150L](#) [G125-FC11068L0-0300L](#)  
[A06XAF06XAF22K254B](#) [A10XAF10XAF22K152B](#) [A13KR13KR26E254B](#) [A12SUR12SUR32W203A](#) [A16KR16KR26E203B](#)  
[A12KR12KR26E305A](#) [A12KR12KR26E305B](#) [A12ZR12ZR28H203B](#) [A12ZR12ZR28H203A](#) [A10SR10SR30K254A](#) [A09SR09SR30K305A](#)  
[A14KR14KR26E254A](#) [A14KR14KR26E254B](#) [A10ZR10ZR28H254A](#) [A09ZR09ZR28H305A](#) [A09ZR09ZR28H305B](#) [A13ZR13ZR28H203A](#)  
[A15KR15KR26E254A](#) [A13KR13KR26E305B](#) [A11ZR11ZR28H254A](#) [A11ZR11ZR28H254B](#) [A11SR11SR30K254A](#)  
[A12SUR12SUR32W254A](#) [A10ZR10ZR28H305A](#) [A14KR14KR26E305B](#) [A10ZR10ZR28H305B](#) [A12ZR12ZR28H254A](#)  
[A15KR15KR26E305A](#) [A15KR15KR26E305B](#) [A11SR11SR30K305A](#) [A11ZR11ZR28H305A](#) [A11ZR11ZR28H305B](#) [A13ZR13ZR28H254A](#)  
[A12SUR12SUR32W305A](#) [A12ZR12ZR28H305A](#) [A12ZR12ZR28H305B](#) [A20XAF20XAF22K51B](#) [A13ZR13ZR28H305A](#)  
[A20XAF20XAF22K102B](#) [A20XAF20XAF22K152B](#) [A20XAF20XAF22K203B](#) [A20XAF20XAF22K254B](#) [A20XAF20XAF22K305B](#)  
[A16XSR16XSR36R254B](#)