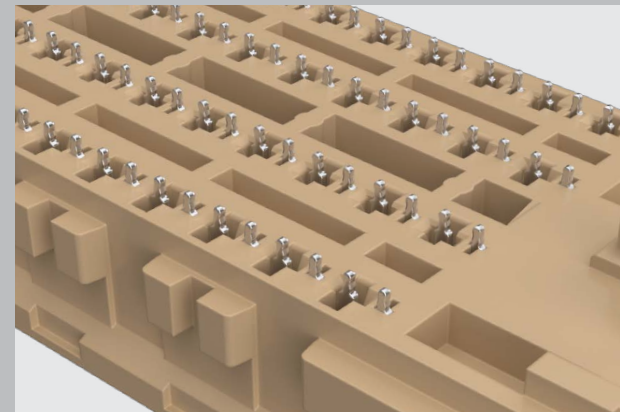
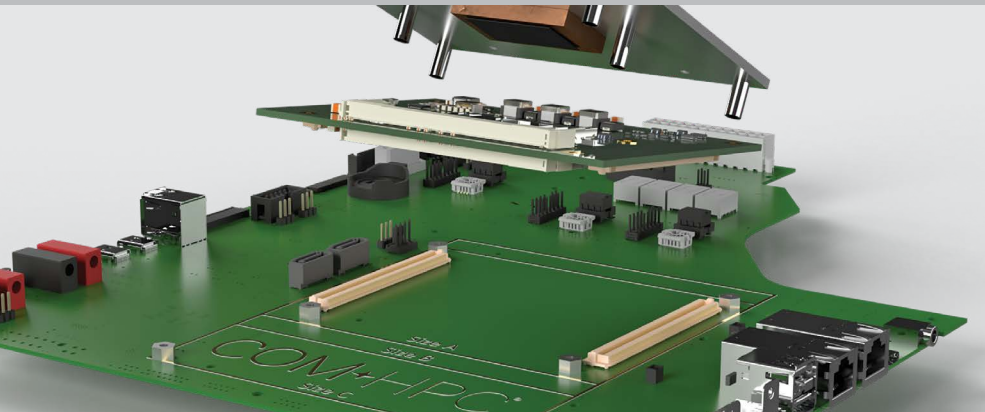
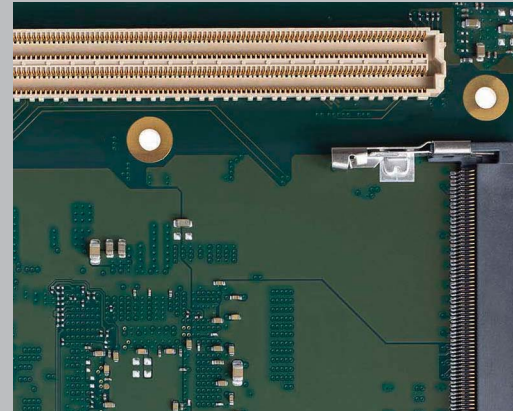
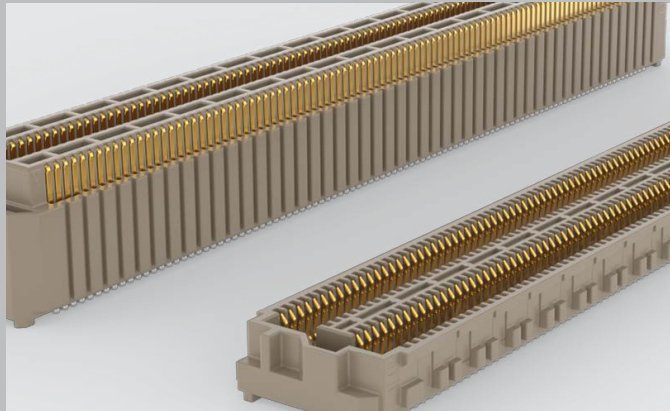
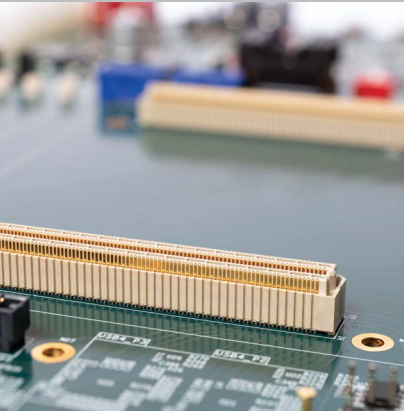




HIGH-PERFORMANCE COM-HPC® CONNECTORS



OPEN STANDARD FOR EMBEDDED COMPUTING MODULES

COM★HPC®

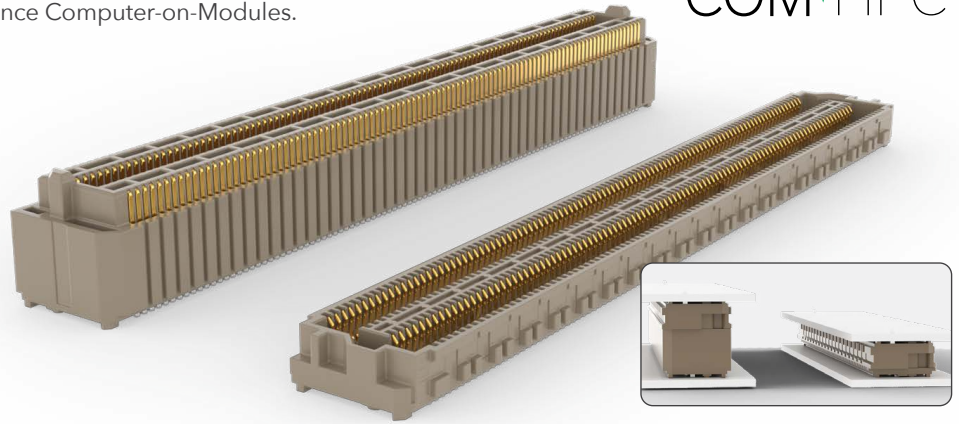
COM-HPC® INTERCONNECT SOLUTIONS

Samtec's 0.635 mm pitch, high-speed, high-density interconnect system meets the COM-HPC® specification for high-performance Computer-on-Modules.

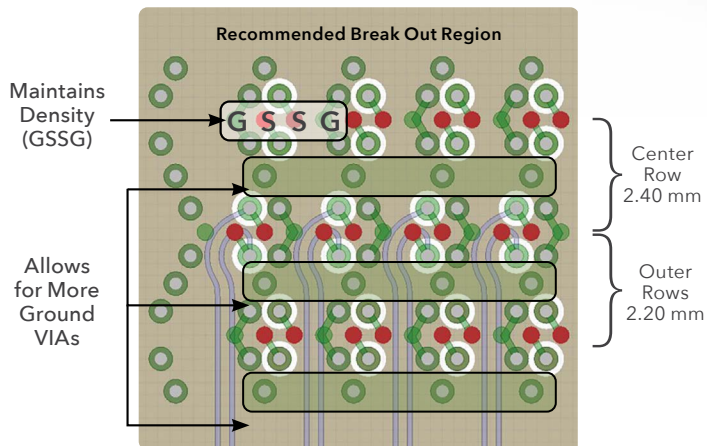
COM+HPC®

HIGH-SPEED PERFORMANCE

- Up to 64 Gbps PAM4 per channel
- PCIe® 6.0 capable
- 100 Gb (4 x 25 Gb) Ethernet capable
- 40 Gbps USB4/Thunderbolt capable
- 80 Gbps DisplayPort™ signals capable
- Up to 358 W at 11.4 - 12.6 Volts



5 mm & 10 mm Stack Heights



HIGH-DENSITY DESIGN

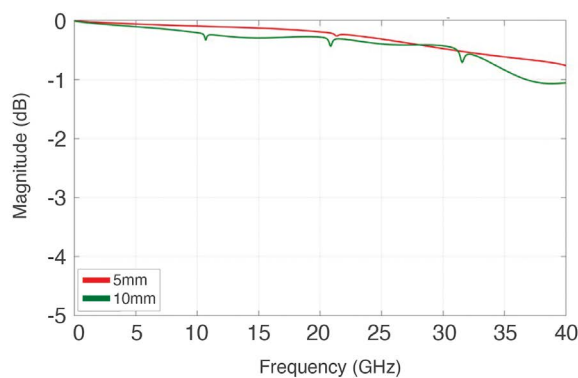
- High pin count system: 400 total pins (4 x 100)
- 0.635 mm pitch
- Overall dimensions: 68.62 mm x 9 mm x stack height
- Increased row-to-row spacing for reduced crosstalk, easier routing
 - Row 1 to Row 2: 2.20 mm
 - Row 2 to Row 3: 2.40 mm
 - Row 3 to Row 4: 2.20 mm

NEW FEATURES

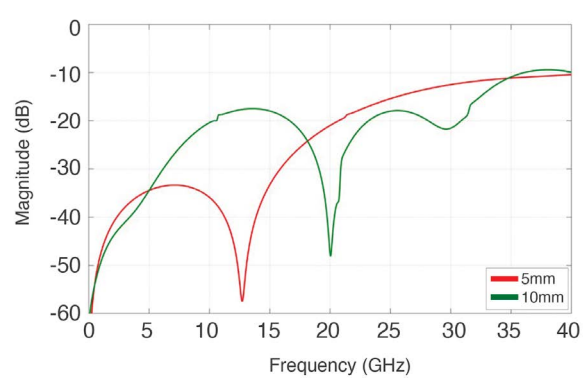
- Contacts without solder balls improve alignment and signal integrity while reducing crosstalk at high speeds
- Weld tabs increase mechanical strength of the connector to the board
- Alignment pins for secure mating



Connector-Only Insertion Loss (IL)



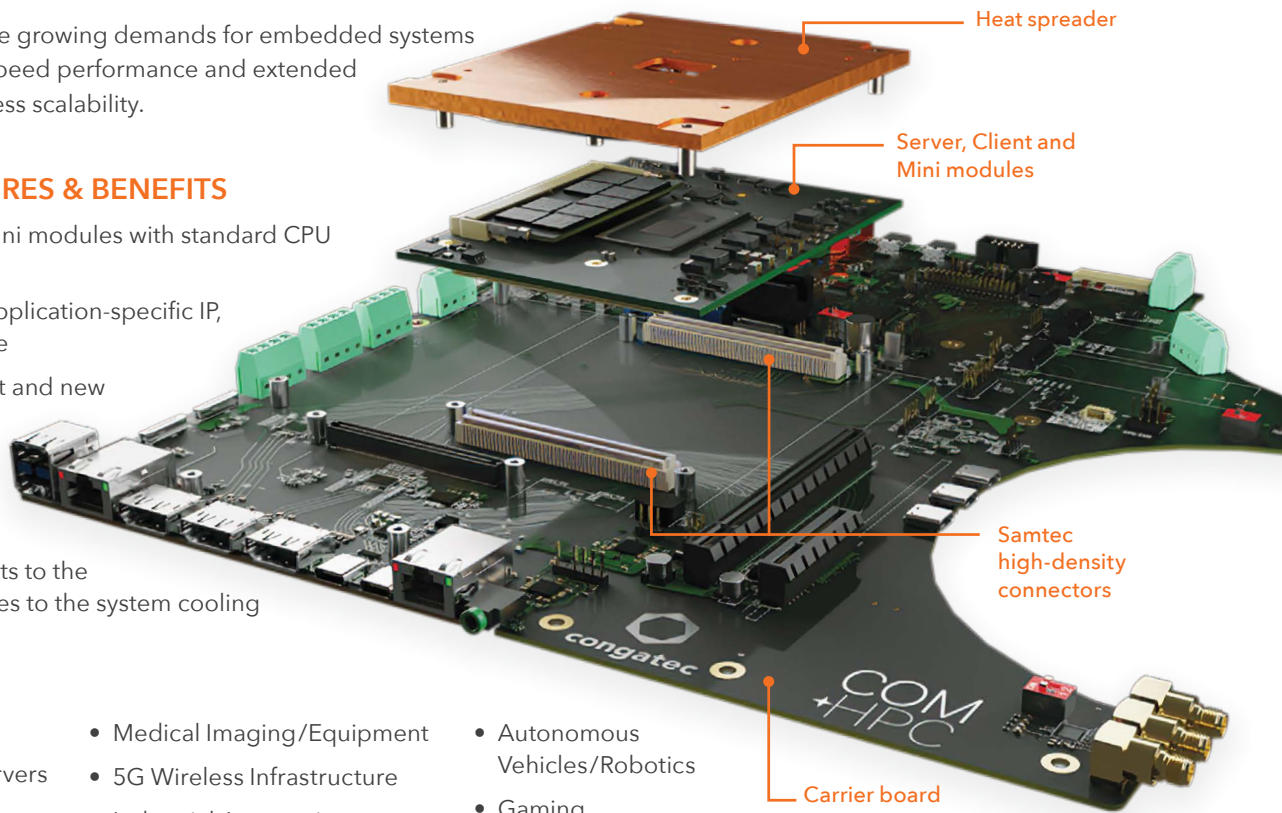
Connector-Only Return Loss (RL)



COM-HPC® exceeds the growing demands for embedded systems to provide ultra-high-speed performance and extended connectivity with limitless scalability.

COM-HPC® FEATURES & BENEFITS

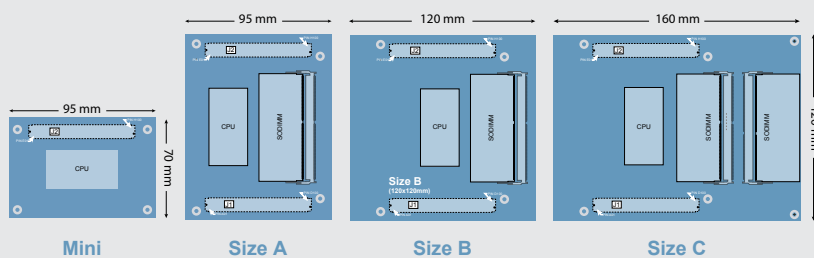
- Server, Client and Mini modules with standard CPU core functions
- Carrier board with application-specific IP, functionality, and size
- Faster time to market and new technologies
- Reduced inventory and development costs
- Heat spreader mounts to the module and interfaces to the system cooling



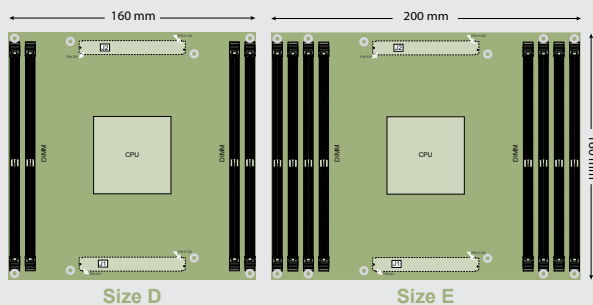
APPLICATIONS

- Datacom & Telecom
- Embedded Edge Servers
- Instrumentation
- Military/Aerospace
- Medical Imaging/Equipment
- 5G Wireless Infrastructure
- Industrial Automation
- Autonomous Vehicles/Robotics
- Gaming

Standard Client Module Sizes



Standard Server Module Sizes



COM-HPC® MODULES

The base COM-HPC® specification defines two pinout types: **COM-HPC® Server** and **COM-HPC® Client**.

COM-HPC® Mini, a more compact Client form factor, was also introduced to support small form factor applications.

- COM-HPC® Server Modules are targeted for edge server applications
- COM-HPC® Client Modules support robust embedded computing
- COM-HPC® Mini offers a compact footprint, along with fewer power and cost constraints



COM
HPC®

Module photography courtesy of congatec GmbH.

COM-HPC[®] PRODUCT SOLUTIONS

Samtec Part Number	Connectors			Options		
	Module Receptacle	Carrier Plug	Stack Height	Termination	Weld Tabs	Plating*
ASP-230332-03	✓			Column	✓	-L
ASP-230333-03		✓	5 mm	Column	✓	-L
ASP-230336-03		✓	10 mm	Column	✓	-L
ASP-230332-04	✓			Column	✓	-S
ASP-230333-04		✓	5 mm	Column	✓	-S
ASP-230336-04		✓	10 mm	Column	✓	-S
ASP-230332-01	✓			Ball	✓	-L
ASP-230333-01		✓	5 mm	Ball	✓	-L
ASP-230336-01		✓	10 mm	Ball	✓	-L
ASP-230332-02	✓			Ball	✓	-S
ASP-230333-02		✓	5 mm	Ball	✓	-S
ASP-230336-02		✓	10 mm	Ball	✓	-S
ASP-209946-01	✓			Ball		-L
ASP-214802-01		✓	5 mm	Ball		-L
ASP-209948-01		✓	10 mm	Ball		-L
ASP-209946-02	✓			Ball		-S
ASP-214802-02		✓	5 mm	Ball		-S
ASP-209948-02		✓	10 mm	Ball		-S

* -L = 10μ" Gold
 -S = 30μ" Gold



For more information, please visit samtec.com/COMHPC or email COMHPC@samtec.com.

X-ON Electronics

Largest Supplier of Electrical and Electronic Components

Click to view similar products for [Board to Board & Mezzanine Connectors](#) category:

Click to view products by [Samtec](#) manufacturer:

Other Similar products are found below :

[589158040000018](#) [MDF7-26D-2.54DSA\(55\)](#) [MDF7B-3P-2.54DSA\(55\)](#) [MDF7C-11P-2.54DSA\(55\)](#) [MDF7C-18P-2.54DSA\(55\)](#) [MDF7C-5P-2.54DSA\(01\)](#) [FCN-268F036-G/BD](#) [FCN-268M012-G/0D](#) [MIS-048-01-F-D-DP-K](#) [832-10-034-10-001000](#) [93696-330](#) [FCN-235D050-G/C](#) [210-93-314-41-105000](#) [MDF7-16P-2.54DS\(56\)](#) [MDF7-40DP-2.54DSA\(55\)](#) [55323-1519](#) [069159702701000](#) [0716612340](#) [105061100000861+](#) [75140-7012](#) [87471-650](#) [1744382-4](#) [063209](#) [LST-110-07-T-D](#) [68685-603](#) [8-1616154-3](#) [541371078](#) [IL-WX-10PB-HF-B-E1000E](#) [FCN-214J100-G/0](#) [P50-028-DDS-TG](#) [53309-2471](#) [1586617-1](#) [504248-1210](#) [504248-2010](#) [9159005551906](#) [NDS100-004-BF](#) [91922-31141LF](#) [505274-3440](#) [501493-2410](#) [504208-3410](#) [505006-0811](#) [505274-2040](#) [202436-1600](#) [202477-0414](#) [71607-302ALF](#) [71660-7580](#) [73420-5192](#) [360-10-107-00-001000](#) [ESMC-M-80-SGR-SMT-T/R](#) [AC01S050WA1R500](#)