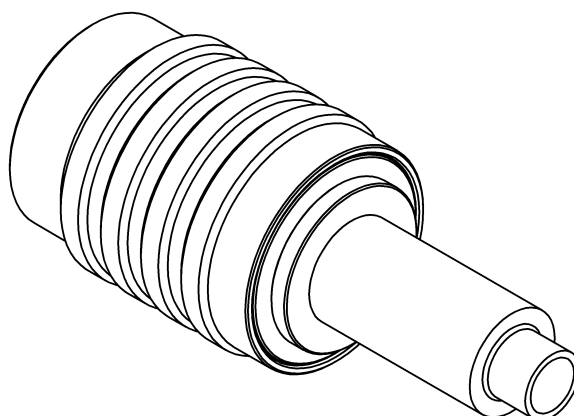
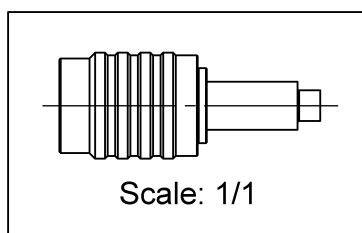
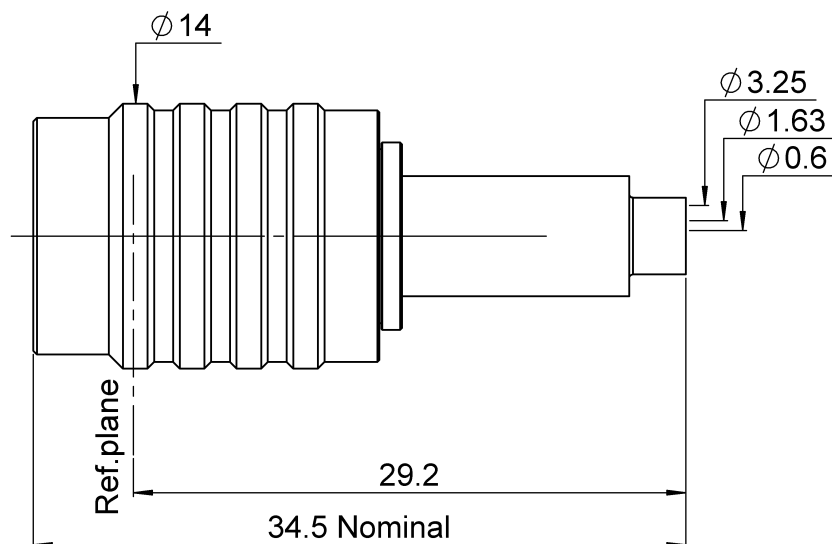


PAGE 1/2

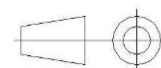
ISSUE 21-02-18A

SERIES NEX10

PART NUMBER R180080016



All dimensions are in mm. Tolerances according ISO 2768 m-H



| COMPONENTS | MATERIALS | PLATING (μm) |
|----------------|------------------------|--------------|
| Body | BRASS. | HEP2R |
| Center contact | BRASS. | SILVER |
| Outer contact | BERYLLIUM COPPER | SILVER |
| Insulator | PTFE | |
| Gasket | SILICONE RUBBER | |
| Others parts | STAINLESS STEEL, BRASS | HEP2R, BBR |
| - | - | - |
| - | - | - |

PAGE **2/2**

ISSUE **21-02-18A**

SERIES **NEX10**

PART NUMBER **R180080016**

PACKAGING

| Standard | Unit | Other |
|-----------|-------------------|-------------------|
| 50 | Contact us | Contact us |

ELECTRICAL CHARACTERISTICS

| | | |
|---------------------------------|----------------------|--------------------------|
| Impedance | 50 | Ω |
| Frequency | 0-20 | GHz |
| VSWR | 1.35 + 0.0000 | x F(GHz) Maxi |
| Insertion loss | 0.05 | \sqrt{F} (GHz) dB Maxi |
| RF leakage | NA | - F(GHz)) dB Maxi |
| Voltage rating | 500 | Veff Maxi |
| Dielectric withstanding voltage | 1500 | Veff mini |
| Insulation resistance | 5000 | M Ω mini |

MECHANICAL CHARACTERISTICS

| | | |
|----------------------------|----------------|-------------|
| Center contact retention | | |
| Axial force – Mating End | NA | N mini |
| Axial force – Opposite end | NA | N mini |
| Torque | NA | N.cm mini |
| Recommended torque | | |
| Mating | NA | N.cm |
| Panel nut | NA | N.cm |
| Clamp nut | NA | N.cm |
| A/F clamp nut | 0.0000 | mm |
| Mating life | 100 | Cycles mini |
| Weight | 14.5360 | g |

ENVIRONMENTAL

| | | |
|-----------------------|-----------------|-----------|
| Operating temperature | -55/+125 | °C |
| Hermetic seal | NA | Atm.cm3/s |
| Panel leakage | NA | |

SPECIFICATION

CABLE ASSEMBLY

| Stripping | a | b | c | d | e | f |
|-----------|------------|----------|-------------|----------|------------|----------|
| mm | 3.2 | 8 | 12.7 | 0 | 9.5 | 0 |

Assembly instruction: **Crimp 03**

Recommended cable(s)

K02252D
RD316

Characteristics indicated on this data sheet are those that can be achieved with the highest performance cable. Intrinsic limitations of the cable may diminish the performance of the assembly

Cable retention

| | | |
|------------|-----------|--------|
| - pull off | 40 | N mini |
| - torque | NA | N.cm |

TOOLING

| Part Number | Description | Hexagon |
|-------------|---------------------------|---------|
| R282223000 | CRIMPING TOOL | |
| R282235011 | CRIMPING DIES M22520/5-11 | |
| R282293000 | CRIMPING TOOL M22520/5-01 | |

OTHER CHARACTERISTICS

CUSTOMER'S APPROVAL

Department or company's stamp

Name :

Date :

Copy to send back to
RADIALL S.A. BEFORE :

X-ON Electronics

Largest Supplier of Electrical and Electronic Components

Click to view similar products for [RF Connectors](#) / [Coaxial Connectors](#) *category:*

Click to view products by [Radiall](#) *manufacturer:*

Other Similar products are found below :

[8915-1511-000](#) [89674-0827](#) [6001-7071-019](#) [6002-7051-003](#) [6002-7551-202](#) [6059674-1](#) [619550-1](#) [630059-000](#) [M39030/3-01N](#) [6500-7071-046](#) [6769](#) [CX050L2AQ](#) [7002-1541-010](#) [7002-1542-011](#) [7004-1512-000](#) [7009-1511-004](#) [7010-1511-000](#) [7029-1511-060](#) [7101-1541-010](#) [7101-1571-002](#) [7145-1521-002](#) [7203-1571-003](#) [7209-1511-011](#) [7210-1511-015](#) [7210-1511-019](#) [73137-5015](#) [73216-2241](#) [73404-2300](#) [7405-1521-005](#) [7405-1521-802](#) [8527](#) [8547](#) [FS11V](#) [877931](#) [8808-1511-001](#) [9074-9513-000](#) [9101-9573-002](#) [910A205F](#) [9130-9573-002](#) [PL11SC-026](#) [PL375-33](#) [PL40-5](#) [PL74C-221](#) [PL75MC-217](#) [PL803-7](#) [1200690078](#) [1-201144-1](#) [R107003010W](#) [R110A172100](#) [R112186000](#)