

Description: 1608 Low Pass Filter
PART NUMBER: LPF1608LKRKR0709L
Features:

- Compact size
- RoHS compliant

Applications:

- GSM / WCDMA / LTE



Net weigh/pcs (g): 0.0038

ELECTRICAL SPECIFICATIONS

| Item | Frequency Range (MHz) | Min. | Typ. | Max. |
|---------------------|-----------------------|------|------|------|
| Insertion Loss (dB) | 617~960 | - | 0.22 | 0.3 |
| Return Loss (dB) | 617~960 | 10 | 22.5 | - |
| Attenuation (dB) | 1738~1920 | 25 | 28.2 | - |
| | 2400~2500 | 25 | 42.3 | - |
| | 2600~2980 | 25 | 39.3 | - |

Operating Temperature Range : -40~85°C

Power Capacity : 3W max.

In the effort to improve our products, we reserve the right to make changes judged to be necessary.

CONFIDENTIAL AND PROPRIETARY INFORMATION

This document contains confidential and proprietary information of Pulse Electronics, Inc. (Pulse) and is protected by copyright, trade secret and other state and federal laws. Its receipt or possession does not convey any rights to reproduce, disclose its contents, or to manufacture, use or sell anything it may describe. Reproduction, disclosure or use without specific written authorization of Pulse is strictly forbidden.

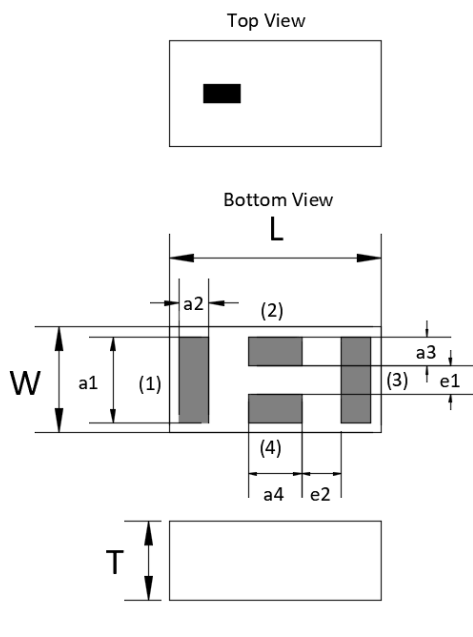
For more information:


 Pulse Worldwide Headquarters
 15255 Innovation Drive #100
 San Diego, CA 92128
 USA
 Tel: 1-858-674-8100

 Pulse/Larsen Antennas
 18110 SE 34th St Bldg 2 Suite 250
 Vancouver, WA 98683
 USA
 Tel: 1-360-944-7551

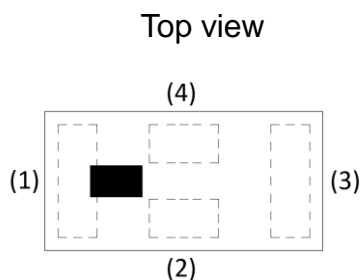
 Europe Headquarters
 Pulse GmbH & Do, KG
 Zeppelinstrasse 15
 Herrenberg, Germany
 Tel: 49 7032 7806 0

 Pulse (Suzhou) Wireless Products Co, Inc.
 99 Huo Ju Road(#29 Bldg, 4th Phase
 Suzhou New District
 Jiangsu Province, Suzhou 215009 PR China
 Tel: 86 512 6807 9998

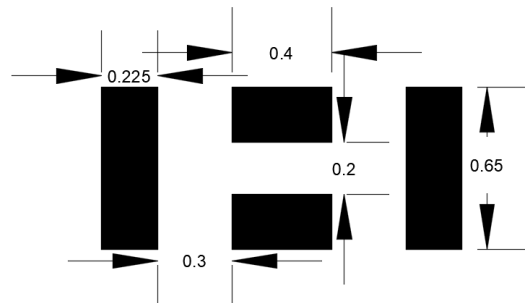
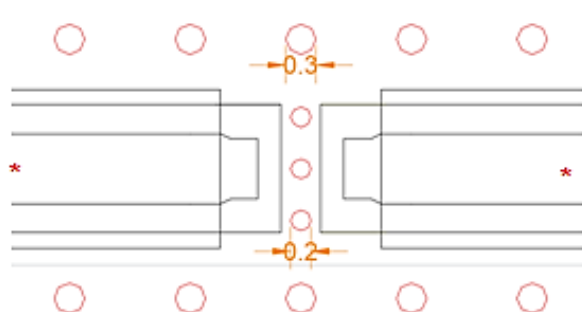
Description: 1608 Low Pass Filter
PART NUMBER: LPF1608LKRKR0709L
MECHANICAL DIMENSION
Outline

Dimension

| L | W | T | a1 |
|------------|-----------|-----------|-----------|
| 1.60±0.10 | 0.80±0.10 | 0.60±0.10 | 0.65±0.10 |
| a2 | a3 | a4 | e1 |
| 0.225±0.05 | 0.22±0.05 | 0.40±0.05 | 0.21±0.05 |
| e2 | | | |
| 0.30±0.05 | | | |

NOTE : Dimensions in mm.

Termination

Terminal name
Function

| | |
|---|----------------|
| 1 | Input / Output |
| 2 | GND |
| 3 | Output / Input |
| 4 | GND |

Reference design of EVB


Unit : mm

Line width should be designed to match 50Ω characteristic impedance, depending on PCB material and thickness.

In the effort to improve our products, we reserve the right to make changes judged to be necessary.

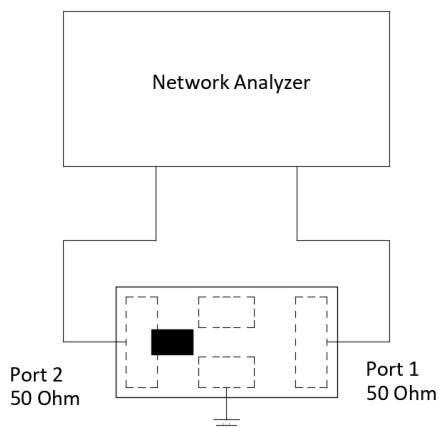
CONFIDENTIAL AND PROPRIETARY INFORMATION

This document contains confidential and proprietary information of Pulse Electronics, Inc. (Pulse) and is protected by copyright, trade secret and other state and federal laws. Its receipt or possession does not convey any rights to reproduce, disclose its contents, or to manufacture, use or sell anything it may describe. Reproduction, disclosure or use without specific written authorization of Pulse is strictly forbidden.

Description: 1608 Low Pass Filter

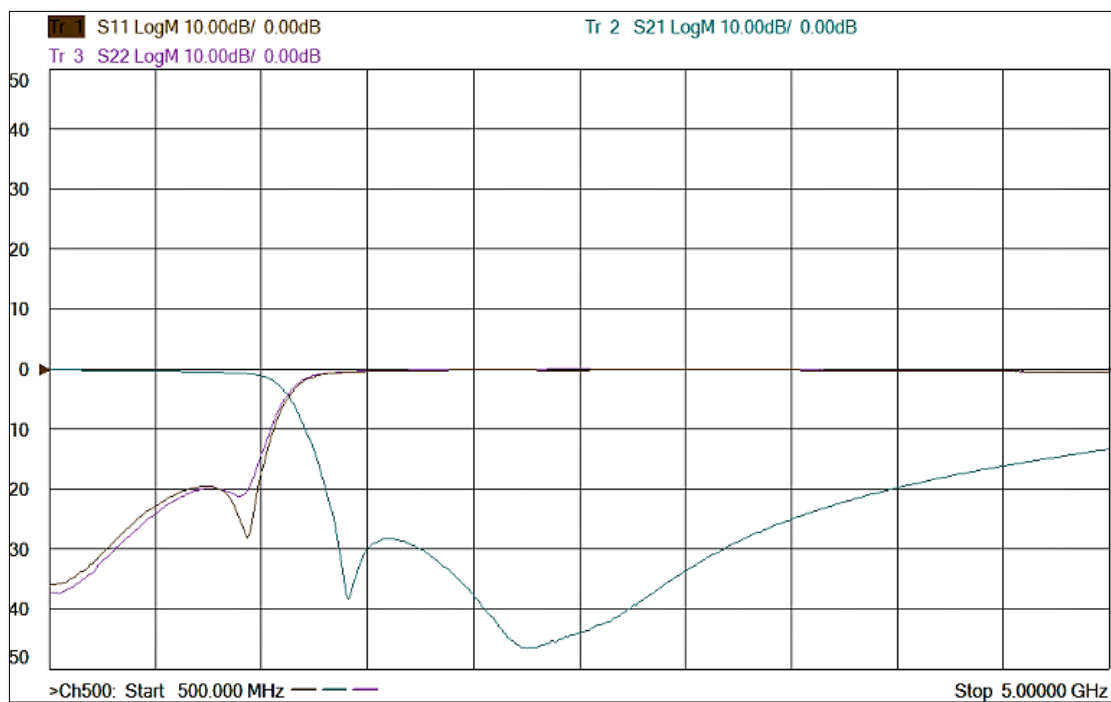
PART NUMBER: LPF1608LKRKR0709L

MEASURING DIAGRAM



Test Instrument :
Agilent E5071C Network Analyzer or equivalent.

ELECTRICAL PERFORMANCES



In the effort to improve our products, we reserve the right to make changes judged to be necessary.

CONFIDENTIAL AND PROPRIETARY INFORMATION

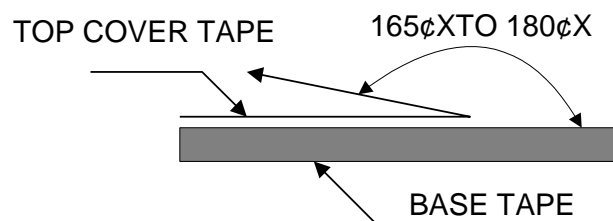
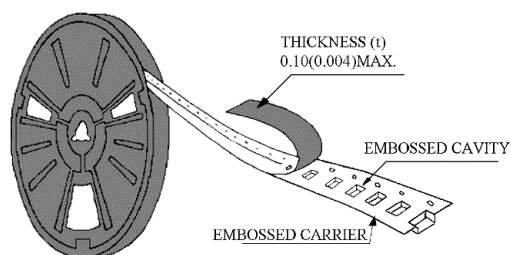
This document contains confidential and proprietary information of Pulse Electronics, Inc. (Pulse) and is protected by copyright, trade secret and other state and federal laws. Its receipt or possession does not convey any rights to reproduce, disclose its contents, or to manufacture, use or sell anything it may describe. Reproduction, disclosure or use without specific written authorization of Pulse is strictly forbidden.

Description: 1608 Low Pass Filter

PART NUMBER: LPF1608LKRKR0709L

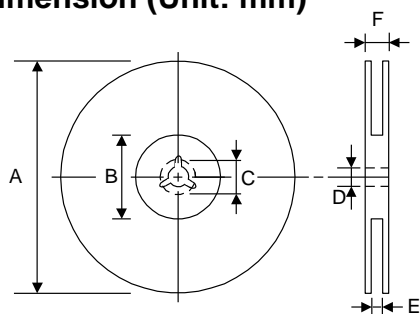
PACKING SPECIFICATION

Peel-off force



The force for peeling of cover tape is 10 grams in the arrow direction.

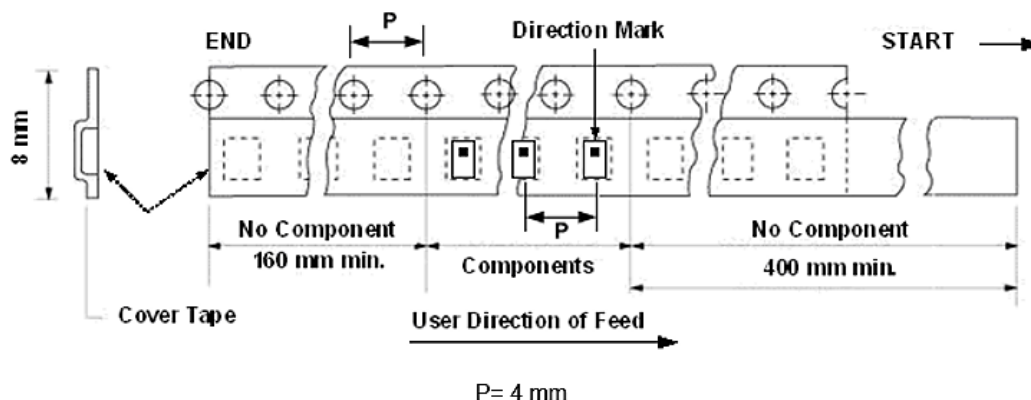
Dimension (Unit: mm)



| TYPE | A | B | C | D | E | F |
|-------|---------|--------------|----------|----------|----------|--------|
| 8 mm | 178±1 | 60+0.5 -0 | - | 13±0.2 | 9±0.5 | 12±0.5 |
| 12 mm | 178±0.3 | 60±0.2 | 19.3±0.1 | 13.5±0.1 | 13.6±0.1 | - |

Taping quantity

| SERIES | 5824 5724 | 5320 5220 | 4532 | 4516 | 3225 | 3216 2520 | 2012 1608 | 1005 0605 |
|----------|--------------|--------------|------|------|------|--------------|--------------|--------------|
| PCS/Reel | 5000 | 3000 | 1000 | 2000 | 2500 | 3000 | 4000 | 10000 |



In the effort to improve our products, we reserve the right to make changes judged to be necessary.

CONFIDENTIAL AND PROPRIETARY INFORMATION

This document contains confidential and proprietary information of Pulse Electronics, Inc. (Pulse) and is protected by copyright, trade secret and other state and federal laws. Its receipt or possession does not convey any rights to reproduce, disclose its contents, or to manufacture, use or sell anything it may describe. Reproduction, disclosure or use without specific written authorization of Pulse is strictly forbidden.

Description: 1608 Low Pass Filter**PART NUMBER:** LPF1608LKRKR0709L**REVISION HISTORY**

| Revision | Date | Description |
|-----------|---------------|-------------|
| Version 1 | Feb. 23, 2023 | - New issue |

X-ON Electronics

Largest Supplier of Electrical and Electronic Components

Click to view similar products for [Signal Conditioning](#) category:

Click to view products by [Pulse](#) manufacturer:

Other Similar products are found below :

[PD0409J5050S2HF](#) [AFS14A35-1591.50-T3](#) [AFS20A20-1227.60-T3](#) [JP510S](#) [LFB322G45SN1A504](#) [SF2159E](#) [FM-104-PIN](#) [CER0813B](#)
[MAPDCC0005](#) [3A325](#) [BD0810N50100AHF](#) [DC0710J5005AHF](#) [DC2327J5005AHF](#) [X3C19F1-20S](#) [XC3500P-20S](#) [CDBLB455KCAX39-B0](#)
[PD0922J5050D2HF](#) [600S150FTRB](#) [1E1305-3](#) [1F1304-3S](#) [BD1222J50200AHF](#) [BD1722J50100AHF](#) [2450DP39K5400E](#) [BD0810J50150AHF](#)
[BD1722J50200AHF](#) [DS-329-PIN](#) [TP-104-PIN](#) [TP-101-PIN](#) [HH-128-PIN](#) [T-1000-N](#) [JP506S](#) [XC0900P-10S](#) [XC0900B-30S](#) [11305-10](#) [5962-](#)
[9091202MXA](#) [X3C06A4-03S](#) [DSS-333-PIN](#) [PD2425J5050S2HF](#) [B39242B4360P810](#) [B39781B8005P810](#) [B39881B8013P810](#)
[B39791B8039P810](#) [B39771B8035P810](#) [B39741B8012P810](#) [B39212B8033P810](#) [B39162B8636P810](#) [SF2225E](#) [SF2275E](#) [SF2395E](#) [SF2188D](#)