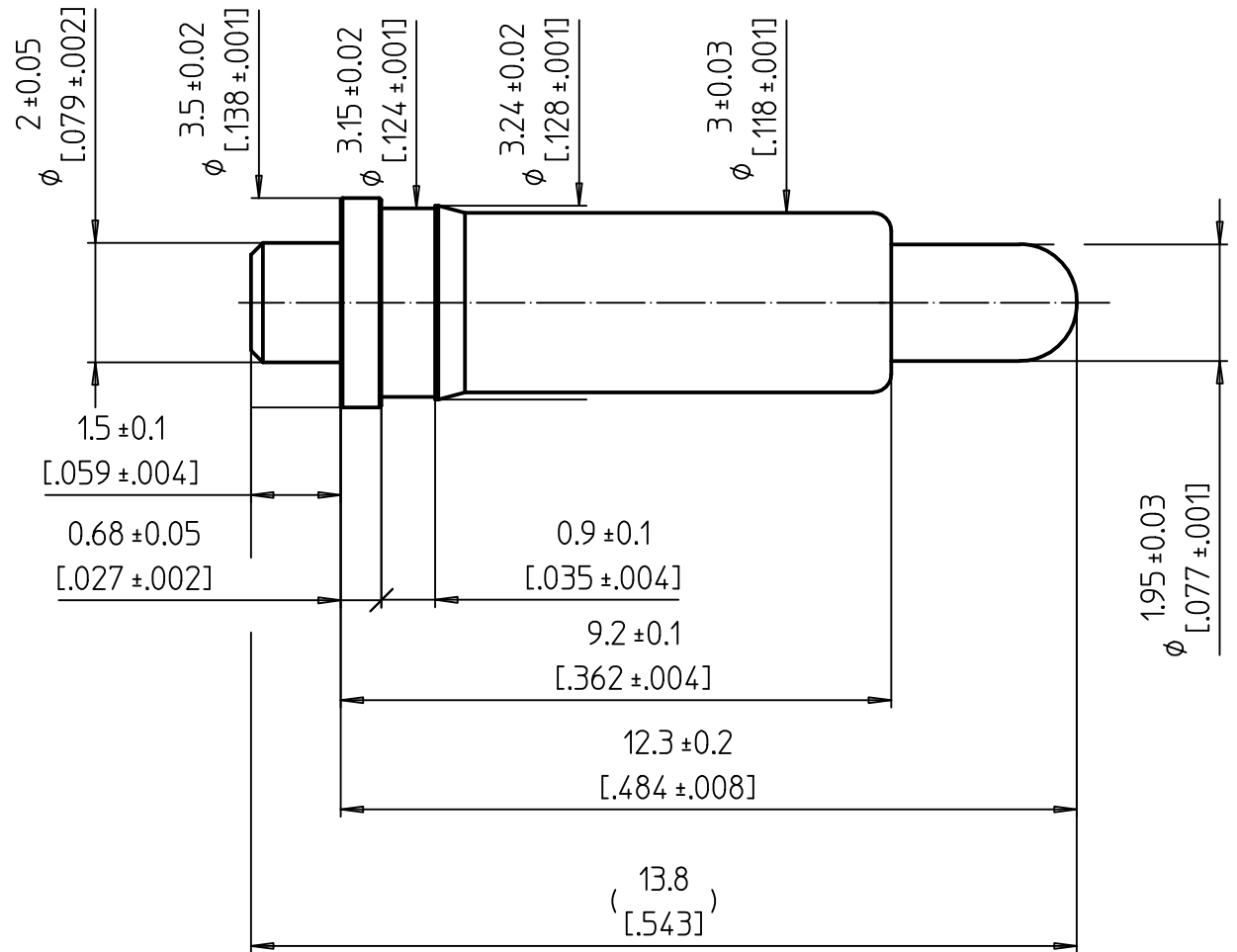
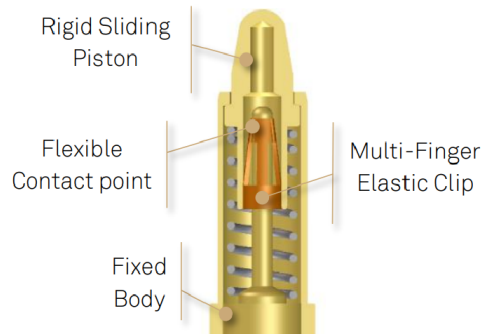


Spring Loaded Contacts
With PRECI-DIP Integrated CLIP



NOTES:

MECHANICAL REQUIREMENTS:

Durability: 20'000 cycles at Hnom
Working stroke between H1 and H2 : 2.15 mm [.084']
Spring forces (F):
Finit= 2.1 N *
F1= 2.25 N at H1= 12.10 mm [.476']
Fnom= 2.88±0.65 N at Hnom= 11.30 mm [.444']
F2= 3.91 N at H2= 9.95 mm [.391']

ELECTRICAL REQUIREMENTS:

Contact resistance:
R= 30 mOhms max in static mode at Hnom
Current per individual contact in free air at ambient temperature:
ICont= 12 A at Hnom with temperature raise max 30°C

ENVIRONMENTAL REQUIREMENTS:

Operating temperature: -40 °C / +125 °C

MATERIALS / PLATINGS:

Contact interfaces plated with 0.4 µm [20µ'] gold over Nickel
Spring: Stainless steel
Clip : Beryllium Copper

SOLDERING :

Recommended PCB pad size : 3.7 mm [.145']
Recommended Mounting Hole 2.2 mm [.086']
Solderability J-STD-002A. Test A 245°C, 5s, solder alloy SnAg3.8Cu0.7
Resistance to soldering heat J-STD-020C, 260°C, 20S

INSULATOR :

If assembling pin into moulding :
Recommended hole size : Ø3.2 mm [.126']

High Reliability
Spring Loaded Contact



Remplace:

Remplacé par:

10:1

Dessiné

16.12.2022

C.Bidault

Contrôlé

N° dessin

Révision

90738-AS

X-ON Electronics

Largest Supplier of Electrical and Electronic Components

Click to view similar products for [Headers & Wire Housings](#) category:

Click to view products by [Precidip](#) manufacturer:

Other Similar products are found below :

[892-18-020-10-001101](#) [0010894062](#) [0010977306](#) [0015477636](#) [0015917161](#) [0022104068](#) [0022121042](#) [0022155065](#) [0022281023](#) [57102-F02-18ULF](#) [58102-G61-06LF](#) [582553-1](#) [0015911208](#) [01.001.5753.1](#) [0022285048](#) [0050291907](#) [02.125.8002.8](#) [CSU011177004](#) [622-0430](#) [622-3653LF](#) [63453-116](#) [636-1030](#) [636-1427](#) [636-3427](#) [636-4007](#) [641938-9](#) [65495-038](#) [65692-001LF](#) [65781-018](#) [65781-047](#) [65817-010LF](#) [65817-015LF](#) [67095-007LF](#) [67601157](#) [68631-112](#) [68645-018](#) [699319-000](#) [70.362.1628.0](#) [70-4210](#) [70-4226B](#) [70-4853B](#) [707-5028](#) [71.350.2428.0](#) [733-134](#) [733-162](#) [760-3052](#) [MHR-64-VUAL](#) [80.063.4001.1](#) [800-90-001-10-001000](#) [801-43-002-10-013000](#)