

# SEALED DOME ILLUMINATED PUSHBUTTONS

**LP7-D**  
ILLUMINATED  
PUSHBUTTONS

MOMENTARY ACTION, ATTRACTIVE & HIGHLY RUGGEDIZED FOR WET & DUSTY ENVIRONMENTS

The LP7-D series pushbutton switches feature a contoured dome style pushbutton. While sharing similar size and characteristics to the P9 series, the LP7-D offers added durability with its anodized aluminum alloy case.

Button versions include flush dome and raised dome. The switch series features short behind panel depth. They also offer excellent mechanical and electrical performance while operating under severe conditions found in demanding applications.

The LP7-D Dome series offers one million mechanical operations and an electrical life of 25,000 operations.

The LP7-D Dome series is a quality precision switch designed for use in panels, control grips, computers, instruments, heavy equipment and other demanding applications where attractive, highly ruggedized pushbutton switches are required.

The LP7-D series is manufactured to the highest standards and built to withstand harsh environments, offering anodized aluminum alloy cases with seal options of dusttight to IP64 or watertight to IP68S. The LP7-D series offers long life LED lighting in a variety of colors and can accommodate 2 & 12VDC power.

## Features:

- Attractive dome style button
- Watertight to IP68S; dusttight to IP64
- LED illuminated with the ability to accommodate 2 & 12VDC power
- Flush and raised buttons in glossy or matte finish available in a variety of colors
- 15/32" threaded case style
- RoHS/WEEE/Reach compliant



Flush Dome  
Also available with  
Raised Dome

### Standard Characteristics/Ratings:

**ELECTRICAL RATINGS:** Sea Level @ 28VDC or 115VAC

Load	N.O./N.C.	S.P.D.T
Resistive	5A	4A
Inductive	3A	2A
Motor	3A	N/A
DWV	1050Vrms through switch contacts only	
Low Level	10mA @ 30mV	

**Electrical Life:** 25,000 cycles

### LIGHTING:

Light Source Voltage (DC)	Actual Voltage Nominal (DC)	Voltage Max (DC)
2	2	2.6
12	13.5	14.5

**Mechanical Life:** 1,000,000 cycles

**Seal:** IP64 or IP68S

**Operating Temp Range:** -40°C to +85°C

**Operating Force:** 1.7 lbs. ± 0.5 lbs.

**Total Travel:** 0.080 inches max

**Overtravel:** 0.010 inches min

### MATERIALS:

**Case:** Anodized aluminum alloy

**Button:** Thermoplastic

**Terminals:** Silver with gold plate

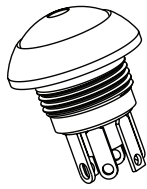
**Mounting Hardware:** Hex nut, lockwasher and panel seal gasket

## LP7-D PART NUMBER CODE

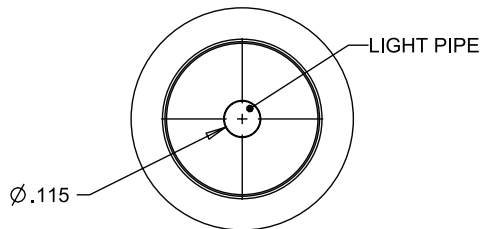
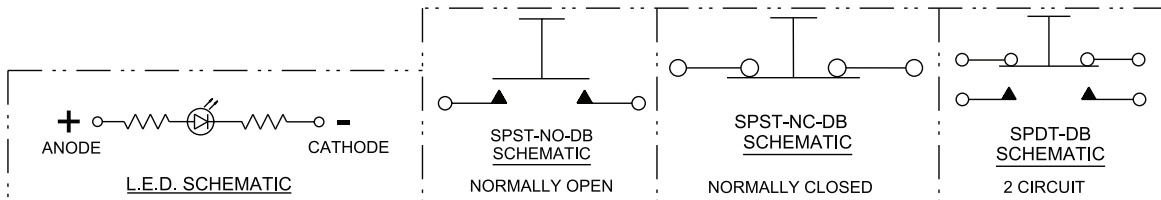
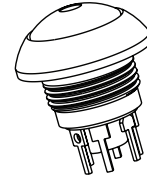
Button Style	Terminal Style/Seal	Circuit Form	Contact Rating	Light Source*	Case Color	Button Color
1. Flush 2. Raised 3. Flush Matte 4. Raised Matte	1. Standard Solder Terminal Dusttight 2. Standard Solder Terminal Watertight 3. P.C. Pin Terminal Dusttight 4. P.C. Pin Terminal Watertight	1. N.O. 2. N.C. 3. 2 Circuit	1. Standard Current 2. Low Level Current	A. 2V Red LED B. 2V Green LED C. 2V Amber LED D. 2V Blue LED E. 2V White LED F. 12V Red LED G. 12V Green LED H. 12V Amber LED J. 12V Blue LED K. 12V White LED L. 2V Deep Green LED M. 12V Deep Green LED	1. Clear 2. Black	1. Red 2. Black 3. Orange 4. Yellow 5. Green 6. Blue 7. Violet 8. Gray 9. White

\* For additional LED lighting options, contact factory.

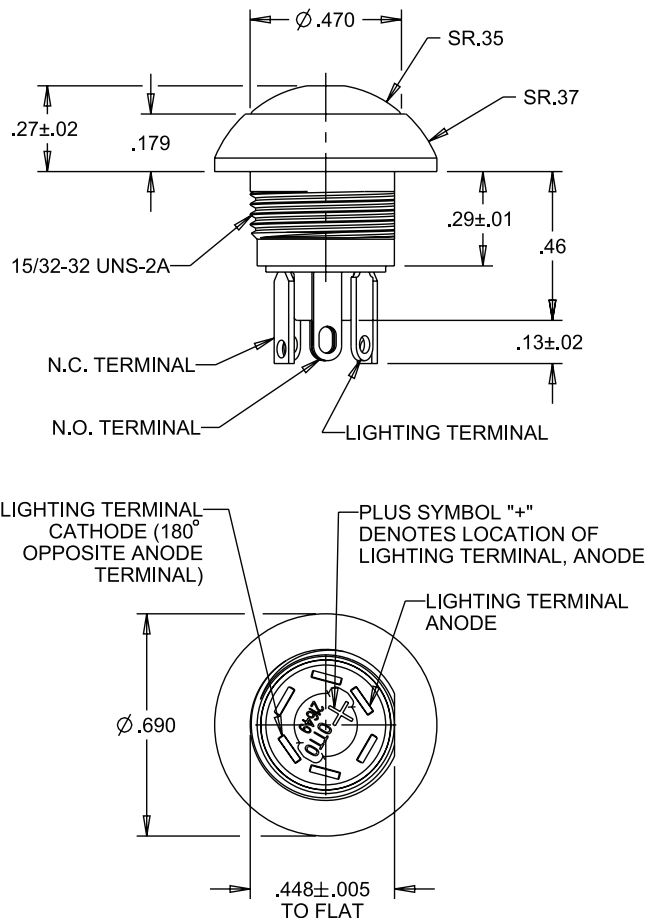
MOMENTARY ACTION, ATTRACTIVE & HIGHLY RUGGEDIZED FOR WET & DUSTY ENVIRONMENTS



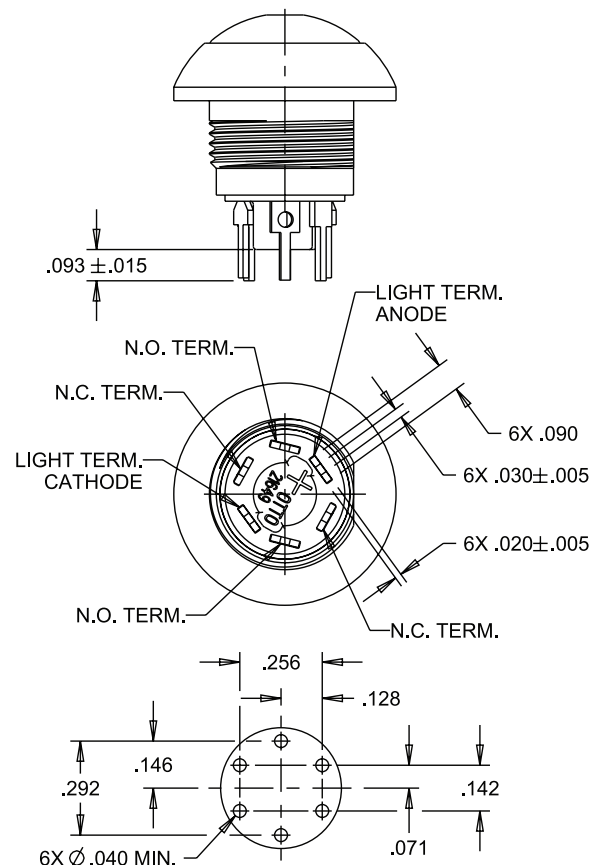
## LP7-D FLUSH BUTTON ROUND THREADED



### STANDARD TERMINALS (TERMINALS NOT ORIENTED TO CASE FLAT)



### P.C. TERMINALS (ORIENTATED TO CASE FLATS AS SHOWN)

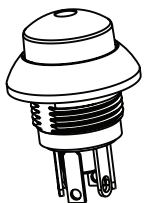


COMPONENT SIDE P.C. MOUNTING PATTERN,  
CASE FLAT ON RIGHT AS DEPICTED IN SWITCH VIEW

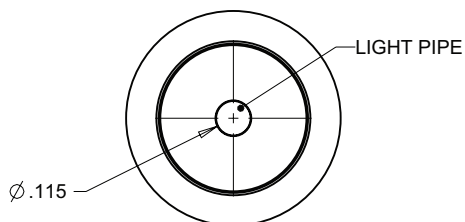
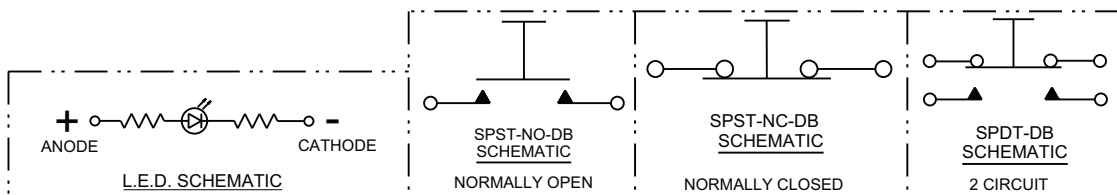
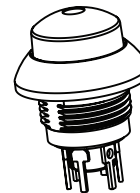
# SEALED DOME ILLUMINATED PUSHBUTTONS

**LP7-D**  
ILLUMINATED  
PUSHBUTTONS

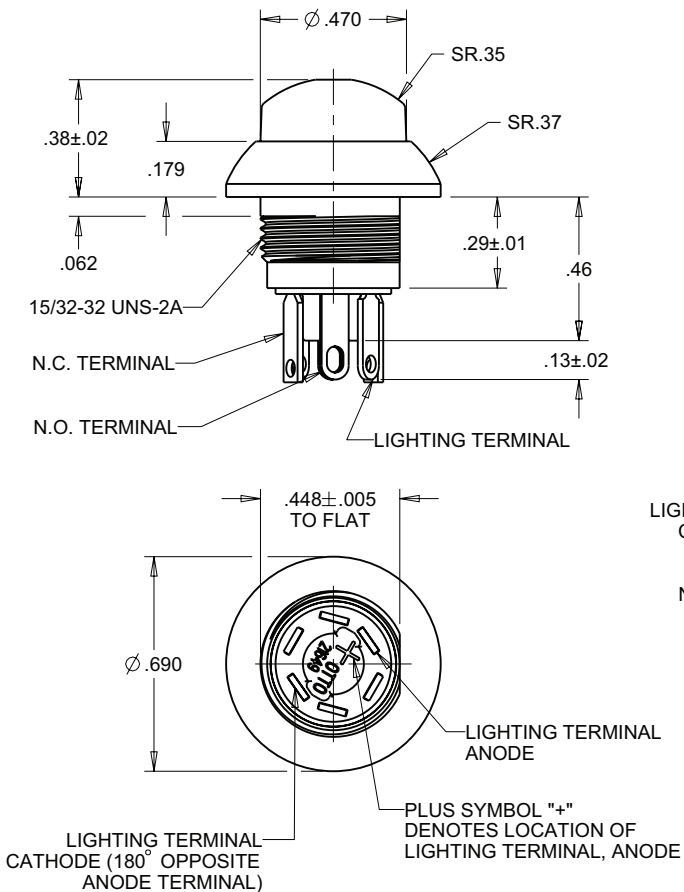
MOMENTARY ACTION, ATTRACTIVE & HIGHLY RUGGEDIZED FOR WET & DUSTY ENVIRONMENTS



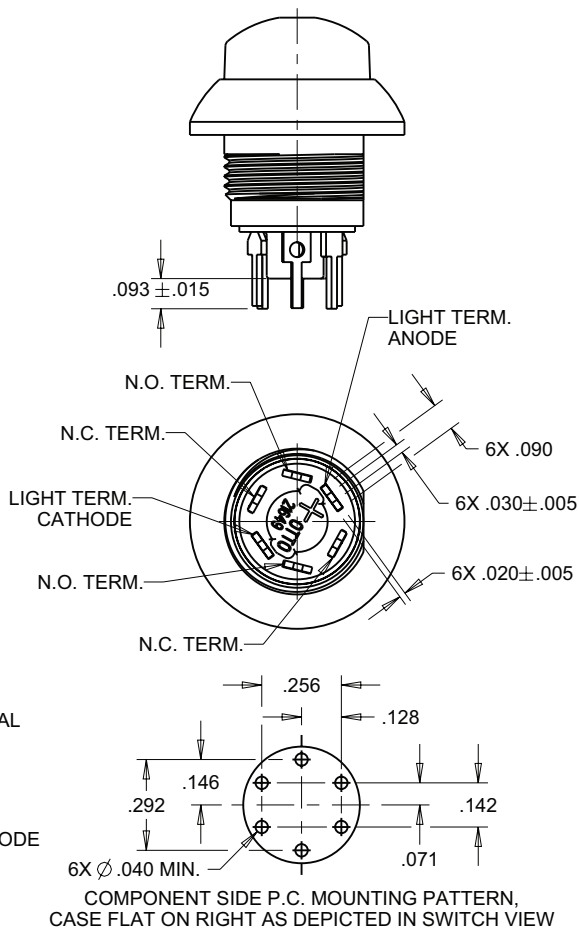
## LP7-D RAISED BUTTON ROUND THREADED



### STANDARD TERMINALS (TERMINALS NOT ORIENTED TO CASE FLAT)



### P.C. TERMINALS (ORIENTATED TO CASE FLATS AS SHOWN)



## X-ON Electronics

Largest Supplier of Electrical and Electronic Components

*Click to view similar products for [Pushbutton Switches](#) category:*

*Click to view products by [OTTO](#) manufacturer:*

Other Similar products are found below :

[8940K2012](#) [LW1L-M1C10V-A](#) [LW1L-M1C70-A](#) [LW2L-A1C20M-GD](#) [LW2L-M1C20M-A](#) [60324L](#) [M22-D-R-GB0/K11](#) [M7E-HRN2](#)  
[67021K512](#) [67081K512X](#) [701PB580](#) [7199K101](#) [810K12910](#) [810KSV30B](#) [MML21EA2ADK](#) [MML21KA3ABK](#) [MML23KA3AC05K-001](#)  
[MML23KW3AA01W](#) [8418K2](#) [8442K3](#) [8450K1](#) [860K11911T01A](#) [861901](#) [861K11911T01A07](#) [861K13810T00A14](#) [861K13911](#)  
[8646AB6X718UL](#) [8646ABUL](#) [9001KXRK](#) [907AYY100](#) [PMHD155A1](#) [9533CD4+U574+U4922](#) [95-414.000](#) [99-450.837](#) [99-453.837](#)  
[PV3H2B0NN-341](#) [1203MRA](#) [A22NZBGANGA](#) [A22NZBNANGA](#) [A22NZMPATRA](#) [A2PMA1X03EC56](#) [A3A-5123-02](#) [A3A-7140](#) [A3A-7310](#) [A3A-7340](#) [A3U-TMW-A2C-5M](#) [A595](#) [12037A2ULCSA](#) [ABD122N-B](#) [1211390004](#)