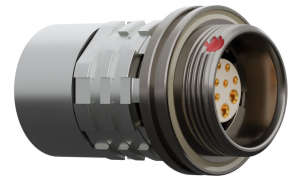


General information

Part number	KCOWAM-P16WBCO-0000
Termination	solder
Size	0
Locking principle	break , screw
Coding	a_key_amc
Cable Diameter	cable_amchd_0
Cable outlet	overmolding



Illustrations may differ from original product. Dimensions, unless otherwise specified, in mm.

**CODING:**A

**POSITIONS:** 16 positions

**DIMENSIONS:**

The pin layout corresponds to the view on the termination area

Contact insert description

Number of contacts	16
Contact type	sockets
Contact diameter	03mm
Insulator material	peek
Wire cross section	28_awg
Termination	solder

reverse\_gender\_on\_request

Technical information

Nominal current single contact	01_a	iec_60512_5_2
Nominal current insert	0,5 A	vde_0298_4
Test voltage	075_kv_dc	eia_364_20f

safety\_text

Mechanical and environmental data

Degree of protection*	ipsk8_ip6k9k
Operating temperature	51_125_c
Mating cycles	5000

mated

### Material and surface treatments

<b>Housing</b>	ruthenium
<b>Contact</b>	cu_alloy_gold

safety\_text\_2  
ul\_text  
illustrative\_text

## X-ON Electronics

Largest Supplier of Electrical and Electronic Components

*Click to view similar products for [Circular Push Pull Connectors](#) category:*

*Click to view products by [ODU](#) manufacturer:*

Other Similar products are found below :

[6407-249V-11273P](#) [6408-201V-13273](#) [6408-202V-13343](#) [6408-202V-17343](#) [FGC.2B.303.CYBD42Z](#) [FGJ.0B.304.CYZZ](#) [PLC.M1.0SL.LA](#)  
[1589430-2](#) [169-0105-02](#) [FFA.1S.130.LC](#) [6408-201V-11273](#) [6408-201V-11343](#) [6408-202V-25273](#) [980-0009-471](#) [NCG044SC2DC006](#)  
[GMA.4B.013.DN](#) [1331E103MZ](#) [342491](#) [PCA.1S.303.ZLLT](#) [FHG.00.305.CLAD35](#) [39050630713002](#) [1332E319FZ](#) [342379](#)  
[PAG.M0.6SL.AC52G](#) [300374](#) [SOB.187.GN](#) [FFA.2S.130.LC](#) [JBXEA2G003MSNDS](#) [JBXFN0G07MSSDSR](#) [FNG.1B.304.U2034](#)  
[JBXER1G04MCSDSR](#) [JBXEA2G04MSNDS](#) [1331M303FS](#) [JBXER1G03MCSDSR](#) [FEG.1B.302.CYBD52](#) [S41M08-P02MPN0-528S](#) [FLBB-](#)  
[05EGFS-GCP-001](#) [FLBB-05FGMS-GCP-207](#) [PCA.1S.306.CLCC66](#) [702.098.001.000.000](#) [10-711587-040](#) [FGG.2B.560.ZZF](#)  
[FGG.2B.560.ZZK](#) [FGG.4B.555.ZZF](#) [FGG.4B.555.ZZK](#) [PHG.4K.310.CLCC11](#) [ECG.2B.514.CLL](#) [GA1M08-P04LJG0-0000](#) [S10K0C-](#)  
[P05PFG0-5000](#) [FGB.1K.316.CLAC55Z](#)