

6DOF IMU 25 Click



PID: MIKROE-6421

6DOF IMU 25 Click is a compact add-on board for biopotential signal detection and motion tracking applications. This board features the ST1VAFE6AX biosensor from STMicroelectronics, which combines a vertical analog front-end (vAFE) for biopotential sensing with a high-performance 6-axis IMU. The IMU features a 3-axis accelerometer and 3-axis gyroscope with adjustable full-scale ranges, along with advanced functionalities like finite state machine (FSM), adaptive self-configuration (ASC), and a machine learning core (MLC) for on-device processing. The board also includes a 4.5KB FIFO buffer for efficient data handling and supports I2C and SPI communication interfaces for easy integration. Ideal for heart rate and pulse monitoring, electrocardiograms (ECG), activity tracking, and wearable device applications, 6DOF IMU 25 Click delivers precise biopotential and motion analysis in a compact and power-efficient design.

How does it work?

6DOF IMU 25 Click is based on the ST1VAFE6AX, an advanced biosensor from STMicroelectronics that integrates a vertical analog front-end (vAFE) for biopotential signal detection with a high-performance 6-axis inertial measurement unit (IMU). This dual-function device combines a 3-axis digital accelerometer (with selectable full-scale ranges of $\pm 2/\pm 4/\pm 8/\pm 16$ g) and a 3-axis digital gyroscope (offering ranges of $\pm 125/\pm 250/\pm 500/\pm 1000/\pm 2000/\pm 4000$ dps) for precise motion tracking. The sensor also includes state-of-the-art features like a finite state machine (FSM), sensor fusion low power (SFLP), adaptive self-configuration (ASC), and a machine learning core (MLC) with AI-capable filters, ensuring versatile performance across a range of applications.

Mikroe produces entire development toolchains for all major microcontroller architectures.

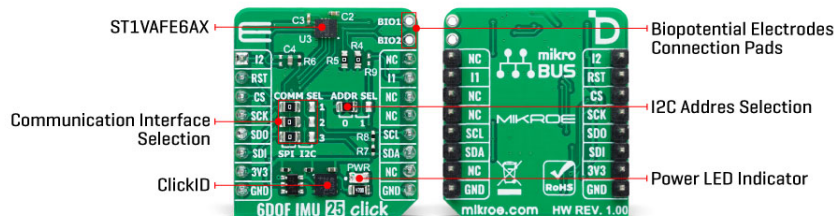
Committed to excellency, we are dedicated to helping engineers bring the project development up to speed and achieve outstanding results.



ISO 27001: 2013 certification of informational security management system.
ISO 14001: 2015 certification of environmental management system.
OHSAS 18001: 2008 certification of occupational health and safety management system.



ISO 9001: 2015 certification of quality management system (QMS).



The ST1VAFE6AX's innovative vAFE channel is optimized for low-power operation and supports configurable input impedance, enabling easy acquisition of biopotential signals from BIO pads alongside motion data. This synchronized integration ensures context-aware analysis directly at the sensor level, minimizing latency and power consumption. By leveraging its embedded features like FSM and MLC, the sensor enables standalone processing, reducing the workload on the microcontroller and supporting efficient edge computing. The result is a compact, versatile solution capable of performing advanced signal processing and machine learning tasks in resource-constrained environments.

A built-in 4.5KB FIFO buffer with compression and dynamic data allocation further enhances system power efficiency, allowing for optimized data handling and reduced processor intervention. The combined capabilities of the vAFE and IMU make 6DOF IMU 25 Click ideal for applications requiring precise biopotential signal monitoring and motion analysis such as heart rate and pulse monitoring, electrocardiograms (ECG), activity tracking, and well-being in digital healthcare, as well as wearable and portable devices.

Biopotential and motion data are accessed through the I2C or SPI interface, with a maximum frequency of 1MHz for I2C and 10MHz for SPI communication. The selection is made by positioning SMD jumpers labeled COMM SEL appropriately. Note that all the jumpers' positions must be on the same side, or the Click board™ may become unresponsive. While the I2C interface is selected, the ST1VAFE6AX allows the least significant bit (LSB) of its I2C address to be chosen using the SMD jumper labeled ADDR SEL.

This board also possesses two interrupts, I1 and I2, routed to, where, by default, the INT and AN pins stand on the mikroBUS™ socket, entirely programmed by the user through a serial interface. The event-detection interrupts enable efficient and reliable motion tracking and context awareness, implementing hardware recognition of free-fall events, 6D orientation, click and double-click sensing, activity or inactivity, stationary/motion detection, and wake-up events.

This Click board™ can be operated only with a 3.3V logic voltage level. The board must perform appropriate logic voltage level conversion before using MCUs with different logic levels. It also comes equipped with a library containing functions and example code that can be used as a reference for further development.

Specifications

Mikroe produces entire development toolchains for all major microcontroller architectures.

Committed to excellency, we are dedicated to helping engineers bring the project development up to speed and achieve outstanding results.



ISO 27001: 2013 certification of informational security management system.
ISO 14001: 2015 certification of environmental management system.
OHSAS 18001: 2008 certification of occupational health and safety management system.



ISO 9001: 2015 certification of quality management system (QMS).

Type	Motion
Applications	Ideal for heart rate and pulse monitoring, electrocardiograms (ECG), activity tracking, and wearable device applications
On-board modules	ST1VAFE6AX - biosensor with vAFE (vertical analog front-end) for biopotential signals and 6-axis IMU (inertial measurement unit) with AI and sensor fusion from STMicroelectronics
Key Features	Vertical analog front-end (vAFE) for biopotential signal acquisition, 6-axis IMU, features finite state machine (FSM), adaptive self-configuration (ASC), and machine learning core (MLC) with AI-capable filters, 4.5KB FIFO buffer, selectable interface, event detection, and more
Interface	I2C,I3C,SPI
Feature	ClickID
Compatibility	mikroBUS™
Click board size	S (28.6 x 25.4 mm)
Input Voltage	3.3V

Pinout diagram

This table shows how the pinout on 6DOF IMU 25 Click corresponds to the pinout on the mikroBUS™ socket (the latter shown in the two middle columns).

Notes	Pin	mikroBUS				Pin	Notes
Interrupt 2	I2	1	AN	PWM	16	NC	
ID SEL	RST	2	RST	INT	15	I1	Interrupt 1
SPI Select / ID COMM	CS	3	CS	RX	14	NC	
SPI Clock	SCK	4	SCK	TX	13	NC	
SPI Data OUT	SDO	5	MISO	SCL	12	SCL	I2C Clock
SPI Data IN	SDI	6	MOSI	SDA	11	SDA	I2C Data
Power Supply	3.3V	7	3.3V	5V	10	NC	
Ground	GND	8	GND	GND	9	GND	Ground

Onboard settings and indicators

Label	Name	Default	Description
LD1	PWR	-	Power LED Indicator
JP1-JP3	COMM SEL	Left	Communication Interface Selection SPI/I2C: Left position SPI, Right position I2C
JP4	ADDR SEL	Left	I2C Address Selection 0/1: Left position 0, Right position 1

Mikroe produces entire development toolchains for all major microcontroller architectures.

Committed to excellency, we are dedicated to helping engineers bring the project development up to speed and achieve outstanding results.



ISO 27001: 2013 certification of informational security management system.
ISO 14001: 2015 certification of environmental management system.
OHSAS 18001: 2008 certification of occupational health and safety management system.



ISO 9001: 2015 certification of quality management system (QMS).

6DOF IMU 25 Click electrical specifications

Description	Min	Typ	Max	Unit
Supply Voltage	-	3.3	-	V
Acceleration Measurement Range	± 2	-	± 16	g
Acceleration Sensitivity	0.061	-	0.488	mg/LSB
Angular Rate Measurement Range	± 125	-	± 4000	dps
Angular Rate Sensitivity	4.375	-	140	mdps/LSB

Software Support

We provide a library for the 6DOF IMU 25 Click as well as a demo application (example), developed using MIKROE [compilers](#). The demo can run on all the main MIKROE [development boards](#).

Package can be downloaded/installed directly from NECTO Studio Package Manager (recommended), downloaded from our [LibStock™](#) or found on [MIKROE github account](#).

Library Description

This library contains API for 6DOF IMU 25 Click driver.

Key functions

- `c6dofimu25_get_int1_pin` This function returns the interrupt 1 pin logic state.
- `c6dofimu25_get_data` This function reads the accelerometer, gyroscope, and temperature measurement data.
- `c6dofimu25_set_accel_fsr` This function sets the accel measurement full scale range.

Example Description

This example demonstrates the use of 6DOF IMU 25 Click by reading and displaying the accelerometer and gyroscope data (X, Y, and Z axis) as well as a temperature measurement in degrees Celsius.

The full application code, and ready to use projects can be installed directly from NECTO Studio Package Manager (recommended), downloaded from our [LibStock™](#) or found on [MIKROE github account](#).

Other MIKROE Libraries used in the example:

- MikroSDK.Board
- MikroSDK.Log
- Click.6DOFIMU25

Additional notes and informations

Depending on the development board you are using, you may need [USB UART click](#), [USB UART 2 Click](#) or [RS232 Click](#) to connect to your PC, for development systems with no UART to USB

Mikroe produces entire development toolchains for all major microcontroller architectures.

Committed to excellency, we are dedicated to helping engineers bring the project development up to speed and achieve outstanding results.



ISO 27001: 2013 certification of informational security management system.
ISO 14001: 2015 certification of environmental management system.
OHSAS 18001: 2008 certification of occupational health and safety management system.



ISO 9001: 2015 certification of quality management system (QMS).

interface available on the board. UART terminal is available in all MIKROE [compilers](#).

mikroSDK

This Click board™ is supported with [mikroSDK](#) - MIKROE Software Development Kit. To ensure proper operation of mikroSDK compliant Click board™ demo applications, mikroSDK should be downloaded from the [LibStock](#) and installed for the compiler you are using.

For more information about mikroSDK, visit the [official page](#).

Resources

[mikroBUS™](#)

[mikroSDK](#)

[Click board™ Catalog](#)

[Click boards™](#)

[ClickID](#)

Downloads

[6DOF IMU 25 click example on Libstock](#)

[6DOF IMU 25 click 2D and 3D files v100](#)

[ST1VAFE6AX datasheet](#)

[6DOF IMU 25 click schematic v100](#)

Mikroe produces entire development toolchains for all major microcontroller architectures.

Committed to excellency, we are dedicated to helping engineers bring the project development up to speed and achieve outstanding results.



ISO 27001: 2013 certification of informational security management system.
ISO 14001: 2015 certification of environmental management system.
OHSAS 18001: 2008 certification of occupational health and safety management system.



ISO 9001: 2015 certification of quality management system (QMS).

X-ON Electronics

Largest Supplier of Electrical and Electronic Components

Click to view similar products for [Multiple Function Sensor Development Tools](#) *category:*

Click to view products by [MikroElektronika](#) *manufacturer:*

Other Similar products are found below :

[SLG-0150](#) [EV_ICM-42670-P](#) [MIKROE-5448](#) [GX-F12A](#) [GX-F12A-P](#) [GX-F15A](#) [GX-F6A](#) [GX-F6A-P](#) [GX-F8B](#) [GX-H12A](#) [GX-H12A-P](#)
[1093](#) [MIKROE-2455](#) [MIKROE-2458](#) [MIKROE-2507](#) [MIKROE-2508](#) [176](#) [189](#) [1893](#) [ATQT4-XPRO](#) [GP30-DEMO MODULE](#) [910-28015A](#)
[GX-F15A-P](#) [GX-F8A](#) [GX-F8A-P](#) [GX-H15A-P](#) [GX-H8A](#) [GX-H8A-P](#) [28092](#) [SDAWIR01](#) [AAS-AQS-UNO](#) [SDAWIR02](#) [SDAF01](#)
[IQS620AEV04-S](#) [SMOD701KITV1](#) [DFR0131](#) [DFR0165](#) [DFR0280](#) [SEN0213](#) [SEN0217](#) [SEN0219](#) [SEN0220](#) [SEN0231](#) [SEK002](#)
[SSCCOMMBOARDV4P1C](#) [MIKROE-2786](#) [MIKROE-2731](#) [SPEEDTOGOKITTOBO1](#) [2JCIE-BL01-P1](#) [SEN0160](#)