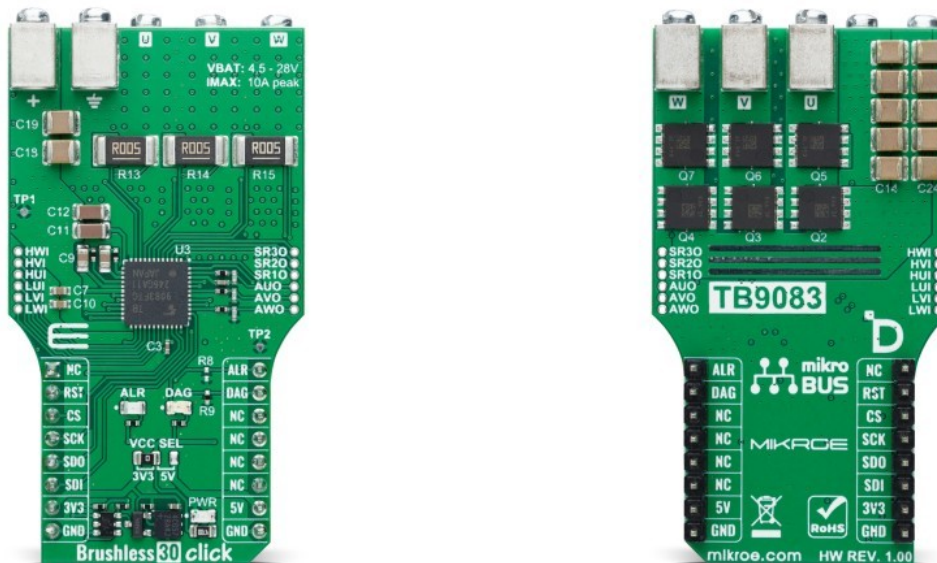


# Brushless 30 Click



PID: MIKROE-6337

Brushless 30 Click is a compact add-on board for precise and reliable control of brushless motors. This board features the TB9083FTG, a gate-driver IC from Toshiba Semiconductor, known for its robust performance in automotive environments. It features a three-phase BLDC pre-driver controlling six external MOSFETs, a safety relay pre-driver, and supports a wide input voltage range from 4.5V to 28V, delivering up to 10A peak current. It also includes additional pins for Hall sensor connections and comprehensive error detection capabilities. Brushless 30 Click is ideal for demanding automotive applications such as electric power steering (EPS), powered brakes, and automotive pumps where high-precision motor control is crucial.

## How does it work?

Brushless 30 Click is based on the TB9083FTG, a gate-driver IC from Toshiba Semiconductor, specifically made for automotive environments and qualified under AEC-Q100 and AEC-Q006 standards. This Click board™ leverages the TB9083FTG's capabilities, featuring a three-phase BLDC pre-driver that controls brushless motors through six onboard external MOSFETs ([TPH1R104PB](#)). Additionally, it integrates a safety relay pre-driver, ensuring an added layer of protection. The TB9083FTG also incorporates a built-in charge pump, adjustable current sense amplifiers for each motor phase oscillator circuits, and an SPI communication interface, enabling easy configuration and communication with the host MCU. To ensure reliable performance, the TB9083FTG also offers multiple error detection features, including undervoltage, overvoltage, overtemperature, and external MOSFET protection, making Brushless 30 Click a reliable choice for demanding automotive motor control applications such as electric power steering (EPS), powered brakes, and pumps.

Mikroe produces entire development toolchains for all major microcontroller architectures.

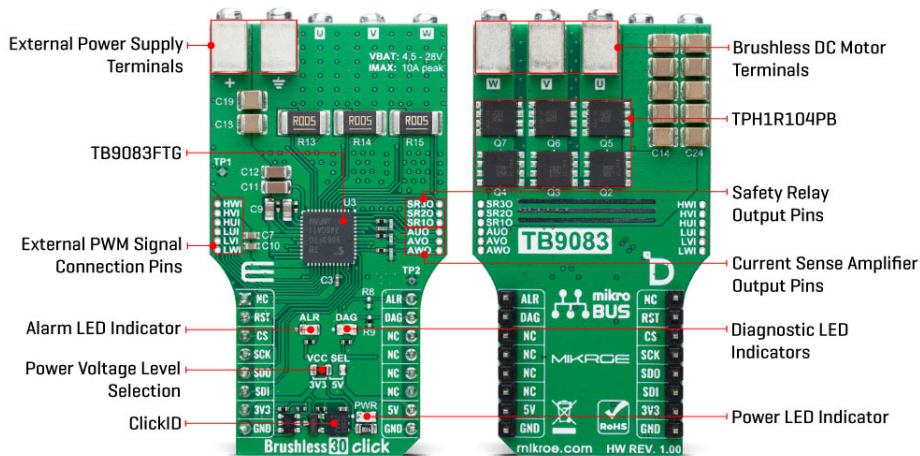
Committed to excellency, we are dedicated to helping engineers bring the project development up to speed and achieve outstanding results.



ISO 27001: 2013 certification of informational security management system.  
ISO 14001: 2015 certification of environmental management system.  
OHSAS 18001: 2008 certification of occupational health and safety management system.



ISO 9001: 2015 certification of quality management system (QMS).



This Click board™ is designed to support a wide range of external power supplies, accepting input voltages from 4.5V to 28V through terminals on the board's front side. It can deliver a peak output current of up to 10A, providing robust power for driving BLDC motors connected to the terminals on the bottom side. The board includes dedicated pins via the unpopulated J1 connector for the connection of the 6 PWM signals, provided by the driving device, required to drive the BLDC motor connected to the terminals of the Brushless 30 Click board™.

As previously mentioned, Brushless 30 Click communicates with the host MCU through a 4-wire SPI interface, supporting a maximum clock frequency of 2MHz, ensuring fast and reliable data transfer. The SPI interface allows for the modification of settings, such as trigger thresholds and response actions. In addition to the interface pins, the board also uses two other pins on the mikroBUS™ socket. The ALR pin is used to turn ON or OFF the motor drive and the safety pre-driver circuit. i.e. in case an abnormality situation is detected. This pin is connected to a red ALR LED indicator that provides visual alerts for such conditions. Similarly, the DAG pin functions as a diagnostic output of the TB9083FTG, offering information on whether the an error condition has been detected.. This pin is linked to an orange DAG LED indicator, which visually signals the diagnostic status.

Besides the J1 header, this board includes several other unpopulated headers offering additional functionality. The AxO (J3) header is connected to the current detector circuit, which features three motor current detector amplifiers. These outputs can amplify the differential voltage caused by the current passing through the shunt resistor connected to the motor drive, providing precise current measurements. The SRxO (J4) header is linked to the safety relay pre driver, which controls the power or motor relay connected to this unpopulated header. The safety relay pre-driver circuit is managed through the CP\_RLY\_CTRL SPI register and includes a built-in 500Ω resistor and a backflow prevention diode to protect against reverse connections.

This Click board™ can operate with either 3.3V or 5V logic voltage levels selected via the VCC SEL jumper. This way, both 3.3V and 5V capable MCUs can use the communication lines properly. Also, this Click board™ comes equipped with a library containing easy-to-use functions and an example code that can be used as a reference for further development.

## Specifications

|              |   |
|--------------|---|
| Type         | Brushless   |
| Applications | Ideal for electric power steering (EPS), powered brakes, and automotive pumps |

Mikroe produces entire development toolchains for all major microcontroller architectures.

Committed to excellency, we are dedicated to helping engineers bring the project development up to speed and achieve outstanding results.



ISO 27001: 2013 certification of informational security management system.  
ISO 14001: 2015 certification of environmental management system.  
OHSAS 18001: 2008 certification of occupational health and safety management system.




ISO 9001: 2015 certification of quality management system (QMS).

|                  |  |
|------------------|--|
| On-board modules | TB9083FTG - automotive gate-driver IC from Toshiba Semiconductor   |
| Key Features     | Qualified under AEC-Q100 and AEC-Q006 standards, safety relay pre-driver with multiple error detection, broad range of external power supply, peak output current of up to 10A, SPI interface, 6 PWM inputs, alarm and diagnostic indicators, and more |
| Interface        | SPI  |
| Feature          | ClickID  |
| Compatibility    | mikroBUS™  |
| Click board size | L (57.15 x 25.4 mm)  |
| Input Voltage    | 3.3V or 5V, External   |

## Pinout diagram

This table shows how the pinout on Brushless 30 Click corresponds to the pinout on the mikroBUS™ socket (the latter shown in the two middle columns).

| Notes                | Pin         |  |      |     |    | Pin        | Notes                     |
|----------------------|-------------|--|------|-----|----|------------|---------------------------|
|                      | NC          | 1  | AN   | PWM | 16 | <b>ALR</b> | Pre-Driver Enable / Alarm |
| ID SEL               | <b>RST</b>  | 2  | RST  | INT | 15 | <b>DAG</b> | Diagnostic Output         |
| SPI Select / ID COMM | <b>CS</b>   | 3  | CS   | RX  | 14 | NC         |                           |
| SPI Clock            | <b>SCK</b>  | 4  | SCK  | TX  | 13 | NC         |                           |
| SPI Data OUT         | <b>SDO</b>  | 5  | MISO | SCL | 12 | NC         |                           |
| SPI Data IN          | <b>SDI</b>  | 6  | MOSI | SDA | 11 | NC         |                           |
| Power Supply         | <b>3.3V</b> | 7  | 3.3V | 5V  | 10 | <b>5V</b>  | Power Supply              |
| Ground               | <b>GND</b>  | 8  | GND  | GND | 9  | <b>GND</b> | Ground                    |

## Onboard settings and indicators

| Label | Name    | Default | Description  |
|-------|---------|---------|--|
| LD1   | PWR     | -       | Power LED Indicator  |
| LD2   | DAG     | -       | Diagnostic LED Indicator   |
| LD3   | ALR     | -       | Alarm LED Indicator  |
| JP1   | VCC SEL | Left    | Power Voltage Level Selection 3V3/5V: Left position 3V3, Right position 5V |

## Brushless 30 Click electrical specifications

| Description           | Min | Typ | Max | Unit |
|-----------------------|-----|-----|-----|------|
| Supply Voltage        | 3.3 | -   | 5   | V    |
| External Power Supply | 4.5 | -   | 28  | V    |

Mikroe produces entire development toolchains for all major microcontroller architectures.

Committed to excellency, we are dedicated to helping engineers bring the project development up to speed and achieve outstanding results.



ISO 27001: 2013 certification of informational security management system.  
ISO 14001: 2015 certification of environmental management system.  
OHSAS 18001: 2008 certification of occupational health and safety management system.



ISO 9001: 2015 certification of quality management system (QMS).

|                |   |   |    |   |
|----------------|---|---|----|---|
| Output Current | - | - | 10 | A |
|----------------|---|---|----|---|

## Software Support

We provide a library for the Brushless 30 Click as well as a demo application (example), developed using MIKROE [compilers](#). The demo can run on all the main MIKROE [development boards](#).

Package can be downloaded/installed directly from NECTO Studio Package Manager (recommended), downloaded from our [LibStock™](#) or found on [MIKROE github account](#).

## Library Description

This library contains API for Brushless 30 Click driver.

Key functions

- `brushless30_write_reg` This function writes a data word to the selected register by using SPI serial interface.
- `brushless30_read_reg` This function reads a data word from the selected register by using SPI serial interface.
- `brushless30_get_diag_pin` This function returns the DIAG pin logic state.

## Example Description

This example configures the Brushless 30 Click and makes it ready for the motor control over 6 PWM input signals.

The full application code, and ready to use projects can be installed directly from NECTO Studio Package Manager (recommended), downloaded from our [LibStock™](#) or found on [MIKROE github account](#).

Other MIKROE Libraries used in the example:

- MikroSDK.Board
- MikroSDK.Log
- Click.Brushless30

## Additional notes and informations

Depending on the development board you are using, you may need [USB UART click](#), [USB UART 2 Click](#) or [RS232 Click](#) to connect to your PC, for development systems with no UART to USB interface available on the board. UART terminal is available in all MIKROE [compilers](#).

## mikroSDK

This Click board™ is supported with [mikroSDK](#) - MIKROE Software Development Kit. To ensure proper operation of mikroSDK compliant Click board™ demo applications, mikroSDK should be downloaded from the [LibStock](#) and installed for the compiler you are using.

Mikroe produces entire development toolchains for all major microcontroller architectures.

Committed to excellency, we are dedicated to helping engineers bring the project development up to speed and achieve outstanding results.



ISO 27001: 2013 certification of informational security management system.  
ISO 14001: 2015 certification of environmental management system.  
OHSAS 18001: 2008 certification of occupational health and safety management system.



ISO 9001: 2015 certification of quality management system (QMS).

For more information about mikroSDK, visit the [official page](#).

## Resources

[mikroBUS™](#)

[mikroSDK](#)

[Click board™ Catalog](#)

[Click boards™](#)

[ClickID](#)

## Downloads

[Brushless 30 click example on Libstock](#)

[Brushless 30 click 2D and 3D files v100](#)

[TB9083FTG datasheet](#)

[TPH1R104PB datasheet](#)

[Brushless 30 click schematic v100](#)

Mikroe produces entire development toolchains for all major microcontroller architectures.

Committed to excellency, we are dedicated to helping engineers bring the project development up to speed and achieve outstanding results.



ISO 27001: 2013 certification of informational security management system.  
ISO 14001: 2015 certification of environmental management system.  
OHSAS 18001: 2008 certification of occupational health and safety management system.



ISO 9001: 2015 certification of quality management system (QMS).

## X-ON Electronics

Largest Supplier of Electrical and Electronic Components

*Click to view similar products for* [Power Management IC Development Tools](#) *category:*

*Click to view products by* [MikroElektronika](#) *manufacturer:*

Other Similar products are found below :

[EVB-EP5348UI](#) [BQ25010EVM](#) [ISLUSBI2CKIT1Z](#) [ISL8002AEVAL1Z](#) [ISL91108IIA-EVZ](#) [ISL28022EVKIT1Z](#) [STEVAL-ISA008V1](#)  
[NCP10671B05GEVB](#) [EVB-EN6337QA](#) [SAMPLEBOXILD8150TOBO1](#) [AP63300WU-EVM](#) [AP61100Z6-EVM](#)  
[KITA2GTC387MOTORCTRTOBO1](#) [AEK-MOT-TK200G1](#) [EVLONE65W](#) [STEVAL-ILH006V1](#) [STEVAL-IPE008V2](#) [STEVAL-IPP001V2](#)  
[STEVAL-ISA013V1](#) [STEVAL-ISA067V1](#) [STEVAL-ISQ002V1](#) [TPS2306EVM-001](#) [TPS2330EVM-185](#) [TPS40001EVM-001](#) [SECO-](#)  
[HVDCDC1362-15W-GEVB](#) [BTS7030-2EPA](#) [LTC3308AIV#WTRPBF](#) [TLT807B0EPV](#) [BTS71033-6ESA](#) [EV13N91A](#) [EV55W64A](#)  
[Si8285\\_86v2-KIT](#) [AP33772S-EVB](#) [EVALM7HVIGBTTPFCINV4TOBO1](#) [903-0300-000](#) [902-0173-000](#) [903-0301-000](#) [ROA1286023/1](#)  
[REFSHA35IMD111TSYSTOBO1](#) [150037482](#) [TDINV3000W50B-KIT](#) [NCP1681CCM1KWGEVB](#) [I7C08A-CC3-EVK-P2](#) [I7C12A-CC3-](#)  
[EVK-P2](#) [i7C20A-CC3-EVK-P2](#) [APEK89303KET-01-T](#) [NCP1681MM500WGEVB](#) [SI83401BAA-KIT](#) [SI83402BAA-KIT](#) [SI83411BAA-KIT](#)