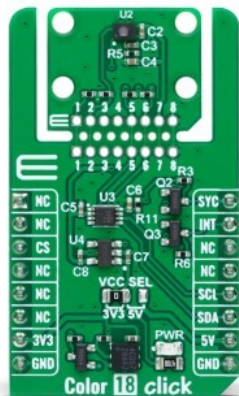


## Color 18 Click



PID: MIKROE-6284

Color 18 Click is a compact add-on board for accurate ambient light detection and flicker monitoring. This board features the TCS3530, a true color ambient light sensor from ams OSRAM. The TCS3530 features true color XYZ sensing, flicker detection up to 7kHz, and eight concurrent sensing channels with independent gain configurations. It also includes a UV/IR blocking filter for precise light measurements and a unique Click Snap feature, allowing the main sensor area to become movable by breaking the PCB for flexible implementation. Color 18 Click is ideal for applications such as calculating CCT and chromaticity, auto white balancing, light type identification, and ensuring flicker-free camera operation.

### How does it work?

Color 18 Click is based on the TCS3530, a true color ambient light sensor from ams OSRAM. This sensor has advanced capabilities such as true color XYZ ambient light detection and selective flicker detection, supporting frequencies up to 7kHz. It is fully embedded, with an integrated aperture and diffuser, ensuring precise pre-calibration by maintaining accurate distances between the photodiodes and other optical elements. This sophisticated design allows the sensor to provide eight concurrent ambient light sensing channels, each with an independent gain configuration, which can be linked to any of the 27 photodiodes. Additionally, the built-in sequencer makes automated measurements, eliminating the need for re-programming after each cycle. The sensor's UV/IR blocking filter enhances its ability to measure ambient light accurately and calculate key parameters such as illuminance, chromaticity, and correlated color temperature (CCT) for optimal display management.

Mikroe produces entire development toolchains for all major microcontroller architectures.

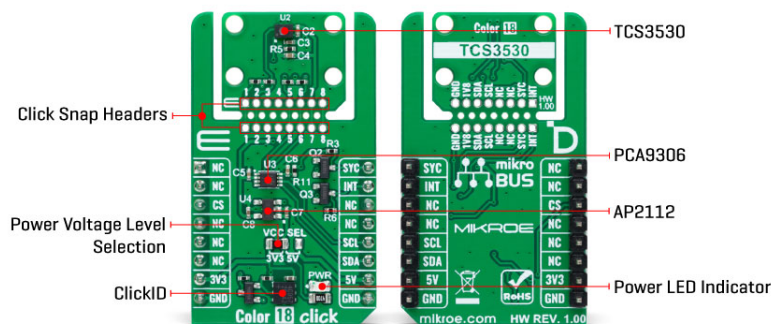
Committed to excellency, we are dedicated to helping engineers bring the project development up to speed and achieve outstanding results.



ISO 27001: 2013 certification of informational security management system.  
ISO 14001: 2015 certification of environmental management system.  
OHSAS 18001: 2008 certification of occupational health and safety management system.



ISO 9001: 2015 certification of quality management system (QMS).



Moreover, the TCS3530 on the Color 18 Click offers direct ambient light flicker detection, capable of handling both traditional 50Hz/60Hz AC light sources and modern LED lighting systems with PDM control. This flicker detection operates in tandem with ambient light sensing, with its gain settings managed independently, and allows for external flicker frequency calculations on a host MCU. Based on these features, this Click board™ makes an excellent choice for precise lighting management and display optimization like calculating CCT and chromaticity, supporting auto white balancing, identifying light types, and ensuring flicker-free camera operation.

This Click board™ is designed in a unique format supporting the newly introduced MIKROE feature called "Click Snap." Unlike the standardized version of Click boards, this feature allows the main sensor area to become movable by breaking the PCB, opening up many new possibilities for implementation. Thanks to the Snap feature, the switches can operate autonomously by accessing their signals directly on the pins marked 1-8. Additionally, the Snap part includes a specified and fixed screw hole position, enabling users to secure the Snap board in their desired location.

This Click board™ uses a standard 2-wire I2C interface to communicate with the host MCU, supporting Standard mode with up to 400kHz of frequency clock. The I2C interface and registers allow for controlling various sensor functions, such as offset and measurement mode settings, interrupt system management for interrupt signals available on the INT pin, and adjusting offset and threshold values for color sensor data. This flexibility ensures precise and customizable operations tailored to specific application needs.

The SYNC pin on the mikroBUS™ socket serves a dual-purpose function. It can be used as a synchronization input, allowing the sensor to align its measurements with external events or signals, ensuring accurate timing and coordination in applications that require precise synchronization. Alternatively, it can also function as a general-purpose open-drain input/output pin, providing additional flexibility for various control or signaling tasks, depending on the application's specific requirements.

The TCS3530 does not require a specific Power-Up sequence but requires a voltage of 1.8V for its interface and logic part to work correctly. Therefore, a small regulating LDO, the [AP2112](#), provides a 1.8V out of selected mikroBUS™ power rail. Since the sensor operates on 1.8V, this Click board™ also features the [PCA9306](#) voltage-level translator, allowing the TCS3530 to work properly with 3.3V and 5V MCU.

Mikroe produces entire development toolchains for all major microcontroller architectures.

Committed to excellency, we are dedicated to helping engineers bring the project development up to speed and achieve outstanding results.



ISO 27001: 2013 certification of informational security management system.  
 ISO 14001: 2015 certification of environmental management system.  
 OHSAS 18001: 2008 certification of occupational health and safety management system.



ISO 9001: 2015 certification of quality management system (QMS).

This Click board™ can operate with either 3.3V or 5V logic voltage levels selected via the VCC SEL jumper. This way, both 3.3V and 5V capable MCUs can use the communication lines properly. Also, this Click board™ comes equipped with a library containing easy-to-use functions and an example code that can be used as a reference for further development.

## Click Snap


**Click Snap** is an innovative feature of our standardized Click add-on boards, introducing a new level of flexibility and ease of use. This feature allows for easy detachment of the main sensor area by simply snapping the PCB along designated lines, enabling various implementation possibilities. For detailed information about Click Snap, please visit the [official page](#) dedicated to this feature.

## Specifications

Type	Color Sensing,Optical
Applications	Ideal for calculating CCT and chromaticity, auto white balancing, light type identification, and ensuring flicker-free camera operation
On-board modules	TCS3530 - true color ambient light sensor from ams OSRAM
Key Features	True color XYZ ALS, selective flicker detection, eight concurrent ALS channels, integrated UV/IR blocking filter, Click Snap feature, synchronization and interrupt signals, I2C interface, and more
Interface	I2C
Feature	Click Snap,ClickID
Compatibility	mikroBUS™
Click board size	M (42.9 x 25.4 mm)
Input Voltage	3.3V or 5V

## Pinout diagram

This table shows how the pinout on Color 18 Click corresponds to the pinout on the mikroBUS™ socket (the latter shown in the two middle columns).

Notes	Pin					Pin	Notes
	NC	1	AN	PWM	16	<b>SYC</b>	Synchronization/GPIO Signal
	NC	2	RST	INT	15	<b>INT</b>	Interrupt
ID COMM	<b>CS</b>	3	CS	RX	14	NC	
	NC	4	SCK	TX	13	NC	
	NC	5	MISO	SCL	12	<b>SCL</b>	I2C Clock
	NC	6	MOSI	SDA	11	<b>SDA</b>	I2C Data
Power Supply	<b>3.3V</b>	7	3.3V	5V	10	<b>5V</b>	Power Supply

Mikroe produces entire development toolchains for all major microcontroller architectures.

Committed to excellency, we are dedicated to helping engineers bring the project development up to speed and achieve outstanding results.



ISO 27001: 2013 certification of informational security management system.  
ISO 14001: 2015 certification of environmental management system.  
OHSAS 18001: 2008 certification of occupational health and safety management system.



ISO 9001: 2015 certification of quality management system (QMS).

Ground	<b>GND</b>	8	GND	GND	9	<b>GND</b>	Ground
--------	------------	---	-----	-----	---	------------	--------

## Onboard settings and indicators

Label	Name	Default	Description
LD1	PWR	-	Power LED Indicator
JP1	VCC SEL	Left	Power Voltage Level Selection 3V3/5V: Left position 3V3, Right position 5V

## Color 18 Click electrical specifications

Description	Min	Typ	Max	Unit
Supply Voltage	3.3	-	5	V
Channel Center Wavelength (X1/X2/Y/Z/HgL/HgH)	436/594/555/445/519/545			nm
ALS Gain	0.5	-	4096	-

## Software Support

We provide a library for the Color 18 Click as well as a demo application (example), developed using MIKROE [compilers](#). The demo can run on all the main MIKROE [development boards](#).

Package can be downloaded/installed directly from NECTO Studio Package Manager (recommended), downloaded from our [LibStock™](#) or found on [MIKROE github account](#).

## Library Description

This library contains API for Color 18 Click driver.

Key functions

- `color18_get_int_pin` This function returns the INT pin logic state.
- `color18_read_data` This function checks if the color measurement data are ready for all channels and reads them.
- `color18_clear_fifo` This function clears the FIFO buffers and interrupts.

## Example Description

This example demonstrates the use of Color 18 click by reading and displaying the values from all 8 modulator channels.

The full application code, and ready to use projects can be installed directly from NECTO Studio Package Manager (recommended), downloaded from our [LibStock™](#) or found on [MIKROE github account](#).

Other MIKROE Libraries used in the example:

- MikroSDK.Board
- MikroSDK.Log

Mikroe produces entire development toolchains for all major microcontroller architectures.  
Committed to excellency, we are dedicated to helping engineers bring the project development up to speed and achieve outstanding results.



ISO 27001: 2013 certification of informational security management system.  
ISO 14001: 2015 certification of environmental management system.  
OHSAS 18001: 2008 certification of occupational health and safety management system.



ISO 9001: 2015 certification of quality management system (QMS).

- Click.Color18

## Additional notes and informations

Depending on the development board you are using, you may need [USB UART click](#), [USB UART 2 Click](#) or [RS232 Click](#) to connect to your PC, for development systems with no UART to USB interface available on the board. UART terminal is available in all MIKROE [compilers](#).

## mikroSDK

This Click board™ is supported with [mikroSDK](#) - MIKROE Software Development Kit. To ensure proper operation of mikroSDK compliant Click board™ demo applications, mikroSDK should be downloaded from the [LibStock](#) and installed for the compiler you are using.

For more information about mikroSDK, visit the [official page](#).

## Resources

[mikroBUS™](#)

[mikroSDK](#)

[Click board™ Catalog](#)

[Click boards™](#)

[ClickID](#)

## Downloads

[Color 18 click example on Libstock](#)

[TCS3530 datasheet](#)

[Color 18 click 2D and 3D files v100](#)

[Color 18 click schematic v100](#)

Mikroe produces entire development toolchains for all major microcontroller architectures.

Committed to excellency, we are dedicated to helping engineers bring the project development up to speed and achieve outstanding results.



ISO 27001: 2013 certification of informational security management system.  
 ISO 14001: 2015 certification of environmental management system.  
 OHSAS 18001: 2008 certification of occupational health and safety management system.



ISO 9001: 2015 certification of quality management system (QMS).

## X-ON Electronics

Largest Supplier of Electrical and Electronic Components

*Click to view similar products for* [Optical Sensor Development Tools](#) *category:*

*Click to view products by* [MikroElektronika](#) *manufacturer:*

Other Similar products are found below :

[TCS3430-DB](#) [TSL2520-DB](#) [SX9210EVKA](#) [MIKROE-5421](#) [AR0544CSSC11SMKAH3-GEVB](#) [AR0544CSSM11SMKAH3-GEVB](#)  
[AR0246NPSC32SMKAH3-GEVB](#) [AR0147AT3C00XUEGH3-S4-GEVB](#) [MARS1-AR0341AT2C-GEVB](#) [AS0149ATSC00XUEAH3-GEVB](#)  
[MARS1-AR0220AT4B-GEVB](#) [MARS1-AR0239ATSCS-GEVB](#) [MARS1-AR0239ATS-GEVB](#) [MARS1-AR0820AT4B-GEVB](#)  
[MT9M114EBLSTCZDH-GEVB](#) [SEN0043](#) [SEN0162](#) [TMD2672EVM](#) [1918](#) [SEN0097](#) [SEN0212](#) [SEN0228](#) [MT9M114EBLSTCZH3-GEVB](#)  
[SEN0144](#) [TMD2725-EVM](#) [LA0151CSGEVB](#) [AP0100AT2L00XUGAH3-GEVB](#) [AS722X/1X DEMO KIT](#) [SEN-14351](#) [SEN-14347](#) [PIR-01](#)  
[PIEZO-01](#) [MT9M114EBLSTCZD3-GEVK](#) [SI1102EK](#) [1980](#) [2748](#) [5591](#) [5610](#) [5939](#) [5940](#) [5970](#) [ALS-GEVB](#) [ZTPD-EVM-KIT](#) [AS7264N](#)  
[DEMO KIT](#) [AS7265X DEMO KIT V3.0](#) [AS7341 EVAL KIT](#) [AS7341 EVK REFLECTIO](#) [AS7343 EVK ALS](#) [AS7343 EVK Reflection](#)  
[NANOBERRY\\_COLOR\\_EK](#)