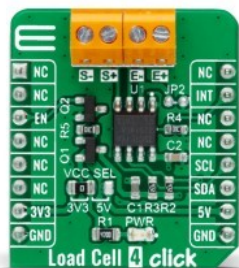


# Load Cell 4 Click



PID: MIKROE-4458

**Load Cell 4 Click** is a compact add-on board that contains a resistive sensor signal conditioner with a fast power-up data output response. This board features the [ZSC31014](#), a CMOS integrated circuit for highly accurate amplification and analog-to-digital conversion of differential and half-bridge input signals from Renesas. This Click board™ is well suited for sensor-specific correction of bridge sensors and adjustable to nearly all piezo-resistive bridge sensors. Digital compensation of signal offset, sensitivity, temperature drift, and non-linearity is accomplished via an internal signal processor running a correction algorithm with calibration coefficients stored in a non-volatile EEPROM. This Click board™ has many features that make it a perfect solution for safety-critical and weight measurement applications.

Load Cell 4 Click is supported by a [mikroSDK](#) compliant library, which includes functions that simplify software development. This [Click board™](#) comes as a fully tested product, ready to be used on a system equipped with the [mikroBUS™](#) socket.

## How does it work?

Load Cell 4 Click is based on the ZSC31014, a CMOS integrated circuit for highly accurate amplification and analog-to-digital conversion of differential and half-bridge input signals from Renesas. The ZSC31014 has a fully differential chopper-stabilized preamplifier with 8 programmable gain settings (1.5, 3, 6, 12, 24, 48, 96, and 192) through a 14-bit ADC. The resolution of the output depends on the input span and the analog gain setting. The system clock of the ZSC31014 can operate at 1MHz (lower power, better noise performance) or at 4MHz (faster sample rates). Internal DSP core uses coefficients stored in EEPROM to precisely calibrate/condition the amplified differential input signal. Temperature can be measured from an internal temperature sensor, which can be calibrated to compensate for the temperature

Mikroe produces entire development toolchains for all major microcontroller architectures.

Committed to excellency, we are dedicated to helping engineers bring the project development up to speed and achieve outstanding results.

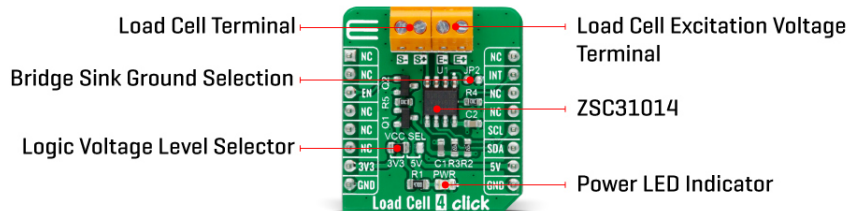


ISO 27001: 2013 certification of informational security management system.  
ISO 14001: 2015 certification of environmental management system.  
OHSAS 18001: 2008 certification of occupational health and safety management system.



ISO 9001: 2015 certification of quality management system (QMS).

effects of the sensor bridge.



After the Power-On Reset function, the ZSC31014 wakes, and if it receives the Start\_CM command during the command window, it goes into Command Mode. This Mode is primarily used in the calibration environment, and during Command Mode, the device executes commands sent by the I2C master. The ZSC31014 remains in Command Mode until it receives the Start\_NOM command, which starts the Normal Operation Mode. Operation after the Power-On sequence depends on whether the part is programmed in Sleep Mode or Update Mode. In Sleep Mode, the ZSC31014 waits for commands from the master before taking measurements, while in Update Mode, data is taken at a fixed, selectable rate.

Load Cell 4 Click communicates with MCU using the standard I2C 2-Wire interface with a clock frequency from 100 up to 400 kHz. The INT pin of the mikroBUS™ socket, used as an interrupt, rises when new output data is ready and falls when the next I2C communication occurs. It is most useful if the part is configured in Sleep Mode to indicate to the system that a new conversion is ready. Besides, this Click board™ also possesses an Enable pin labeled as EN, routed to the CS pin of the mikroBUS™ socket, which serves to turn the ZSC31014's power supply on/off.

This Click board™ is designed to operate with both 3.3V and 5V logic voltage levels selected via the VCC SEL jumper. It allows for both 3.3V and 5V capable MCUs to use the I2C communication lines properly. However, the Click board™ comes equipped with a library that contains functions and an example code that can be used, as a reference, for further development.

## Specifications

|                  |                                                                                                                                                                                                      |
|------------------|------------------------------------------------------------------------------------------------------------------------------------------------------------------------------------------------------|
| Type             | Force                                                                                                                                                                                                |
| Applications     | Can be used for safety-critical and weight measurement applications.                                                                                                                                 |
| On-board modules | Load Cell 4 Click is based on the ZSC31014, a CMOS integrated circuit for highly accurate amplification and analog-to-digital conversion of differential and half-bridge input signals from Renesas. |
| Key Features     | High accuracy, digital compensation of sensor                                                                                                                                                        |

Mikroe produces entire development toolchains for all major microcontroller architectures.

Committed to excellency, we are dedicated to helping engineers bring the project development up to speed and achieve outstanding results.



ISO 27001: 2013 certification of informational security management system.  
ISO 14001: 2015 certification of environmental management system.  
OHSAS 18001: 2008 certification of occupational health and safety management system.




ISO 9001: 2015 certification of quality management system (QMS).

|                  |                                                                                                                                                                                                             |
|------------------|-------------------------------------------------------------------------------------------------------------------------------------------------------------------------------------------------------------|
|                  | offset, sensitivity, temperature drift, and non-linearity, eight programmable analog gain settings, internal temperature compensation for sensor correction and for corrected temperature output, and more. |
| Interface        | I2C                                                                                                                                                                                                         |
| Feature          | No ClickID                                                                                                                                                                                                  |
| Compatibility    | mikroBUS™                                                                                                                                                                                                   |
| Click board size | S (28.6 x 25.4 mm)                                                                                                                                                                                          |
| Input Voltage    | 3.3V or 5V                                                                                                                                                                                                  |

## Pinout diagram

This table shows how the pinout on Load Cell 4 Click corresponds to the pinout on the mikroBUS™ socket (the latter shown in the two middle columns).

| Notes        | Pin         |  |      |     |    | Pin        | Notes        |
|--------------|-------------|-----------------------------------------------------------------------------------|------|-----|----|------------|--------------|
|              | NC          | 1                                                                                 | AN   | PWM | 16 | NC         |              |
|              | NC          | 2                                                                                 | RST  | INT | 15 | <b>INT</b> | Interrupt    |
| Enable       | <b>EN</b>   | 3                                                                                 | CS   | RX  | 14 | NC         |              |
|              | NC          | 4                                                                                 | SCK  | TX  | 13 | NC         |              |
|              | NC          | 5                                                                                 | MISO | SCL | 12 | <b>SCL</b> | I2C Clock    |
|              | NC          | 6                                                                                 | MOSI | SDA | 11 | <b>SDA</b> | I2C Data     |
| Power Supply | <b>3.3V</b> | 7                                                                                 | 3.3V | 5V  | 10 | <b>5V</b>  | Power Supply |
| Ground       | <b>GND</b>  | 8                                                                                 | GND  | GND | 9  | <b>GND</b> | Ground       |

## Onboard settings and indicators

| Label | Name    | Default     | Description                                                                |
|-------|---------|-------------|----------------------------------------------------------------------------|
| LD1   | PWR     | -           | Power LED Indicator                                                        |
| JP1   | VCC SEL | Left        | Logic Level Voltage Selection 3V3/5V: Left position 3V3, Right position 5V |
| JP2   | -       | Unpopulated | Bridge Sink Ground Selection                                               |

## Load Cell 4 Click electrical specifications

| Description                 | Min | Typ | Max  | Unit |
|-----------------------------|-----|-----|------|------|
| Supply Voltage              | 2.7 | -   | 5.5  | V    |
| Resolution                  | -   | 14  | -    | bits |
| Operating Temperature Range | -40 | -   | +125 | °C   |

## Software Support

We provide a library for the Load Cell 4 Click on our [LibStock](#) page, as well as a demo application (example), developed using MikroElektronika [compilers](#). The demo can run on all

Mikroe produces entire development toolchains for all major microcontroller architectures.

Committed to excellency, we are dedicated to helping engineers bring the project development up to speed and achieve outstanding results.



ISO 27001: 2013 certification of informational security management system.  
ISO 14001: 2015 certification of environmental management system.  
OHSAS 18001: 2008 certification of occupational health and safety management system.



ISO 9001: 2015 certification of quality management system (QMS).

the main MikroElektronika [development boards](#).

## Library Description

The library covers all the necessary functions to control Load Cell 4 Click board™. Library performs a standard I2C interface communication.

Package can be downloaded/installed directly from NECTO Studio Package Manager(recommended way), downloaded from our LibStock™ or found on mikroE github account.

Key functions:

- void loadcell4\_tare ( loadcell4\_data\_t \*cell\_data ) - Tare the scales function.
- uint8\_t loadcell4\_calibration ( uint16\_t cal\_val, loadcell4\_data\_t \*cell\_data ) - Calibration function.
- float loadcell4\_get\_weight ( loadcell4\_data\_t \*cell\_data ) - Get weight function.

## Examples description

The application is composed of three sections :

- System Initialization - Initializes I2C, set INT pin as input, set CS pin as output and start to write log.
- Application Initialization - Initializes I2C driver and performs the power on. Sets tare the scale, calibrate scale and start measurements.
- Application Task - This is an example that demonstrates the use of the Load Cell 4 Click board™. The Load Cell 4 Click board™ can be used to measure weight, shows the measurement of scales in grams [ g ]. Results are being sent to the Usart Terminal where you can track their changes. All data logs write on USB uart changes for every 4 sec.

Additional Functions :

- void log\_display ( float display\_val ) - Function displays readings as floating point value with two decimal places.

The full application code, and ready to use projects can be found on our [LibStock](#) page.

Other mikroE Libraries used in the example:

- I2C
- UART
- Conversions

## Additional notes and informations

Depending on the development board you are using, you may need [USB UART click](#), [USB UART 2 click](#) or [RS232 click](#) to connect to your PC, for development systems with no UART to USB interface available on the board. The terminal available in all MikroElektronika [compilers](#), or any other terminal application of your choice, can be used to read the message.

Mikroe produces entire development toolchains for all major microcontroller architectures.

Committed to excellency, we are dedicated to helping engineers bring the project development up to speed and achieve outstanding results.



ISO 27001: 2013 certification of informational security management system.  
ISO 14001: 2015 certification of environmental management system.  
OHSAS 18001: 2008 certification of occupational health and safety management system.



ISO 9001: 2015 certification of quality management system (QMS).

## mikroSDK

This Click board™ is supported with [mikroSDK](#) - MikroElektronika Software Development Kit. To ensure proper operation of mikroSDK compliant Click board™ demo applications, mikroSDK should be downloaded from the [LibStock](#) and installed for the compiler you are using.

For more information about mikroSDK, visit the [official page](#).

## Resources

[mikroBUS™](#)

[mikroSDK](#)

[Click board™ Catalog](#)

[Click boards™](#)

## Downloads

[ZSC31014 datasheet](#)

[Load Cell 4 click 2D and 3D files](#)

[Load Cell 4 click schematic](#)

[Load Cell 4 click example on Libstock](#)

Mikroe produces entire development toolchains for all major microcontroller architectures.

Committed to excellency, we are dedicated to helping engineers bring the project development up to speed and achieve outstanding results.



ISO 27001: 2013 certification of informational security management system.  
 ISO 14001: 2015 certification of environmental management system.  
 OHSAS 18001: 2008 certification of occupational health and safety management system.



ISO 9001: 2015 certification of quality management system (QMS).

## X-ON Electronics

Largest Supplier of Electrical and Electronic Components

*Click to view similar products for* [Multiple Function Sensor Development Tools](#) *category:*

*Click to view products by* [MikroElektronika](#) *manufacturer:*

Other Similar products are found below :

[AS7022-EVALKIT](#) [SLG-0150](#) [DK-40609-D](#) [EV\\_ICM-42670-P](#) [MIKROE-5448](#) [KIT-22636](#) [GX-F12A](#) [GX-F12A-P](#) [GX-F15A](#) [GX-F6A](#)  
[GX-F6A-P](#) [GX-F8B](#) [GX-H12A](#) [GX-H12A-P](#) [GX-H6A-P](#) [1093](#) [MIKROE-2455](#) [MIKROE-2458](#) [MIKROE-2507](#) [MIKROE-2508](#) [MIKROE-](#)  
[2516](#) [MIKROE-2529](#) [176](#) [189](#) [1893](#) [ATQT4-XPRO](#) [GP30-DEMO MODULE](#) [910-28015A](#) [GX-F12AI-P](#) [GX-F15A-P](#) [GX-F8A](#) [GX-F8A-P](#)  
[GX-H15A-P](#) [GX-H8A](#) [GX-H8A-P](#) [GX-H15A](#) [SDAWIR01](#) [AAS-AQS-UNO](#) [SDAWIR02](#) [SDAF01](#) [IQS620AEV04-S](#) [SMOD701KITV1](#)  
[DFR0131](#) [DFR0165](#) [DFR0280](#) [SEN0213](#) [SEN0217](#) [SEN0219](#) [SEN0220](#) [SEN0231](#)