

Dwg. No. :H23-1733

承認字號

Issued Date: 2023/5/30

Customer : _____
(客 戶)

Part No. : _____ HBY271M1VTT-1010K
(貴公司料號)

SPECIFICATION FOR APPROVAL

承 認 書

Description :Organic Conductive Polymer Hybrid Aluminum Electrolytic Capacitors
(零 件 名 稱)

Lelon Series : _____ HBY Series
(立 隆 系 列)

Lelon Part No.: _____ HBY271M1VTT-1010K
(立 隆 料 號)

LELON ELECTRONICS CORP.

立隆電子工業股份有限公司

Headquarters

147, Sec. 1, Guoguang Rd., Dali District, Taichung, Taiwan
TEL: +886-4-24181856 FAX: +886-4-24181906

Manufacturing Sites



Lelon Electronics Corp.

147, Sec. 1, Guoguang Rd., Dali District, Taichung, Taiwan
TEL: +886-4-24181856 FAX: +886-4-24181906



Lelon Electronics (Huizhou) Co., Ltd.

Taiyang Industrial Zone, Baihua Town, Huidong County, Huizhou City,
Guangdong, China
TEL: +86-752-8768222 FAX: +86-752-8768199



Lelon Electronics (Suzhou) Co., Ltd.

1220, Zhongshan North Rd., Wujiang Economic and Technological Technological
Development Zone Suzhou City, Jiangsu, China
TEL: +86-512-63457588 FAX: +86-512-63457791

Approval Signatures

貴公司承認印

Approval 核 准	Check 確 認	Design 作 成
		

Please Return One Copy with Your Approval
承認後請寄回本圖一份

Part Numbering System

Product Code Guide – Conductive Polymer Hybrid

HBV series	470μF	±20%	16V	Carrier Tape		10 φ×10L	Pb-free and Coated Case	
HBV	471	M	1C	TR	-	1010		
□□□	□□□	□	□□	□□	□	□□□□	□	
①	②	③	④	⑤	⑥	⑦	⑧	⑨
Series	Capacitance	Capacitance Tolerance	Rated Voltage	Package Type	Terminal	Case size	Lead Wire and Case Type	Supplement Code

① Series:

Series is represented by a three-letter code. When the series name only has two letters, use a hyphen, “-”, to fill the third blank.

② Capacitance:

Capacitance in μF is represented by a three-digit code. The first two digits are significant and the third digit indicates the number of zeros following the significant figure. “R” represents the decimal point for capacitance under 10μF.

Example:

Capacitance	10	47	56	100	220	470	560
Part number	100	470	560	101	221	471	561

③ Tolerance:

K = -10% ~ +10%	M = -20% ~ +20%	V = -10% ~ +20%
-----------------	-----------------	-----------------

④ Rated voltage: Rated voltage in volts (V) is represented by a two-digit code

Rated Voltage (V)	16	20	25	35	50	63	80
Code	1C	1D	1E	1V	1H	1J	1K

⑤ Package:

SMD Type	TR = Reel package TT = Reel package of plastic
Radial Type	BK = Bulk Package SA = Straight Leader Taping CC = Cutting Leader

⑥ Terminal (SMD) / Rubber Type (Radial):

- = Standard product
A = For application 10G (A must be used with automotive control code “K / L” together)
V = Anti-vibration structure

Note: For radial type are used flat rubber bung is the standard design, use a hyphen, “-”.

⑦ Case size:

The first two digits indicate case diameter and the last two digits indicate case length in mm.

SMD Type	φ D×L	6.3×5.8	6.3×7.7	8×10	10×10 10×10.5	10×12.5	10×16.5
	Code	0606	0608	0810	1010	1013	1016
Radial Type	φ D×L	6.3×6	6.3×8	8×10	10×10	10×12	
	Code	0606	0608	0810	1010	1012	

Note: When a case size is required and not shown in the table, please contact with us for further discussion.

⑧ Lead Wire and Coating Type:

None = Pb free wire + coated case (Standard design)	E = Sn-bi wire + coated case
K / L = Automotive control code	

* When a supplement code following a blank digit code of lead wire and case coating type (standard design), use a hyphen, “-”, to fill the blank digit. When the automotive control code is required, please contact with us for further discussion.

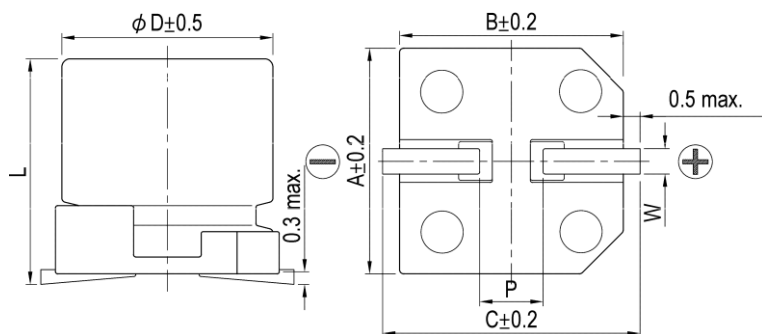
⑨ Supplement code (Optional):

For special control purpose

CUSTOMER :

CUSTOMER P/N: HBY271M1VTT-1010K

PRODUCT DIMENSIONS

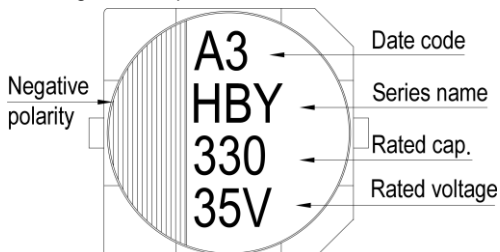


Unit: mm

ϕ D	10
L	10 \pm 0.5
A	10.3
B	10.3
C	11.0
W	0.7~1.3
P	4.7 \pm 0.2

Items	Performance				
Rated Voltage V_R	35 V				
Capacitance C_R	270 μ F (120 Hz, 20 $^{\circ}$ C)				
Category Temperature Range	-55 $^{\circ}$ C ~ +125 $^{\circ}$ C				
Capacitance Tolerance	-20 % ~ +20 % (120 Hz, 20 $^{\circ}$ C)				
Surge Voltage V_S	40.3 V _{DC}				
Leakage Current (20 $^{\circ}$ C)	$I_{LEAK} \leq 94.5 \mu$ A After 2 minutes				
Tan δ	≤ 0.12 (120 Hz, 20 $^{\circ}$ C)				
ESR _{max.}	16 m Ω (100k Hz, 20 $^{\circ}$ C)				
Ripple Current ($I_{AC, R}$ / rms)	3500 mA (100k Hz, 125 $^{\circ}$ C)				
Low Temperature Characteristics at 100k Hz	Impedance ratio	$Z_{(-25^{\circ}C)} / Z_{(+20^{\circ}C)}$	1.5		
		$Z_{(-55^{\circ}C)} / Z_{(+20^{\circ}C)}$	2.0		
Ripple Current (mA) and Frequency Multipliers	Frequency (Hz)	$120 \leq f < 1k$	$1k \leq f < 10k$	$10k \leq f < 100k$	$100k \leq f < 500k$
	Multiplier	0.1	0.3	0.6	1.0
Endurance and Moisture Resistance	Items	Endurance		Shelf Life Test	
	Test Time	4,000 Hrs at 125 $^{\circ}$ C; V_R , $I_{AC, R}$		1,000 Hrs at 125 $^{\circ}$ C	
	Cap. Change	Within ± 30 % of initial value		Within ± 30 % of initial value	
	Tan δ	Less than 200% of specified value		Less than 200% of specified value	
	ESR	Less than 200% of specified value		Less than 200% of specified value	
	Leakage Current*	Within specified value		Within specified value	
	Shelf Life: After storage for 1000 hours at +125 $^{\circ}$ C ± 2 $^{\circ}$ C with no voltage applied and then being stabilized at +20 $^{\circ}$ C (With voltage treatment)				
Vibration	Test frequency range 10 Hz ~ 2 kHz, acceleration max. 5 g's (displacement amplitude max. 1.5 mm) for 20 minutes, 12 cycles each of 3 orientations.				
Standards	AEC-Q200-REV D, IEC 60384-4				
Remarks	RoHS Compliance, Halogen-free				

Marking: Each capacitor shall be marked with the following information.



Marking color: Dark Green

A 3 → January, 2023
The suffix of A. D.
Month of manufacture

Month	1	2	3	4	5	6
Code	A	B	C	D	E	F
Month	7	8	9	10	11	12
Code	G	H	I	J	K	L

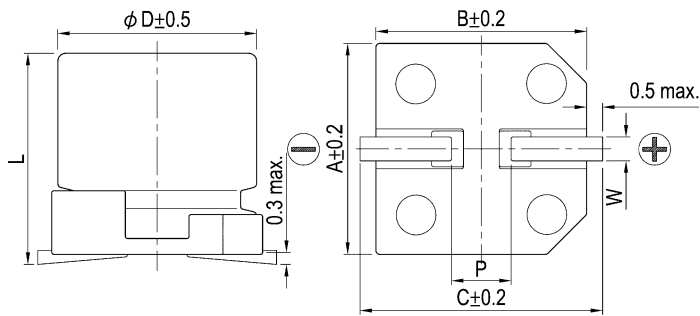
* Please refer to "Precautions and Guidelines for Aluminum Electrolytic Capacitors" section in Lelon's catalog for further details

Publication Date	May 30, 2023	Approval Signatures:	Approved	Checked	Designed
Revision Date			R & D MAY. 30. 2023 H. Y. Huang	R & D MAY. 30. 2023 J.H.Xiong	R & D MAY. 30. 2023 Z. X. Sun
Version No.	1				

Please return one copy with your approval

Diagram of Dimensions:

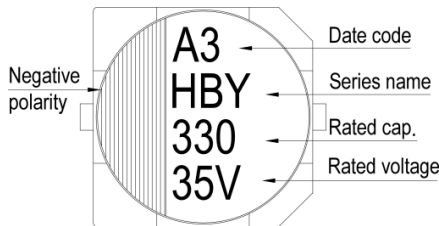
Unit: mm



ϕD	L	A	B	C	W	$P \pm 0.2$
10	10.0 ± 0.5	10.3	10.3	11.0	0.7 ~ 1.3	4.7

Marking:

Each capacitor shall be marked with the following information.



Description of Date Code:

A 3 → January, 2023
The last digit of A. D.
Month of manufacture

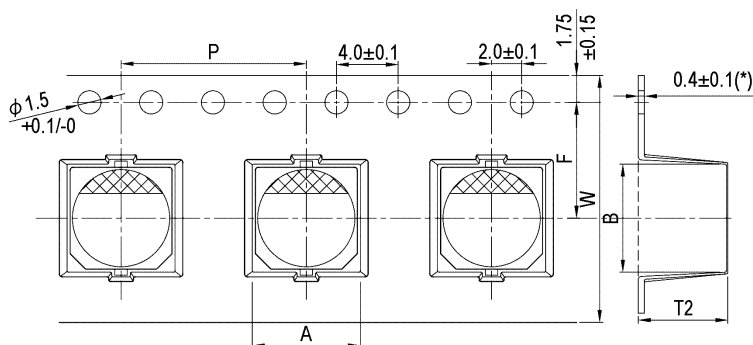
Month	1	2	3	4	5	6
Code	A	B	C	D	E	F
Month	7	8	9	10	11	12
Code	G	H	I	J	K	L

Origin code:
Huizhou: A3, B3, ... , K3, L3
Suzhou: 3A, 3B, ... , 3K, 3L

Marking Color: Dark Green

Taping Specification for SMD Type of OP-CAP

1. Carrier Tape



Unit: mm

ϕ D xL	A	B	F	P	T2	W
5 x 4.4	5.7	5.7	5.5	12	4.8	12.0
5 x 5.7 / 5.8					6.2	
6.3 x 4.4	7.0	7.0	7.5	12	4.8	16.0
6.3 x 5.8 / 5.9					6.2	
6.3 x 6.4					7.2	
6.3 x 7.0					7.6	
6.3 x 7.7					8.3	
6.3 x 9.5*					11.5	16
8 x 6.7	8.7	8.7	7.5	12	7.4	16.0
8 x 7.7			11.5	16	8.4	24.0
8 x10					11.0	
8 x12*	12.5					
10 x 7.7	8.7					
10 x 9.9 / 10	11.0					
10 x12.6 *	10.7	10.7			13.0	
10 x16.5 *					17.5	
Tol.	± 0.2	± 0.2	± 0.1	± 0.1	±0.2	±0.3

Note: The case size in the above table is marked with “*”, which means the marked with “*” in figure is 0.5 mm.

2. Reel Package

Fig. 2-1

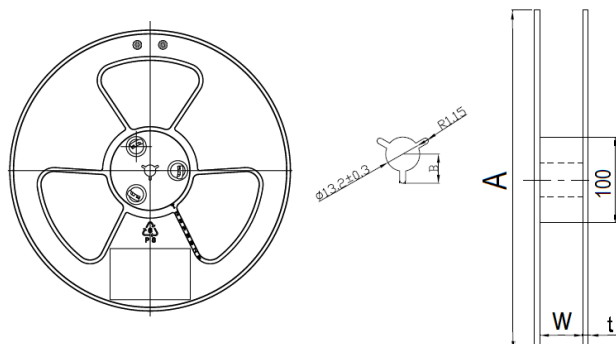
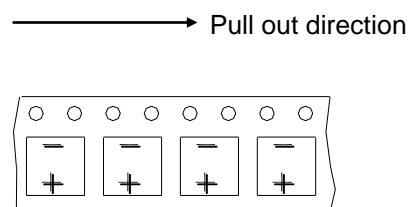


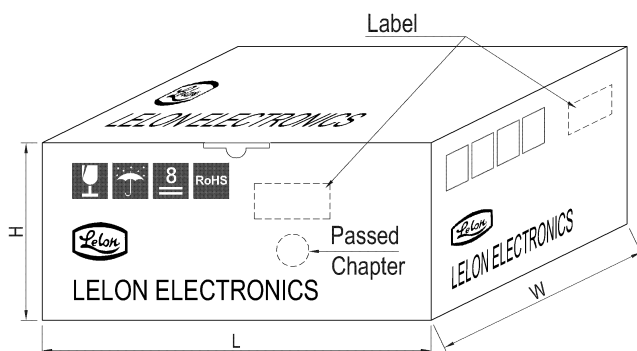
Fig. 2-2 Reel Polarity



Case size	5φ	6.3φ	8φ×6.5 ~ 7L	8φ×10 ~ 12L	10φ
W	12.5	16.5	16.5	24.5	24.5
A	381	381	381	381	381
t	2.1	2.1	2.1	2.1	2.1

3. Packing Specification

3-1 Carrier Tape



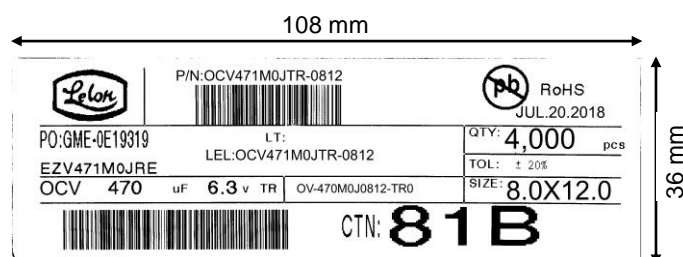
Unit: pcs

Case size	Q'ty / Reel	Q'ty / Box
5 ϕ	1,000	10,000
6.3 ϕ \times 4.4L	1,500	15,000
6.3 ϕ	1,000	10,000
6.3 ϕ \times 9.5L	500	5,000
8 ϕ \times 6.7 ~ 7.7L	1,000	10,000
8 ϕ \times 10L	500	5,000
8 ϕ \times 12L	400	4,000
10 ϕ \times 7.7 ~ 10L	500	5,000
10 ϕ \times 12.6L	400	4,000
10 ϕ \times 16.5L	300	3,000

Unit: mm

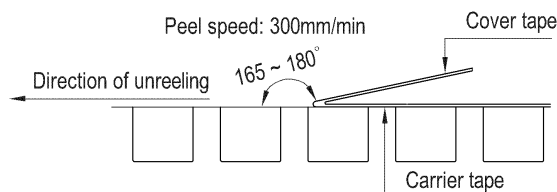
Case size	5 ϕ	6.3 ϕ , 8 ϕ \times 6.7L	8 ϕ \times 7.7 ~ 12L	10 ϕ
H	210	250	330	330
W, L	395			

3-2 Label



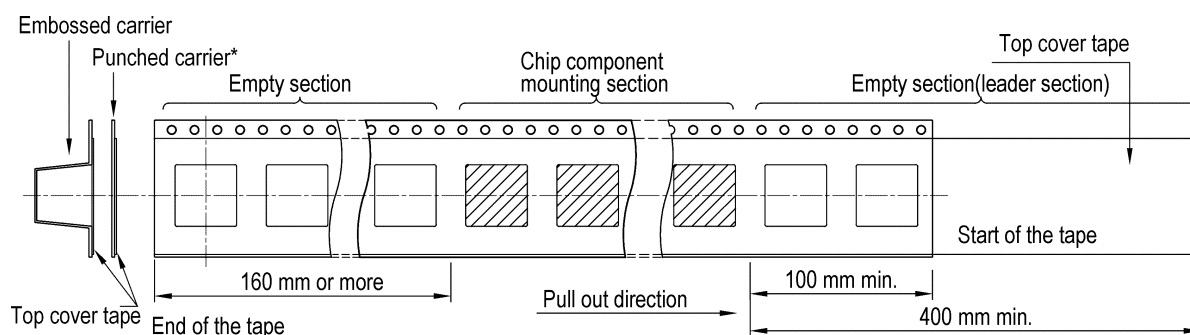
4. Sealing Tape Reel Strength

- 4.1 Peel angle: 165 to 180°C referred to the surface on which the tape is glued.
- 4.2 Peel speed: 300mm per minutes
- 4.3 The peel strength must be 0.1 ~ 0.7N under these conditions.



5. Packing Method

- 5.1 The leader length of the tape shall not be less than 400 mm including 10 or more embossed sections in which no parts are contained.
- 5.2 The winding core is provided with an over 160 mm long empty section; punched carrier is only suitable for $\phi D \leq 5$ mm.

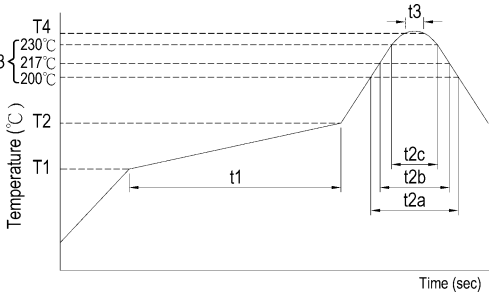
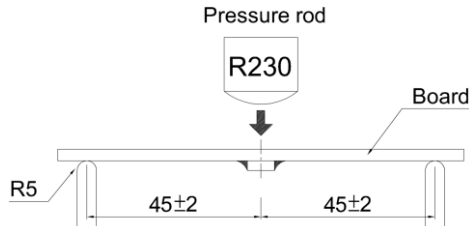


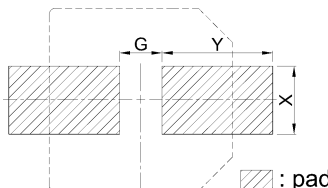
6. Other: Specifications stated above is in accordance with JIS C 0806-3.

Ver. 05

Endurance characteristic:

No.	Item	Conditions	Specification												
1	Rotational Temperature Test	Step1: 125 ± 3℃ (30 minutes) Step2: -55 ± 3℃ (30 minutes) Max. transfer time: 1 minute According to the step 1 to step 2, and do 1,000 cycles.	Capacitance change	Within ± 20% of initial value.											
			Tanδ	Less than 200% of specified value											
			Leakage Current	Within specified value											
			ESR	Less than 200% of specified value											
			Physical	No broken and undamaged											
2	High Temperature Endurance Life	1. Capacitors shall be placed in oven with application of rated ripple current for 4,000 +72 / -0 hours at 125℃. 2. Then the capacitor shall be subjected to standard atmospheric conditions for 4 hours, after which measurements shall be made.	Capacitance change	Within ± 30% of initial value											
			Tanδ	Less than 200% of specified value											
			Leakage Current	Within specified value											
			ESR	Less than 200% of specified value											
			Physical	No broken and undamaged											
3	High Temperature Shelf Life Test	After 1,000 +48 / -0 hours test at 125℃ without rated working voltage. And then the capacitor shall be subjected to standard atmospheric conditions for 4 hours, after which measurements shall be made.	Capacitance change	Within ± 30% of initial value											
			Tanδ	Less than 200% of specified value											
			Leakage Current	Within specified value											
			ESR	Less than 200% of specified value											
			Physical	No broken and undamaged											
4	Un-biased Humidity	Capacitors shall be exposed for 2,000 +48 / -0 hours in an atmosphere of 85% ± 5% R. H. at 85 ± 3℃. And then the capacitor shall be subjected to standard atmospheric conditions for 4 hours, after which measurements shall be made.	Capacitance change	Within ± 30% of initial value.											
			Tanδ	Less than 200% of specified value											
			Leakage Current	Within specified value											
			ESR	Less than 200% of specified value											
			Physical	No broken and undamaged											
5	Vibration Test	Capacitor is placed in the PCB and fixed by glue. Setting the acceleration (5g) and frequency (10 ~ 2,000 Hz) according to the test condition, vibration 4Hrs from three directions (X-Y-Z).	Capacitance change	Within ± 10% of initial value											
			Tanδ	Within specified value											
			Leakage Current	Within specified value											
			ESR	Within specified value											
			Physical	No broken and undamaged											
6	Biased Humidity	Capacitors shall be rated working voltage for 2,000 +48 / -0 hours in an atmosphere of 85% ± 5% R. H. at 85 ± 3℃. And then the capacitor shall be subjected to standard atmospheric conditions for 4 hours, after which measurements shall be made.	Capacitance change	Within ± 30% of initial value.											
			Tanδ	Less than 200% of specified value											
			Leakage Current	Within specified value											
			ESR	Less than 200% of specified value											
			Physical	No broken and undamaged											
7	Surge Voltage Test	The capacitor shall be subjected to 1,000 cycles at 15 ~ 35℃. Protective series resistor a 1KΩ each consisting of a charge period of 30 ± 5 seconds, followed by discharge period of approximately 5.5 minutes. Applying voltage:	Capacitance change	Within ± 20% of initial value.											
			Tanδ	Within specified value											
			Leakage Current	Within specified value											
			ESR	Less than 200% of specified value											
			Physical	No broken and undamaged											
		<table><tr><td>Rated Voltage (V)</td><td>16</td><td>25</td><td>35</td><td>50</td><td>63</td><td>80</td></tr><tr><td>Surge Voltage (V)</td><td>18.4</td><td>28.8</td><td>40.3</td><td>57.5</td><td>72.5</td><td>92.0</td></tr></table>		Rated Voltage (V)	16	25	35	50	63	80	Surge Voltage (V)	18.4	28.8	40.3	57.5
Rated Voltage (V)	16	25	35	50	63	80									
Surge Voltage (V)	18.4	28.8	40.3	57.5	72.5	92.0									

No.	Item	Conditions	Specification																																	
8	Resistance to Soldering Heat Test	<p>IR Reflow</p>  <table border="1" data-bbox="410 479 882 759"><tr><td rowspan="2">Preheat</td><td>Temp. (T1 ~ T2, °C)</td><td colspan="3">150 ~ 180</td></tr><tr><td>Time (t1) (max., secs)</td><td colspan="3">120</td></tr><tr><td rowspan="2">Duration</td><td>Temp. (T3, °C)</td><td>200</td><td>217</td><td>230</td></tr><tr><td>Time (t2) (max., secs)</td><td>t2a</td><td>t2b</td><td>t2c</td></tr><tr><td rowspan="2">Peak</td><td>Temp. (T4, °C)</td><td colspan="2">250</td><td>260</td></tr><tr><td>Time (t3, secs)</td><td colspan="3">5</td></tr><tr><td colspan="2">Reflow cycles</td><td>2</td><td colspan="2">1</td></tr></table> <p>* Please contact our representative if your condition is higher. * Please ensure that the capacitor became cold enough to the room temperature (5°C ~ 35°C) before the second reflow. * Consult with us when performing reflow profile in IPC / JEDEC (J-STD-020)</p>	Preheat	Temp. (T1 ~ T2, °C)	150 ~ 180			Time (t1) (max., secs)	120			Duration	Temp. (T3, °C)	200	217	230	Time (t2) (max., secs)	t2a	t2b	t2c	Peak	Temp. (T4, °C)	250		260	Time (t3, secs)	5			Reflow cycles		2	1		Capacitance change	Within ± 10% of initial value.
				Preheat	Temp. (T1 ~ T2, °C)	150 ~ 180																														
			Time (t1) (max., secs)		120																															
			Duration	Temp. (T3, °C)	200	217	230																													
				Time (t2) (max., secs)	t2a	t2b	t2c																													
			Peak	Temp. (T4, °C)	250		260																													
Time (t3, secs)	5																																			
Reflow cycles		2	1																																	
Tanδ	Within specified value																																			
Leakage Current	Within specified value																																			
ESR	Within specified value																																			
Physical	No broken and undamaged																																			
9	Board Flex Test	<p>Capacitor is placed in the PCB and pressed to deviate from original fulcrum less than 2 mm for 60 (+5) seconds.</p> 	Capacitance change	Within ± 10% of initial value.																																
			Tanδ	Within specified value																																
			Leakage Current	Within specified value																																
			ESR	Within specified value																																
			Physical	No broken and undamaged																																
			10	Terminal Strength Test	<p>Test condition: Capacitor is placed in the PCB by solder paste and do high temperature test (reflow) 2 twice to endurance the power of 1.8 kg for 60 seconds, no dropping condition.</p>	Capacitance change	Within ± 10% of initial value.																													
Tanδ	Within specified value																																			
Leakage Current	Within specified value																																			
Physical	No broken and undamaged																																			
11	Mechanical Shock	<p>Capacitor is placed in the PCB and fixed. Setting the acceleration (100 g) and time (6 ms) according to the test condition, shock 6 times from three directions (X-Y-Z).</p>	Capacitance change	Within ± 10% of initial value.																																
			Tanδ	Within specified value																																
			Leakage Current	Within specified value																																
			ESR	Within specified value																																
			Physical	No broken and undamaged																																
12	Physical Dimension	----	Within specified value																																	
13	Resistance to Solvents	<p>Step 1: Put the capacitor into IPA (25 ± 5°C); Step 2: The dipping time is 3 +0.5 / -0 minutes; Step 3: Brush the capacitor for 10 times; Conduct the steps 1 ~ 3 for 3 cycles.</p>	The print cannot fall off or be obscure																																	
14	Electrical Characterization	<p>Whether there is abnormality about electrical characterization in the test that under the ensurance temperature (the lowest, the highest, atmospheric temperature).</p>	Appearance: No abnormality																																	

No.	Item	Conditions	Specification																						
15	Characteristics at High and Low Temperature	<table><tr><th>Step</th><th>Temperature (℃)</th><th>Measurement</th></tr><tr><td>1</td><td>20 ± 2</td><td>ESR and Imp.</td></tr><tr><td>2</td><td>-25 ± 3, -55 ± 3</td><td>ESR and Imp.</td></tr><tr><td>3</td><td>125 ± 2</td><td>ESR and Imp.</td></tr></table> <p>【Criteria】 Impedance ratio (100k Hz ± 10k Hz) ESR (100k Hz ± 10k Hz)</p>	Step	Temperature (℃)	Measurement	1	20 ± 2	ESR and Imp.	2	-25 ± 3, -55 ± 3	ESR and Imp.	3	125 ± 2	ESR and Imp.	<p>【100k Hz】</p> <table><tr><th>Impedance / ESR</th><th>Ratio</th></tr><tr><td>$Z_{(-25℃)} / Z_{(20℃)}$</td><td>≤ 1.5</td></tr><tr><td>$Z_{(-55℃)} / Z_{(20℃)}$</td><td>≤ 2.0</td></tr><tr><td>$ESR_{(-25℃)} / ESR_{(20℃)}$</td><td>≤ 1.5</td></tr><tr><td>$ESR_{(-55℃)} / ESR_{(20℃)}$</td><td>≤ 2.0</td></tr></table>	Impedance / ESR	Ratio	$Z_{(-25℃)} / Z_{(20℃)}$	≤ 1.5	$Z_{(-55℃)} / Z_{(20℃)}$	≤ 2.0	$ESR_{(-25℃)} / ESR_{(20℃)}$	≤ 1.5	$ESR_{(-55℃)} / ESR_{(20℃)}$	≤ 2.0
Step	Temperature (℃)	Measurement																							
1	20 ± 2	ESR and Imp.																							
2	-25 ± 3, -55 ± 3	ESR and Imp.																							
3	125 ± 2	ESR and Imp.																							
Impedance / ESR	Ratio																								
$Z_{(-25℃)} / Z_{(20℃)}$	≤ 1.5																								
$Z_{(-55℃)} / Z_{(20℃)}$	≤ 2.0																								
$ESR_{(-25℃)} / ESR_{(20℃)}$	≤ 1.5																								
$ESR_{(-55℃)} / ESR_{(20℃)}$	≤ 2.0																								
16	Solderability Test	Test 1: Pre-conditioning: Execution according to RDD0302 (SolderabilityTest Method), item 4.4.2-1 (chart 3) Solder bath temperature: 235 ± 5℃ Duration: 5 +0 / -0.5 seconds Test 2: Pre-conditioning: Execution according to RDD0302 (Solderability Test Methode), item 4.4.2-1 (chart 3) Solder bath temperature: 215 ± 3℃ Duration: 5 +0 / -0.5 seconds Test 3: Pre-conditioning: Execution according to RDD0302 (Solderability Test Methode), item 4.4.2-1 (chart 3) Solder bath temperature: 260 ± 5℃ Duration: 7 ± 0.5 seconds	Sn is more than 95% in the surface of terminal																						
17	Venting Test	1. Applicable to the capacitors with case size is 10 ϕ mm and larger. 2. Test condition: DC test: Applying inverse DC rated voltage with current to the capacitor. Where case diameter: ϕ D ≤ 22.4 mm: 1 A DC max. ϕ D > 22.4 mm: 10 A DC max. Note: (1) When the pressure relief vent operated, the capacitor shall avoid any danger of fire or explosion of capacitor element (terminal and metal foil etc.) or cover. (2) When the pressure relief device does not open with the voltage applied over 30 minutes, the test is considered to be passed.																							
18	Coating Case	The color of coating case will turn light khaki from colorless with long duration in high temperature. Should there is any concern with the color changing of coating case, please consult with us.																							
19	Land Pattern	Recommended pad pattern and size  <p>⊞ : pad</p>	<table><tr><th rowspan="2">Case size</th><th colspan="3">Land size</th></tr><tr><th>G</th><th>Y</th><th>X</th></tr><tr><td>6.3ϕ</td><td>1.9</td><td>3.5</td><td>1.6</td></tr><tr><td>8ϕ</td><td>3.0</td><td>3.5</td><td>2.5</td></tr><tr><td>10ϕ</td><td>4.0</td><td>4.0</td><td>2.5</td></tr></table>	Case size	Land size			G	Y	X	6.3ϕ	1.9	3.5	1.6	8ϕ	3.0	3.5	2.5	10ϕ	4.0	4.0	2.5			
Case size	Land size																								
	G	Y	X																						
6.3ϕ	1.9	3.5	1.6																						
8ϕ	3.0	3.5	2.5																						
10ϕ	4.0	4.0	2.5																						

Precautions and Guidelines for Aluminum Electrolytic Capacitors

1. Guidelines for Circuit Design (General / Application guidelines for using electrolytic capacitors)

Selecting of a right capacitor is a key to a good circuit design.

(1) Polarity

Most of the aluminum electrolytic capacitors are polarized. Therefore, they must be installed with the correct polarity. Usage in the reverse polarity results into a short-circuit condition that may damage or even explode the capacitor. In addition, it may influence circuit functionality. A bi-polar electrolytic capacitor should be installed when polarity across a capacitor is unstable / reversible. It should be, however, noted that usage of both polar and bi-polar capacitors are limited to DC applications. They must NOT be used for AC application.

(2) Operating Voltage

Applied DC voltage must not exceed rated voltage of the capacitor. Applying higher voltage than its rated voltage across a capacitor terminals cause overheating due to higher leakage currents and capacitor dielectric/insulation deterioration that will ultimately affect a capacitor's performance. The device, however, is capable of working under short-time transient voltages such as DC transients and peak AC ripples. Reverse voltages higher than 1 Volt within a specified temperature limit or AC voltages are not permissible. Overall, using capacitors at recommended operating voltages can prolong its lifespan. Note that the result of DC voltage overlapped with peak ripple voltage should not exceed rated voltage.

(3) Ripple Current

One of the key functions of any capacitor is removal of the ripple current i.e. the RMS value of AC flowing through a capacitor. But, a ripple current higher than rated ripple current will drop resultant capacitance, cause undue internal heating and thus reduces life span of the capacitor. In extreme cases, internal high temperature will cause the pressure relief vent to operate while destroying the device. Overall, it is important to note that an electrolytic capacitor must be used within a permissible range of ripple current. Indicators like temperature coefficient of allowable ripple current are generally used to determine life expectancy of the capacitor, but to avoid related complex calculations and for the sake of simplicity, we haven't provided temperature coefficient in the catalogue. But it offers key indicators like maximum operating temperature for calculation of life expectancy at a given temperature.

(4) Operating Temperature

Capacitors should be used within a permissible range of operating temperatures. Using capacitor at a higher temperature than maximum rated temperature will considerably shorten its life. In the worst-case scenario, high temperature can cause pressure relief vent to operate and the device will get destroyed. Using capacitors at an ambient room temperature assure their longer life.

(5) Leakage Current

Leakage current flows through a capacitor when DC voltage is applied across it. Leakage current varies with changes in ambient temperature and applied DC voltage level and its time of application. Overvoltage situation, presence of moisture, and thermal stresses, especially occurring during the soldering process can enhance leakage current. Initial leakage current is usually higher and does not decrease until voltage is applied for a certain period of time. It is recommended to keep initial leakage current within specified levels.

(6) Charge and Discharge

Regular electrolytic capacitors are not suitable for rapid charging/discharging circuits. Such usage may either cause reduction in overall capacitance or damage due to overheating. Lelon provides special assistance for selecting appropriate capacitors for rapid charging/discharging circuits.

(7) Surge Voltage

The Surge voltage rating is referred as the maximum DC overvoltage that may be applied to an electrolytic capacitor for a short time interval of 30 seconds at infrequent time intervals not exceeding 5.5 minutes with a limiting resistance of 1kΩ. Unless otherwise described on the catalogue or product specifications, please do not apply a voltage exceeding the capacitor's voltage rating. The rated surge voltages corresponding to rated voltages of electrolytic capacitors are presented as follows:

Rated Voltage(V)	4	6.3	10	16	25	35	50
Surge Voltage(V)	4.6	7.3	11.5	18.4	28.8	40.3	57.5

Rated Voltage(V)	63	80	100	160	200	250	315
Surge Voltage(V)	72.5	92	115	184	230	288	347

Rated Voltage(V)	350	400	420	450	500	525
Surge Voltage(V)	385	440	462	495	550	578

(8) Condition of Use

The capacitors shall NOT be exposed to:

- Fluids including water, saltwater spray, oil, fumes, highly humid or condensed climates, etc.
- Ambient conditions containing hazardous gases/fumes like hydrogen sulfide, sulfurous acid, nitrous acid, chlorine or bromine gas, ammonia, etc.
- Exposed to ozone, ultraviolet rays and radiation.
- Severe vibrations or physical shocks that exceeds the specifications mentioned in this catalogue.

(9) Circuit Design Consideration

- Please ensure whether application, operating and mounting conditions satisfy the conditions specified in the catalog before installation of a capacitor. Please consult Lelon, if any of the conditions are beyond the conditions specified in the catalog.
- Heat-generating components or heat sinks should not be placed closer to Aluminum electrolytic capacitors on the PCB to avoid their premature failure. A cooling system is recommended to improve their reliable working.
- Electrical characteristics and performance of aluminum electrolytic capacitors are affected by variation of applied voltage, ripple current, ripple frequency and operating temperature. Therefore, these parameters shall not exceed specified values in the catalog.
- Aluminum capacitors may be connected in the parallel fashion for increasing total capacitance and/or for achieving higher ripple current capability. But, such design may cause unequal current flow through each of the capacitors due to differences in their impedances.
- When two or more capacitors are connected in series, voltage across each capacitor may differ and fall below the applied voltage. A resistor should be placed across each capacitor so as to match applied voltage with voltage across a capacitor.
- Please consult Lelon while selecting a capacitor for high-frequency switching circuit or a circuit that undergoes rapid charging/ discharging
- Standard outer sleeve of the capacitor is not a perfect electrical insulator therefore is unsuitable for the applications that requires perfect electrical insulation. Please consult Lelon, if your application requires perfect electrical insulation.
- Tilting or twisting capacitor body is not recommended once it is soldered to the PCB.

2. Caution for Assembling Capacitors

(1) Mounting

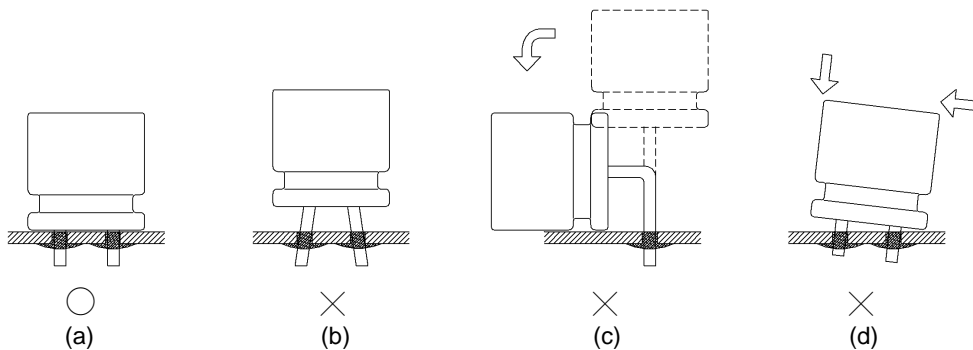
- Aluminum electrolytic capacitors are not recommended to re-use in other circuits once they are mounted and powered in a circuit.

- (b) Aluminum electrolytic capacitors may hold static charge between its anode and cathode, which is recommended to be discharged through a 1k Ω resistor before re-use.
- (c) A long storage of capacitors may result into its insulation deterioration. This can lead to a high leakage current when voltage is applied that may damage the capacitor. Capacitors following a long storage period must undergo voltage treatment/re-forming.
- Capacitors are charged by applying rated DC voltage through a resistor of 1k Ω in series at least for an hour. It is recommended to increase applied voltage gradually using a voltage regulator unit once capacitors are assembled on the board. The charging should be followed by discharging through a 1K Ω resistor.
- (d) Please check capacitor rated voltage before mounting.
- (e) Please check capacitor polarity before mounting.
- (f) Please don't drop capacitor on the floor / hard object.
- (g) Please don't deform the capacitor during installation.
- (h) Please confirm whether the lead spacing of the capacitors match with its pad spacing / footprint on PCB prior to installation.
- (i) Please avoid excessive mechanical shocks to capacitor during the auto-insertion process, inspection or centering operations.
- (j) Please don't place any wiring or circuit over the capacitor's pressure relief vent. The pressure relief vent may fail to open if adequate clearance space is not provided. Following table shows minimum clearance space required for different case diameters.

Case Diameter	$\phi 6.3 \sim \phi 16$	$\phi 18 \sim \phi 35$	$\phi 40$ or above
Clearance (min)	2 mm	3 mm	5 mm

(2) Soldering

- (a) Please confirm that soldering conditions, especially temperature and contact time are within our specifications. Dip or flow preheat temperature is 150°C with 120 seconds (max.), the soldering temperature should be limited at 260 \pm 5°C for 10 \pm 1 sec while manual soldering using soldering iron should be limited at 350 \pm 5°C for 3 +1/-0 seconds. Please do not dip capacitor body into molten solder. A capacitor's life will be negatively affected if these conditions are violated.
- (b) Storage of capacitors in *high humidity* conditions is likely to affect the solder-ability of lead wires and terminals.



3. Maintenance Inspection

Periodical inspection of aluminum capacitors is absolutely necessary, especially when they are used with industrial equipment. The following items should be checked:

- (1) Appearance: Bloated, vent operated, leaked, etc.
- (2) Electrical characteristic: Capacitance, Tan δ , leakage current, and other specified items listed in specification.

Lelon recommend replacing the capacitors if any of the abovementioned items fail to meet specifications.

- (c) **Reflow soldering should ONLY be used for SMD type capacitors.** The temperature and duration shall not exceed the specified temperature and duration in the specification. If the temperature or duration is higher than the value specified, please consult Lelon before usage.
- (d) Standard aluminum electrolytic capacitors are not designed to withstand multiple reflow processes. Please consult Lelon if repeated reflowing is unavoidable.
- (e) Incorrect mounting on PCB with improper external strength applied on its lead wires or capacitor body after soldering may damage a capacitor's internal structure, cause short circuit, or lead to high leakage current issues. Do not bend or twist the capacitor body after soldering. Referring to the drawings below only case (i) is recommended.
- (i) Correct soldering
 - (ii) Hole-to-hole spacing on PCB differs from the lead space of lead wires.
 - (iii) Lead wires are bent after soldering.
 - (iv) Capacitor body doesn't stand vertical on PCB after soldering.

(3) Cleaning Circuit Boards after Soldering

- (a) Following chemicals are not recommended for cleaning: Solvent containing halogen ions, Alkaline solvent, Xylene, Acetone, Terpene, petro-based solvent.
- (b) Recommended cleaning conditions: Fatty-alcohol - Pine Alpha ST-100S, Clean Through-750H and IPA (isopropyl alcohol) are examples of the most acceptable cleaning agents. Temperature of the cleaning agent must not exceed 60°C. Flux content in the cleaning agents should be limited to 2 Wt. %. Overall length of cleaning process (e.g., immersion, ultrasonic or other) shall be within 5 minutes (5 ~ 7mm height within 3 minutes). CFC substitute cleaning agents such as AK225AES can also be used for cleaning. In this case, its temperature shall not exceed 40 C and cleaning process (e.g., immersion, ultrasonic or other) shall be completed within 2 ~ 3 minutes. After cleaning capacitors should be dried with hot air for at least 10 minutes along with the PCB. Temperature of hot air shall not exceed maximum category temperature of the capacitor. Insufficient drying may cause appearance defects, sleeve shrinkage, and bottom-plate bulging. However, usage of this CFC substitute must completely regulated for protection of environment.

4. Storage

- (1) The most suitable conditions for aluminum capacitor storage are 5 °C ~ 35°C and indoor relative humidity less than 75%. High temperature and/or humidity storage is detrimental to the capacitors.
- (2) Capacitors shall not be stored in wet or damp atmospheres containing water, brine, fumes or oil.
- (3) Capacitors storage area shall neither be exposed to hazardous gases such as hydrogen sulfide, sulfurous acid, nitrous acid, chlorine, ammonium, etc. nor to acidic or alkaline solutions.
- (4) Capacitors shall not be exposed to ozone, ultraviolet rays or radiation.

5. Estimation of life time

$$L_r = L_0 \times 2^{\frac{T_{0\max} - T_{r\max}}{10}}$$

L_r : Estimated lifetime (hours)

L_0 : Base lifetime specified at maximum operating temperature with applied the DC voltage and the ripple current (hours)

$T_{0\max}$: The core temperature that rated ripple current applied at maximum operating temperature.

$T_{r\max}$: The core temperature that applied actual ripple current at ambient temperature.

6. Disposal

Please consult with a local industrial waste disposal specialist when disposing of aluminum electrolytic capacitors

7. Environmental Consideration

Lelon already have received ISO 14000 certificate. Cadmium (Cd), Lead (Pb), Mercury (Hg), Hexavalent Chromium (Cr⁺⁶), PBB, PBDE, DEHP, BBP, DBP and DIBP have never been using in capacitor. If you need "Halogen-free" products, please consult with us.

8. AEC-Q200 Compliance

Automotive Electronics Counsel (AEC) has established various electronic component qualification/reliability standards in order to serve automotive electronics industry. AEC-Q200 standard is dedicated for passive components like capacitors, inductors, etc. and is widely adopted domestically as well as internationally. Lelon offers compliant product designs and support services to satisfy customers' product requirements, including the AEC-Q200 required criteria of the reliability tests. Lelon's capacitors are professionally designed to outperform all requirements of AEC-Q200.

For further details, please refer to

IEC 60384-4- Fixed capacitors for use in electronic equipment – Part 4: Sectional specification – Aluminium electrolytic capacitors with solid (MnO₂) and non-solid electrolyte (Established in January 1995, Revised in March 2007), and

EIAJ RCR-2367B- Guideline of notabilia for fixed aluminium electrolytic capacitors for use in electronic equipment [Technical Standardization Committee on Passive Components (Established in March 1995, Revised in March 2002)].

X-ON Electronics

Largest Supplier of Electrical and Electronic Components

Click to view similar products for [Lelon](#) manufacturer:

Other Similar products are found below :

[REA222M1CSA-1320](#) [VE-471M1VTR-1313](#) [VZH-100M1JTR-0606](#) [OCV470M1DTR-0807](#) [OVZ151M1CTR-0807](#) [VE-102M1CTR-1313](#)
[RGA222M1VBK-1625](#) [OCV152M0ETR-1013](#) [VE-330M1HTR-0806](#) [VZH-102M1ETR-1316](#) [VZH-151M1KTR-1313](#) [VEJ-221M1JTR-1313](#)
[VZH100M1KTR-1010](#) [RGA471M1JSA-1320G](#) [SJA4R7M1HBK-0507](#) [VZH221M1CTR-0806L](#) [RXC100M2GBK-1020](#) [RXQ220M2WBK-1620](#) [RGA102M1CBK-1016](#) [VE-101M1CTR-0806](#) [RXQ470M2WBK-1625](#) [RXW222M1EBK-1625](#) [RZW152M1JBK-1836](#)
[RGA820M2GBK-1632G](#) [OVZ390M1CTR-0606](#) [OVZ181M1CTR-1008](#) [OCV221M0JTR-1008](#) [HBS221M1VCC-0812](#) [VZH152M1CTR-1313](#)
[SY8-0J476K-RA](#) [SY7-1A226K-RA](#) [SY8-1A336M-RA](#) [RXW470M1ABK-0511](#) [RXW222M1HBK-1836](#) [RGA222M1JBK-1836G](#)
[RGA470M2ABK-1012](#) [OVZ181M1DTR-0807](#) [RXW471M1ESA-0815](#) [RXQ470M2WBK-1825](#) [VEJ331M1HTR-1313L](#) [RGA220M2WSA-1320G](#) [VE-330M2ETR-1316](#) [RGA102M2ABK-1840G](#) [RZW331M1JBK-1320](#) [SG-101M1ASA-0607](#) [RGA221M1ECC-0811G](#)
[SEA221M1VBK-1009](#) [RXQ100M2WBKF1016-H](#) [HBV470M1VTR-0606](#) [OVK331M1ATR-1008](#)