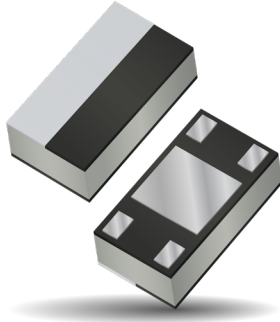


# Thin-Film RF/Microwave Filters

## BP1206 Thin Film Band Pass Filter

### BP1206A27G9ANTR



#### ITF TECHNOLOGY

The ITF LGA Filter is based on thin-film multilayer technology. The technology provides a miniature part with excellent high frequency performance and rugged construction for reliable automatic assembly.

The ITF Filter is offered in a variety of frequency bands compatible with various types of high frequency wireless systems.

#### FEATURES

- Small size: 1206
- Band: 27.5 – 28.35 GHz
- Characteristic impedance: 50Ω
- Operating / Storage temp: -40°C ÷ 85°C
- Low profile
- RoHS compliant

#### APPLICATIONS

- 5G mmWave applications
- Base Stations
- Mobile communications
- Factory and Process automation
- Autonomous driving, in-car infotainment
- AR/VR, Multi- broadcasting
- Smart home

#### HOW TO ORDER

BP	1206	A	27G9	A	N	TR
Series	Case Size	Type	Frequency (MHz)	Sub-Type	Termination	Taped & Reeled

#### FINAL QUALITY INSPECTION

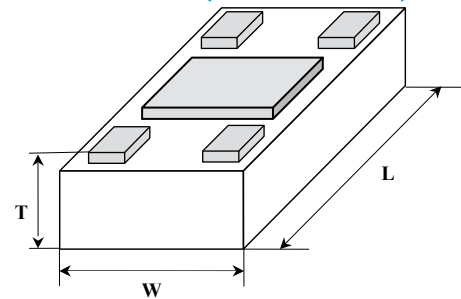
Finished parts are 100% tested for electrical parameters and visual/ mechanical characteristics. Each production lot is evaluated on a sample basis for:

- Static Humidity: 85°C, 85% RH, 160 hours
- Endurance : 125°C, IR, 4 hours

#### TERMINATION

Nickel/ Lead freeSolder coating (Sn100) compatible with automatic soldering technologies: reflow, wave soldering, vapor phase and manual.

#### DIMENSIONS (BOTTOM VIEW)

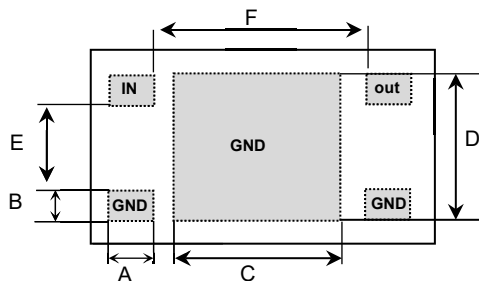


#### mm (inches)

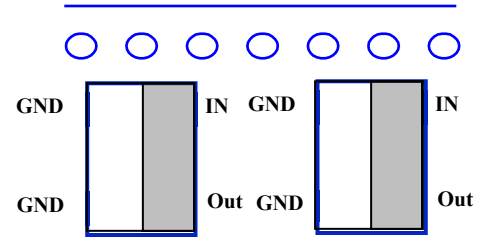
L	3.1±0.1
W	1.60±0.1
T	0.45±0.1
A	0.32±0.1

B	0.21±0.1
C	1.92±0.1
D	1.36±0.1
E	0.945±0.1
F	2.225±0.1

#### TERMINALS (TOP VIEW)



#### ORIENTATION IN TAPE ( (TOP VIEW)



Thin-Film RF/Microwave Filters

BP1206 Thin Film Band Pass Filter

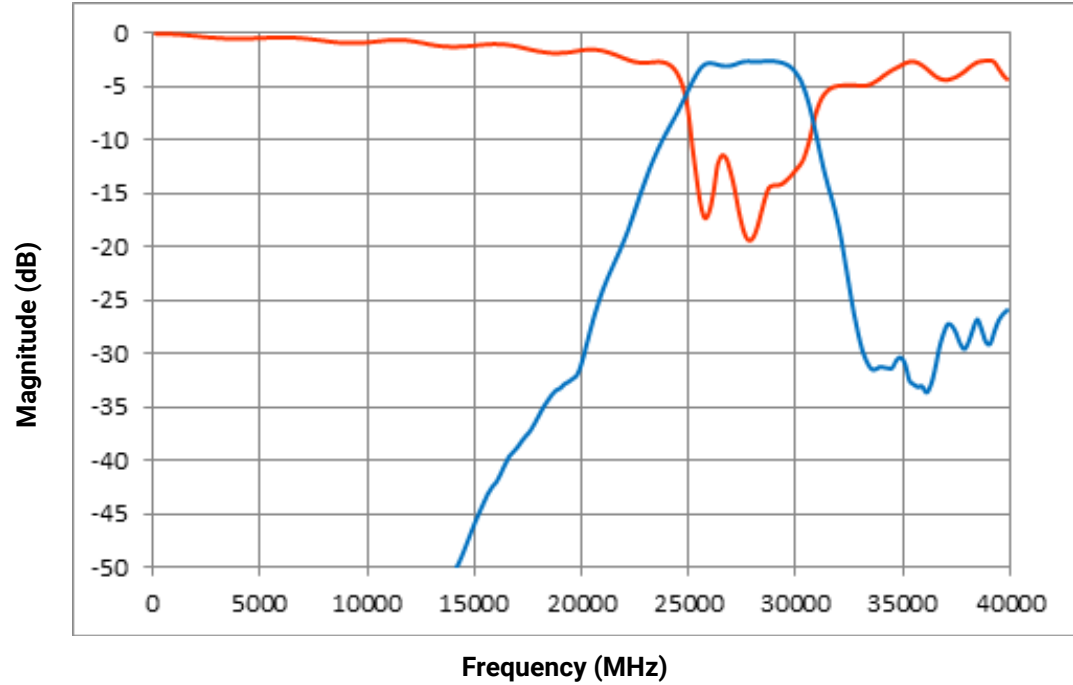
BP1206A27G9ANTR



ELECTRICAL CHARACTERISTICS

Description	Value
Center frequency	27.925 GHz
Impedance	50 ohm
I. loss 27.5- 28.35 GHz	-2.5 dB
In-band return loss	-12 dB
Rejection in DC-20 GHz	-30 dB
Rejection in [35-40] GHz	-25 dB
Power handling (CW)	8 Watt
Operating temperature range	-40/+85 °C
Package	LGA, standard 1206 size

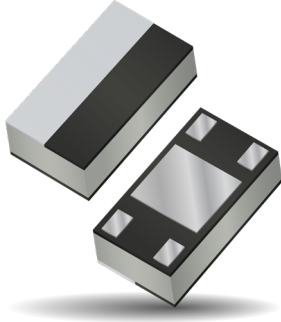
TYPICAL ELECTRICAL PERFORMANCE



# Thin-Film RF/Microwave Filters

## BP1206 Thin Film Band Pass Filter

### BP1206A28G0ANTR



#### ITF TECHNOLOGY

The ITF LGA Filter is based on thin-film multilayer technology. The technology provides a miniature part with excellent high frequency performance and rugged construction for reliable automatic assembly.

The ITF Filter is offered in a variety of frequency bands compatible with various types of high frequency wireless systems.

#### FEATURES

- Small size: 1206
- Band: 27.5 – 28.35 GHz
- Characteristic impedance: 50Ω
- Operating / Storage temp: -40°C ÷ 85°C
- Low profile
- RoHS compliant

#### APPLICATIONS

- 5G mmWave applications
- Base Stations
- Mobile communications
- Factory and Process automation
- Autonomous driving, in-car infotainment
- AR/VR, Multi- broadcasting
- Smart home

#### HOW TO ORDER

BP	1206	A	28G0	A	N	TR
Series	Case Size	Type	Frequency (MHz)	Sub-Type	Termination	Taped & Reeled

#### FINAL QUALITY INSPECTION

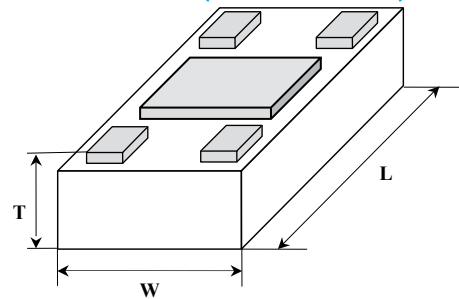
Finished parts are 100% tested for electrical parameters and visual/ mechanical characteristics. Each production lot is evaluated on a sample basis for:

- Static Humidity: 85°C, 85% RH, 160 hours
- Endurance : 125°C, IR, 4 hours

#### TERMINATION

Nickel/ Lead freeSolder coating (Sn100) compatible with automatic soldering technologies: reflow, wave soldering, vapor phase and manual.

#### DIMENSIONS (BOTTOM VIEW)

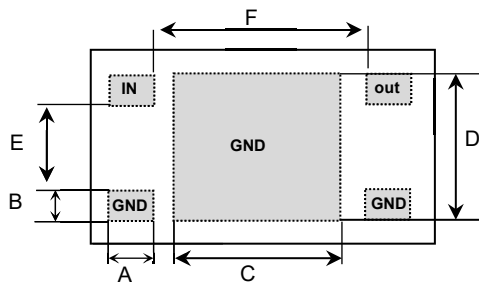


#### mm (inches)

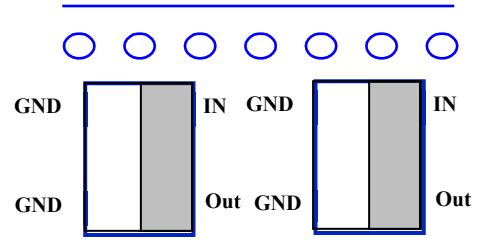
L	3.1±0.1
W	1.60±0.1
T	0.45±0.1
A	0.32±0.1

B	0.21±0.1
C	1.92±0.1
D	1.36±0.1
E	0.945±0.1
F	2.225±0.1

#### TERMINALS (TOP VIEW)



#### ORIENTATION IN TAPE ( (TOP VIEW)



Thin-Film RF/Microwave Filters

BP1206 Thin Film Band Pass Filter

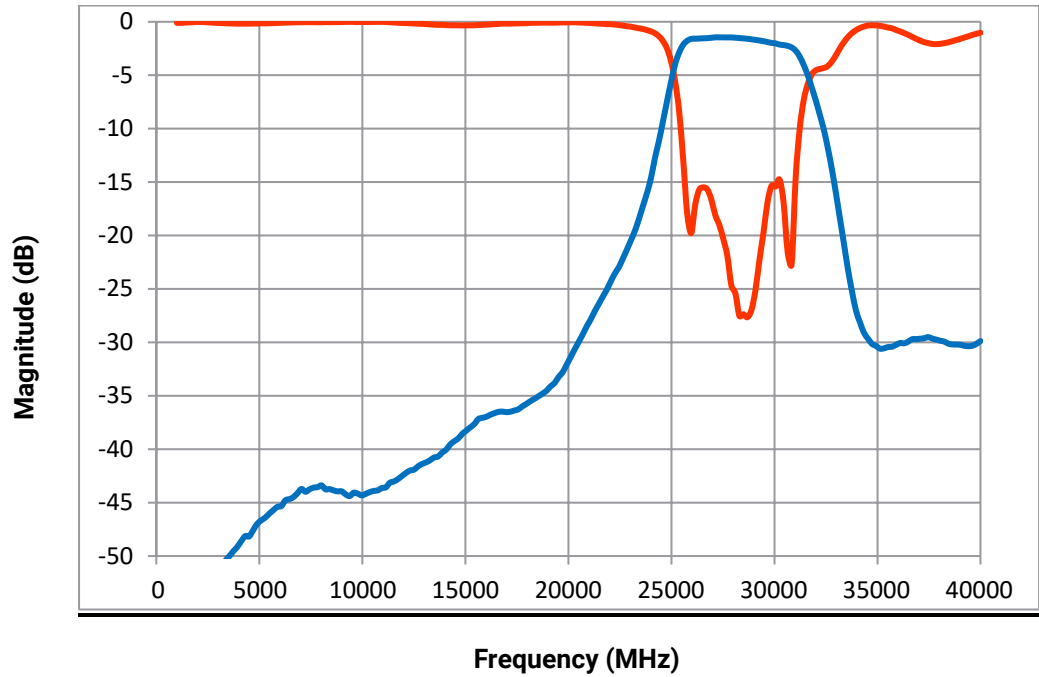
BP1206A28G0ANTR



ELECTRICAL CHARACTERISTICS

Description	Value
Center frequency	28.0 GHz
Impedance	50 ohm
I. loss 27.5- 28.35 GHz	-2.5 dB
In-band return loss	-15 dB
Rejection in DC-20 GHz	-30 dB
Rejection in [35-40] GHz	-25 dB
Power handling (CW)	8 Watt
Operating temperature range	-40/+85 °C
Package	LGA, standard 1206 size

TYPICAL ELECTRICAL PERFORMANCE



## X-ON Electronics

Largest Supplier of Electrical and Electronic Components

*Click to view similar products for [Signal Conditioning](#) category:*

*Click to view products by [Kyocera AVX](#) manufacturer:*

Other Similar products are found below :

[0400LP15A0122E](#) [0433BM15A0001E](#) [0433BM41A0019E](#) [0500LP15A500E](#) [051157-0000](#) [071788](#) [071938](#) [072174](#) [0868BM15C0001E](#)  
[0868BM15G0027E](#) [0868LP15A020E](#) [0892DP14A1850T](#) [0896BM15A0001E](#) [0896BM15A0032E](#) [0896BM15E0025E](#) [0896FB15A0100E](#)  
[0898CP14C0035001T](#) [0900BL15C050E](#) [0900BL18B100E](#) [0900BL18B200E](#) [0900DP15A2450E](#) [0900FM15D0039E](#) [0900LP15B0063E](#)  
[0900PC15A0036E](#) [0900PC15J0013E](#) [0910CF15B0100E](#) [0915BM15A0001E](#) [0915LP15B026E](#) [11302-20](#) [11302-3](#) [11303-3](#) [11305-10](#) [11305-20](#) [11305-3S](#) [11306-3S](#) [1176000000](#) [1200BP44A575E](#) [1481970000](#) [1575CH15A0030E](#) [1600BL15B050E](#) [1600BL15B100E](#)  
[1720BL15A0100E](#) [1720BL15B0200E](#) [1748LP18A075E](#) [1810BP07B200T](#) [1850BL15B050E](#) [1850BL15B100E](#) [1850BL15B200E](#)  
[1905BP18A0050E](#) [1E1305-3](#)