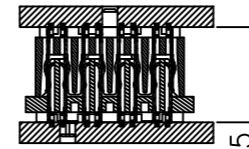
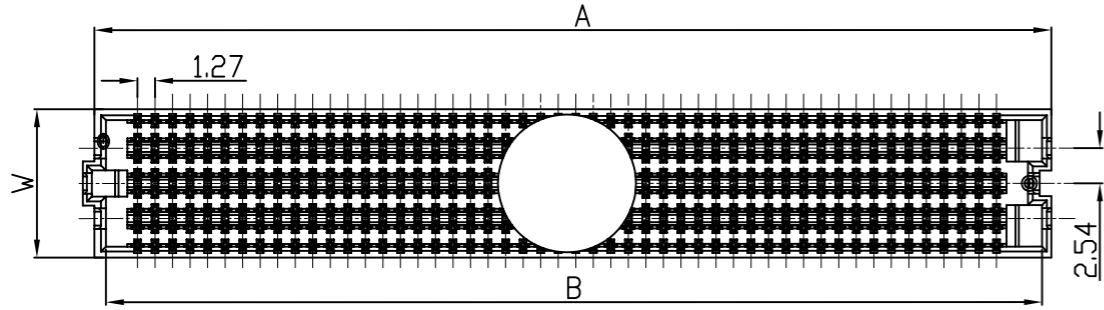
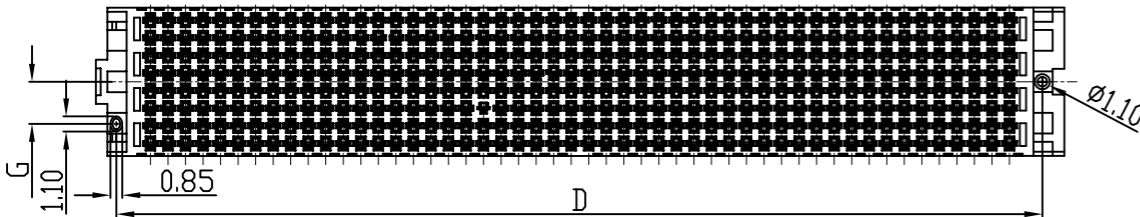
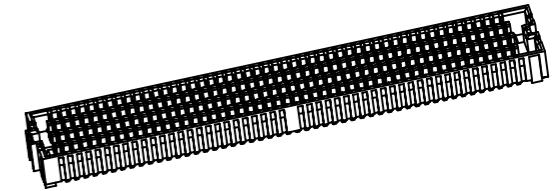
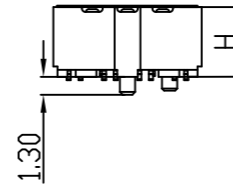
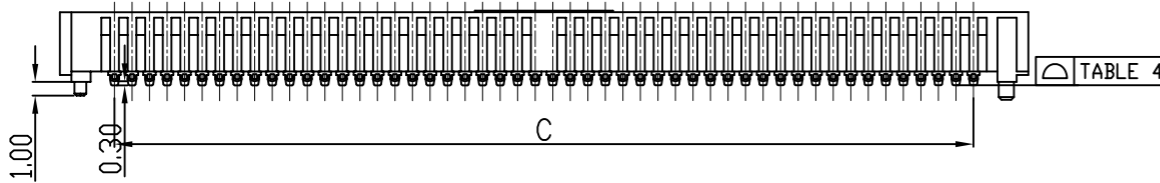


# Engineer Drawing



### SPECIFICATIONS

- 1.CURRENT RATING: 1.0A
- 2.VOLTAGE RATING 240VAC
- 3.OPERATING TEMPERATURE RANGE:-55°C TO +125°C
- 4.OPERATING HUMIDITY RANGE:90% TO 95%.
- 5.WITHSTANDING VOLTAGE:700V AC/MINUTE.



**IPC B 1A 50 1 F XX X X X**

- ① ② ③ ④ ⑤ ⑥ ⑦ ⑧ ⑨

- ① Series Type
- ② Pitch: 1.27mm
- ③ Height
- ④ Internal Code
- ⑤ Connector Type
- ⑥ Pin Code: See Table 6 (No. of Contacts: ≥100)
- ⑦ Rows Code
- ⑧ Serial Code
- ⑨ Other Code

ROWS	W	G
4	5.66	2.01
5 OR 6	8.20	3.05
8	10.74	3.05
10	13.28	3.05
12	15.82	3.05
14	18.36	3.05

POSITION	COPLANARITY
10 PIN	0.15
30 PIN	0.20
40 PIN	0.23
50 PIN	0.23

	5.0	6.0	6.5	7.5
2.0	7.00	8.00	8.50	9.50
3.0	8.00	9.00	9.50	10.50
3.5	8.50	9.50	10.00	11.00
5.5	NA	NA	12.00	NA

No OF ROWS	A	B	C	D
10	18.52	17.02	11.43	16.28
15	24.87	23.37	17.78	22.63
19	29.95	28.45	22.86	27.71
20	31.22	29.72	24.13	28.98
25	37.57	36.07	30.13	35.33
30	43.92	42.42	36.83	41.68
40	56.62	55.12	49.53	54.38
50	69.32	67.82	62.23	67.08

Pin Code	No. of Contacts	Pin Code	No. of Contacts	Pin Code	No. of Contacts
A0	100	H0	170	P0	240
B0	110	I0	180	Q0	250
C0	120	J0	190	R0	260
D0	130	K0	200	S0	270
E0	140	L0	210	T0	280
F0	150	N0	220	U0	290
G0	160	M0	230	V0	300

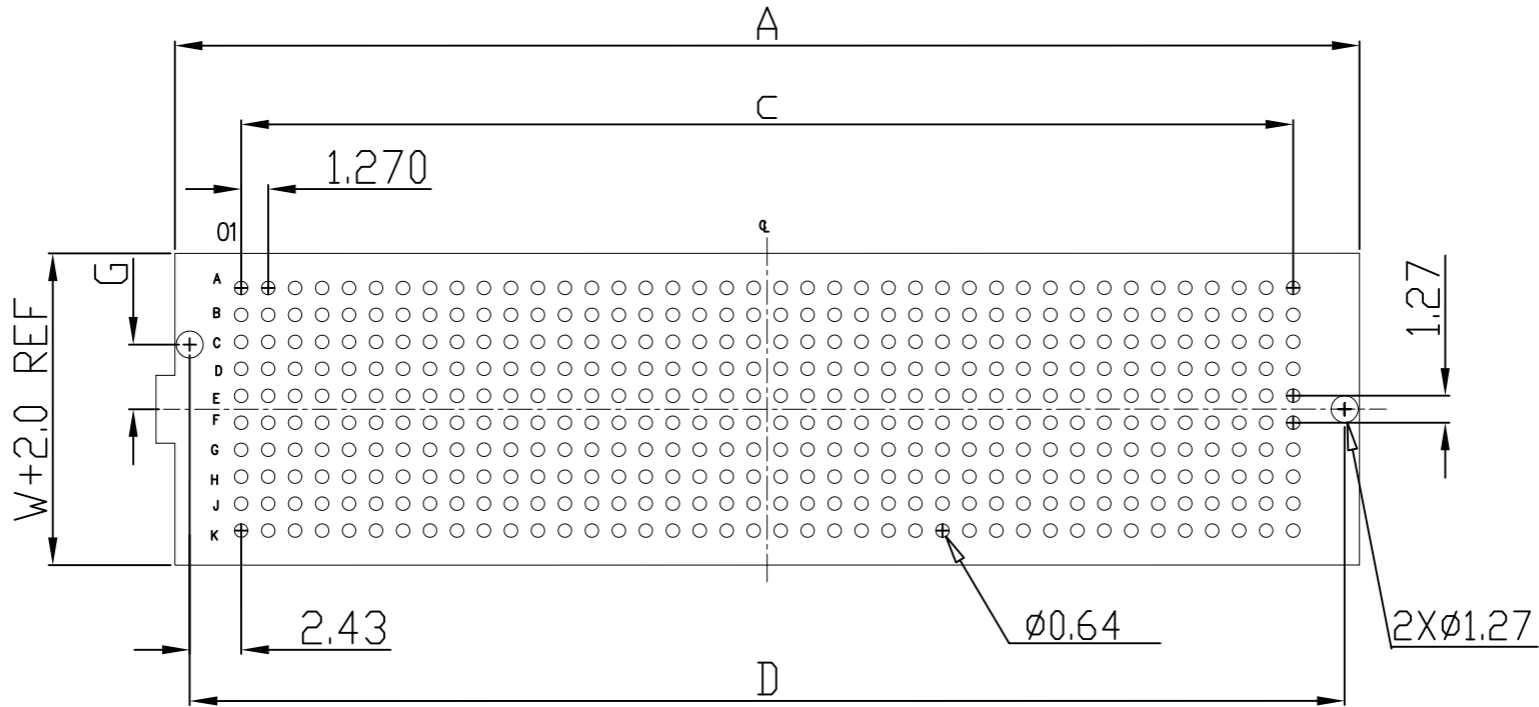
HEIGHT	H
5.0	5.05
6.0	6.05
6.5	6.55
7.5	7.54





TOLERANCES:  
 X.X=±0.35  
 X.XX=±0.25  
 X.XXX=±0.10  
 GENERAL ANGLE  
 X°=±1°

		<a href="http://www.i-ncp.com">www.i-ncp.com</a>	
PART NO: IPC B1A501Fxx 7V		NAME: 1.27PH H5.0 BTB FEMALE	
DRAWING NO IPC B1A501F07V			
SHEET 1 OF 2		UNITS:mm SCALE:1:1 REV.02	

# Engineer Drawing



Recommended PC board pattern  
(TOP VIEW)

<p>TOLERANCES:  X.X=±0.35  X.XX=±0.25  X.XXX=±0.10  GENERAL ANGLE  X°=±1°</p>		<a href="http://www.i-ncp.com">www.i-ncp.com</a>
	PART NO: IPCB1A501Fxx 7V	NAME: 1.27PH H5.0 BTB FEMALE
	DRAWING NO IPCB1A501F07V	
 SHEET 2 OF 2		UNITS:mm SCALE:1:1 REV.02

## X-ON Electronics

Largest Supplier of Electrical and Electronic Components

*Click to view similar products for [Board to Board & Mezzanine Connectors](#) category:*

*Click to view products by [INCP](#) manufacturer:*

Other Similar products are found below :

[589158040000018](#) [MDF7C-18P-2.54DSA\(55\)](#) [FCN-268F036-G/BD](#) [FCN-268M012-G/0D](#) [FCN-268M024-G/1D](#) [MIS-048-01-F-D-DP-K](#)  
[832-10-034-10-001000](#) [FX4C-80S-1.27DSA](#) [93696-330](#) [224393](#) [FCN-235D050-G/C](#) [210-93-314-41-105000](#) [MDF7-40DP-2.54DSA\(55\)](#)  
[55323-1519](#) [069159702701000](#) [101A10019X](#) [105061100000861+](#) [75140-7012](#) [87471-650](#) [1744382-4](#) [063209](#) [10124054-515LF](#) [68685-603](#)  
[8-1616154-3](#) [541371078](#) [IL-WX-10PB-HF-B-E1000E](#) [FX23-40P-0.5SV15B](#) [FCN-214J100-G/0](#) [354184](#) [P50-028-DDS-TG](#) [53309-2471](#)  
[54546-2071](#) [1586617-1](#) [504248-1210](#) [504248-2010](#) [1-1437355-2](#) [9159005551906](#) [NDS100-004-BF](#) [93696-730LF](#) [91922-31141LF](#) [505274-](#)  
[3440](#) [501493-2410](#) [504208-3410](#) [505006-0811](#) [505274-2040](#) [202436-1600](#) [202477-0414](#) [71660-7580](#) [73420-5192](#) [360-10-107-00-001000](#)