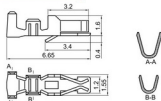


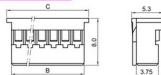
### 端子 TERMINAL (PHD)

| 型号<br>Type | 适用线规<br>Applicable wires |       | 电线外径<br>O.D of wire ins<br>mm | 数量<br>Quantity |
|------------|--------------------------|-------|-------------------------------|----------------|
|            | mm <sup>2</sup>          | AWG#  |                               |                |
| HX20016-PT | 0.08~0.33                | 28~22 | 1.0~1.5                       | 10000PCS/包     |

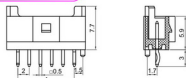
### HX20016-PT (PHD)



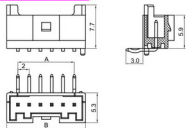
### HX20018-Y (PA)



### HX20018-A (PA)



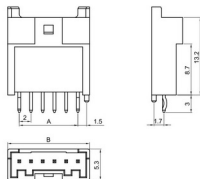
### HX20018-WA (PA)



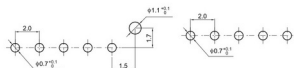
## 技术参数 SPECIFICATIONS

- ❑ 线数 (Poles) : 2~15(30)
- ❑ 适用线规 (Applicable wires) : AWG28#~22#
- ❑ 适应基板厚度 (Applicable PC board thickness) : 1.6mm
- ❑ 温度范围 (Temperature range) : -25℃~85℃
- ❑ 额定电压 (Voltage rating) : 250V.Ac/Dc
- ❑ 额定电流 (Current rating) : 3A
- ❑ 接触电阻 (Contact resistance) : ≤0.02Ω
- ❑ 绝缘电阻 (Insulation resistance) : ≥1000MΩ
- ❑ 耐压 (Withstand voltage) : 1000V.Ac/1min
- ❑ 材料 (Material) :  
 孔座 (Housing) : 尼龙 (PA66) UL94V-2(O)  
 针座 (Wafer) : 尼龙 (PA66) UL94V-2(O)  
 端子 (Terminal) : 磷青铜 (Phos.bronze Tin/plated)

### HX20018-BH (PA)



## 安装尺寸 MOUNTING MEASUREMENT



(HX20018-A/BH)

(HX20018-WA)

### 孔座 HOUSING (PA)

| 线数<br>Poles | 型号<br>Type  | 尺寸Dimensions(mm) |      |      |
|-------------|-------------|------------------|------|------|
|             |             | A                | B    | C    |
| 2           | HX20018-2Y  | 2.0              | 4.4  | 6.0  |
| 3           | HX20018-3Y  | 4.0              | 6.4  | 8.0  |
| 4           | HX20018-4Y  | 6.0              | 8.4  | 10.0 |
| 5           | HX20018-5Y  | 8.0              | 10.4 | 12.0 |
| 6           | HX20018-6Y  | 10.0             | 12.4 | 14.0 |
| 7           | HX20018-7Y  | 12.0             | 14.4 | 16.0 |
| 8           | HX20018-8Y  | 14.0             | 16.4 | 18.0 |
| 9           | HX20018-9Y  | 16.0             | 18.4 | 20.0 |
| 10          | HX20018-10Y | 18.0             | 20.4 | 22.0 |
| 11          | HX20018-11Y | 20.0             | 22.4 | 24.0 |
| 12          | HX20018-12Y | 22.0             | 24.4 | 26.0 |
| 13          | HX20018-13Y | 24.0             | 26.4 | 28.0 |
| 14          | HX20018-14Y | 26.0             | 28.4 | 30.0 |
| 15          | HX20018-15Y | 28.0             | 30.4 | 32.0 |
| ...         | ...         | ...              | ...  | ...  |
| 30          | HX20018-30Y | 58.0             | 60.4 | 62.0 |

### 针座 WAFER (PA)

| 线数<br>Poles | 型号<br>Type        | 尺寸Dimensions(mm) |      |
|-------------|-------------------|------------------|------|
|             |                   | A                | B    |
| 2           | HX20018-2A/WA/BH  | 2.0              | 6.0  |
| 3           | HX20018-3A/WA/BH  | 4.0              | 8.0  |
| 4           | HX20018-4A/WA/BH  | 6.0              | 10.0 |
| 5           | HX20018-5A/WA/BH  | 8.0              | 12.0 |
| 6           | HX20018-6A/WA/BH  | 10.0             | 14.0 |
| 7           | HX20018-7A/WA/BH  | 12.0             | 16.0 |
| 8           | HX20018-8A/WA/BH  | 14.0             | 18.0 |
| 9           | HX20018-9A/WA/BH  | 16.0             | 20.0 |
| 10          | HX20018-10A/WA/BH | 18.0             | 22.0 |
| 11          | HX20018-11A/WA/BH | 20.0             | 24.0 |
| 12          | HX20018-12A/WA/BH | 22.0             | 26.0 |
| 13          | HX20018-13A/WA/BH | 24.0             | 28.0 |
| 14          | HX20018-14A/WA/BH | 26.0             | 30.0 |
| 15          | HX20018-15A/WA/BH | 28.0             | 32.0 |
| ...         | ...               | ...              | ...  |
| 30          | HX20018-30A/WA/BH | 58.0             | 62.0 |

## X-ON Electronics

Largest Supplier of Electrical and Electronic Components

*Click to view similar products for [Headers & Wire Housings](#) category:*

*Click to view products by [Hongxing](#) manufacturer:*

Other Similar products are found below :

[95000-104TRLF](#) [10135584-644402LF](#) [DF62W-EP2022PCA](#) [95000-106TRLF](#) [DF62W-2022SCA](#) [DF62W-EP2022PC](#) [2203348](#) [DF62W-2022SC](#) [1084018](#) [1029039](#) [1084017](#) [802-10-012-10-002000](#) [1112640](#) [1112639](#) [891-007-9SS-BST1T](#) [000-34000](#) [0008550134](#) [0009482033](#) [0009507031](#) [57102-F02-18ULF](#) [57102-S06-03LF](#) [57202-S52-04LF](#) [PCN6-15S-2.5E](#) [0039019024](#) [58102-G61-06LF](#) [582553-1](#) [0009485154](#) [0009508121](#) [0022285053](#) [0050291907](#) [018731A](#) [LY20-4P-DT1-P1E-BR](#) [02.125.8002.8](#) [60101931](#) [60598-1 \(Cut Strip\)](#) [M1625-3R/100](#) [61062-3](#) [61082-181009](#) [CSU011177004](#) [636-1427](#) [638009-1](#) [641938-9](#) [641991-4](#) [644168-1](#) [644827-2](#) [647662-1](#) [65039-019ELF](#) [65692-001LF](#) [65781-018](#) [65781-047](#)