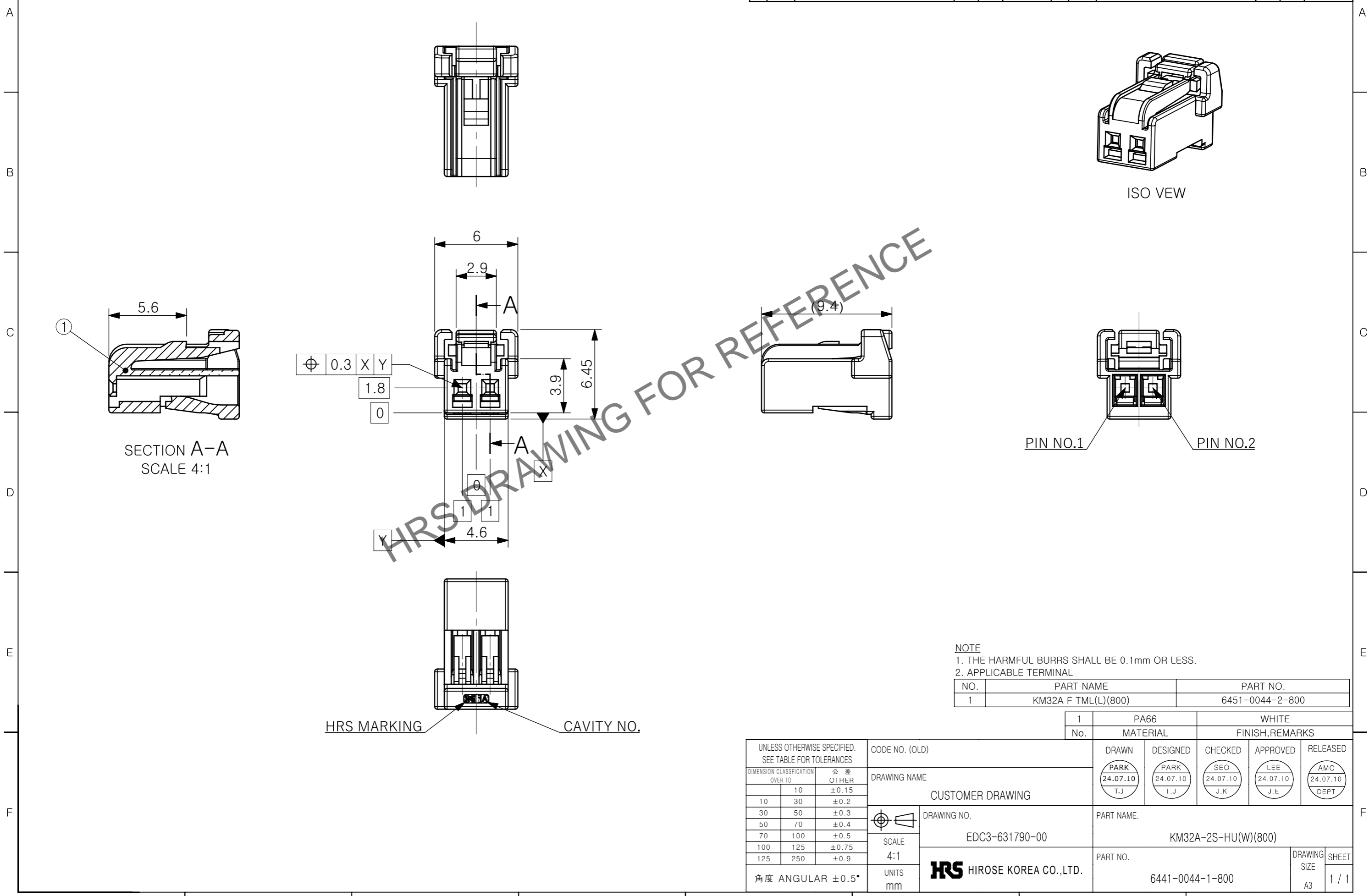


Mar.1.2025 Copyright 2025 HIROSE ELECTRIC CO., LTD. All Rights Reserved.
In case of consideration for using Automotive equipment / device which demand high reliability, kindly contact our sales window correspondents.

△數 COUNT	訂正記事 DESCRIPTION OF REVISIONS	擔當 BY	檢圖 CHKD	年月日 DATE	△數 COUNT	訂正記事 DESCRIPTION OF REVISIONS	擔當 BY	檢圖 CHKD	年月日 DATE
△	-	PTJ	LJE	24.07.10					



NOTE
1. THE HARMFUL BURRS SHALL BE 0.1mm OR LESS.
2. APPLICABLE TERMINAL

NO.	PART NAME	PART NO.
1	KM32A F TML(L)(800)	6451-0044-2-800

UNLESS OTHERWISE SPECIFIED. SEE TABLE FOR TOLERANCES			CODE NO. (OLD)							
DIMENSION CLASSIFICATION	公差	OTHER	DRAWING NAME							
OVER TO			CUSTOMER DRAWING							
10	10	±0.15	DRAWING NO. EDC3-631790-00	SCALE 4:1	UNITS mm	PART NAME.				
10	30	±0.2				KM32A-2S-HU(W)(800)				
30	50	±0.3				PART NO.				
50	70	±0.4				6441-0044-1-800				
70	100	±0.5				DRAWING SIZE				
100	125	±0.75				A3				
125	250	±0.9	SHEET							
角度 ANGULAR ±0.5°			1 / 1							

X-ON Electronics

Largest Supplier of Electrical and Electronic Components

Click to view similar products for [Headers & Wire Housings](#) category:

Click to view products by [Hirose](#) manufacturer:

Other Similar products are found below :

[892-18-020-10-001101](#) [0010894062](#) [0010977306](#) [0015477636](#) [0015917161](#) [0022104068](#) [0022121042](#) [0022155065](#) [0022281023](#) [57102-F02-18ULF](#) [PCN6B-10P-2.5DS](#) [58102-G61-06LF](#) [0015911208](#) [01.001.5753.1](#) [0022285048](#) [0050291907](#) [02.125.8002.8](#) [CSU011177004](#) [622-0430](#) [636-1030](#) [641938-9](#) [65692-001LF](#) [65781-018](#) [65781-047](#) [65817-010LF](#) [67095-007LF](#) [67601157](#) [68645-018](#) [699319-000](#) [70.362.1628.0](#) [71.350.2428.0](#) [733-134](#) [733-162](#) [800-90-001-10-001000](#) [801-43-002-10-013000](#) [801-43-006-10-002000](#) [803-43-024-10-001000](#) [803-93-012-10-001000](#) [819-22-004-30-001101](#) [MMS10801TSV](#) [850-10-006-10-001000](#) [851-87-009-30-136101](#) [852-10-016-10-001000](#) [852-10-026-10-001000](#) [856-10-002-40-001000](#) [PH2-08-SGA](#) [90309-116LF](#) [90309-118LF](#) [90309-912LF](#) [93.016.0053.1](#)