

Customer Information Sheet

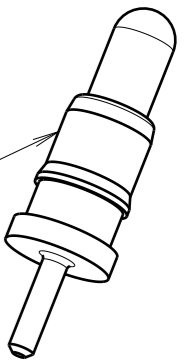
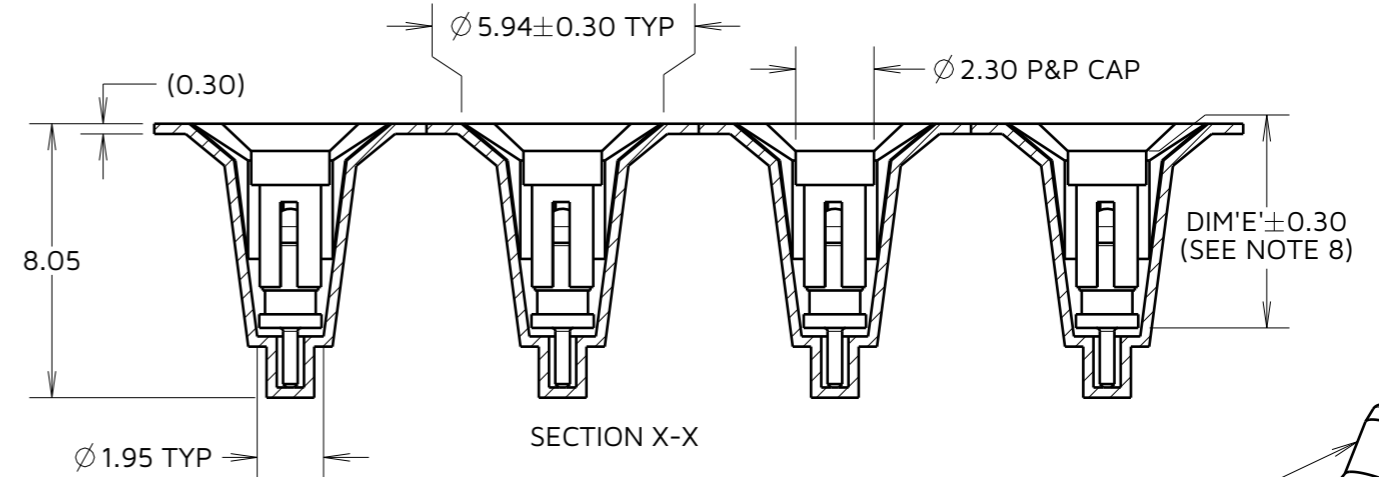
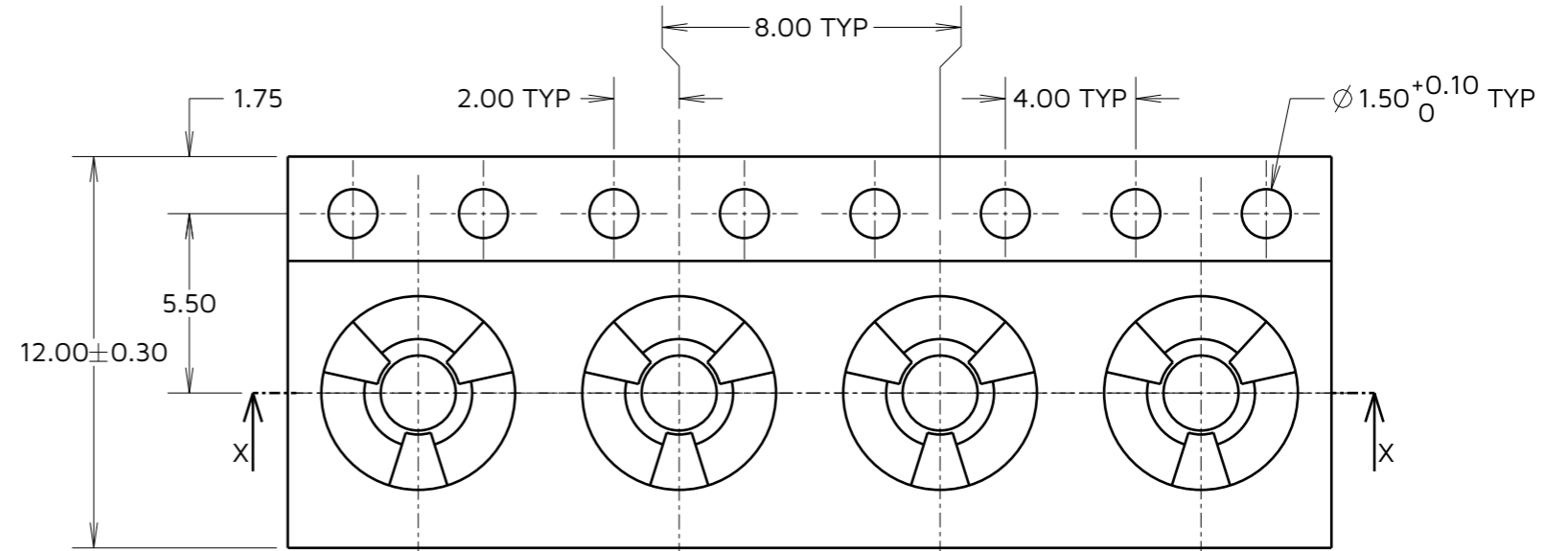
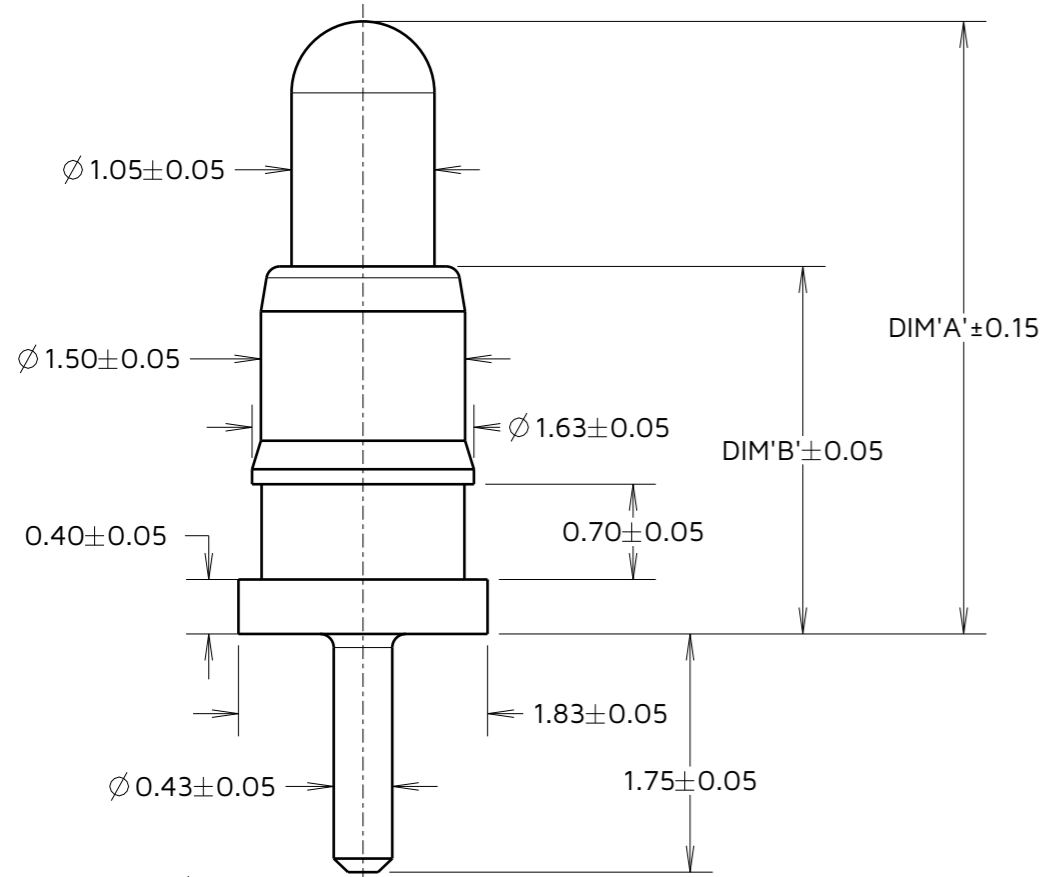
IF IN DOUBT - ASK

©

NOT TO SCALE

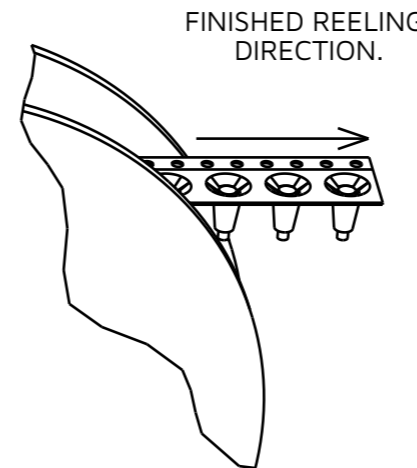
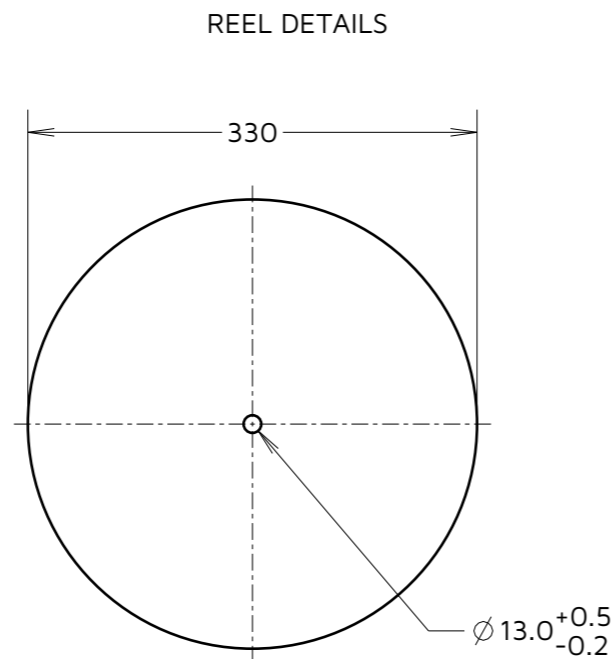
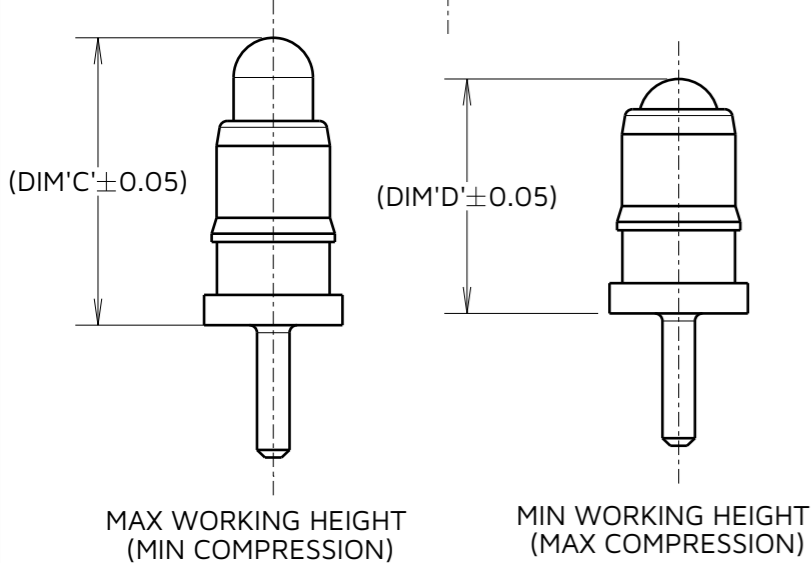
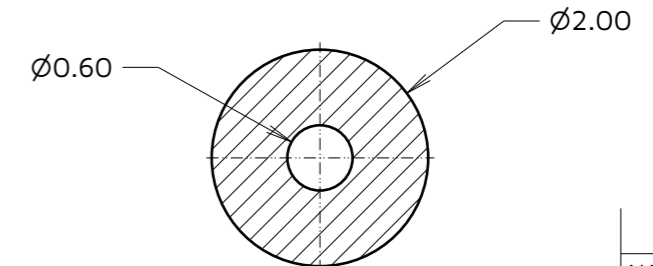
THIRD ANGLE PROJECTION

ALL DIMENSIONS IN mm



P70-2610045R SHOWN FOR ILLUSTRATIVE PURPOSES ONLY. SEE TABLE FOR PART NUMBER.

RECOMMENDED PCB LAYOUT TOLERANCE ±0.05 (UNLESS OTHERWISE STATED)



- NOTES:
- MATERIAL.
BARREL & PLUNGER: COPPER ALLOY
SPRING: STAINLESS STEEL
 - PLATING.
PLUNGER: GOLD OVER NICKEL
BARREL : GOLD OVER NICKEL
 - TAPE MATERIAL: PET TRANSPARENT
 - SEE TABLE 1 QUANTITY OF COMPONENT PER REEL.
 - SEE TABLE 1 FOR COMPONENTS COMPATIBLE WITH TAPE POCKET SHOWN ABOVE.
 - THIS PRODUCT IS TAPED AND REELED IN ACCORDANCE WITH EIA-481 STANDARDS.
 - SEE SHEET 3 FOR P70-2620045R AND P70-2630045R.
 - DIM'I' ILLUSTRATES THE TOTAL COMPONENT HEIGHT EXCLUDING LOCATION PEG (PICK AND PLACE CAP INCLUDED.)
 - FOR COMPLETE ELECTRICAL AND MECHANICAL SPECIFICATION SEE COMPONENT SPECIFICATION C056XX (LATEST ISSUE)

HARWIN PART NO.	DIM 'A'	DIM 'B'	DIM 'C'	DIM 'D'	DIM 'E'	QTY PER REEL
P70-2600045R	3.50	2.50	3.00	2.50	5.40	1000 PCS
P70-2610045R	4.50	2.70	3.80	3.10	5.60	

FC	1	23.04.24	33949
NAME	ISS.	DATE	CN/CO
APPROVED: R.PORTLOCK			
CHECKED: A.YEOMANS			
DRAWN: F.CHRISPINE			
ASSEMBLY DRG:			

HARWIN

www.harwin.com

TOLERANCES
X. = ±1mm
X.X = ±0.50mm
X.XX = ±0.20mm
X.XXX = ±0.01mm
ANGLES = ±5°
UNLESS STATED

THIS DRAWING AND ANY INFORMATION OR DESCRIPTIVE MATTER SET OUT HEREON ARE CONFIDENTIAL AND COPYRIGHT PROPERTY OF THE HARWIN GROUP AND MUST NOT BE DISCLOSED, LOANED, COPIED OR USED FOR MANUFACTURING, TENDERING OR FOR ANY OTHER PURPOSE WITHOUT THEIR WRITTEN PERMISSION.

MATERIAL:

SEE NOTE 1

TITLE:
THROUGH HOLE SPRING LOADED POGO PIN

DRAWING NUMBER:
P70-26X0045R

SHT
2 OF 3

Customer Information Sheet

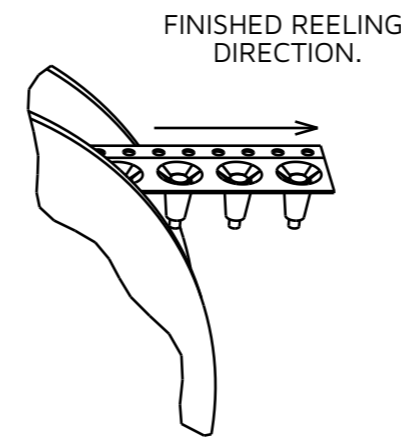
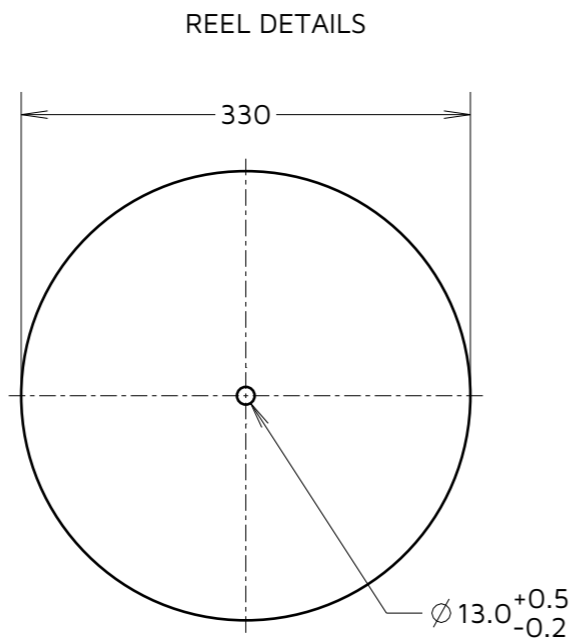
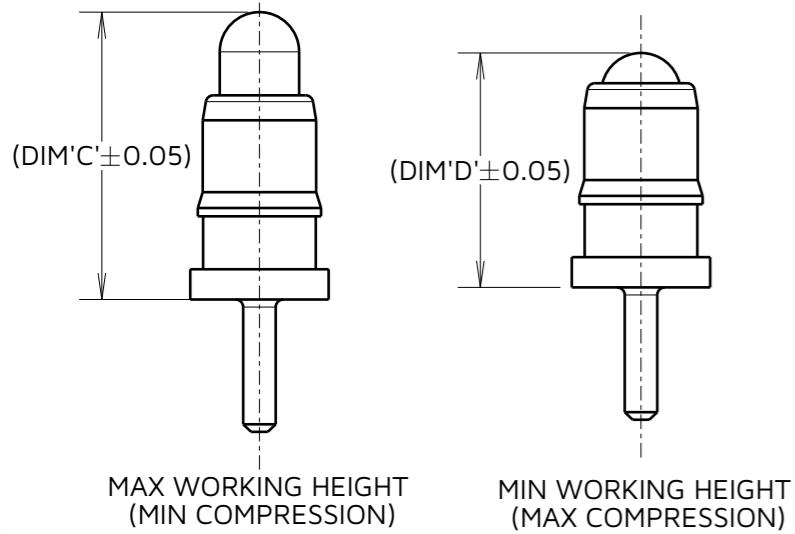
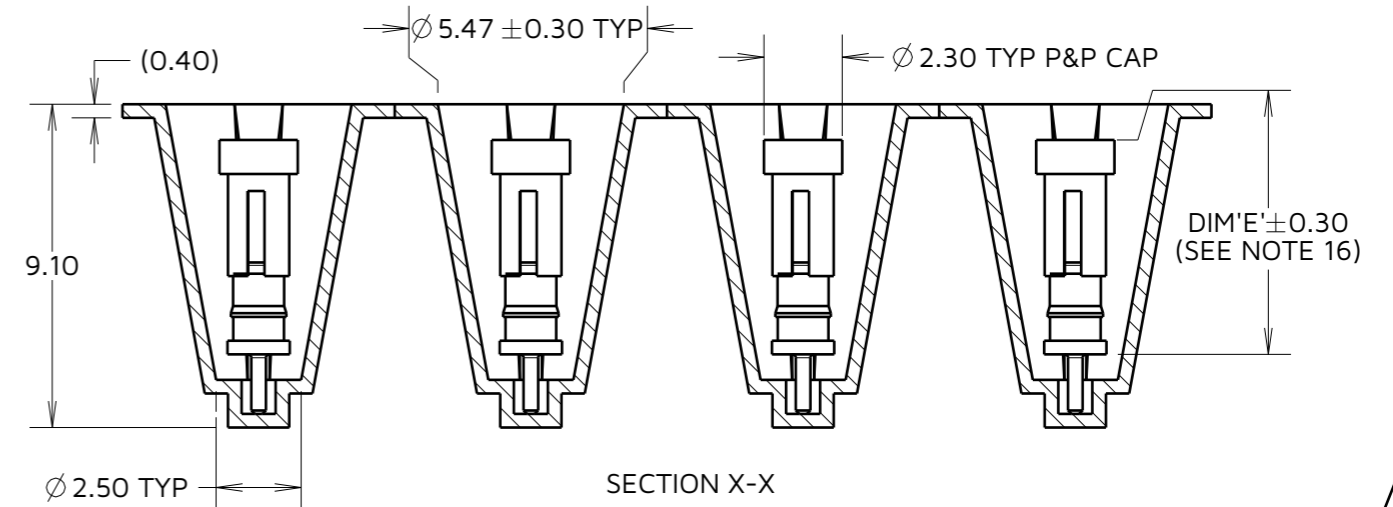
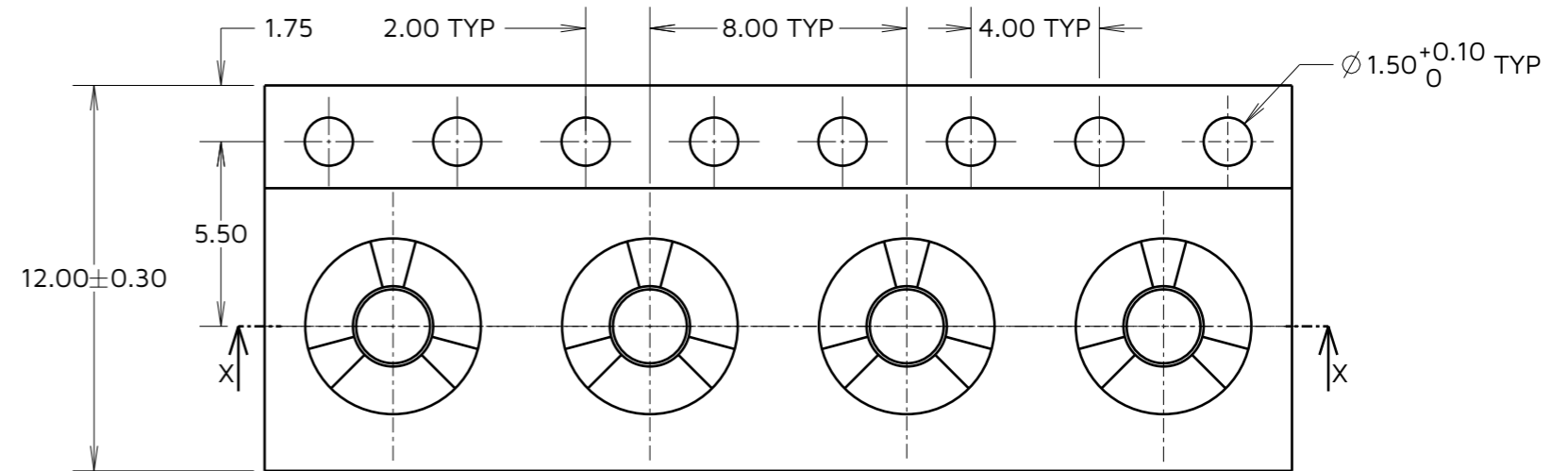
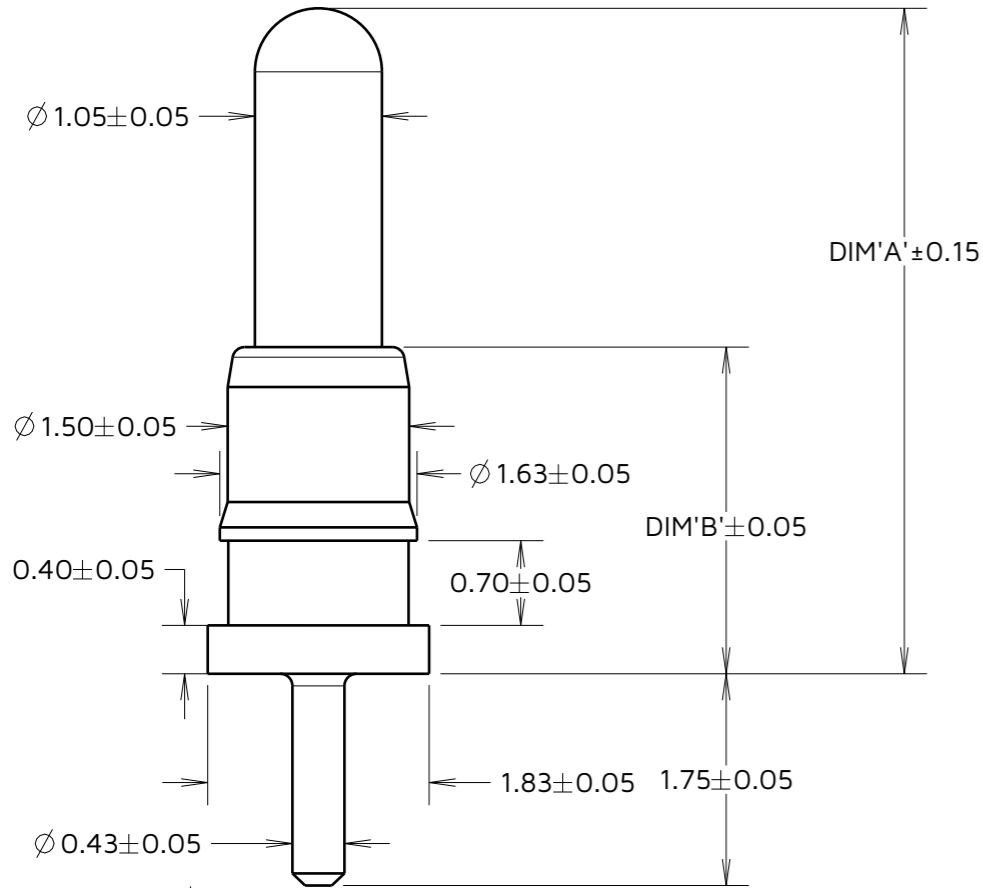
IF IN DOUBT - ASK

©

NOT TO SCALE

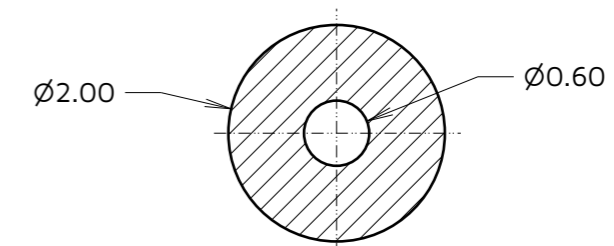
THIRD ANGLE PROJECTION

ALL DIMENSIONS IN mm



P70-2600045R SHOWN FOR ILLUSTRATIVE PURPOSES ONLY. SEE TABLE FOR PART NUMBER.

RECOMMENDED PCB LAYOUT TOLERANCE ± 0.05 (UNLESS OTHERWISE STATED)



- NOTES:
- MATERIAL
BARREL & PLUNGER: COPPER ALLOY
SPRING: STAINLESS STEEL
 - PLATING
PLUNGER: GOLD OVER NICKEL
BARREL : GOLD OVER NICKEL
 - MATERIAL: PET TRANSPARENT
 - SEE TABLE FOR QUANTITY OF COMPONENT PER REEL.
 - THIS PRODUCT IS TAPED AND REELED IN ACCORDANCE WITH EIA-481 STANDARDS.
 - SEE TABLE 2 FOR COMPONENTS COMPATIBLE WITH TAPE POCKET SHOWN ABOVE.
 - DIM'E' ILLUSTRATES THE TOTAL COMPONENT HEIGHT EXCLUDING LOCATION PEG (PICK AND PLACE CAP INCLUDED.)
 - FOR COMPLETE ELECTRICAL AND MECHANICAL SPECIFICATION SEE COMPONENT SPECIFICATION C056XX (LATEST ISSUE)

HARWIN PART NO.	DIM 'A'	DIM 'B'	DIM 'C'	DIM 'D'	DIM 'E'	QTY PER REEL
P70-2620045R	5.50	2.70	4.80	4.10	6.90	1100 PCS
P70-2630045R	6.50	5.05	5.80	5.10	7.30	

FC	1	23.04.24	33949
NAME	ISS.	DATE	CN/CO
APPROVED: R.PORTLOCK			
CHECKED: A.YEOMANS			
DRAWN: F.CHRISPINE			
ASSEMBLY DRG:			

HARWIN

www.harwin.com

TOLERANCES
X. = $\pm 1\text{mm}$
X.X = $\pm 0.50\text{mm}$
X.XX = $\pm 0.20\text{mm}$
X.XXX = $\pm 0.01\text{mm}$
ANGLES = $\pm 5^\circ$
UNLESS STATED

THIS DRAWING AND ANY INFORMATION OR DESCRIPTIVE MATTER SET OUT HEREON ARE CONFIDENTIAL AND COPYRIGHT PROPERTY OF THE HARWIN GROUP AND MUST NOT BE DISCLOSED, LOANED, COPIED OR USED FOR MANUFACTURING, TENDERING OR FOR ANY OTHER PURPOSE WITHOUT THEIR WRITTEN PERMISSION.

MATERIAL:

SEE NOTE 8

TITLE:
THROUGH HOLE SPRING LOADED POGO PIN

DRAWING NUMBER:
P70-26X0045R

SHT
3 OF 3

X-ON Electronics

Largest Supplier of Electrical and Electronic Components

Click to view similar products for [Terminals](#) category:

Click to view products by [Harwin](#) manufacturer:

Other Similar products are found below :

[00-054007-01074-6](#) [00-054007-70206-1](#) [00-054007-70210-8](#) [00-054007-70217-7](#) [00-054007-70228-3](#) [00-054007-70256-6](#) [00-054007-70316-7](#) [00-054007-49560-4](#) [00-054007-70209-2](#) [00-054007-70231-3](#) [00-054007-70241-2](#) [00-054007-70242-9](#) [00-054007-70246-7](#) [00-054007-70263-4](#) [00-054007-70288-7](#) [00-054007-70290-0](#) [00-054007-70300-6](#) [00-054007-70304-4](#) [01-2900-1-04412](#) [0190160084](#) [0190350008](#) [600TS-10](#) [605601-1](#) [60617-1-C](#) [61314-6-C](#) [626-0194](#) [63-S](#) [M55155/079C01](#) [M55155/099B03](#) [M55155/109H01](#) [M55155/12XH05](#) [M55155/29XJ08](#) [M55155/30-6S](#) [M55155/30-9S](#) [M55155/30XI09](#) [M6-14RSX](#) [M86700006](#) [D18-110B-C](#) [D18-110B-M](#) [701-1936](#) [701-1955](#) [701-2003](#) [701-2007](#) [701-2013](#) [701-2018](#) [701-2069](#) [701-2077-60](#) [701-2315](#) [701-2430](#) [701-2480](#)