



FEATURES

- * Ideal for surface mount applications
- * Easy pick and place
- * Built-in strain relief
- * Fast switching speed

MECHANICAL DATA

- * Case: Molded plastic
- * Epoxy: UL 94V-0 rate flame retardant
- * Metallurgically bonded construction
- * Polarity: Color band denotes cathode end
- * Mounting position: Any

Marking

Type	Marking
3DFR1M	7R

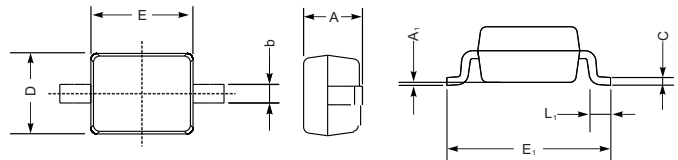
VOLTAGE RANGE

1000 Volts

CURRENT

1.0 Ampere

SOD323



UNIT		A	C	D	E	E ₁	b	L ₁	A ₁
mm	max	1.1	0.15	1.4	1.8	2.75	0.4	0.45	0.2
	min	0.8	0.08	1.2	1.4	2.55	0.25	0.2	—
mil	max	43	5.9	55	70	108	16	16	8
	min	32	3.1	47	63	100	9.8	7.9	—

MAXIMUM RATINGS AND ELECTRICAL CHARACTERISTICS

Rating 25°C ambient temperature unless otherwise specified.
 Single phase half wave, 60Hz, resistive or inductive load.
 For capacitive load, derate current by 20%.

TYPE NUMBER	3DFR1M	UNITS
Maximum Recurrent Peak Reverse Voltage	1000	
Maximum RMS Voltage	700	V
Maximum DC Blocking Voltage	1000	
Maximum Average Forward Rectified Current at Ta=25°C	1.0	A
Peak Forward Surge Current, 8.3 ms single half sine-wave superimposed on rated load (JEDEC method)	25	A
Maximum Instantaneous Forward Voltage at 1.0A	1.3	V
Maximum DC Reverse Current at Rated DC Blocking Voltage	5.0 100	μA
Maximum Reverse Recovery Time (Note 1)	500	nS
Typical Junction Capacitance (Note 2)	15	pF
Typical Thermal Resistance R _{JA} (Note 3)	80	°C/W
Operating and Storage Temperature Range T _J , T _{STG}	-65 — +150	°C

NOTES:

1. Reverse Recovery Time test condition: IF=0.5A, IR=1.0A, IRR=0.25A
2. Measured at 1MHz and applied reverse voltage of 4.0V D.C.
3. Thermal Resistance from Junction to Ambient.

RATING AND CHARACTERISTIC CURVES (3DFR1M)

FIG.1-TYPICAL FORWARD CHARACTERISTICS

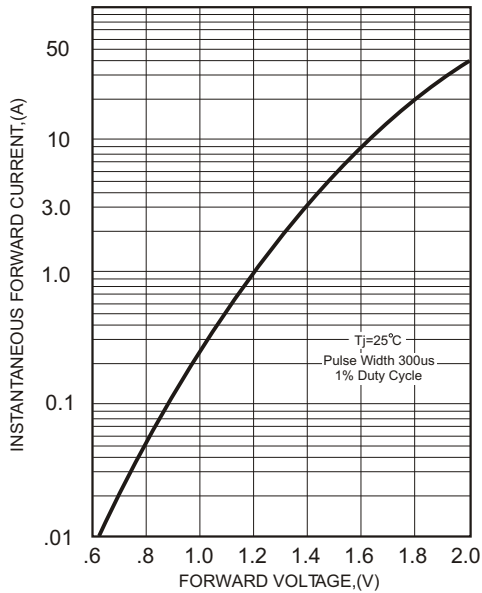


FIG.2-TYPICAL FORWARD CURRENT DERATING CURVE

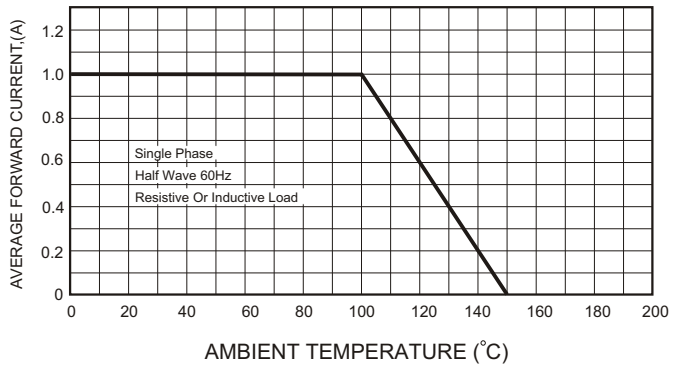


FIG.4-MAXIMUM NON-REPETITIVE FORWARD SURGE CURRENT

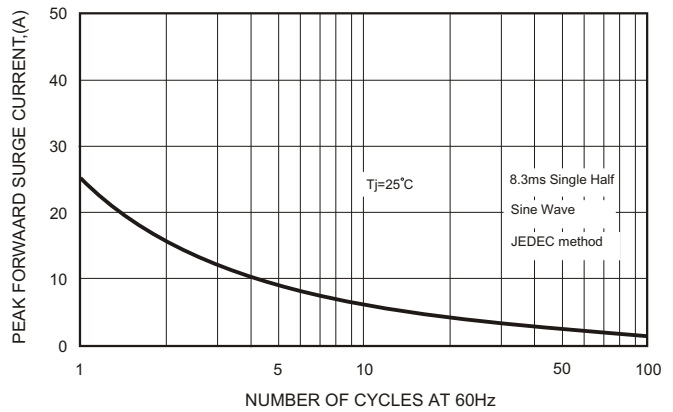
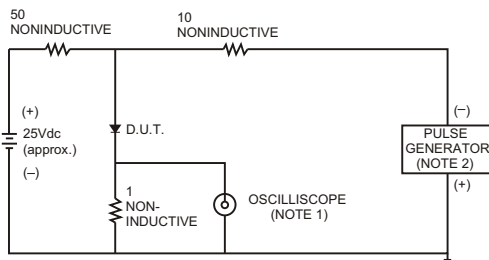


FIG.3- TEST CIRCUIT DIAGRAM AND REVERSE RECOVERY TIME CHARACTERISTICS



- NOTES: 1. Rise Time= 7ns max., Input Impedance= 1 megohm, 22pF.
2. Rise Time= 10ns max., Source Impedance= 50 ohms.

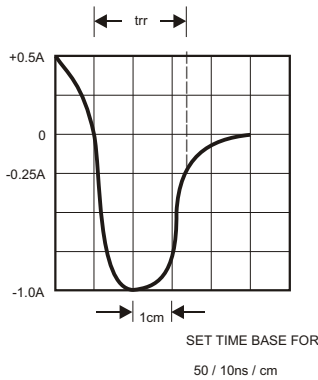
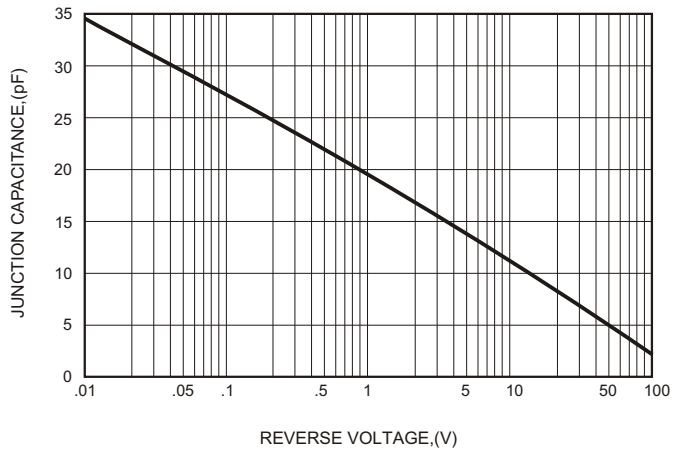


FIG.5-TYPICAL JUNCTION CAPACITANCE



X-ON Electronics

Largest Supplier of Electrical and Electronic Components

Click to view similar products for [Rectifiers](#) category:

Click to view products by [GOODWORK](#) manufacturer:

Other Similar products are found below :

[RL252-TP](#) [DLA11C-TR-E](#) [JANTX1N5634A](#) [UFS120Je3/TR13](#) [A1N5404G-G](#) [CRF02\(T5L,TEMQ\)](#) [ACGRB207-HF](#) [CLH03\(TE16L,Q\)](#)
[UES1302](#) [ACEFC304-HF](#) [JANTX1N5822US](#) [SM100](#) [NTE5819](#) [NTE5828](#) [NTE5911](#) [NTE5915](#) [NTE6104](#) [NTE6164](#) [NTE6165](#) [NTE6364](#)
[SET130312](#) [NRVUS110VT3G](#) [UES1106](#) [UES1306](#) [DSI30-08AS-TRL](#) [NRVUS240VT3G](#) [JAN1N649-1](#) [R4000GPS-TP](#) [DPG60IM300PC-](#)
[TRL](#) [D20XB60-7101](#) [F11K120](#) [S2G-AQ](#) [S2M-AQ](#) [S3JSMB](#) [S3MSMB](#) [SKN 320/08](#) [SKR 26/08](#) [DTH8S06D](#) [DTH810D](#) [RU20A](#) [VS-](#)
[E5TX3006S2LHM3](#) [RGBP310](#) [SFF2060H-P3](#) [HER608](#) [RS2MF](#) [SFR25U20EPN](#) [SFRD92-02AEPS](#) [ES1JF](#) [ES2EF](#) [ES2AF](#)