

# Series 62 Saddle Clamps

for Series 80 Mighty Mouse Connectors

## 620MS064 Saddle Clamp, General Purpose, Direct Coupling



Adapter Code **M**

This accessory fits Series 80 Mighty Mouse Connectors

### MATERIAL/FINISH

Body, saddles: aluminum or SST/ finish per PN Build  
Screws, washers: stainless steel/passivated

*Full radius saddles. Lightweight. Low profile. Direct coupling.* Saddle clamp fits Series 80 Mighty Mouse connectors. Aluminum or stainless steel.

### PART NUMBER

620MS064

MT

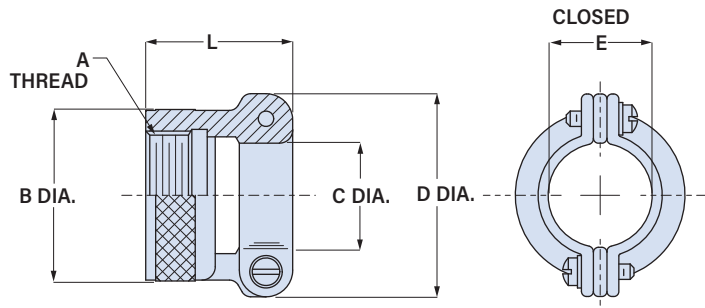
09

Base P/N **620MS064** Straight

**Material/Finish**

- C** Alum/Black Anodize
- M** Alum/Electroless Nickel
- MT** Alum/Nickel-PTFE
- NF** Alum/Olive Drab Cadmium
- ZR** Alum/Black Zinc-Nickel
- TZ** Alum/Tin-Zinc
- ZI** SST/Passivated

**Size Code** **05 06 07 08 09 10 11 12 13 14 15 16 17**  
See table below for size code



Size Code	Shell Size		A Thread UNEF-2B	øB Max.		C Dia.		D Dia.		E Closed		L Max.	
	Series 800, 801, 803, 804	Series 805		in	mm	in	mm	in	mm	in	mm	in	mm
<b>05</b>	5	N/A	0.250-32	.350	8.9	.119	3.0	.496	12.6	.11	2.8	.625	15.9
<b>06</b>	6	N/A	0.3125-32	.415	10.5	.182	4.6	.582	14.8	.17	4.3	.625	15.9
<b>11</b>	N/A	8	0.3750-32	.465	11.8	.182	4.6	.582	14.8	.17	4.3	.625	15.9
<b>07</b>	7	9	0.4375-28	.530	13.5	.244	6.2	.656	16.7	.23	5.8	.688	17.5
<b>08</b>	8	10	0.500-28	.595	15.1	.307	7.8	.726	18.4	.30	7.6	.688	17.5
<b>09</b>	9	11	0.5625-24	.650	16.5	.307	7.8	.726	18.4	.30	7.6	.750	19.1
<b>10</b>	10	12	0.625-24	.715	18.2	.369	9.4	.885	22.5	.36	9.1	.875	22.2
<b>12</b>	11, 12, 13	13	0.6875-24	.785	19.9	.432	11.0	.952	24.2	.42	10.7	.875	22.2
<b>13</b>	N/A	15	0.750-20	.830	21.1	.432	11.0	.952	24.2	.42	10.7	.875	22.2
<b>14</b>	14, 15, 16, 17	18, 19	0.9375-20	1.020	25.9	.494	12.6	1.018	25.9	.48	12.2	1.000	25.4
<b>15</b>	14, 15, 16, 17	18, 19	0.9375-20	1.020	25.9	.619	15.7	1.148	29.2	.61	15.5	1.000	25.4
<b>16</b>	19	21	1.0625-18	1.155	29.3	.744	18.9	1.273	32.3	.73	18.5	1.000	25.4
<b>17</b>	21	23	1.1875-18	1.280	32.5	.869	22.1	1.400	35.6	.86	21.8	1.125	28.6

## X-ON Electronics

Largest Supplier of Electrical and Electronic Components

*Click to view similar products for [Circular MIL Spec Strain Reliefs & Adapters](#) category:*

*Click to view products by [Glenair](#) manufacturer:*

Other Similar products are found below :

[0113-023-000](#) [620AB038Z136](#) [620FB038NF08](#) [620HA038NF09](#) [620HA038NF11](#) [620HA038NF13](#) [620HB049NF17](#) [620MS064NF12](#)  
[620MS065ZNU06](#) [659943-000](#) [66241-10A](#) [CW0948-000](#) [CY0122-000](#) [70.360.1628.0](#) [703797-000](#) [F77132-000](#) [792625-000](#) [804567-000](#)  
[807502-000](#) [808298-000](#) [G65062-12](#) [G8023-2013-9N](#) [G8187C2010-44N](#) [G8252-8NF](#) [G8377-21B](#) [G8377-21M](#) [97-282-18-10](#) [97-283-20](#)  
[HEX40-AC-45S-11-A2-1](#) [MS3057-10A-624](#) [MS3057-12A-624](#) [MS3057-20B](#) [MS3057-24A](#) [MS3057-6A-624](#) [E73614-000](#) [MS3417-14A](#)  
[MS3417-14G](#) [MS3417-16A](#) [MS3417-16C](#) [MS3417-28N](#) [MS3418-16A](#) [MS3418-18N](#) [192900-0106](#) [HXS120-AC-90-17-A1-1](#) [214607-000](#)  
[958955-000](#) [294001-000](#) [97-67-16-4](#) [ACT00AB-E-EL51S](#) [201M118-19G](#)