

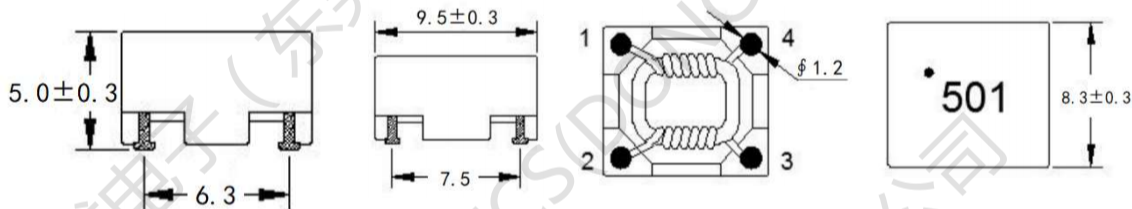
SMD Common Mode Line Filter

FC-SLF1050 –Series

Low profile, only 5.3max
 High Impedance up to: 1000 Ω
 Current Capabilit up to 5.0A
 Operating temperature : -40°C to $+125^{\circ}\text{C}$
 Rated voltage 80 Vdc / 42 Vac



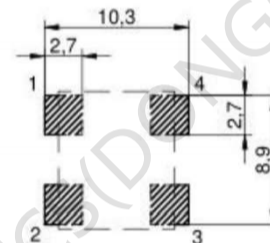
1. Dimensions:mm



2.Schematic:

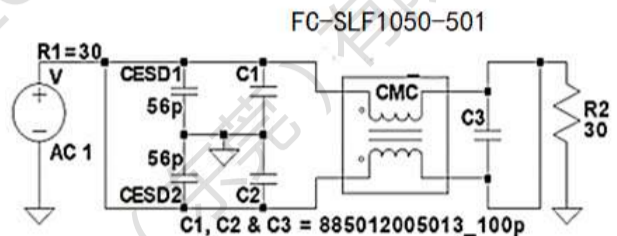
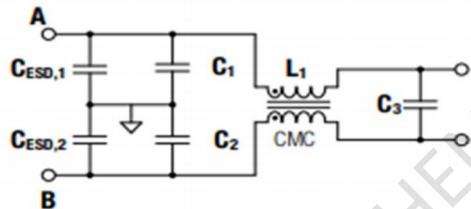


3.LAYOUT RECOMMENDATION:(mm)



Land Pattern

4.Application Fig:





方成电子（东莞）有限公司

FC-SLF1050 -Series SMD Common Mode Line Filter

5. ELECTRIC CHARACTERICS

Part Number	Common mode Impedance (Ω) 100MHz	Inductance (μ H) typ	LK (μ H) Typ. (2-3 short)	RDC ($m\Omega$)	Current Rating (A)
				1-4 2-3	
FC-SLF1050-501-LF	500 \pm 25%	5.0	0.57	5.5	5.0
FC-SLF1050-801-LF	800 \pm 25%	9.0	0.97	11	3.5
FC-SLF1050-102-LF	1000 \pm 25%	11.0	1.3	30	2.5
FC-SLF1050-222-LF	2200 \pm 25%	30.0	3.5	60	1.4

Electrical Specifications @ 25°C — Operating Temperature -40°C to +125°C.

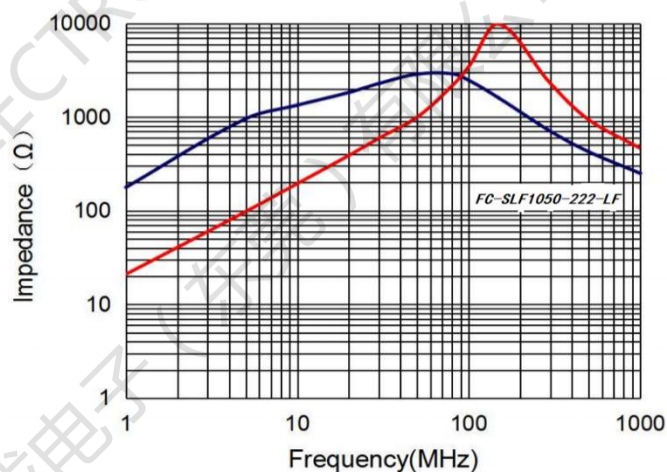
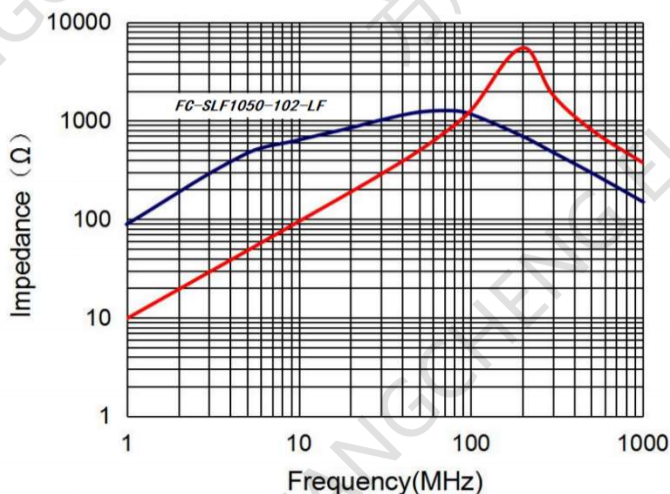
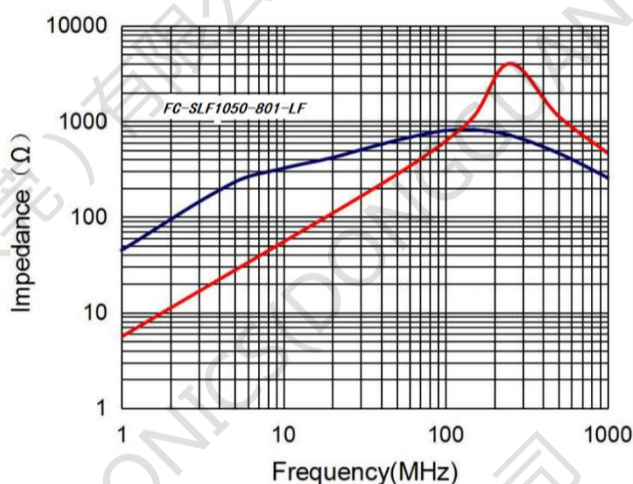
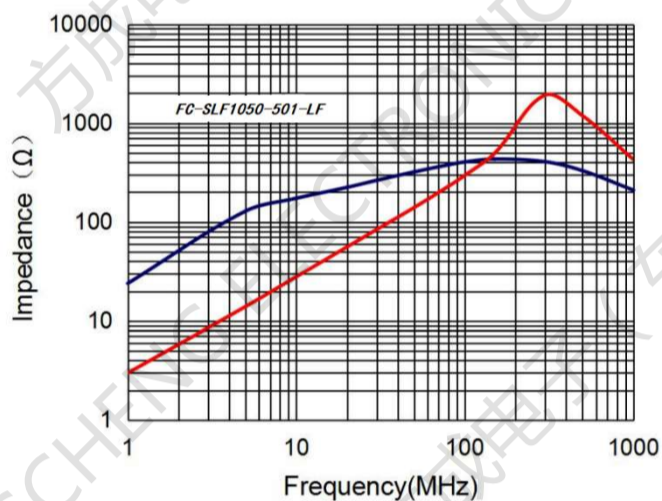
Test equipment : Inductance 100KHZ/0.1V

Rated voltage 80 Vdc / 42 Vac

Hi-Pot (N-N) : 250 Vac / 60 Hz , 3 mA / 1sec

6. Impedance. vs Frequency Insertion loss VS. Frequency:

— Frequency
— Impedance



X-ON Electronics

Largest Supplier of Electrical and Electronic Components

Click to view similar products for [Common Mode Chokes / Filters](#) category:

Click to view products by [FANGCHENG](#) manufacturer:

Other Similar products are found below :

[PE-64683](#) [RD5122-6-9M6](#) [RD6137-6-7M5](#) [RD8147-16-3M0](#) [ST6118T-R](#) [FE3X025-10-7NL](#) [RD7147-25-0M7](#) [TCM0806G-350-2P-T](#)
[TCM0806G-650-2P-T](#) [IND-0110](#) [UAL21VR0802000](#) [UALSC023000000](#) [UALSC1020JH000](#) [UALSU10VD20010](#) [UALSU9VD070100](#) [36-00037](#) [UALW21HS072450](#) [UALSU9H0208000](#) [UAL24VK06450CH](#) [PLT10HH501100PNB](#) [PLT10HH401100PNB](#) [PLT10HH1026R0PNB](#)
[36-00029-01](#) [PE-67531](#) [TLH10UB](#) [113 0R5](#) [2752045447](#) [7351V](#) [CMF16-153131](#) [RD7147-6-6M0](#) [T8116NLT](#) [FE2X10-4-2NL](#) [36-00029-07](#)
[T8003NLT](#) [CTX01-13663](#) [CTX66-19521-R](#) [RC212-0.5-10M](#) [RC112-0.4-15M](#) [RC212-0.6-6M8](#) [RC212-0.4-15M](#) [RC112-0.3-30M](#)
[WTCF2012Z0M751PB](#) [PH9408.814NLT](#) [PAC6006.364NLT](#) [PAC6006.444NLT](#) [PAC6006.204NLT](#) [PH9407.204NLT](#) [PAC6006.264NLT](#)
[PH9408.494NLT](#) [PAC6006.104NLT](#) [CM6350R-683-REEL](#)