

Aluminum electrolytic capacitors

Axial-lead and soldering star capacitors

Series/Type: B41695, B41795

Date: November 2012

© EPCOS AG 2015. Reproduction, publication and dissemination of this publication, enclosures hereto and the information contained therein without EPCOS' prior express consent is prohibited.

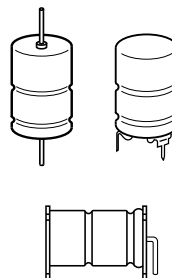
EPCOS AG is a TDK Group Company.

Applications

- Automotive electronics

Features

- Up to 150 °C operating temperature up to 55 V DC
- Rated voltage up to 100 V upon request
- Optimized CV value
- High ripple current capability
- High vibration stability
- Compact design
- Shelf life up to 15 years at storage temperatures up to 40 °C.
To ensure solderability, the capacitors should be built into the application within one year of delivery. After a total of two years' storage, the operating voltage must be applied for one hour to ensure the specified leakage current.
- RoHS-compatible



Construction

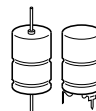
- Charge/discharge-proof, polar
- Aluminum case with insulating sleeve
- Negative pole connected to case

Terminals

- Axial leads, welded to ensure perfect electrical contact
- Soldering star for upright mounting on PCB available
- Alternative axial-lead design with double-sided plates for horizontal mounting available upon request

Taping and Packing

- Axial-lead capacitors will be delivered in pallet package
Capacitors with $d \times l \leq 16 \times 30$ mm are also available taped on reel
- Soldering star capacitors are packed in cardboard


Specifications and characteristics in brief

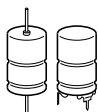
Rated voltage V _R	25 ... 75 V DC						
Surge voltage V _S	1.15 · V _R						
Rated capacitance C _R	220 ... 6800 µF						
Capacitance tolerance	– 10/+30% △ Q						
Leakage current I _{leak} (5 min, 20 °C)	$I_{\text{leak}} \leq 0.006 \text{ }\mu\text{A} \cdot \left(\frac{C_R}{\mu\text{F}} \cdot \frac{V_R}{V} \right) + 4 \text{ }\mu\text{A}$						
Self-inductance ESL ¹⁾	Diameter d (mm)		12	14	16	18	20/21
	Terminals	Length l (mm)	Approx. ESL (nH)				
	axial	25	–	22	–	30	–
		29	–	–	–	–	38
		30	21	24	29	34	–
		35	–	–	31	–	–
		39	–	–	33	38	45
		49	–	–	–	–	50
	soldering star	25	–	6	–	30	–
		30	6	7	8	10	–
		35	–	–	9	–	–
		39	–	–	9	11	13
		49	–	–	–	–	14
Useful life ²⁾	150 °C; V _{op} ; 0.5 · I _{AC,R} ³⁾ 140 °C; V _R ; I _{AC,R} 125 °C; V _R ; I _{AC,R} 85 °C; V _R ; I _{AC,max} 40 °C; V _R ; 2.1 · I _{AC,R}		> 1000 h > 1000 h > 3000 h > 8000 h > 200000 h		Requirements: ΔC/C ≤ ±30% of initial value ESR ≤ 3 times initial specified limit ⁴⁾ I _{leak} ≤ initial specified limit		
Voltage endurance test 125 °C; V _R	2000 h		Post test requirements: ΔC/C ≤ ±10% of initial value ESR ≤ 1.3% initial specified limit ⁴⁾ I _{leak} ≤ initial specified limit				
Vibration resistance test	To IEC 60068-2-6, test Fc: Frequency range 10 Hz ... 2 kHz, displacement amplitude max. 1.5 mm, acceleration max. 20 g, duration 3 × 2 h. Capacitor mounted by its wire leads at a distance of (6 ±1) mm from the case and additionally clamped by the case.						
IEC climatic category	To IEC 60068-1: 55/125/56 (–55 °C/+125 °C/56 days damp heat test)						
Detail specification	Similar to CECC 30301-802						
Sectional specification	IEC 60384-4						

1) If optimum circuit design is used, the values are lower by 30%.

2) Refer to chapter "General technical information, 5 Useful life" on how to interpret useful life.

3) V_{op} : see useful life graph

4) ESR_{max} at 100 Hz, 20 °C

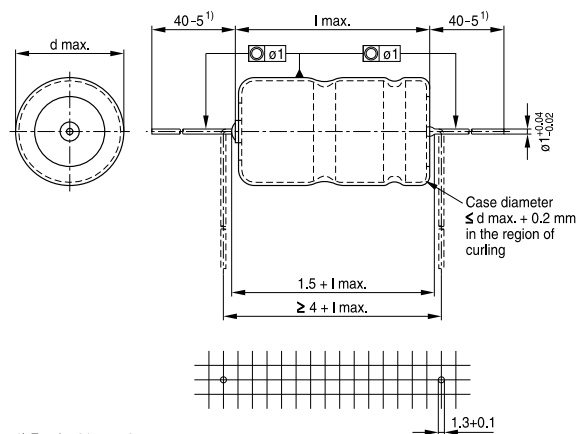


B41695, B41795

Optimized CV value – up to 150 °C

B41695, Axial-lead capacitors

Dimensional drawing

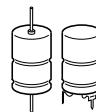


1) For $d = 21$ mm: 35-5

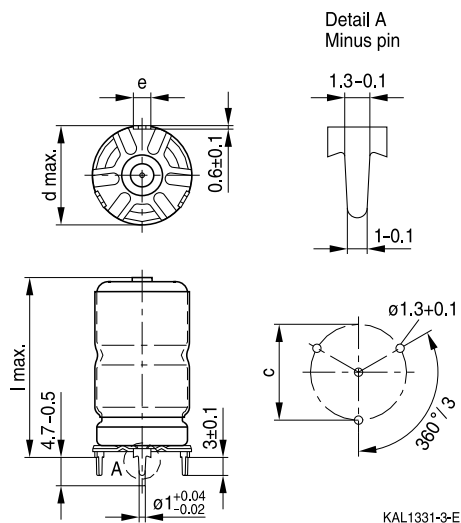
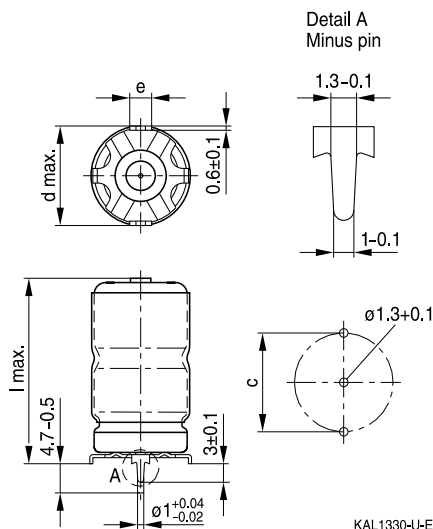
KAL1374-L

Dimensions, weights and packing units

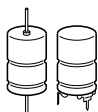
$d \times l$ mm	$d_{max} \times l_{max}$ mm	Approx. weight g	Packing units (pcs.)	
			Pallet	Reel
12×30	12.5×30.5	5.1	288	450
14×25	14.5×25.5	5.7	200	350
14×30	14.5×30.5	6.8	200	350
16×30	16.5×30.5	8.9	180	250
16×35	16.5×35.5	10.4	180	—
16×39	16.5×40	11.7	180	—
18×25	18.5×25.5	9.3	160	—
18×30	18.5×30.5	11.1	160	—
18×39	18.5×40	14.7	160	—
20×29	20.5×29.5	13.5	140	—
21×39	21.5×40	20.0	140	—
21×49	21.5×50	25.0	110	—


B41795, Soldering star capacitors
Dimensional drawings

 Mounting holes $d = 12 \text{ mm} \dots 14 \text{ mm}$

 Mounting holes $d = 16 \text{ mm} \dots 21 \text{ mm}$

Dimensions, weights and packing units

$d \times l$ mm	$d_{\max} \times l_{\max}$ mm	$c \pm 0.1$ mm	$e \pm 0.1$ mm	Approx. weight g	Packing units pcs.
12 × 30	13.5 × 32	12.5	3.0	5.4	480
14 × 25	15.5 × 27	14.5	3.0	6.1	480
14 × 30	15.5 × 32	14.5	3.0	7.2	480
16 × 30	17.5 × 32	16.5	3.0	9.4	300
16 × 35	17.5 × 37	16.5	3.0	10.9	200
16 × 39	17.5 × 41.5	16.5	3.0	12.2	200
18 × 25	19.5 × 27	18.5	3.0	9.9	300
18 × 30	19.5 × 32	18.5	3.0	11.8	300
18 × 39	19.5 × 41.5	18.5	3.0	15.4	200
21 × 39	22.5 × 41.5	21.5	3.5	21.0	324
21 × 49	22.5 × 51.5	21.5	3.5	26.0	264

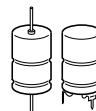


B41695, B41795

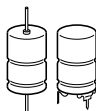
Optimized CV value – up to 150 °C

Overview of available types

V_R (V DC)	25	40	63	75
	Case dimensions d × l (mm)			
C_R (μF)				
220			12 × 30	12 × 30
270				14 × 30
330			14 × 30	
390				16 × 30
470		12 × 30	16 × 30	
560				16 × 39
680	12 × 30	14 × 30	16 × 39	
860				18 × 39 20 × 29
1000	14 × 25	16 × 30	18 × 39	
1100			20 × 29	
1200		16 × 35		21 × 39
1500	16 × 30	16 × 39		
1800	18 × 25		21 × 39	21 × 49
2200	18 × 30	18 × 39 20 × 29	21 × 49	
3300	18 × 39 20 × 29	21 × 39		
4400		21 × 49		
5000	21 × 39			
6800	21 × 49			


Case dimensions and ordering codes

V_R	C_R 100 Hz 20 °C μF	Case dimensions $d \times l$ mm	Ordering code Axial pallet	Ordering code Axial reel	Ordering code Soldering star
25	680	12 × 30	B41695A5687Q001	B41695A5687Q003	B41795A5687Q001
	1000	14 × 25	B41695A5108Q001	B41695A5108Q003	B41795A5108Q001
	1500	16 × 30	B41695A5158Q001	B41695A5158Q003	B41795A5158Q001
	1800	18 × 25	B41695A5188Q001		B41795A5188Q001
	2200	18 × 30	B41695A5228Q001		B41795A5228Q001
	3300	18 × 39	B41695A5338Q001		B41795A5338Q001
	3300	20 × 29	B41695B5338Q001		
	5000	21 × 39	B41695A5508Q001		B41795A5508Q001
	6800	21 × 49	B41695A5688Q001		B41795A5688Q001
40	470	12 × 30	B41695A7477Q001	B41695A7477Q003	B41795A7477Q001
	680	14 × 30	B41695A7687Q001	B41695A7687Q003	B41795A7687Q001
	1000	16 × 30	B41695A7108Q001	B41695A7108Q003	B41795A7108Q001
	1200	16 × 35	B41695A7128Q001		B41795A7128Q001
	1500	16 × 39	B41695A7158Q001		B41795A7158Q001
	2200	18 × 39	B41695A7228Q001		B41795A7228Q001
	2200	20 × 29	B41695B7228Q001		
	3300	21 × 39	B41695A7338Q001		B41795A7338Q001
	4400	21 × 49	B41695A7448Q001		B41795A7448Q001
63	220	12 × 30	B41695A8227Q001	B41695A8227Q003	B41795A8227Q001
	330	14 × 30	B41695A8337Q001	B41695A8337Q003	B41795A8337Q001
	470	16 × 30	B41695A8477Q001	B41695A8477Q003	B41795A8477Q001
	680	16 × 39	B41695A8687Q001		B41795A8687Q001
	1000	18 × 39	B41695A8108Q001		B41795A8108Q001
	1100	20 × 29	B41695A8118Q001		
	1800	21 × 39	B41695A8188Q001		B41795A8188Q001
	2200	21 × 49	B41695A8228Q001		B41795A8228Q001
75	220	12 × 30	B41695A0227Q001	B41695A0227Q003	B41795A0227Q001
	270	14 × 30	B41695A0277Q001	B41695A0277Q003	B41795A0277Q001
	390	16 × 30	B41695A0397Q001	B41695A0397Q003	B41795A0397Q001
	560	16 × 39	B41695A0567Q001		B41795A0567Q001
	860	18 × 39	B41695A0867Q001		B41795A0867Q001
	860	20 × 29	B41695B0867Q001		
	1200	21 × 39	B41695A0128Q001		B41795A0128Q001
	1800	21 × 49	B41695A0188Q001		B41795A0188Q001



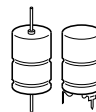
B41695, B41795

Optimized CV value – up to 150 °C

Technical data

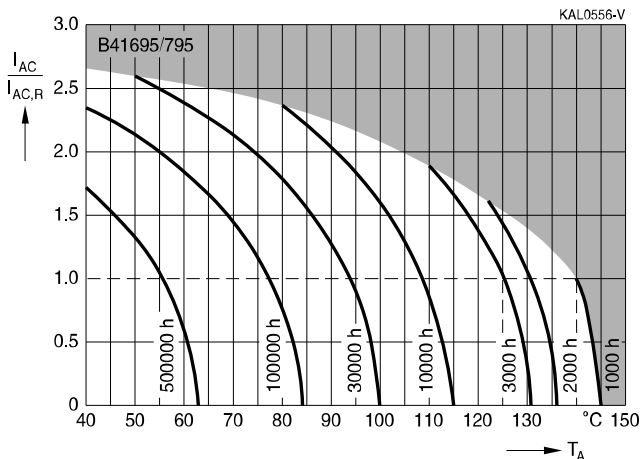
C_R	Case dimensions	ESR_{max} 100 Hz 20 °C μF	ESR_{max} 100 Hz –40 °C m Ω	ESR_{max} 10 kHz 20 °C m Ω	Z_{max} 100 kHz 20 °C m Ω	$I_{AC,max}$ 10 kHz 105 °C A	$I_{AC,max}$ 10 kHz 125 °C A	$I_{AC,R}$ 10 kHz 125 °C A	$I_{AC,max}^{1)}$ 10 kHz 150 °C A
$V_R = 25 V DC$									
680	12 × 30	320	2800	240	220	2.75	2.1	1.4	0.7
1000	14 × 25	230	1900	170	160	3.1	2.35	1.55	0.75
1500	16 × 30	155	1200	115	105	4.0	3.0	2.05	1.0
1800	18 × 25	125	1100	95	88	4.7	3.5	2.35	1.15
2200	18 × 30	110	950	85	80	5.0	3.8	2.5	1.2
3300	18 × 39	75	700	58	55	7.0	5.3	3.5	1.7
3300	20 × 29	70	700	53	50	7.0	5.3	3.5	1.7
5000	21 × 39	48	500	36	35	10	7.5	5.0	2.5
6800	21 × 49	36	350	28	28	12.6	9.5	6.3	3.1
$V_R = 40 V DC$									
470	12 × 30	290	3000	185	180	3.0	2.3	1.5	0.75
680	14 × 30	205	2200	135	130	3.8	2.85	1.9	0.85
1000	16 × 30	145	1500	95	91	4.6	3.45	2.3	1.15
1200	16 × 35	120	1200	80	76	5.4	4.1	2.7	1.35
1500	16 × 39	100	1000	65	62	6.4	4.8	3.2	1.6
2200	18 × 39	75	700	50	48	7.2	5.4	3.6	1.8
2200	20 × 29	68	700	45	44	7.3	5.5	3.7	1.8
3300	21 × 39	45	500	30	30	10.4	7.8	5.2	2.6
4400	21 × 49	35	350	23	25	13.3	9.9	6.6	3.3
$V_R = 63 V DC$									
220	12 × 30	410	3000	200	190	2.95	2.2	1.5	0.75
330	14 × 30	275	2200	140	133	3.75	2.8	1.9	0.95
470	16 × 30	200	1500	100	105	4.5	3.3	2.25	1.1
680	16 × 39	140	1100	70	67	6.2	4.6	3.1	1.5
1000	18 × 39	100	750	55	54	7.1	5.4	3.6	1.8
1100	20 × 29	87	700	45	45	7.3	5.5	3.7	1.8
1800	21 × 39	55	500	30	30	10.6	7.9	5.3	2.6
2200	21 × 49	45	360	24	24	13.2	9.9	6.6	3.3
$V_R = 75 V DC$									
220	12 × 30	410	3000	200	190	2.95	2.2	1.5	0.75
270	14 × 30	275	2200	140	133	3.75	2.8	1.9	0.95
390	16 × 30	200	1500	100	105	4.5	3.3	2.25	1.1
560	16 × 39	140	1100	70	67	6.2	4.6	3.1	1.5
860	18 × 39	100	750	55	54	7.1	5.4	3.6	1.8
860	20 × 29	87	700	45	45	7.3	5.5	3.7	1.8
1200	21 × 39	55	500	30	30	10.6	7.9	5.3	2.6
1800	21 × 49	45	360	24	24	13.2	9.9	6.6	3.3

1) $I_{AC,max}$ (10 kHz, 150 °C) measured at $V_R = 20 V DC, 35 V DC, 55 V DC, 65 V DC$ instead of $V_R = 25 V DC, 40 V DC, 63 V DC, 75 V DC$.



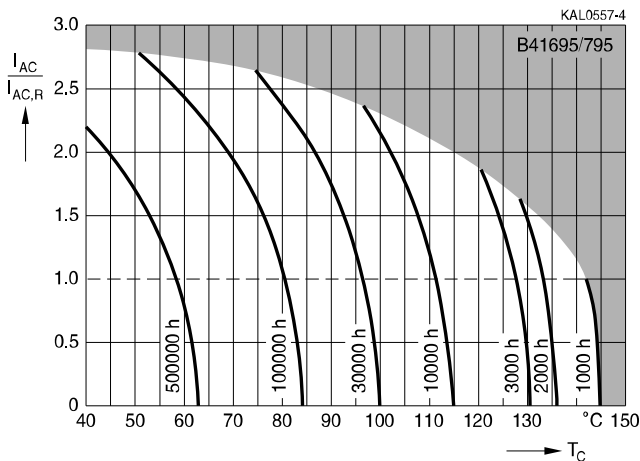
Useful life¹⁾

depending on ambient temperature T_A under ripple current operating conditions at V_R

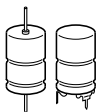


Useful life¹⁾

depending on case temperature T_C under ripple current operating conditions at V_R



1) Refer to chapter "General technical information, 5 Useful life" on how to interpret useful life.



B41695, B41795

Optimized CV value – up to 150 °C

Useful life¹⁾

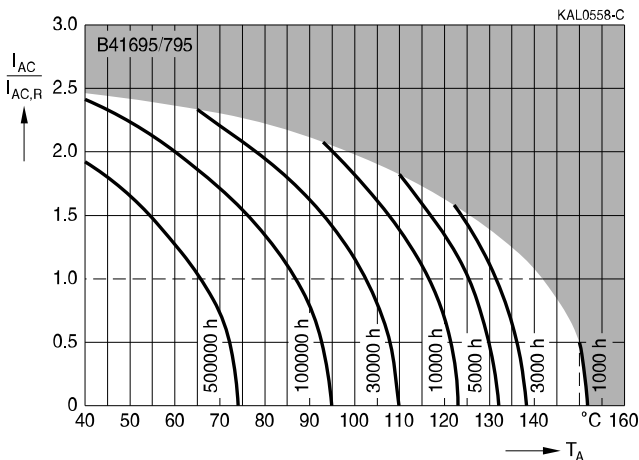
depending on ambient temperature T_A under ripple current operating conditions at V_{op}

$V_R = 25 \text{ V}$: $V_{op} \leq 20 \text{ V}$

$V_R = 40 \text{ V}$: $V_{op} \leq 35 \text{ V}$

$V_R = 63 \text{ V}$: $V_{op} \leq 55 \text{ V}$

$V_R = 75 \text{ V}$: $V_{op} \leq 65 \text{ V}$



Useful life¹⁾

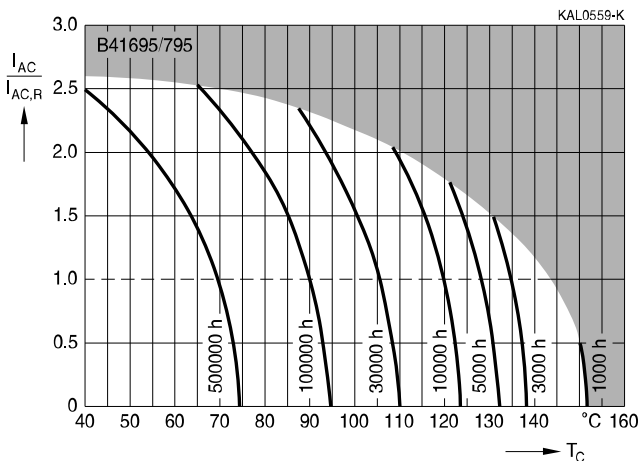
depending on case temperature T_C under ripple current operating conditions at V_{op}

$V_R = 25 \text{ V}$: $V_{op} \leq 20 \text{ V}$

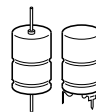
$V_R = 40 \text{ V}$: $V_{op} \leq 35 \text{ V}$

$V_R = 63 \text{ V}$: $V_{op} \leq 55 \text{ V}$

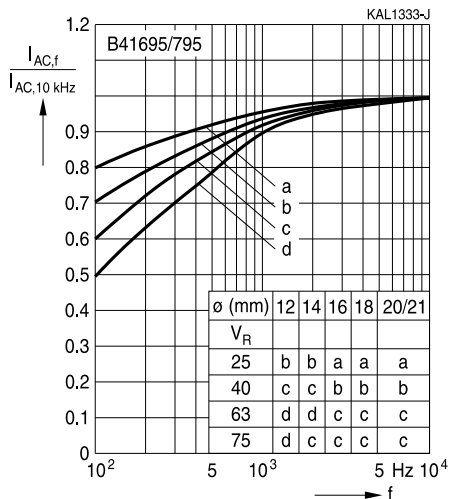
$V_R = 75 \text{ V}$: $V_{op} \leq 65 \text{ V}$



1) Refer to chapter "General technical information, 5 Useful life" on how to interpret useful life.

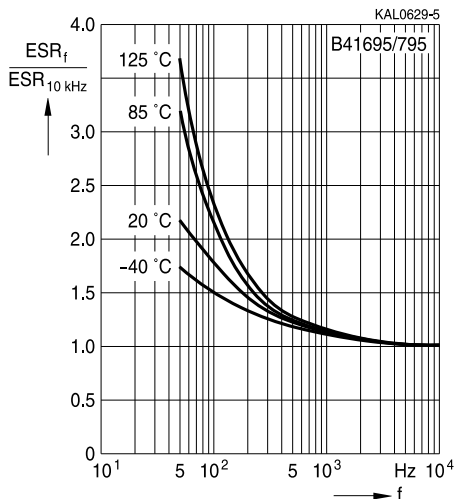


Frequency factor of permissible ripple current I_{AC} versus frequency f



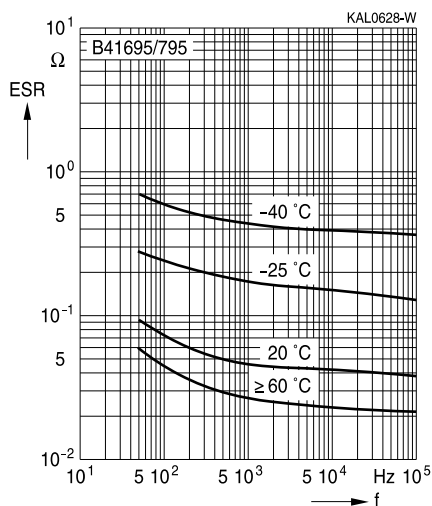
Frequency characteristics of ESR

Typical behavior



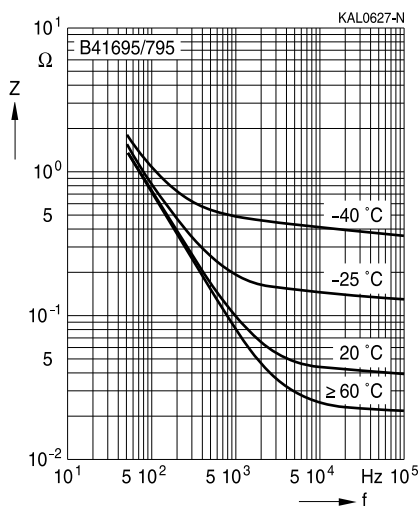
Equivalent series resistance ESR versus frequency f

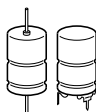
Typical behavior for 2200 µF/40 V



Impedance Z versus frequency f

Typical behavior for 2200 µF/40 V





B41695, B41795

Optimized CV value – up to 150 °C

Cautions and warnings

Personal safety

The electrolytes used by EPCOS have been optimized both with a view to the intended application and with regard to health and environmental compatibility. They do not contain any solvents that are detrimental to health, e.g. dimethyl formamide (DMF) or dimethyl acetamide (DMAC).

Furthermore, some of the high-voltage electrolytes used by EPCOS are self-extinguishing.

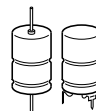
As far as possible, EPCOS does not use any dangerous chemicals or compounds to produce operating electrolytes. However, in exceptional cases, such materials must be used in order to achieve specific physical and electrical properties because no alternative materials are currently known. However, the amount of dangerous materials used in our products is limited to an absolute minimum.

Materials and chemicals used in EPCOS aluminum electrolytic capacitors are continuously adapted in compliance with the EPCOS Corporate Environmental Policy and the latest EU regulations and guidelines such as RoHS, REACH/SVHC, GADSL, and ELV.

MDS (Material Data Sheets) are available on the EPCOS website for all types listed in the data book. MDS for customer specific capacitors are available upon request.

MSDS (Material Safety Data Sheets) are available for all of our electrolytes upon request.

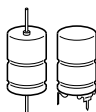
Nevertheless, the following rules should be observed when handling aluminum electrolytic capacitors: No electrolyte should come into contact with eyes or skin. If electrolyte does come into contact with the skin, wash the affected areas immediately with running water. If the eyes are affected, rinse them for 10 minutes with plenty of water. If symptoms persist, seek medical treatment. Avoid inhaling electrolyte vapor or mists. Workplaces and other affected areas should be well ventilated. Clothing that has been contaminated by electrolyte must be changed and rinsed in water.



Product safety

The table below summarizes the safety instructions that must be observed without fail. A detailed description can be found in the relevant sections of chapter "General technical information".

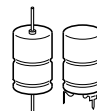
Topic	Safety information	Reference chapter "General technical information"
Polarity	Make sure that polar capacitors are connected with the right polarity.	1 "Basic construction of aluminum electrolytic capacitors"
Reverse voltage	Voltages polarity classes should be prevented by connecting a diode.	3.1.6 "Reverse voltage"
Mounting position of screw-terminal capacitors	Do not mount the capacitor with the terminals (safety vent) upside down.	11.1. "Mounting positions of capacitors with screw terminals"
Robustness of terminals	The following maximum tightening torques must not be exceeded when connecting screw terminals: M5: 2.5 Nm M6: 4.0 Nm	11.3 "Mounting torques"
Mounting of single-ended capacitors	The internal structure of single-ended capacitors might be damaged if excessive force is applied to the lead wires. Avoid any compressive, tensile or flexural stress. Do not move the capacitor after soldering to PC board. Do not pick up the PC board by the soldered capacitor. Do not insert the capacitor on the PC board with a hole space different to the lead space specified.	11.4 "Mounting considerations for single-ended capacitors"
Soldering	Do not exceed the specified time or temperature limits during soldering.	11.5 "Soldering"
Soldering, cleaning agents	Do not allow halogenated hydrocarbons to come into contact with aluminum electrolytic capacitors.	11.6 "Cleaning agents"
Upper category temperature	Do not exceed the upper category temperature.	7.2 "Maximum permissible operating temperature"
Passive flammability	Avoid external energy, such as fire or electricity.	8.1 "Passive flammability"



B41695, B41795

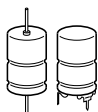
Optimized CV value – up to 150 °C

Topic	Safety information	Reference chapter "General technical information"
Active flammability	Avoid overload of the capacitors.	8.2 "Active flammability"
Maintenance	Make periodic inspections of the capacitors. Before the inspection, make sure that the power supply is turned off and carefully discharge the electricity of the capacitors. Do not apply any mechanical stress to the capacitor terminals.	10 "Maintenance"
Storage	Do not store capacitors at high temperatures or high humidity. Capacitors should be stored at +5 to +35 °C and a relative humidity of $\leq 75\%$.	7.3 Storage conditions
		Reference chapter "Capacitors with screw terminals"
Breakdown strength of insulating sleeves	Do not damage the insulating sleeve, especially when ring clips are used for mounting.	"Screw terminals – accessories"



Symbols and terms

Symbol	English	German
C	Capacitance	Kapazität
C_R	Rated capacitance	Nennkapazität
C_S	Series capacitance	Serienkapazität
$C_{S,T}$	Series capacitance at temperature T	Serienkapazität bei Temperatur T
C_f	Capacitance at frequency f	Kapazität bei Frequenz f
d	Case diameter, nominal dimension	Gehäusedurchmesser, Nennmaß
d_{max}	Maximum case diameter	Maximaler Gehäusedurchmesser
ESL	Self-inductance	Eigeninduktivität
ESR	Equivalent series resistance	Ersatzserienwiderstand
ESR_f	Equivalent series resistance at frequency f	Ersatzserienwiderstand bei Frequenz f
ESR_T	Equivalent series resistance at temperature T	Ersatzserienwiderstand bei Temperatur T
f	Frequency	Frequenz
I	Current	Strom
I_{AC}	Alternating current (ripple current)	Wechselstrom
$I_{AC,rms}$	Root-mean-square value of alternating current	Wechselstrom, Effektivwert
$I_{AC,f}$	Ripple current at frequency f	Wechselstrom bei Frequenz f
$I_{AC,max}$	Maximum permissible ripple current	Maximal zulässiger Wechselstrom
$I_{AC,R}$	Rated ripple current	Nennwechselstrom
$I_{AC,R} (B)$	Rated ripple current for base cooling	Nennwechselstromstrom für Bodenkühlung
I_{leak}	Leakage current	Reststrom
$I_{leak,op}$	Operating leakage current	Betriebsreststrom
l	Case length, nominal dimension	Gehäuselänge, Nennmaß
l_{max}	Maximum case length (without terminals and mounting stud)	Maximale Gehäuselänge (ohne Anschlüsse und Gewindebolzen)
R	Resistance	Widerstand
R_{ins}	Insulation resistance	Isolationswiderstand
R_{symm}	Balancing resistance	Symmetrierwiderstand
T	Temperature	Temperatur
ΔT	Temperature difference	Temperaturdifferenz
T_A	Ambient temperature	Umgebungstemperatur
T_C	Case temperature	Gehäusetemperatur
T_B	Capacitor base temperature	Temperatur des Becherbodens
t	Time	Zeit
Δt	Period	Zeitraum
t_b	Service life (operating hours)	Brauchbarkeitsdauer (Betriebszeit)



B41695, B41795

Optimized CV value – up to 150 °C

Symbol	English	German
V	Voltage	Spannung
V _F	Forming voltage	Formierspannung
V _{op}	Operating voltage	Betriebsspannung
V _R	Rated voltage, DC voltage	Nennspannung, Gleichspannung
V _S	Surge voltage	Spitzenspannung
X _C	Capacitive reactance	Kapazitiver Blindwiderstand
X _L	Inductive reactance	Induktiver Blindwiderstand
Z	Impedance	Scheinwiderstand
Z _T	Impedance at temperature T	Scheinwiderstand bei Temperatur T
tan δ	Dissipation factor	Verlustfaktor
λ	Failure rate	Ausfallrate
ε ₀	Absolute permittivity	Elektrische Feldkonstante
ε _r	Relative permittivity	Dielektrizitätszahl
ω	Angular velocity; $2 \cdot \pi \cdot f$	Kreisfrequenz; $2 \cdot \pi \cdot f$

Note

All dimensions are given in mm.

Important notes

The following applies to all products named in this publication:

1. Some parts of this publication contain **statements about the suitability of our products for certain areas of application**. These statements are based on our knowledge of typical requirements that are often placed on our products in the areas of application concerned. We nevertheless expressly point out **that such statements cannot be regarded as binding statements about the suitability of our products for a particular customer application**. As a rule, EPCOS is either unfamiliar with individual customer applications or less familiar with them than the customers themselves. For these reasons, it is always ultimately incumbent on the customer to check and decide whether an EPCOS product with the properties described in the product specification is suitable for use in a particular customer application.
2. We also point out that **in individual cases, a malfunction of electronic components or failure before the end of their usual service life cannot be completely ruled out in the current state of the art, even if they are operated as specified**. In customer applications requiring a very high level of operational safety and especially in customer applications in which the malfunction or failure of an electronic component could endanger human life or health (e.g. in accident prevention or lifesaving systems), it must therefore be ensured by means of suitable design of the customer application or other action taken by the customer (e.g. installation of protective circuitry or redundancy) that no injury or damage is sustained by third parties in the event of malfunction or failure of an electronic component.
3. **The warnings, cautions and product-specific notes must be observed.**
4. In order to satisfy certain technical requirements, **some of the products described in this publication may contain substances subject to restrictions in certain jurisdictions (e.g. because they are classed as hazardous)**. Useful information on this will be found in our Material Data Sheets on the Internet (www.epcos.com/material). Should you have any more detailed questions, please contact our sales offices.
5. We constantly strive to improve our products. Consequently, **the products described in this publication may change from time to time**. The same is true of the corresponding product specifications. Please check therefore to what extent product descriptions and specifications contained in this publication are still applicable before or when you place an order. We also **reserve the right to discontinue production and delivery of products**. Consequently, we cannot guarantee that all products named in this publication will always be available. The aforementioned does not apply in the case of individual agreements deviating from the foregoing for customer-specific products.
6. Unless otherwise agreed in individual contracts, **all orders are subject to the current version of the "General Terms of Delivery for Products and Services in the Electrical Industry" published by the German Electrical and Electronics Industry Association (ZVEI)**.
7. The trade names EPCOS, BAOKE, Alu-X, CeraDiode, CeraLink, CSMP, CSSP, CTVS, DeltaCap, DigiSiMic, DSSP, FilterCap, FormFit, MiniBlue, MiniCell, MKD, MKK, MLSC, MotorCap, PCC, PhaseCap, PhaseCube, PhaseMod, PhiCap, SIFERRIT, SIFI, SIKOREL, SilverCap, SIMDAD, SiMic, SIMID, SineFormer, SIOV, SIP5D, SIP5K, ThermoFuse, WindCap are **trademarks registered or pending** in Europe and in other countries. Further information will be found on the Internet at www.epcos.com/trademarks.

X-ON Electronics

Largest Supplier of Electrical and Electronic Components

Click to view similar products for [Aluminium Electrolytic Capacitors - Radial Leaded](#) *category:*

Click to view products by [EPCOS](#) *manufacturer:*

Other Similar products are found below :

[NRELS102M35V16X16C.140LLF](#) [ESRG160ETC100MD07D](#) [227RZS050M](#) [335CKR250M](#) [476CKH100MSA](#) [477CKR100M](#)
[107CKR010M](#) [107CKH063MSA](#) [RJH-25V222MI9#](#) [RJH-35V221MG5#](#) [B43827A1106M8](#) [RJH-50V221MH6#](#) [EKYA500ELL470MF11D](#)
[B41022A5686M6](#) [ESRG250ELL101MH09D](#) [EKMA160EC3101MF07D](#) [RJB-10V471MG3#](#) [ESMG160ETD221MF11D](#)
[EKZH160ETD152MJ20S](#) [RJH-35V122MJ6#](#) [EGXF630ELL621ML20S](#) [RBD-25V100KE3#N](#) [EKMA350ELL100ME07D](#)
[ESMG160ETD101ME11D](#) [ELXY100ETD102MJ20S](#) [EGXF500ELL561ML15S](#) [EKMG350ETD471MJ16S](#) [35YXA330MEFC10X12.5](#)
[RXW471M1ESA-0815](#) [ELXZ630ELL221MJ25S](#) [ERR1HM1R0D11OT](#) [LPE681M30060FVA](#) [LPL471M22030FVA](#) [HFE221M25030FVA](#)
[LKMD1401H221MF](#) [B41888G6108M000](#) [EKMA160ETD470MF07D](#) [UHW1J102MHD6](#) [EKMG500ETD221MJC5S](#) [LKMK2502W101MF](#)
[LKMD1401H181MF](#) [LKMI2502G820MF](#) [LKMJ2001J122MF](#) [LKML2501C472MF](#) [LKMJ4002C681MF](#) [450MXH330MEFCSN25X45](#)
[450MXK330MA2RFC22X50](#) [63ZLH560MEFCG412.5X30](#) [ELH2DM331O25KT](#) [ELH2DM471P30KT](#)