

LED COLOR = RED DIFFUSED

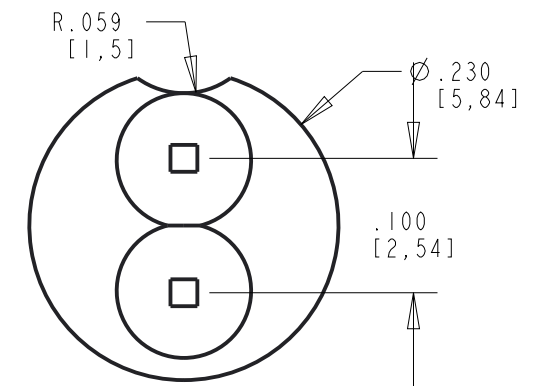
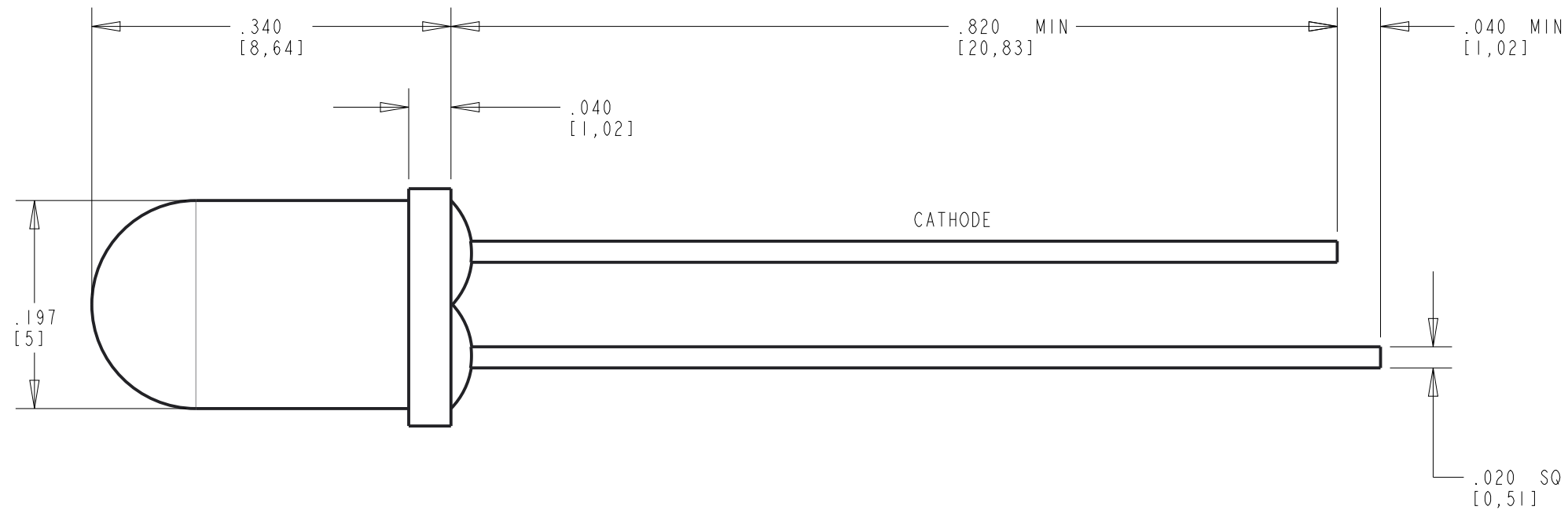
OPERATING CHARACTERISTICS AT 25°C AMBIENT

CHARACTERISTICS	MIN	TYP	MAX	UNITS	TEST CONDITIONS
LUMINOUS INTENSITY	19	40	90	mcd	$I_f = 10 \text{ mA}$
FORWARD VOLTAGE		2.0	2.6	V	$I_f = 20 \text{ mA}$
REVERSE CURRENT			100	μA	$V_R = 5\text{V}$
PEAK WAVELENGTH		635		nm	
DOMINANT WAVELENGTH		623		nm	
VIEWING ANGLE		50		Degree	

RoHS Compliant 521-9441F Thru hole Single Color LED

Part Numbers with the "F" suffix ending are RoHS Compliant.
 Example: 521-9441F
 The bag packaging is marked with "RoHS Compliant" label or equivalent markings.
 Parts can be wave soldered, dip soldered or hand soldered using typical lead-free soldering process with max 260°C temp. for 5 sec.

REV	ECN NO	REVISIONS	DRN	CKD	APP	DATE
A		NEW RELEASE	SM			
B		ADDED DOMINANT WAVELENGTH, UPDATED MODEL AND SPECS	LD		NO	2-28-22




ABSOLUTE MAXIMUM RATING AT 25°C AMBIENT	UNITS	RED DIFF.
POWER DISSIPATION	mW	81
CONTINUOUS FORWARD CURRENT	mA	30
DERATE LINEARLY FROM 40°C	mA/°C	0.71
PEAK PULSE CURRENT (1/5 DUTY CYCLE, 0.1 ms PULSE WIDTH)	mA	90
LEAD SOLDERING TEMPERATURE, 5 SEC., 1/16" FROM BASE	°C	260
OPERATING TEMPERATURE	°C	-40 TO +85
STORAGE TEMPERATURE	°C	-40 TO +100

NOTES:

1. DIALIGHT PART NO. 521-9441F
3. LEAD SPACING MEASURED NEAR EPOXY PACKAGE.
4. AlInGaP RED DIFFUSED

THIS DRAWING AND THE CONTENTS HEREIN ARE CONFIDENTIAL AND THE SOLE PROPERTY OF DIALIGHT CORP. REPRODUCTION OF THIS DRAWING OR CONSTRUCTION OF ANY PARTS WITHIN THIS DRAWING ARE FORBIDDEN WITHOUT THE WRITTEN CONSENT OF DIALIGHT CORP.

SCALE: 7.000	DRAWING NUMBER	REV
ALL DIM'S: INCH (mm)	C-17460	B
TOLERANCES: UNLESS OTHERWISE SPECIFIED	TITLE 5 mm LED RED DIFFUSED 650nm RoHS COMPLIANT	
FRACTIONS: ±1/64 DECIMALS (.XX): ±.01 DECIMALS (.XXX): ±.010 DECIMALS (.XXXX): ±.0005 ANGLES: ±1°	MATERIAL	
FINISH	 1501 ROUTE 34 SOUTH FARMINGDALE, NJ 07727 (732) 919-3119 www.dialight.com	
FSCM 83330	SHEET 1 OF 1	FAMILY TABLE:

X-ON Electronics

Largest Supplier of Electrical and Electronic Components

Click to view similar products for [Standard LEDs - Through Hole category:](#)

Click to view products by [Dialight manufacturer:](#)

Other Similar products are found below :

[LTL-10234W](#) [LTL-10254W](#) [LTL-1214A](#) [LTL-2231AT](#) [LTL2H3HRKL13](#) [LTL-3251A](#) [LTL-4262N](#) [LTL-5234](#) [LTL87HTBK](#) [LTW-87HD4B](#) [7383/V7C3-BSTA-L/PR3/MS](#) [LNX998CKBDA](#) [LP379PPG1C0G0300001](#) [SLR-342DUT32](#) [SLR-342VCT32](#) [SLR-342VCTB7](#) [SLX-LX3044GD](#) [SLX-LX3044ID](#) [SLX-LX3044YD](#) [SSS-LX4673ID-410B](#) [1L0532Y24I0TD001](#) [264-7SYGD/S530-E2](#) [HLMP1385](#) [LTL-10224W](#) [LTL-1224A](#) [LTL-1BEHJ-012](#) [LTL-307YE-012](#) [LTL-403HR](#) [LTL-4231N-0L1](#) [LU7-E-B](#) [4380H1](#) [L53SRC/E-Z](#) [L-7679C1ZGC](#) [4302T1-5V](#) [4306D23](#) [4363D1/5](#) [WP1503SRC/J4](#) [WP153GDT](#) [WP153YDT](#) [WP1543SGC](#) [WP1543SURC](#) [WP7143SEC/H](#) [Z-221A](#) [ZD0172](#) [SLR-332MCT32](#) [SLR-342DU3F](#) [SLR-56MCT32](#) [NSPL500S-F1F2/RS](#) [ZD0154](#) [WP93WEGW](#)