

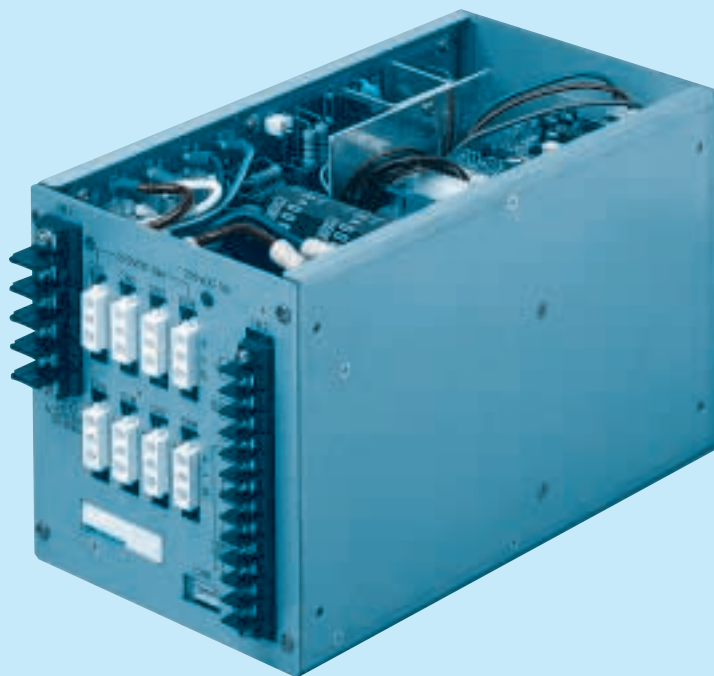
# STA5000T

STA 5000 T - ☐

① ② ③ ④



RoHS



- ① Series name
- ② Output wattage
- ③ Triple input phase
- ④ Optional \*1  
R :with Sequence unit

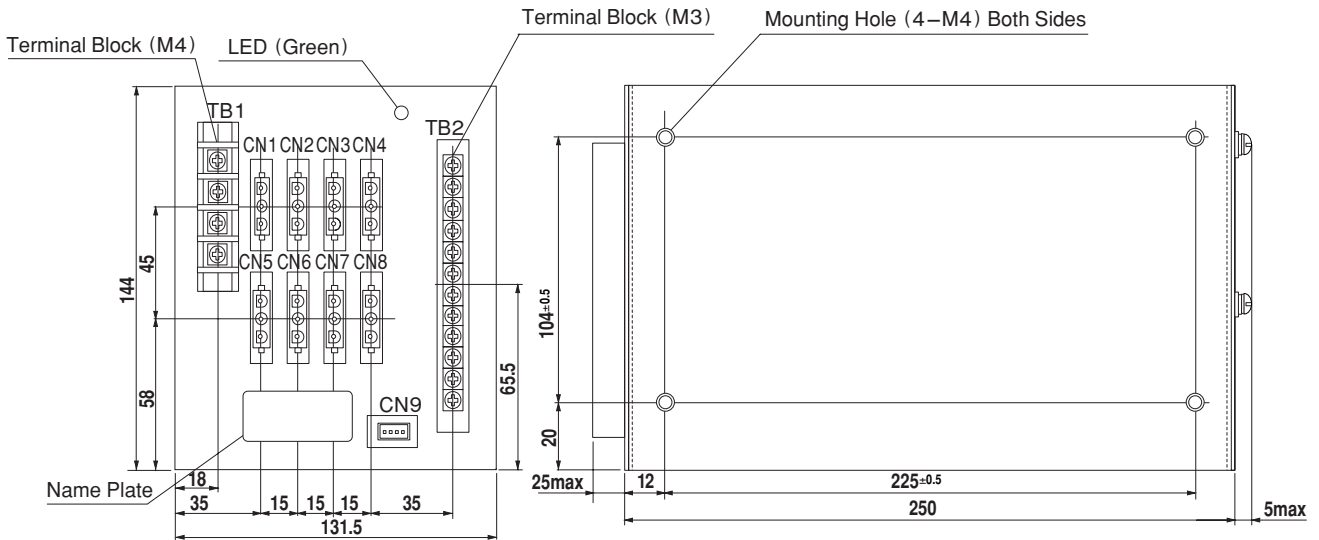
\* For connection of loads except the series DBS, please contact Cosel development department.  
\* Never make a short-circuit between the output pins. It may severely damage the unit.

## SPECIFICATIONS

	MODEL	STA5000T
INPUT	VOLTAGE[V]	AC170 - 264 3 $\phi$ (Rated input voltage : AC200V)
	FREQUENCY[Hz]	50/60, (47 - 63)
	INRUSH CURRENT[A] ACIN 200V	50typ
	POWER FACTOR	0.9typ (ACIN 200V)
	EFFICIENCY[%]	97.5typ (ACIN 200V)
OUTPUT	WATTAGE[W]	5,000
	OUTPUT VOLTAGE[V]	DC230 - 370 (Changes depending on the input voltage)
PROTECTION CIRCUIT AND OTHERS	OPERATING INDICATION	LED (Green)
	OVERCURRENT PROTECTION	By means of fuse
	THERMAL PROTECTION	Provided
	REMOTE ON/OFF OUTPUT	Provided (Isolated from output)
	ALARM OUTPUT	Provided (Isolated from output)
	SYSTEM ON/OFF INPUT	Provided (Isolated from output, optional)
ISOLATION	REMOTE SIGNAL ON/OFF OUTPUT	Provided (Isolated from output, optional)
	INPUT-FG	AC2,000V 1minute, Cutoff current = 10mA, DC500V 50M $\Omega$ min (At Room Temperature)
	INPUT-RS ON/OFF, ALM	AC2,000V 1minute, Cutoff current=10mA, DC500V 50M $\Omega$ min (At Room Temperature)
	RS ON/OFF, ALM-FG	AC500V 1minute, Cutoff current=50mA, DC500V 50M $\Omega$ min (At Room Temperature)
ENVIRONMENT	OPERATING TEMP	-10 - 50°C Forced air
	STORAGE TEMP	-20 - 75°C
	VIBRATION	10 - 55Hz, 19.6m/s <sup>2</sup> (2G), 3minutes period, 60minutes each along X, Y and Z axis
	IMPACT	196.1m/s <sup>2</sup> (20G), 11ms, once each X, Y and Z axis
SAFETY AND NOISE REGULATIONS	AGENCY APPROVALS	UL60950-1, C-UL (CSA60950-1), EN60950-1
	CONDUCTED NOISE	Complies with FCC-B, CISPR22-classB, EN55022-B

\*1 Please contact us about safety approvals for the model with option.

## External view



TB1  
TYPE:F2331B 4P

pin no.	Function
1	AC (R)
2	AC (S)
3	AC (T)
4	FG

CN1 – CN8  
TYPE:350825–1

pin no.	Function
1	DC (+V)
2	DC (–V)
3	FG

Mating Connector:350766–1  
 Terminal:350547–1  
 or 350552–1

CN9  
TYPE:B4B–XH

pin no.	Function
1	REMOTE ON/OFF (+)
2	REMOTE ON/OFF (–)
3	AL OUT (+)
4	AL OUT (–)

Mating Connector:XHP–4  
 Terminal: SXH–001T–P0.6  
 or SXH–002T–P0.6

TB2 (STA5000T–R)  
TYPE:F2361A–13.2L–12P

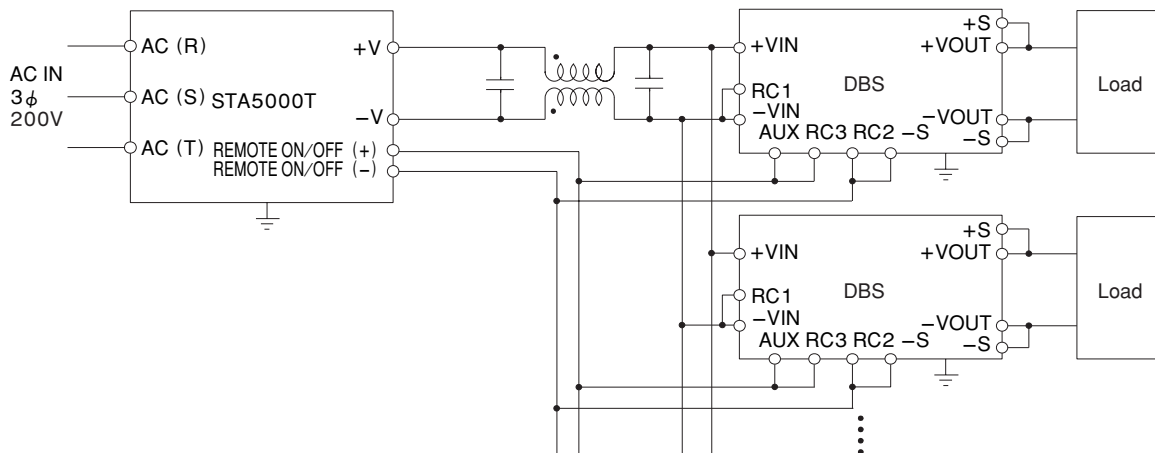
pin no.	Function
1	ALM (+)
2	ALM (–)
3	SYSTEM ON/OFF (+)
4	SYSTEM ON/OFF (–)
5	R/S1 ON/OFF (+)
6	R/S1 ON/OFF (–)
7	R/S2 ON/OFF (+)
8	R/S2 ON/OFF (–)
9	R/S3 ON/OFF (+)
10	R/S3 ON/OFF (–)
11	R/S4 ON/OFF (+)
12	R/S4 ON/OFF (–)

※Keep drawing current per pin below 8A of CN1 – CN8.

## Performance data

### SYSTEM CONCEPT

#### – Sample system configuration –



## X-ON Electronics

Largest Supplier of Electrical and Electronic Components

*Click to view similar products for [Switching Power Supplies](#) category:*

*Click to view products by [Cosel](#) manufacturer:*

Other Similar products are found below :

[70841011](#) [73-551-0005](#) [73-551-0048](#) [PS3E-B12F](#) [PS3E-E12F](#) [AAD600S-4-OP](#) [R22095](#) [KD0204](#) [9021](#) [LDIN100150](#) [LPM000-BBAR-01](#)  
[LPX17S-C](#) [EVS57-10R6/R](#) [FP80](#) [FRV7000G](#) [22929](#) [PS3E-F12F](#) [CQM1IA121](#) [40370121900](#) [VI-PU22-EXX](#) [40370121910](#) [LDIN5075](#)  
[LPM615-CHAS](#) [LPX140-C](#) [09-160CFG](#) [70841025](#) [VPX3000-CBL-DC](#) [VI-LUL-IU](#) [LPM000-BBAR-05](#) [LPM000-BBAR-08](#) [LPM124-](#)  
[OUTA1-48](#) [LPM000-BBAR-07](#) [LPM109-OUTA1-10](#) [LPM616-CHAS](#) [08-30466-1055G](#) [08-30466-2175G](#) [08-30466-2125G](#) [DMB-EWG](#)  
[TVQF-1219-18S](#) [6504-226-2101](#) [CQM1IPS01](#) [SP-300-5](#) [CQM1-IPS02](#) [VI-MUL-ES](#) [22829](#) [08-30466-0065G](#) [VI-RU031-EWWX](#) [08-30466-](#)  
[0028G](#) [EP3000AC48INZ](#) [VP-C2104853](#)