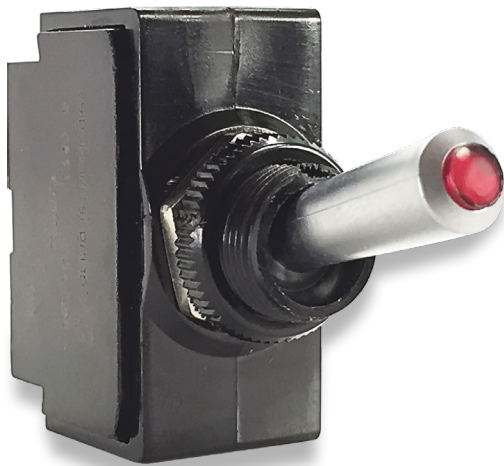
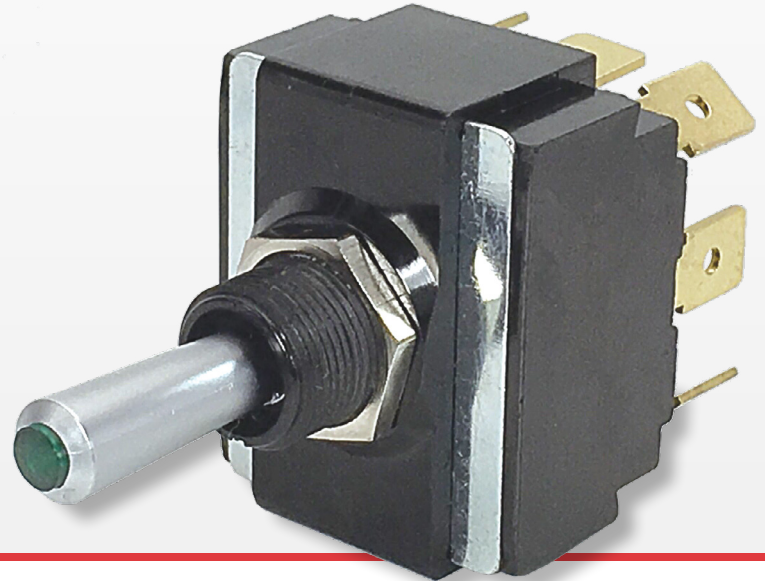


# LT-Series

Toggle Switches

**PRODUCT WEBPAGE**

*request sample, configure part*



The LT-Series illuminated toggle switches feature up to a three-color lighting sequence from a single lamp. These lighted toggles contain neoprene bushing seals for dust and moisture protection. A variety of circuits and terminations are available.

**1-2**  
Poles

**10-15**  
Amps

**125, 250**  
VAC

**12-28**  
VDC

## Typical Applications

- Marine
- Transportation

# Tech Specs

## Dielectric Strength

1000V - live to dead metal parts

## Electrical Life

50,000 cycles - maintained  
25,000 cycles - momentary

## Operating Temperature

32°F to 185°F (0° to 85°C)

# Ordering Scheme

Sample Part Number **LT-1561 - 1 30 - 012**

Selection 1 2 3 4

### 1. SERIES

10A 250VAC, 15A 125VAC, 3/4 HP 125-250VAC, 15A 12-28VDC				
Single Pole	Solder Lug	.250 Tab QC	Screw Terms	Wire Leads
On-None-Off	LT-1510	LT-1511	LT-1514	LT-1515
On-None-(Off)	LT-1520	LT-1521	LT-1524	LT-1525
(On)-None-Off	LT-1530	LT-1531	LT-1534	LT-1535
On-None-On	LT-1540	LT-1541	LT-1544	LT-1545
On-None-(On)	LT-1550	LT-1551	LT-1554	LT-1555
On-Off-On	LT-1560	LT-1561	LT-1564	LT-1565
On-Off-(On)	LT-1570	LT-1571	LT-1574	LT-1575
(On)-Off-(On)	LT-1580	LT-1581	LT-1584	LT-1585
Double Pole	Solder Lug	.250 Tab QC	Screw Terms	Wire Leads
On-None-Off	LT-2510	LT-2511	LT-2514	LT-2515
On-None-(Off)	LT-2520	LT-2521	LT-2524	LT-2525
(On)-None-Off	LT-2530	LT-2531	LT-2534	LT-2535
On-None-On	LT-2540	LT-2541	LT-2544	LT-2545
On-None-(On)	LT-2550	LT-2551	LT-2554	LT-2555
On-Off-On	LT-2560	LT-2561	LT-2564	LT-2565
On-Off-(On)	LT-2570	LT-2571	LT-2574	LT-2575
(On)-Off-(On)	LT-2580	LT-2581	LT-2584	LT-2585

### 2. ACTUATOR STYLE

Paddle <sup>1</sup>	Snapkap Style <sup>2</sup>
1 Clear Paddle	5 Bright Chrome
4 Solid Color Paddle	6 Satin Chrome
	7 Black Molded

- Notes:
- 1 Solid color paddle available with lighting sequence 01, 02, 10 or 20.
  - 2 SnapCap Toggle Lenses are available separately. Consult factory.
  - 3 Independent lamp is standard. Dependent lamp with ON-OFF function (including momentary) is available with Lighting Sequences 10, 20, 30, 40 and 50. (No light in OFF position.)
  - 4 Green and blue not recommended with 125 volt or 250 volt neon lamps.
  - 5 Additional terminations available. Consult factory for details.
  - 6 Ignition protected (UL 1500) construction is available, consult factory for details.
  - ( ) Indicates momentary function.

[Configure Complete Part Number >](#) [Browse Standard Parts >](#)

### 3. LIGHTING SEQUENCE 3,4

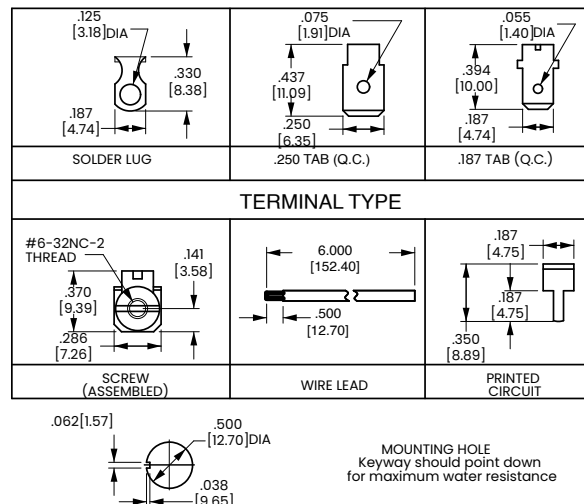
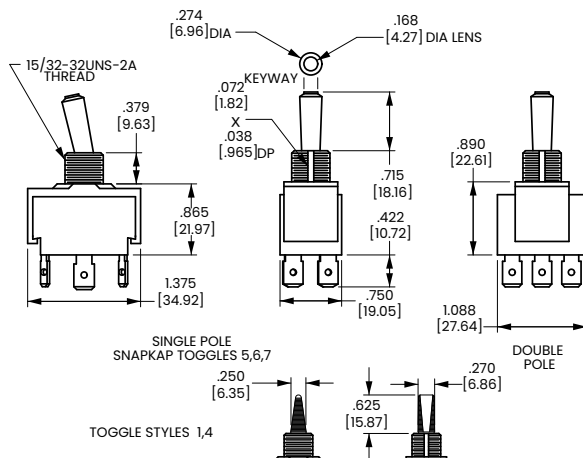
	position 1	position 2	position 3
01	red	red	red
02	amber	amber	amber
03	green	green	green
10	red	---	none
11	red	clear	red
12	red	clear	amber
13	red	clear	green
14	red	clear	blue
15	red	clear	clear
20	amber	---	none
21	amber	clear	red
22	amber	clear	amber
23	amber	clear	green
24	amber	clear	blue
25	amber	clear	clear
30	green	---	none
31	green	clear	red
32	green	clear	amber
33	green	clear	green
34	green	clear	blue
35	green	clear	clear
40	blue	---	none
41	blue	clear	red
42	blue	clear	amber
43	blue	clear	green
44	blue	clear	blue
45	blue	clear	clear
50	clear	---	none
51	clear	clear	red
52	clear	clear	amber
53	clear	clear	green
54	clear	clear	blue
55	clear	clear	clear

### 4. LAMP VOLTAGE 4

incandescent			
006	6 volt	012	12 volt
018	18 volt	024	24 volt
neon			
125N	125 volt neon	250N	250 volt neon

# Dimensional Specs

inches [millimeters]



MOUNTING HOLE  
Keyway should point down  
for maximum water resistance

## Authorized Sales Representatives and Distributors

Click on a region of the map below to find your local representatives and distributors or visit [www.carlingtech.com/findarep](http://www.carlingtech.com/findarep).



## About Carling

Founded in 1920, Carling Technologies is a leading manufacturer of electrical and electronic switches and assemblies, circuit breakers, electronic controls, power distribution units, and multiplexed power distribution systems. With six ISO9001 and IATF16949 registered manufacturing facilities and technical sales offices worldwide, Carling Technologies Sales, Service and Engineering teams do much more than manufacture electrical components, they engineer powerful solutions! To learn more about Carling please visit [www.carlingtech.com/company-profile](http://www.carlingtech.com/company-profile).

To view all of Carling's environmental, quality, health & safety certifications please visit [www.carlingtech.com/environmental-certifications](http://www.carlingtech.com/environmental-certifications).

© Carling Technologies, Inc.

3. Carling is a registered trademark of Carling Technologies, Inc. in the U.S. and other countries.

## X-ON Electronics

Largest Supplier of Electrical and Electronic Components

*Click to view similar products for [Toggle Switches](#) category:*

*Click to view products by [Carling](#) manufacturer:*

Other Similar products are found below :

[8928K478](#) [8951K2998](#) [8951K3310](#) [8956K1283](#) [8956K1285](#) [8956K1286](#) [8956K1287](#) [8961K155](#) [8A1-C-222](#) [020017-13](#) [0090-0001](#) [0121-0015](#) [CS115W](#) [CS120W](#) [CS1223GY](#) [CS215I](#) [CS8275](#) [637H/25](#) [7101SPDV30BE](#) [7103SDV30BE](#) [7105D](#) [7108P3YAV2BE](#) [71YY50282](#) [7209SY9AQE](#) [7209SYCBE](#) [7300K36](#) [7301SS24484](#) [7303KZQE](#) [7306K36](#) [7503K21](#) [7565K6](#) [7595K6](#) [7660K12](#) [7691K14](#) [7704K3](#) [8391K108](#) [8811K17](#) [8825K5](#) [8835K3](#) [8858K44](#) [8E4011](#) [1202W](#) [A201SCWZB04](#) [A208J61ZQ0004](#) [A221T1TCQ](#) [A232S1YZQ](#) [A432S1YZQ](#) [1201W](#) [1203W](#) [12149A-3V](#)