

SPANNFIX - BASES

The variable Spannfix bases enable accurate and secure positioning in all directions, e.g. sensors, measuring devices, monitors and cameras. The ESD versions have a dissipating black surface with a resistance between 10^7 and $10^8 \Omega$.

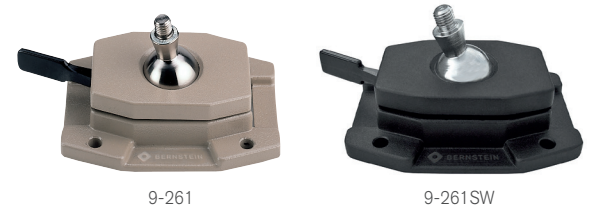
SPANNFIX base with ball joint and threaded stud M 12 x 1.5, for screwing

- 9-251 Colour: umbra | Surface: structured | Weight: 940 g
- 9-251 ESD Colour: ESD black | Surface: smooth, silky | Weight: 940 g
- 9-251 SW Colour: black | Surface: fine, matt | Weight: 940 g

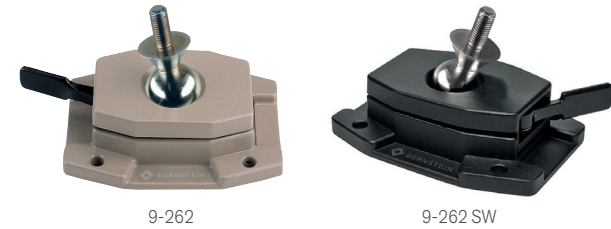


SPANNFIX base with ball joint and threaded pin, for fixed screwing on

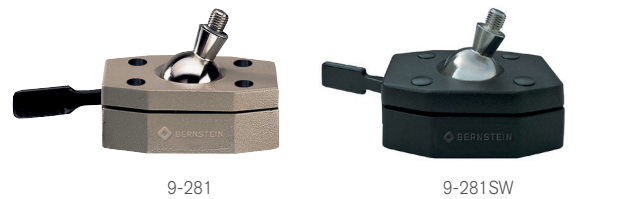
- 9-261 Colour: umbra | Surface: structured | Weight: 830 g
- 9-261 SW Colour: ESD black | Surface: smooth, silky | Weight: 830 g
- Size of the base plate: 150 x 105 mm
- Thread: M 12 x 1.5
- Through holes: \varnothing 9 mm



- 9-262 Colour: umbra | Surface: structured | Weight: 910 g
- 9-262 SW Colour: ESD black | Surface: smooth, silky | Weight: 910 g
- Size of the base plate: 150 x 105 mm
- Thread: M 12 x 1.5
- Thread length extra long: 25 mm
- Support plate: \varnothing 40 mm
- Through holes: \varnothing 9 mm



- 9-281 Colour: umbra | Surface: structured | Weight: 660 g
- 9-281 SW Colour: ESD black | Surface: smooth, silky | Weight: 660 g
- Size of the base plate: 110 x 72 mm
- Size of the holes: \varnothing 6 mm
- Thread: M 12 x 1.5



NEW

SPANNFIX-base with ball joint and threaded stud, with magnetic feet

- 9-284 SW Colour: ESD black | Surface: smooth, silky | Weight: 730 g
- Size of the base plate: 110 x 72 mm
- Size of the magnets: \varnothing 20 mm
- Threaded stud with self-locking nut: M 12 x 1.5
- Thread length: 25 mm
- Holding force with plastic caps (without caps): 15 Kg (32 Kg)
- Shear force with plastic caps (without caps): 7 Kg (15 Kg)



X-ON Electronics

Largest Supplier of Electrical and Electronic Components

Click to view similar products for [Hand Tools](#) category:

Click to view products by [Bernstein](#) manufacturer:

Other Similar products are found below :

[568681-1](#) [576786-2](#) [58061-1](#) [58176-1](#) [58177-1](#) [58177-2](#) [58284-1](#) [59085](#) [0031](#) [59737-5](#) [015-0339-000](#) [015-8755-001](#) [600-146-06](#) [M15570-25](#) [62200-5709](#) [6-304052-1](#) [63443-1002](#) [63443-3513](#) [63443-4025](#) [63443-7114](#) [6-354778-5](#) [6-354779-2](#) [63600-2995](#) [63810-0105](#) [M8196914-08](#) [662508-1](#) [662908-1](#) [679994-1](#) [679994-2](#) [68764-0001](#) [69001-0105](#) [69002-5525](#) [690124-7](#) [690191-1](#) [690191-4](#) [690518-2](#) [690696-1](#) [691409-4](#) [691667-1](#) [692006-2](#) [692655-7](#) [692776-1](#) [692776-4](#) [693077-3](#) [693077-4](#) [693597-1](#) [D20418-137](#) [D20419-189](#) [ET-LY10](#) [734041-1](#)