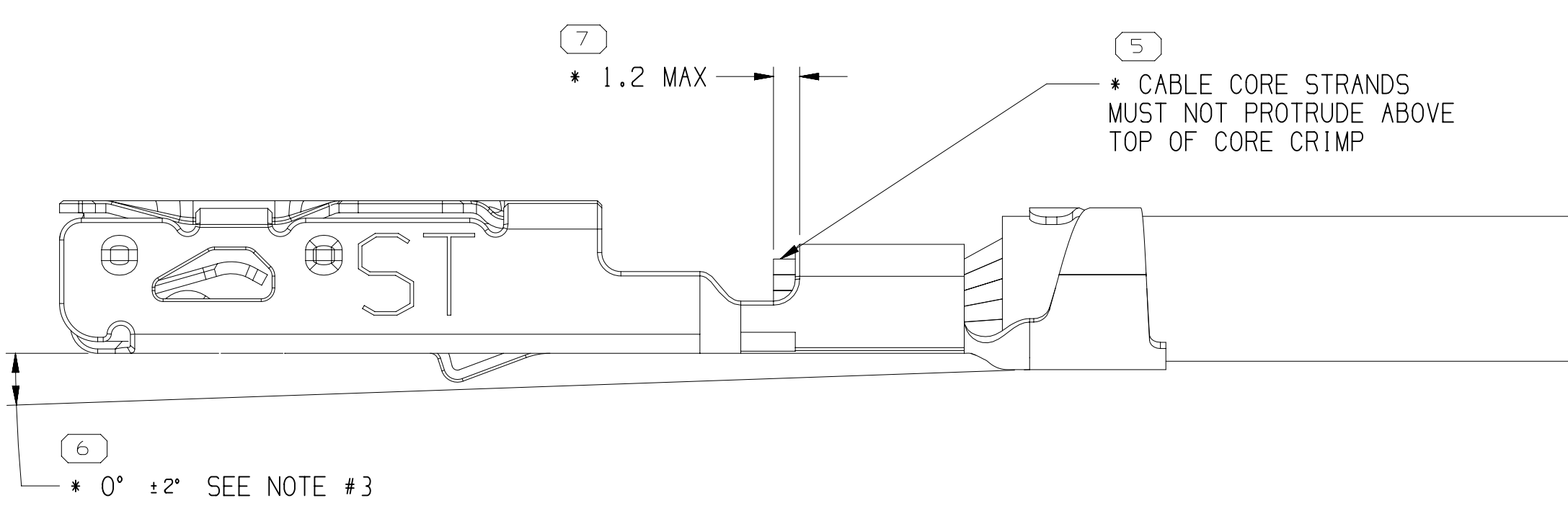
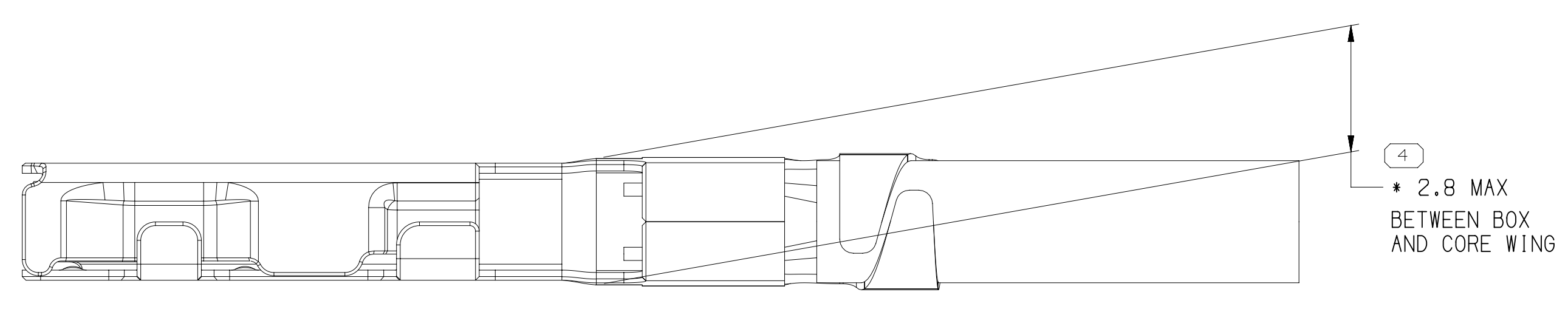
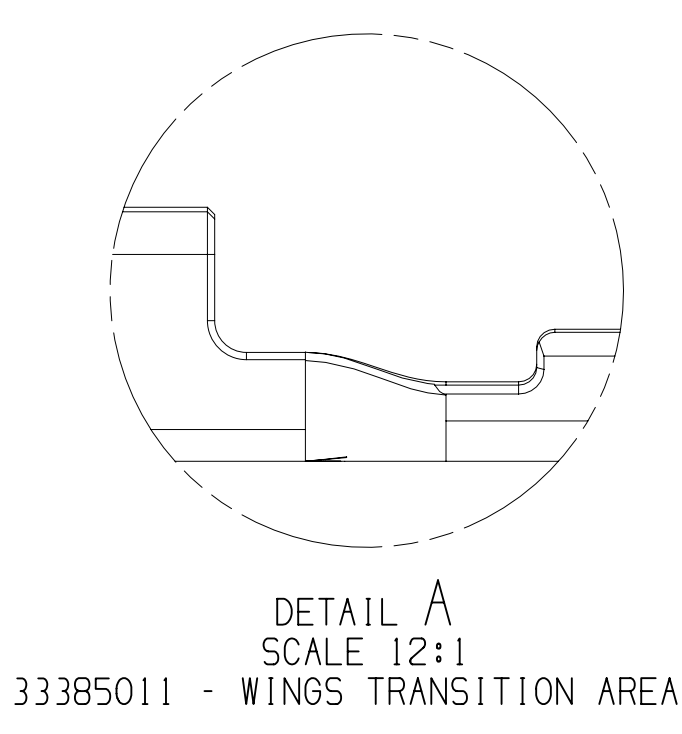
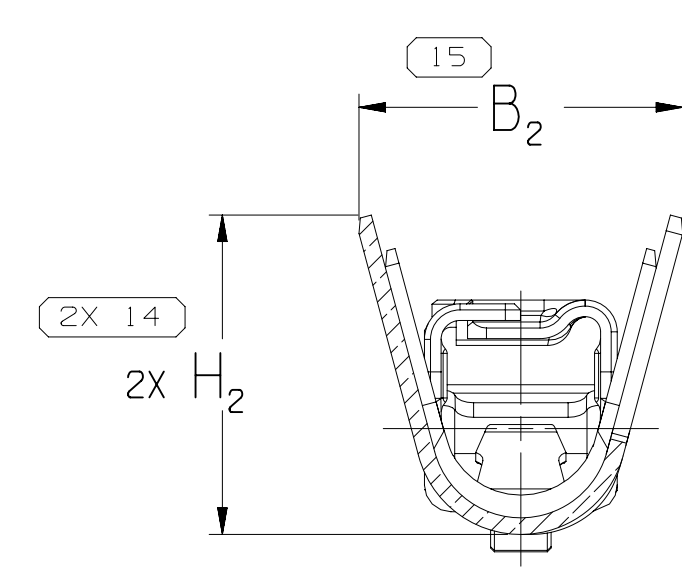
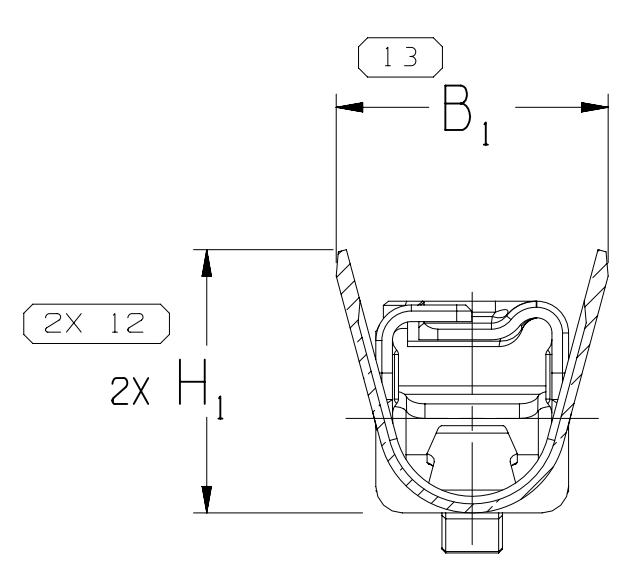
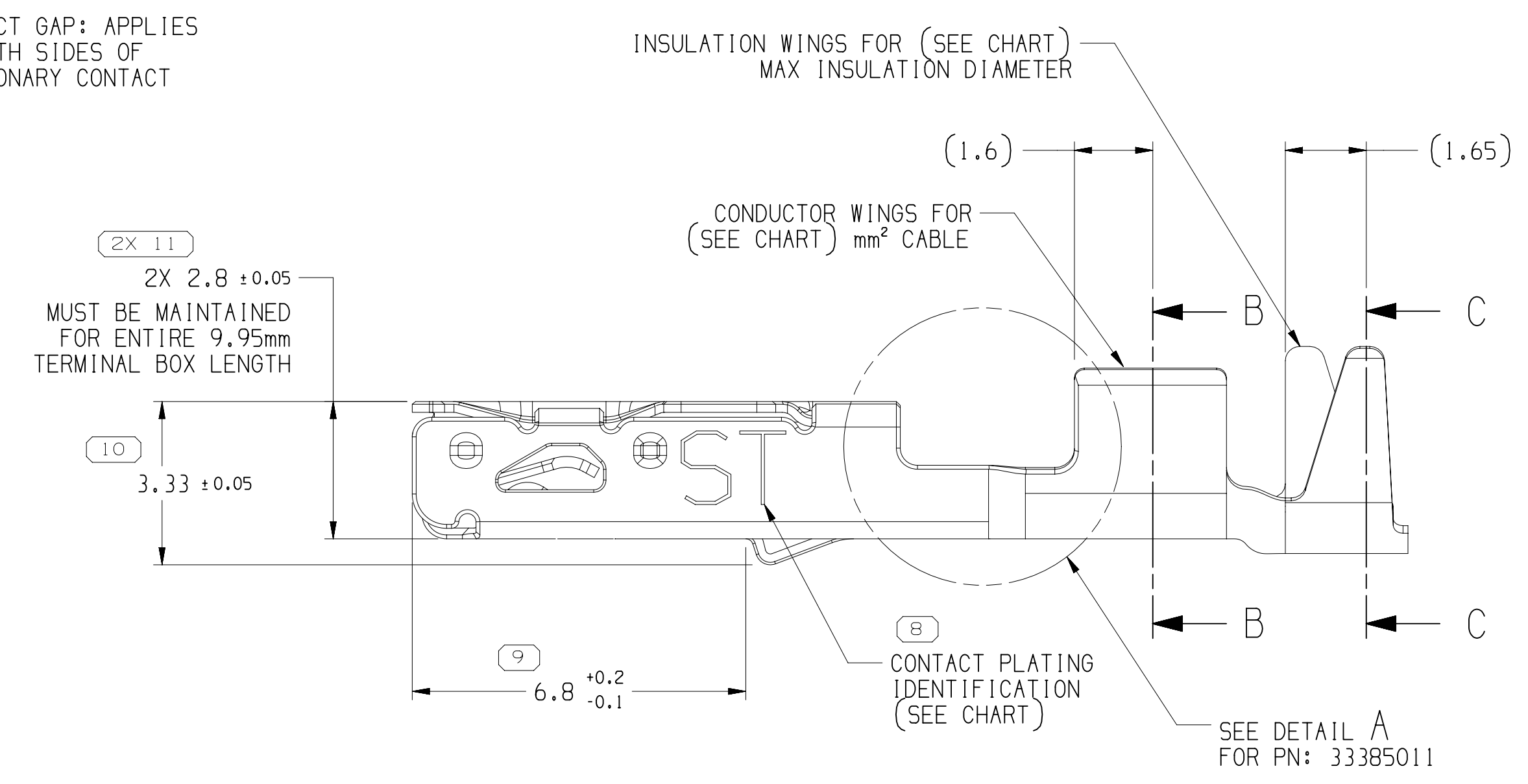
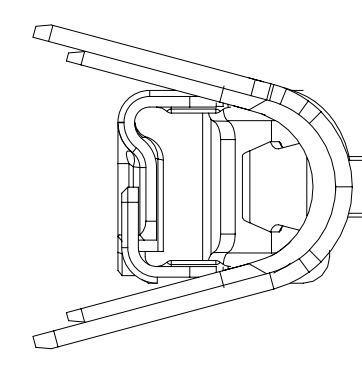
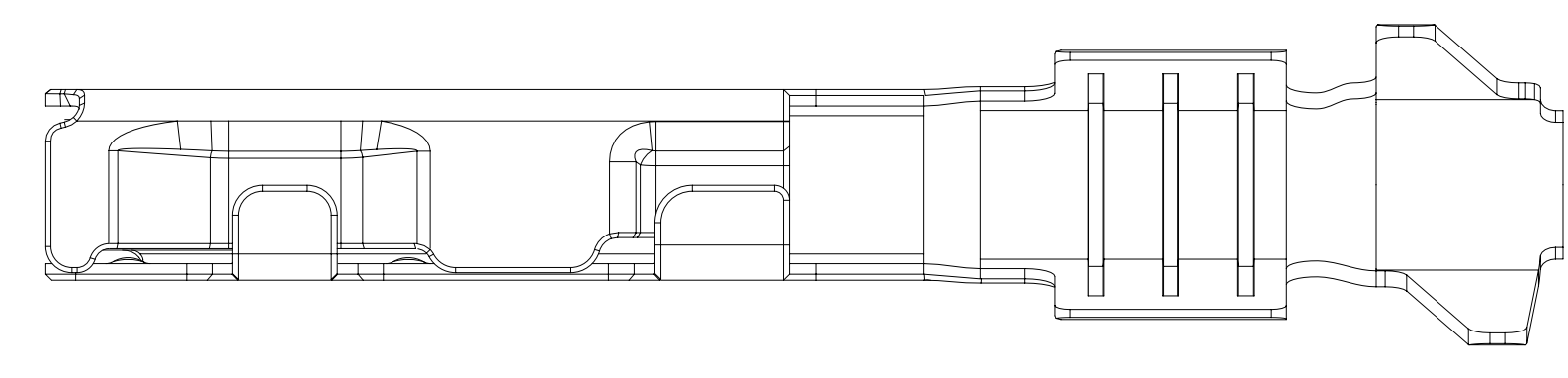
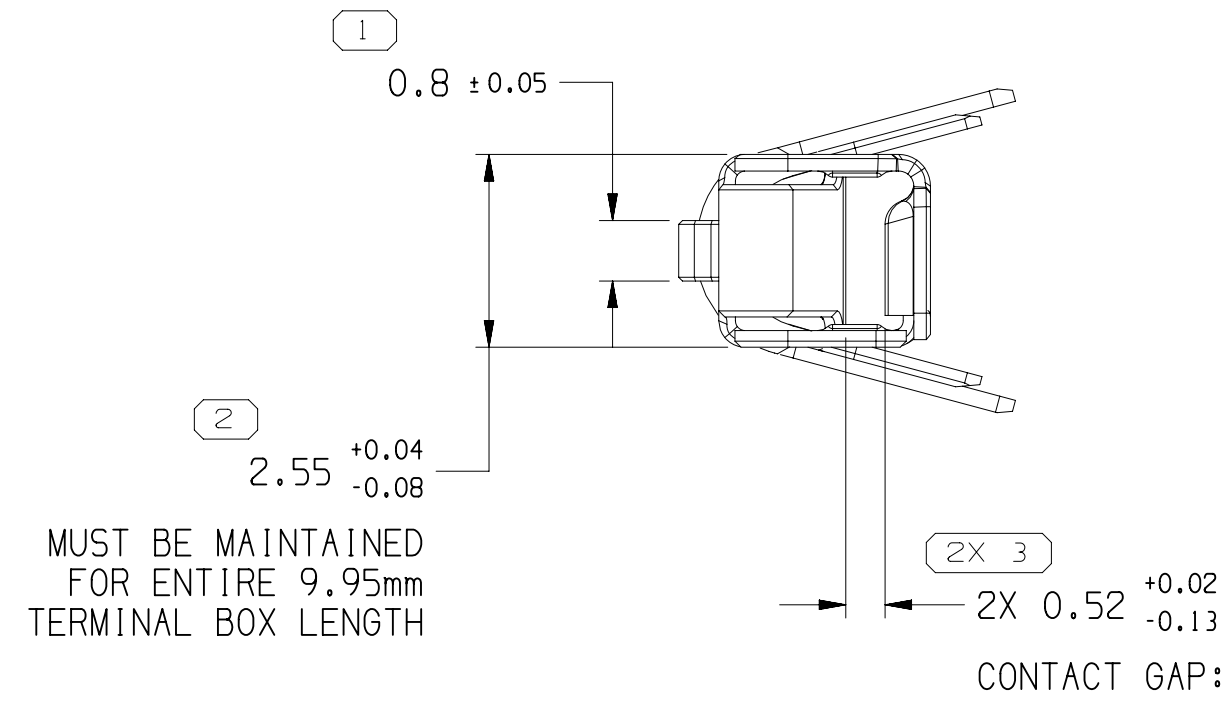
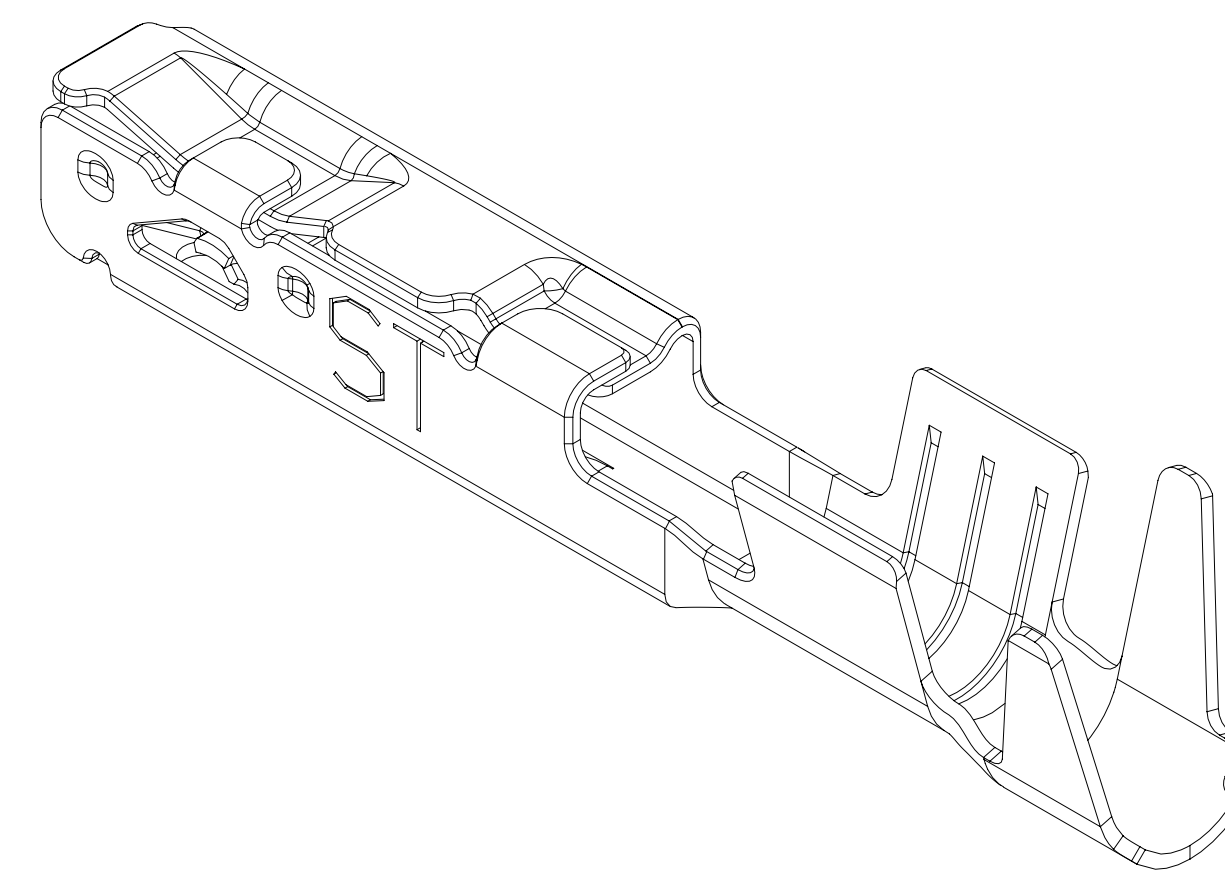
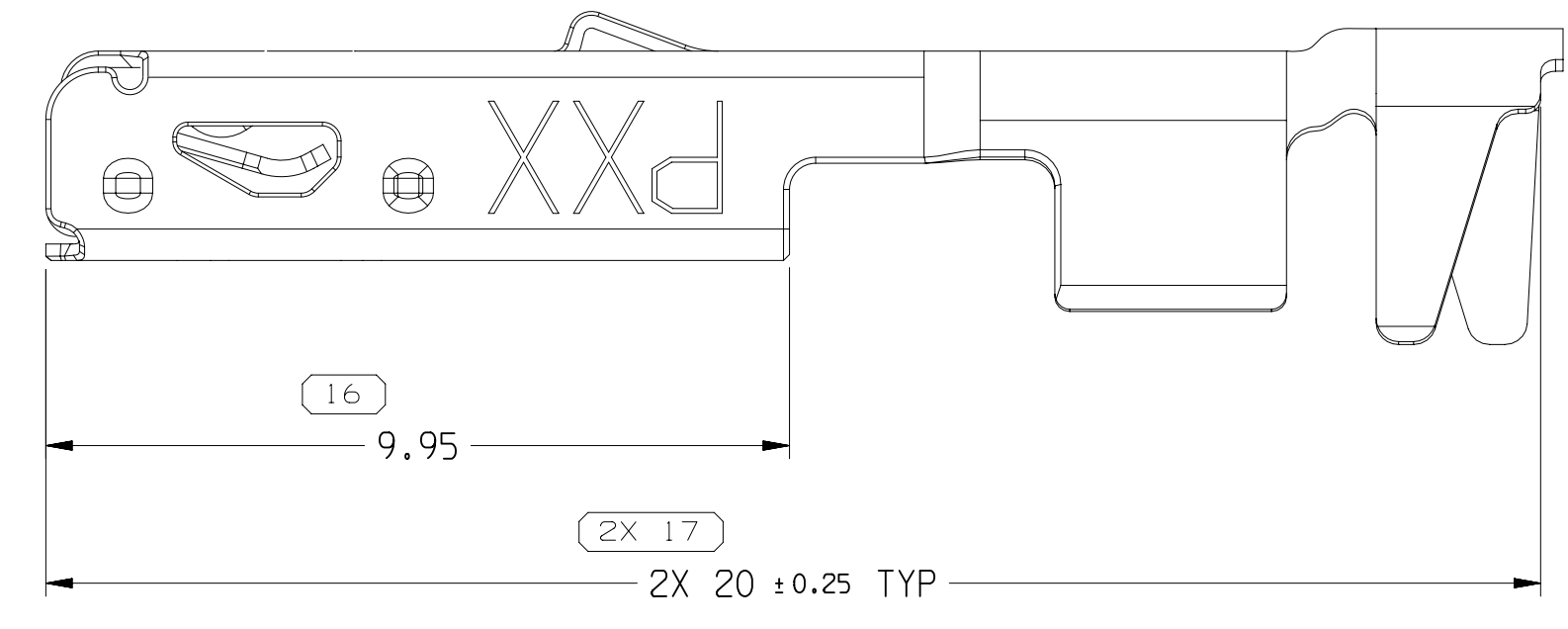


SYMBOL DEFINITION		TOTAL NO OF INSPECTIONS REQUIRED	NO MISSING SYMBOL NUMBER
A DIMENSION WITHOUT AN INSPECTION REPORT SYMBOL DOES NOT REQUIRE INSPECTION. IT MAY BE CONTROLLED ON THE INDIVIDUAL COMPONENT DRAWING.		22	
LAST NO. USED		17	

DWG STATUS	DATE	STG	REV	N/P	CHG	ZONE	REVISION HISTORY	AUTH	DR	APVD	APVD
	22SE20	R	01	-	-		ALL PARTS - RELEASED PART DRAWING	552386	ORA	RBS	RBS
	06N020	R	02	-	-		35493301-03 - UPDATED PART AVAILABILITY	552919	JGO	AGC	RBS
	11AP22	R	03	-	-		35493304 - OBSOLETE & ADDED REPLACED BY COLUMN; 33385011 - WAS ON SHT 4 AND ADDED DETAIL A	557078	AHY	JAA	DD
	28AP22	R	04	-	-		35302412 - 15 - RELEASED AND ADDED GREASED INFO IN CHART	557240	MLR	JAA	DD
	30MY22	R	05	-	-		ALL PARTS - ADDED 35501958-9 TO BOD CHART; 35493303 - REVISED CABLE SIZE & DIAMETER	557468	W.J.L.	W.J.L.	DD
	24FE23	R	06	-	-		35302412-15 & 35501958 - UPDATED PDM ATTRIBUTES	559682	GLG	GLG	DD



TERMINAL, CABLE ALIGNMENT & POSITION

- NOTES
- UNLESS OTHERWISE SPECIFIED AND/OR INDICATED: DIMENSIONS ARE TO FACE OF VIEW SHOWN AND AUTOMATICALLY ROUNDED BY COMPUTER FOR INSPECTION (SEE MATH MODEL FOR PRECISE DIMENSIONS). FOR ALL OTHER DIMENSIONS NOT SHOWN BUT REQUIRED FOR TOOL BUILD, SEE MATH MODEL FOR PRECISE TOOL PATH DATA.
  - RECOMMENDED MATING BLADE THICKNESS 0.8 +0.04/-0.03mm. RECOMMENDED MATING BLADE WIDTH NOT TO EXCEED 1.6mm AND NO LESS THAN 1.1mm. SEE USCAR EWCAP-001 (1.5' BLADE) FOR MATING BLADE REQUIREMENTS.
  - PLUS ANGLE IS WING BOTTOM SURFACE ROTATED COUNTERCLOCKWISE AGAINST THE BOX BOTTOM SURFACE.
  - MAXIMUM CURRENT CAPACITY AS DEFINED BY USCAR-2 R5 SECTION 5.3.3 IS 22 AMPS WITH 2.0mm² COPPER CABLE.
  - \* DENOTES DIMENSIONS MADE AT CUT-OFF AND CRIMP DIE
  - THIS TERMINAL CAN BE USED WITH USCAR CAVITY STANDARD EWCAP-002
  - MAXIMUM INSULATION CRIMP WIDTH OF 2.9mm AND HEIGHT OF 3.4mm FOR CABLE SIZE UP TO 2.6mm O.D.; MAXIMUM CORE CRIMP WIDTH IS 2.9mm.
  - PLATING TYPE: III, SLIPPERY TIN 0.6 - 1.2 μm THICK OVER NICKEL UNDERPLATE 0.4 μm MIN THICK. PLATING TYPE INFORMATION SHOWN ABOVE IS REFERENCE ONLY. PLATING REQUIREMENTS ARE CONTAINED IN APPLICABLE MATERIAL SPECIFICATION.
  - PARTS MEET THE PERFORMANCE REQUIREMENTS OF GMM3191 DEC 2007 AND SAE/USCAR-2 R5 REVISIONS FOR THE FOLLOWING CLASSIFICATIONS: TEMPERATURE CLASS 3 (-40° C TO +125° C) VIBRATION CLASS 1 (ON BODY OR CHASSIS) SEALING CLASS 1 (UNSEALED) FOR GAGE I.D. 25 & 14 SEALING CLASS 2 & 3 (SEALED-CONNECTOR DEPENDENT) FOR GAGE I.D. 21 & 17
  - DO NOT PROBE, TEST OR OTHERWISE CONTACT THE INTERIOR REGION (THE SPRING OR ANY MOVING PART) OF THIS TERMINAL. SEVERE DAMAGE CAN OCCUR, COMPROMISING THE PERFORMANCE OF THE ELECTRICAL INTERFACE.

PART NO	REV	N/P	MATERIAL DESCRIPTION	CONTACT AREA PLATING TYPE (SEE NOTE #8)	CRIMP AREA PLATING TYPE (SEE NOTE #8)	CONTACT PLATING I.D.	MATERIAL THICKNESS	PART NO	REV	N/P	MATERIAL DESCRIPTION	GREASE MAT'L DESCRIPTION	I.D.	CABLE SIZE (mm²)	CABLE DIAMETER	B <sub>1</sub> ±0.15	B <sub>2</sub> ±0.25	(H <sub>1</sub> )	(H <sub>2</sub> )	REPLACED BY
33385011	01	AC	COPPER ALLOY	III	III	ST	0.22	35382415	01	AA	33385011	NYE 7686	25	0.13 - 0.22	0.81 - 1.2	1.5	1.9	1.5	1.7	-
35493301	01	AA	COPPER ALLOY	III	III	ST	0.22	35382412	01	AA	35493301	NYE 7686	14	1.5 - 2	2.0 - 2.8	3.6	4.3	3.5	4.2	-
35493302	01	AA	COPPER ALLOY	III	III	ST	0.22	35382413	01	AA	35493302	NYE 7686	17	0.75 - 1	1.7 - 2.34	2.5	3.6	2.6	3.6	-
35493303	01	AA	COPPER ALLOY	III	III	ST	0.22	35382414	01	AA	35493303	NYE 7686	21	0.5	1.4 - 1.9	2.1	3	2.1	3	-
35501959	01	-	COPPER ALLOY	III	III	ST	0.22	35501959	01	AA	35501959	NYE 7686	22	0.35	1.2 - 1.7	1.95	3	1.8	3	-
35493304	01	AA	COPPER ALLOY	III	III	ST	0.22	-	-	-	-	-	25	0.13 - 0.22	0.81 - 1.2	1.5	1.9	1.5	1.7	33385011

2	PROCESS SENSITIVE DIMENSION
1	DIMENSIONS ENCLOSED IN ( ) INDICATE REFERENCE DIMENSIONS AND NO TOLERANCE LIMITS ARE ESTABLISHED
1	CHART D
1	FROM 0 TO > 12
1	TOLERANCE UNLESS OTHERWISE SPECIFIED
1	±0.1 ±0.2 ±0.3
1	ANGULAR TOLERANCE ±2°

THIRD ANGLE PROJECTION	DO NOT SCALE	USE MATH DATA
------------------------	--------------	---------------

**APTIV**  
CONNECTION SYSTEMS  
WARREN, OH  
COPYRIGHT 2023 APTIV. ALL RIGHTS RESERVED.  
THIS DRAWING IS THE PROPERTY OF APTIV AND CONTAINS APTIV CONFIDENTIAL INFORMATION. THE REPRODUCTION, DISTRIBUTION AND UTILIZATION OF THIS DOCUMENT OR ITS RELATED CAD DATA, AS WELL AS COMMUNICATION OF ANY CONTENT TO OTHERS, WITHOUT EXPRESS AUTHORIZATION, IS PROHIBITED.

DRAWING NUMBER: TAXI TERM F OCS 1.5  
DRAWING NUMBER: 13849927  
SIZE: A0  
SCALE: 10:1  
FRAME NO: 1 OF 1  
SHEET NO: 6 OF 6  
STG: R  
REV: 06

## X-ON Electronics

Largest Supplier of Electrical and Electronic Components

*Click to view similar products for [Terminals category](#):*

*Click to view products by [APTIV manufacturer](#):*

Other Similar products are found below :

[00-054007-01074-6](#) [00-054007-70206-1](#) [00-054007-70210-8](#) [00-054007-70217-7](#) [00-054007-70228-3](#) [00-054007-70256-6](#) [00-054007-70316-7](#) [00-054007-49560-4](#) [00-054007-70209-2](#) [00-054007-70231-3](#) [00-054007-70241-2](#) [00-054007-70242-9](#) [00-054007-70246-7](#) [00-054007-70263-4](#) [00-054007-70288-7](#) [00-054007-70290-0](#) [00-054007-70300-6](#) [00-054007-70304-4](#) [01-2900-1-04412](#) [0190160084](#) [0190350008](#) [600TS-10](#) [605601-1](#) [60617-1-C](#) [61314-6-C](#) [626-0194](#) [63-S](#) [M55155/079C01](#) [M55155/099B03](#) [M55155/109H01](#) [M55155/12XH05](#) [M55155/29XJ08](#) [M55155/30-6S](#) [M55155/30-9S](#) [M55155/30XI09](#) [M6-14RSX](#) [M86700006](#) [D18-110B-C](#) [D18-110B-M](#) [701-1936](#) [701-1955](#) [701-2003](#) [701-2007](#) [701-2013](#) [701-2018](#) [701-2069](#) [701-2077-60](#) [701-2315](#) [701-2430](#) [701-2480](#)