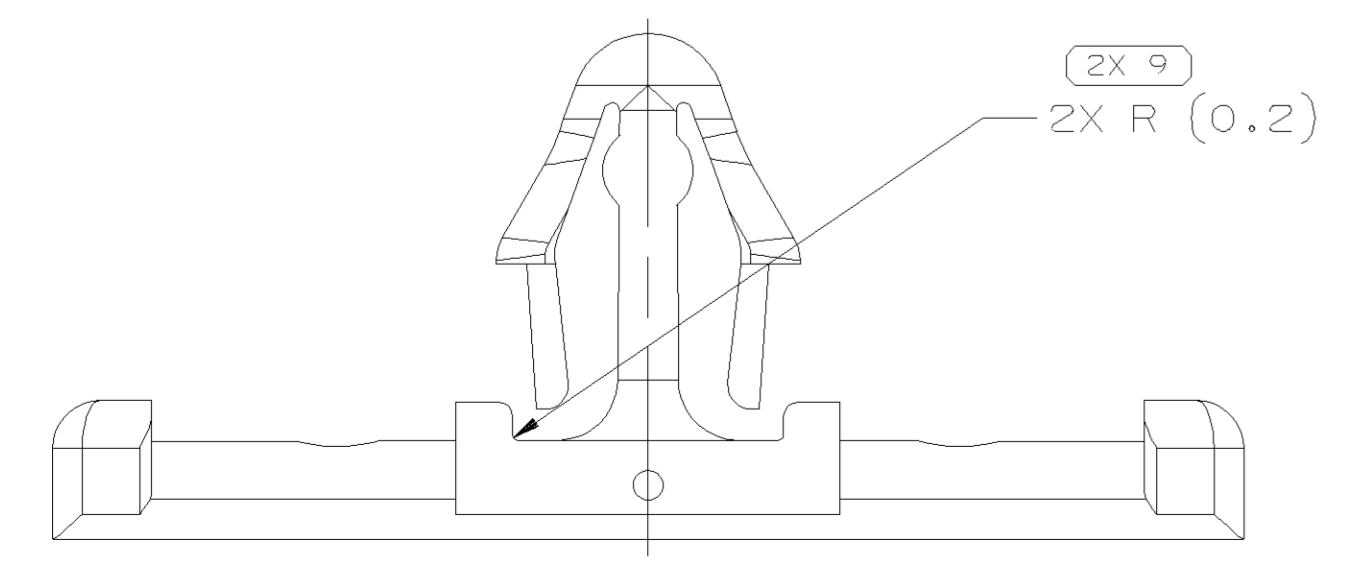
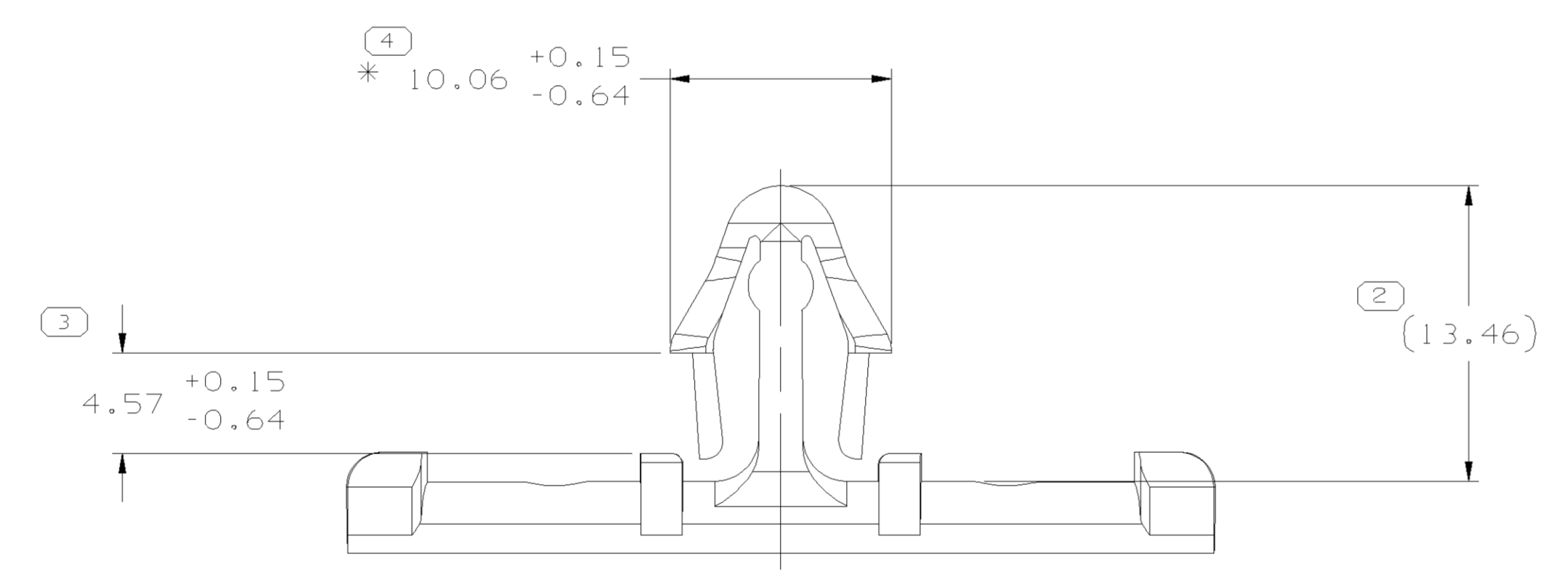
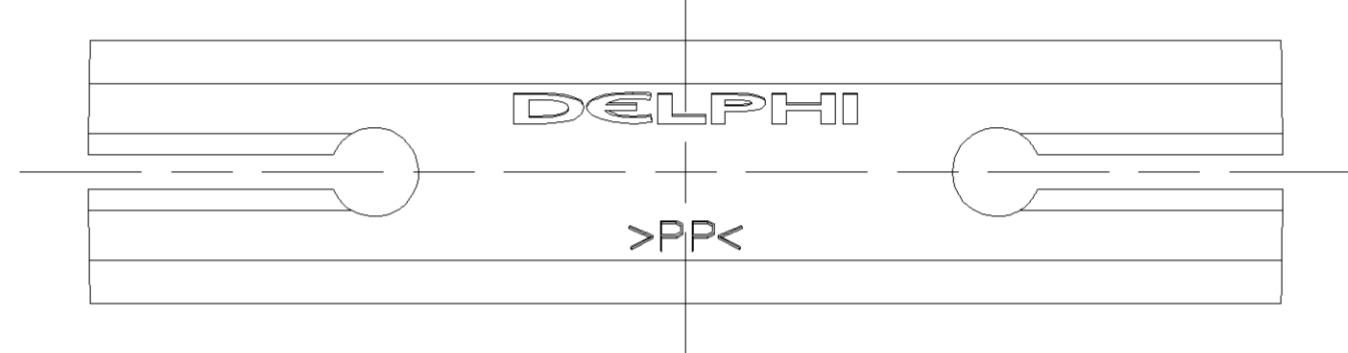
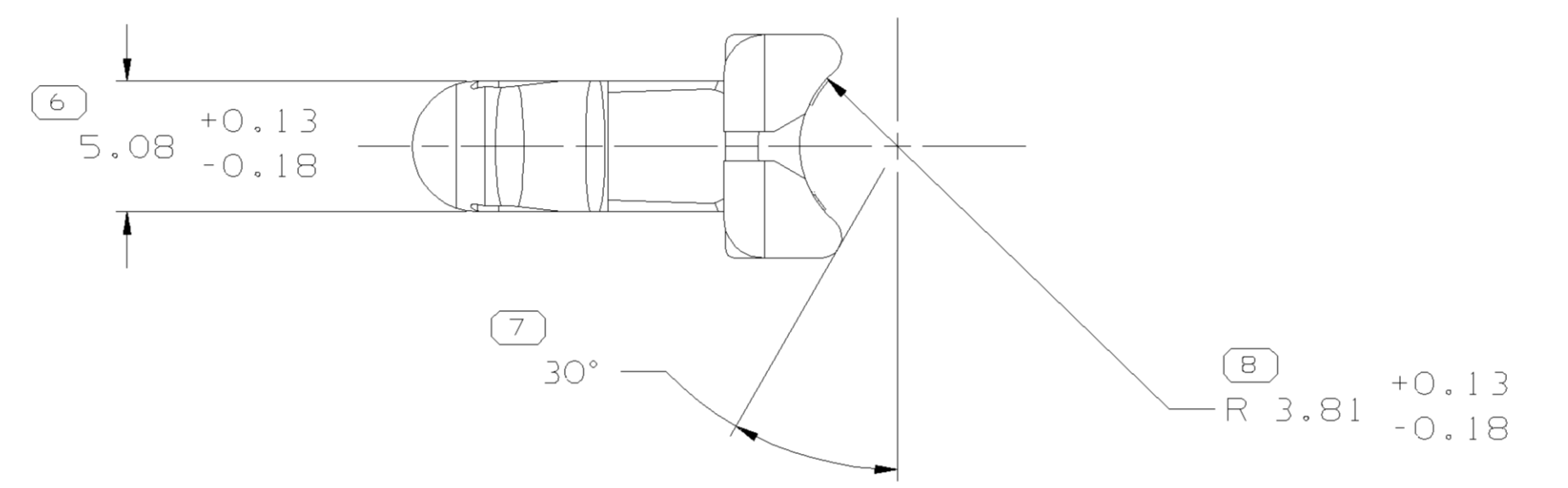
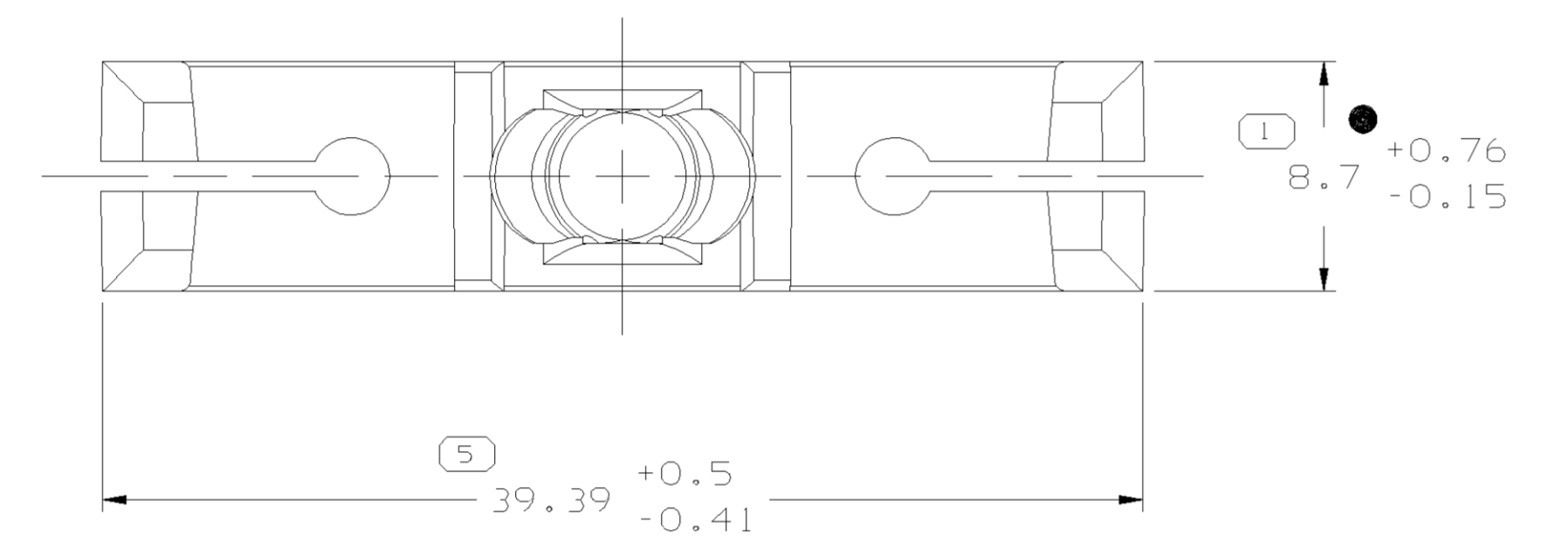
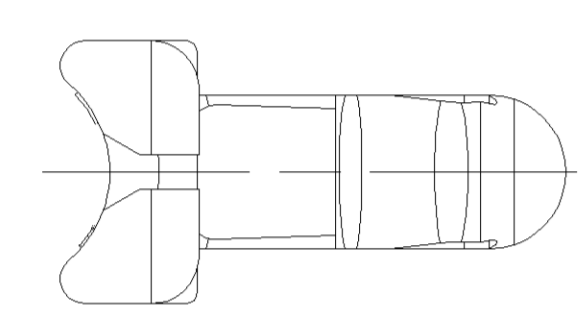
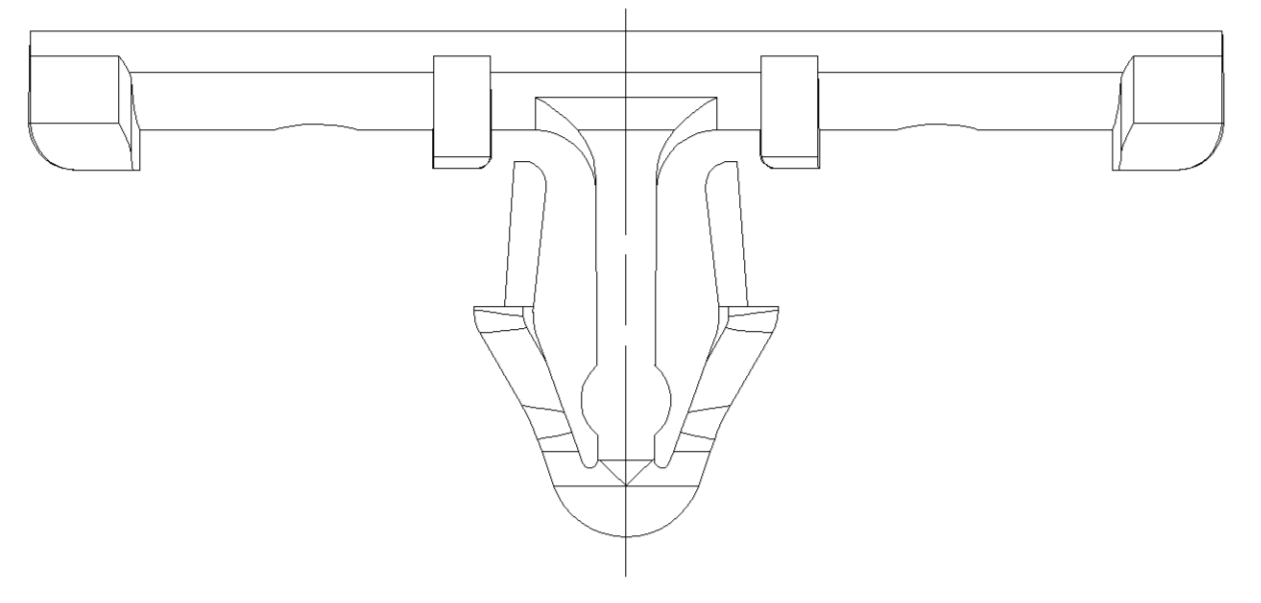


| SYMBOL DEFINITION  |                                  | MISSING SYMBOLS          |  |
|--|----------------------------------|--------------------------|--|
| A DIMENSION WITHOUT AN INSPECTION REPORT SYMBOL DOES NOT REQUIRE INSPECTION. IT MAY BE CONTROLLED ON THE INDIVIDUAL COMPONENT DRAWING. | TOTAL NO OF INSPECTIONS REQUIRED | NO MISSING SYMBOL NUMBER |  |
|  | 10                               |                          |  |
|  | LAST NO. USED                    |                          |  |
|  | 9                                |                          |  |

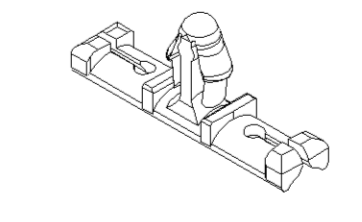
| DWG STATUS |     |     |     | REVISION HISTORY |      |   |        | AUTH |     |    |
|------------|-----|-----|-----|------------------|------|---|--------|------|-----|----|
| DATE       | STG | REV | N/P | CHG              | ZONE |   |        |      |     |    |
| 20.JUN02   | R   | 01  | -   | -                |      | REDRAWN TO PD: ALL PARTS - ADDED NOTES (3 PLCSI, ADDED DIM B.7, REVISED DIMS (2 PLCSI) AND REVISED MAT'L SPEC | 225950 | JTD  | EGR | ET |
| 04SE02     | R   | 02  | -   | -                |      | ALL PARTS - ADDED OPTIONAL CONSTRUCTION AND DIMENSION   | 230189 | LEG  | LEG | ET |
| 31.JAN03   | R   | 03  | -   | -                |      | ALL PARTS - REVISED MAT'L SPEC  | 236288 | ARA  | ARA | ET |
| 07.MAR03   | R   | 04  | -   | -                |      | ALL PARTS - B.7 +0.76/-0.15 WAS B.7 & REVISED NOTE #3.  | 237950 | EOV  | EOV | FR |
| 20.JUN03   | R   | 05  | -   | -                |      | ALL PARTS - REVISED GRAPHICS  | 242318 | ARA  | GEG | FR |



OPTIONAL CONSTRUCTION

NOTES

- UNLESS OTHERWISE SPECIFIED AND/OR INDICATED: DIMENSIONS ARE TO FACE OF VIEW SHOWN AND AUTOMATICALLY ROUNDED BY COMPUTER FOR INSPECTION (SEE MATH MODEL FOR PRECISE DIMENSIONS). FOR ALL OTHER DIMENSIONS NOT SHOWN BUT REQUIRED FOR TOOL BUILD, SEE MATH MODEL FOR PRECISE TOOL PATH DATA.
- RECOMMENDED HOLE SIZE 6.1 - 6.6 DIA. HOLE IN 3.81 MAX THICK STOCK.
- DIMENSIONS MARKED WITH \* MAY VARY -0.64 AND WITH ● +0.76 DUE TO BOW.
- MATERIAL RECYCLING CODE >PP< PER SAE J1344. (1.5)X(0.1) RAISED CHARACTERS AS SHOWN TO BE LOCATED ON ANY EXTERIOR SURFACE. OPTIONAL CONSTRUCTION TO BE NO MATERIAL RECYCLING CODE.
- (1.5)X(0.1) RAISED DELPHI CORPORATE BRAND TO BE LOCATED ON ANY EXTERIOR SURFACE, PREFERABLY VISIBLE AT FINAL ASSEMBLY. OPTIONAL CONSTRUCTION TO BE "PED" OR NO LOGO.



| DWG TYPE  |       | PART DRAWING |   |
|---|-------|--------------|---|
| STYLE   |       | DISTR CODE   | D |
| VOLUME (CPI)  | 0,941 |              |   |
| ROUTING   | 6900  |              |   |
| UNLESS OTHERWISE SPECIFIED  |       |              |   |
| THIS DOCUMENT IS IN ACCORDANCE WITH ASME Y14.5M-1994 AS AMENDED BY THE 04 GLOBAL DIMENSIONS AND TOLERANCING ADDENDUM - 1997. ALL GEOMETRIC TOLERANCES AND RELATED DATUMS APPLY. RULE #1 PRECEDES FORM #1. MATH DOES NOT APPLY WHEN RELATIONSHIP BETWEEN FEATURES IS ESTABLISHED BY ORIENTATION OR LOCATION TOLERANCES. SEPARATE POSITION DATUMS MAY BE SHOWN SEPARATELY. ALL DIMENSIONS ARE IN MILLIMETERS. |       |              |   |
| REFERENCE   |       |              |   |

**DELPHI**  
DELPHI PACKARD ELECTRIC SYSTEMS  
WARREN, OH

| DR               | DATE   |
|------------------|--------|
| APV01 G. BINGHAM | 29SE97 |
| APV02 M. CHESTAY | 130C97 |
| APV03 E. TRACEY  | 130C97 |
| APV04            |        |
| APV05            |        |

MATERIAL SUBSTANCES OF CONCERN AND RECYCLED CONTENT PER DELPHI 10949001

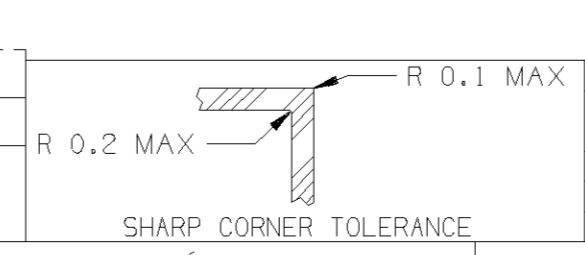
SEE CHART

DRAWING NAME  
TAXI MOUN CLIP 6.35 HARNESS

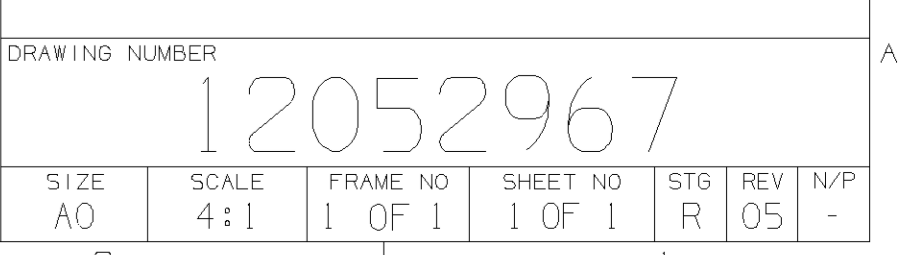
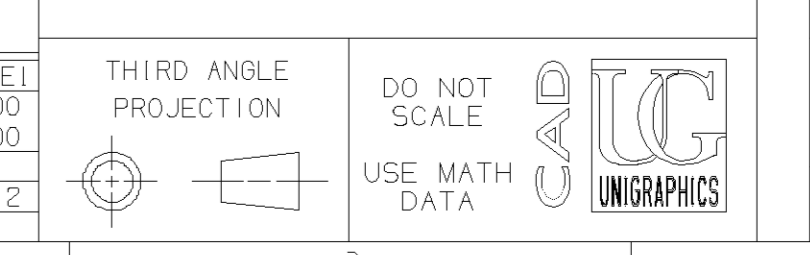
DRAWING NUMBER  
12052967

| SIZE | SCALE | FRAME NO | SHEET NO | STG | REV | N/P |
|------|-------|----------|----------|-----|-----|-----|
| A0   | 4:1   | 1        | 1        | 1   | 1   | 05  |

| PART NO  | REV | N/P | STATUS | MATERIAL SPECIFICATION AND COLOR |
|----------|-----|-----|--------|----------------------------------|
| 12052743 | 02  | AB  |        | M2097001 - PP 1M BLK             |
| 08911065 | 04  | AB  |        | M2097002 - PP 1M NAT             |



| FROM  | TO    | TOLERANCE |
|-------|-------|-----------|
| > 0   | > 20  | ±0.15     |
| > 20  | > 30  | ±0.2      |
| > 30  | > 70  | ±0.3      |
| > 70  | > 100 | ±0.4      |
| > 100 | > 150 | ±0.5      |
| > 150 | > 200 | ±0.6      |
| > 200 | > 250 | ±0.8      |
| > 250 | > 300 | ±1        |
| > 300 | > 400 | ±1.2      |



## X-ON Electronics

Largest Supplier of Electrical and Electronic Components

*Click to view similar products for [Automotive Connectors](#) category:*

*Click to view products by [APTIV](#) manufacturer:*

Other Similar products are found below :

[72.330.1035.1](#) [776880-1](#) [827153-1](#) [9-1326729-8](#) [9-221607-5](#) [925474-1](#) [964562-4](#) [968782-1](#) [12004468](#) [12004475-L](#) [12004483](#) [12033816](#)  
[12052466](#) [12066163](#) [12015909](#) [12077753](#) [1-21030-1](#) [12047958](#) [12084688](#) [13669373](#) [13688972](#) [13755420](#) [13779834](#) [13796274](#) [13843152](#)  
[13581967](#) [13667961](#) [13669624](#) [13753471](#) [13946876](#) [13955963](#) [13971791](#) [13790534-L](#) [13797473](#) [13805590](#) [13888202](#) [1428188-1](#)  
[1437287-3](#) [1428188-2](#) [DS07-19S-5020](#) [1456987-7](#) [APD-7CP-H](#) [APK-SB25A10L](#) [1452931-2](#) [15326397](#) [15336198](#) [15435215](#) [15305306](#)  
[15345479](#) [15396680](#)