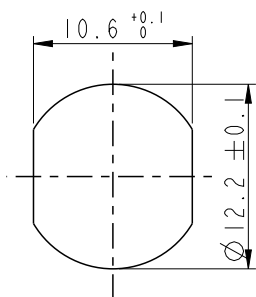
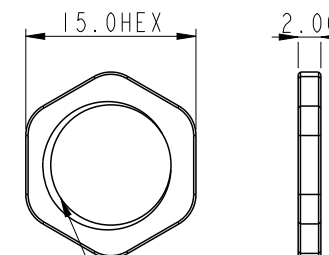
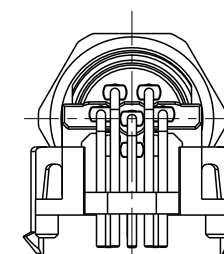
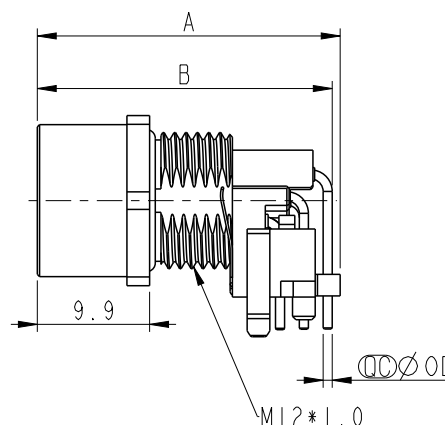
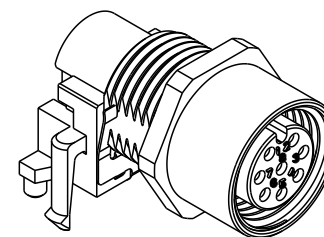
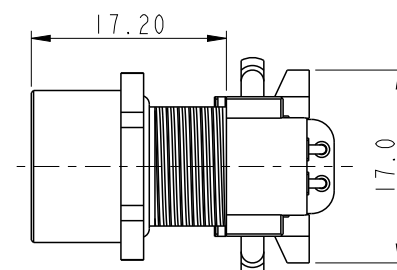
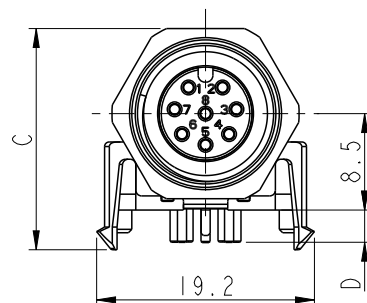


REV.	ECN NO.	DATE	SIGN	DESCRIPTION
A		2022/03/07	Leon	New Initial




Recommended
Panel Cut-Out



M12*1.0


Note:

- * RoHS Compliant
- *  Important dimension
- * Waterproof rate: IPX7, mated
- * Connector
 - Housing: Thermoplastic, Black
 - Pin: Copper alloy, Gold plated
 - Gasket: Rubber, Black
 - Shield: Metal
 - Nut: Metal
 - O-Ring: Rubber, Gray
- * For panel thickness max: 3.0mm
- * For pcb thickness max: 1.6mm
- * Nut is packed separately in pe bag

MSAS-XXPFFR-SH7003

XX: No. Of Pin

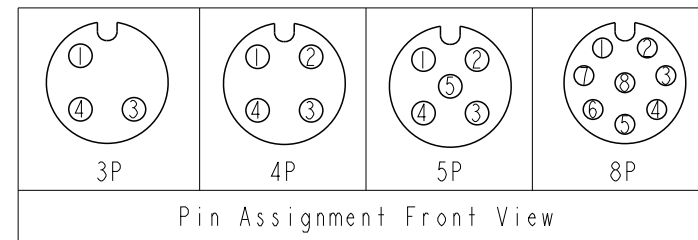
MSAS-03PFFR-SH7003	26.9	25.8	19.2	2.52	1.0
MSAS-04PFFR-SH7003	26.9	25.8	19.2	2.52	1.0
MSAS-05PFFR-SH7003	26.9	25.8	19.2	2.52	1.0
MSAS-08PFFR-SH7003	26.7	26.0	19.5	2.87	0.8
Item No.	A	B	C	D	OD

UNIT:mm		TITLE	N SEN, M12 A, SCREW RECEPTACLE, F, F, PCB R		
TOLERANCE		SCALE	3:2	SIZE	A4
.X	±0.25	REV.	A	WC-REV.	A.3
.XX	±0.1	SHEET 1 OF 2			QC: Inspection item
.XXX	±0.05				
ANGLES	±1°				

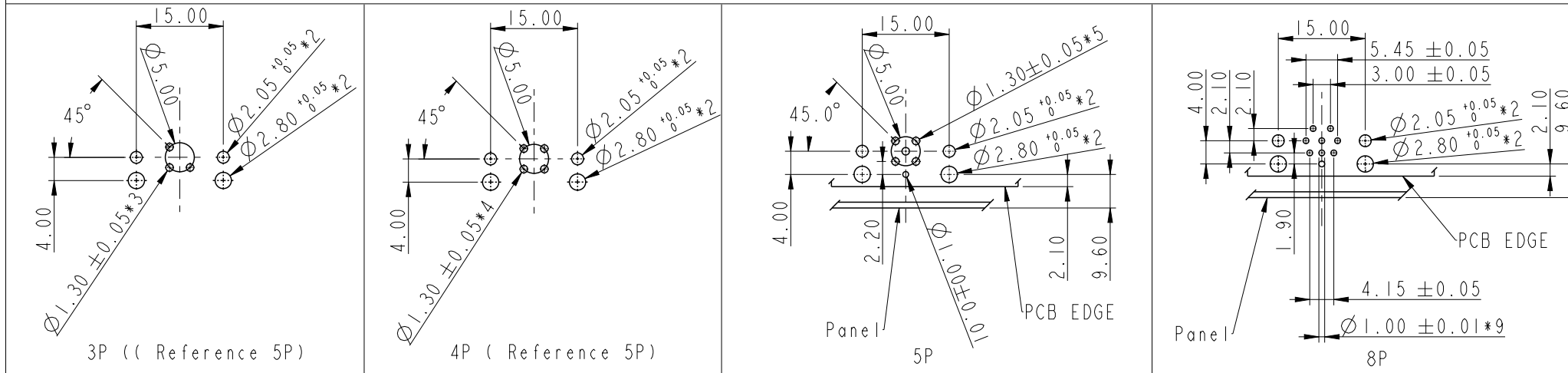
Amphenol LTW
安費諾亮泰企業股份有限公司

ITEM NO	DRAWN BY	DATE
DWG NO	CHECKED BY	DATE
CUSTOMER	APPROVED BY	DATE
MSAS-XXPFFR-SH7003	Leon	2022/03/07
ALTW	Wen	2022/03/07
	Neo	2022/03/07

THIS DOCUMENT IS SUBJECT TO CHANGE WITHOUT NOTICE. IT IS CONFIDENTIAL AND A PROPERTY OF Amphenol LTW. DISCLOSURE TO THIRD PARTY HAS TO BE AUTHORIZED BY Amphenol LTW.



PCB Layout



UNIT:mm		TITLE		ITEM NO		DRAWN BY		DATE	
TOLERANCE		N SEN, M12 A, SCREW		DWG NO		Leon		2022/03/07	
.X		RECEPTACLE, F, F, PCB R		MSAS-XXPFFR-SH7003		Wen		2022/03/07	
.XX		SCALE	3:2	SIZE	A4	SHEET		2	
.XXX		REV.	A	WC-REV.		A.3		2022/03/07	
ANGLES		QC:Inspection item		CUSTOMER		ALTW		2022/03/07	

Amphenol LTW
安費諾亮泰企業股份有限公司

X-ON Electronics

Largest Supplier of Electrical and Electronic Components

Click to view similar products for [Circular Metric Connectors](#) category:

Click to view products by [Amphenol](#) manufacturer:

Other Similar products are found below :

[600X518037X](#) [MA1EAF1200](#) [6STD15PCR99B70A](#) [8R4000A16M020](#) [8R4A00A18M020](#) [8R5000A16M005](#) [1200910008](#) [1200910011](#)
[1300140094](#) [130203-0054](#) [1300150099](#) [RF-12S1N8A90DU](#) [1-3637-600-5205](#) [1612618](#) [8R4006A16M010](#) [8R5006A18A120](#) [1604232](#)
[1R3006A20M005](#) [RF-12P1N8A80DU](#) [RF-12P1N8A90DU](#) [41-01016](#) [41-40011](#) [41-40017](#) [42-01015](#) [4-22279-4](#) [4-22281-1](#) [4-22284-9](#) [43-](#)
[00002](#) [43-01166](#) [41-40005](#) [41-40016](#) [43-00161](#) [43-01191](#) [XS3P-M421-2](#) [600X518050X](#) [SACC-DSI-FS-5P-PG9-L180 SC](#) [8R4006A16A120](#)
[8R4000A16M010](#) [RKC 50/16](#) [1R3004A20A1201](#) [6-22279-3](#) [N03FA03144](#) [1300140077](#) [XS8A-0441](#) [859RD04-103R004](#) [860RD04-113R004](#)
[860RD04-213R004](#) [860-X08-213R004](#) [1-213245-2](#) [2273142-2](#)