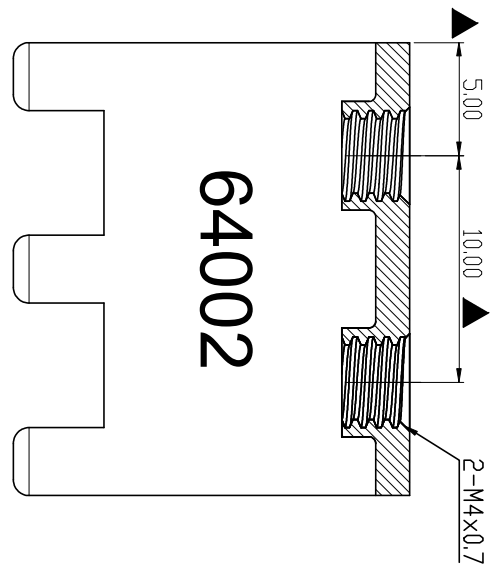
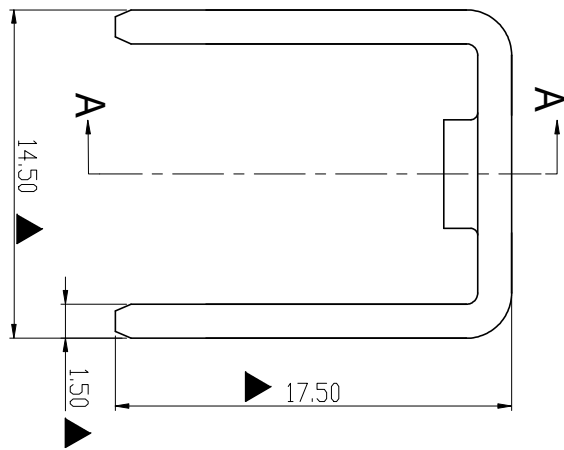
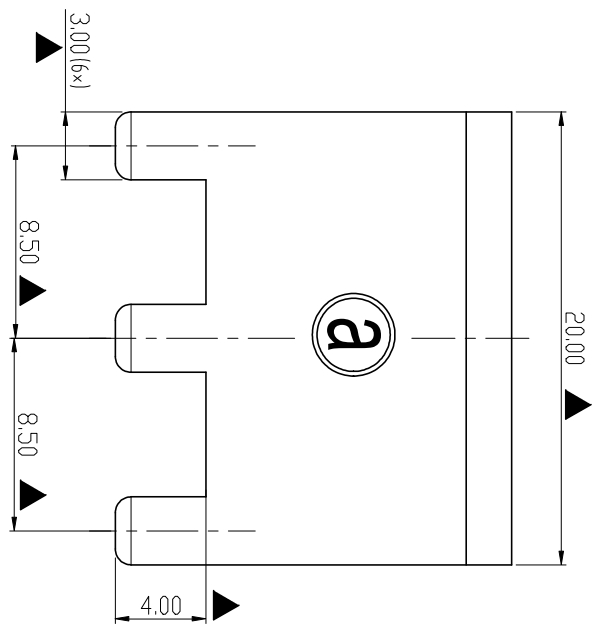


ROHS Compliant

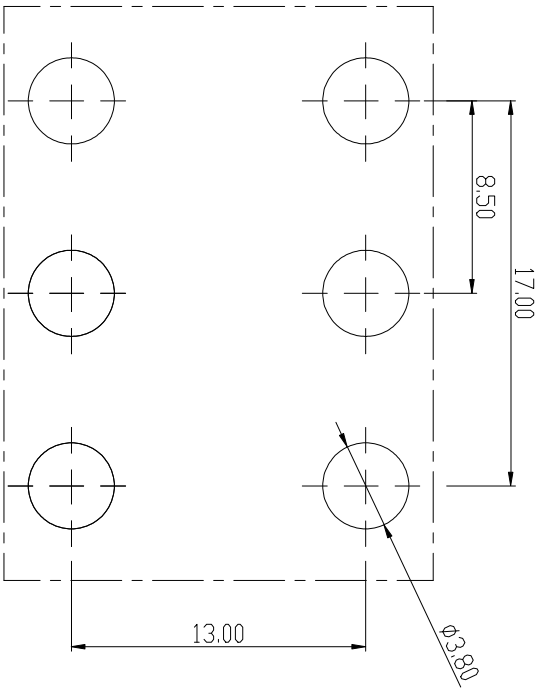
Rev.	Sign	Date	Description	Approver
THIS IS CAD DRAWING. DO NOT REVISE MANUALLY!!!				



SECTION A-A

64002

- Technical Specification:
1. Material: Copper alloy ,Matte Tin Plated
 2. Current: 135A.
 3. Torque: 15 lbf.in.
 4. Mark "▲" is the Critical dimension.



PCB LAYOUT

Amphenol ANYTEK		CUSTOMER COPY		ALL RIGHTS RESERVED. REPRODUCTION OR ISSUE TO THIRD PARTIES IN ANY FORM WHATSOEVER IS NOT PERMITTED WITHOUT WRITTEN AUTHORITY FROM THE PROPRIETOR. PROPERTY OF ANYTEK TECHNOLOGY CO., LTD	
TITLE	AMT64002 Stamped terminal	DWG NO.	8AMT0029		
PART NO.	AMT0640002TH000006	CUST NO.		UNIT:	mm
APPROVED	CHECKED	DESIGNED	DRAWN	SCALE:	NONE
	Seamus 2023.10.12	Seamus 2023.10.12		REV:	A0
			Tolerance		
			>30	±0.60	
			6-30	±0.40	
			0-6	±0.30	
			ANGLES	±1°	

Amphenol ANYTEK

CUSTOMER COPY

ALL RIGHTS RESERVED. REPRODUCTION OR ISSUE TO THIRD PARTIES IN ANY FORM WHATSOEVER IS NOT PERMITTED WITHOUT WRITTEN AUTHORITY FROM THE PROPRIETOR. PROPERTY OF ANYTEK TECHNOLOGY CO., LTD

TITLE AMT64002 Stamped terminal

PART NO. AMT0640002TH000006

DWG NO. 8AMT0029

APPROVED

CHECKED

DESIGNED

DRAWN

CUST NO.

UNIT: mm

SCALE: NONE

REV: A0

Seamus

2023.10.12

Seamus

2023.10.12

SHEET: 01/01

REVISIONS

ANGLES

±1°

X-ON Electronics

Largest Supplier of Electrical and Electronic Components

Click to view similar products for [Terminals category](#):

Click to view products by [Amphenol manufacturer](#):

Other Similar products are found below :

[00-054007-01074-6](#) [00-054007-70206-1](#) [00-054007-70210-8](#) [00-054007-70217-7](#) [00-054007-70228-3](#) [00-054007-70256-6](#) [00-054007-70316-7](#) [00-054007-49560-4](#) [00-054007-70209-2](#) [00-054007-70231-3](#) [00-054007-70241-2](#) [00-054007-70242-9](#) [00-054007-70246-7](#) [00-054007-70263-4](#) [00-054007-70288-7](#) [00-054007-70290-0](#) [00-054007-70300-6](#) [00-054007-70304-4](#) [01-2900-1-04412](#) [0190160084](#) [0190350008](#) [600TS-10](#) [605601-1](#) [60617-1-C](#) [61314-6-C](#) [626-0194](#) [63-S](#) [M55155/079C01](#) [M55155/099B03](#) [M55155/109H01](#) [M55155/12XH05](#) [M55155/29XJ08](#) [M55155/30-6S](#) [M55155/30-9S](#) [M55155/30XI09](#) [M6-14RSX](#) [M86700006](#) [D18-110B-C](#) [D18-110B-M](#) [701-1936](#) [701-1955](#) [701-2003](#) [701-2007](#) [701-2013](#) [701-2018](#) [701-2069](#) [701-2077-60](#) [701-2315](#) [701-2430](#) [701-2480](#)