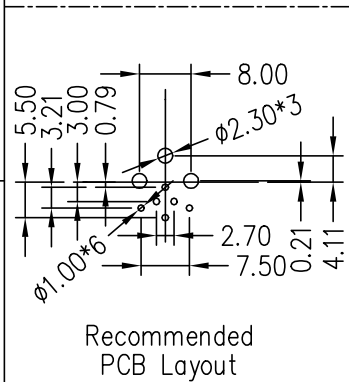
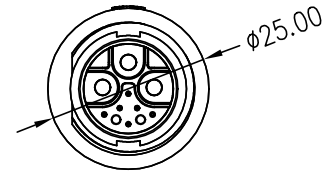
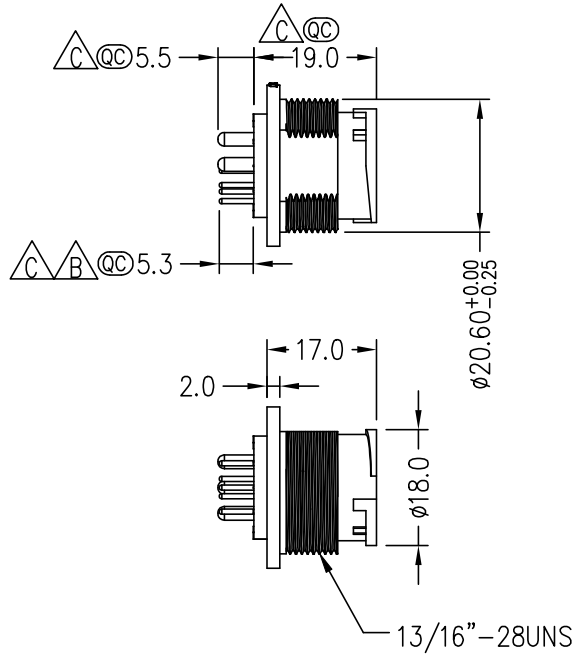
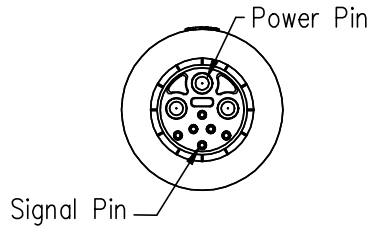
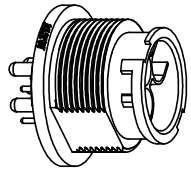
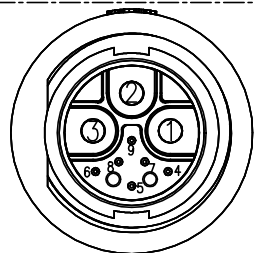


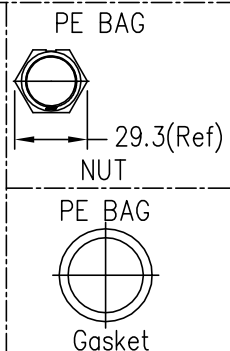
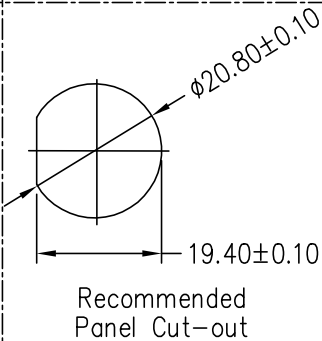
REV.	ECN NO.	DATE	SIGN	DESCRIPTION
A		2021/01/26	Yuwei Chou	Change Rev.02 to Rev.A
B	C210348	2021/03/02	Yuwei Chou	$\triangle B$ X1
C	C240293	2024/03/21	Ruru	$\triangle C$ X7



- $\triangle C$ Note:
- * RoHS Compliant
 - * \textcircled{C} Important dimension
 - * Waterproof rate: IP67, mated
 - * Connector
 - Housing: Thermoplastic, Black
 - Pin: Copper alloy, Gold plated
 - Nut: Thermoplastic, Black
 - Gasket: Rubber, Black
 - * With waterproof cap or dust cap panel thickness max: 3.0mm
 - * Without waterproof cap or dust cap panel thickness max: 4.5mm
 - * Gasket and nut are packed separately in pe bag



Conn. Pin Assignment Front View



UNIT: mm	\textcircled{C}
TOLERANCE	
.X	±0.25
.XX	±0.1
.XXX	±0.05
ANGLES	±1' \textcircled{C}

TITLE		CERES, CONN, PANEL W/O WIRE, C, 09P	
SCALE		Free	
REV.	SIZE	SHEET	OF
C	A4	1	1
		\textcircled{C} : Inspection Item	

Amphenol LTW
安費諾亮泰企業股份有限公司

ITEM NO	AAAA-CML09000071
DWG NO	AAAA-CML09000071
CUSTOMER	ALTW \textcircled{C}

DRAWN BY	Ruru
CHECKED BY	Rita
APPROVED BY	Fred

DATE	2024/03/21
DATE	2024/03/21
DATE	2024/03/21

THIS DOCUMENT IS SUBJECT TO CHANGE WITHOUT NOTICE. IT IS CONFIDENTIAL AND A PROPERTY OF Amphenol LTW. DISCLOSURE TO THIRD PARTY HAS TO BE AUTHORIZED BY Amphenol LTW.

X-ON Electronics

Largest Supplier of Electrical and Electronic Components

Click to view similar products for [Standard Circular Connector](#) category:

Click to view products by [Amphenol](#) manufacturer:

Other Similar products are found below :

[600273N007](#) [6134-336-13149](#) [6134-337-11149](#) [6134-337-2390](#) [6134-341-17149](#) [67-02E12-60PX](#) [680-SMG](#) [CXS3102A181S](#) [75-190218-10P](#) [75-474014-05S](#) [75-474211-03P](#) [75-474618-04P](#) [75-474618-04S](#) [75-474620-07P](#) [799539-000](#) [805-005-07NF11-19PC](#) [805-005-07NF15-7PA](#) [836783-1](#) [866857-1](#) [867865-1](#) [121583-0217](#) [RD10A16-19-P6CS051/1](#) [RD16A14-12-S6CS051/2](#) [1301240268](#) [1301240275](#) [14482](#) [16283-18](#) [1877910-1](#) [206039-3](#) [206323-1](#) [207682-1](#) [CA01COM-E24-28P-B-03](#) [CA06COME14SA7P](#) [JL04-1012CK\(05\)-R](#) [JL04V-2A28-11PE-R](#) [JL04V-2E10SL-3PE-B-R](#) [JL04V-2E20-15PE-B-R](#) [JL04V-2E20-4PE-B-R](#) [JL04V-2E24-10PE\(G\)-B-R](#) [JL04V-6A24-11SE-EB-R](#) [JN1AS04MK1X](#) [JN1HS10PLKS2](#) [JN2AS04MK2X-R](#) [JN2DS10SL3-R](#) [JN2FW15SL1](#) [JR16PK-10S](#) [2-206934-7](#) [24282](#) [25.320.3853.1](#) [3011-05](#)