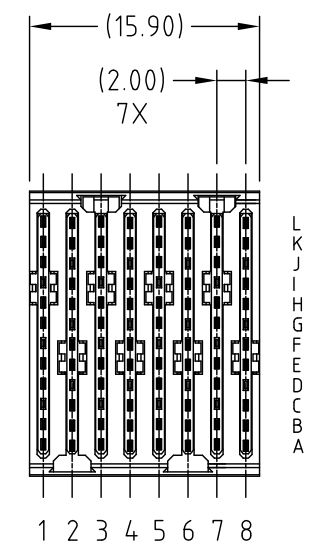
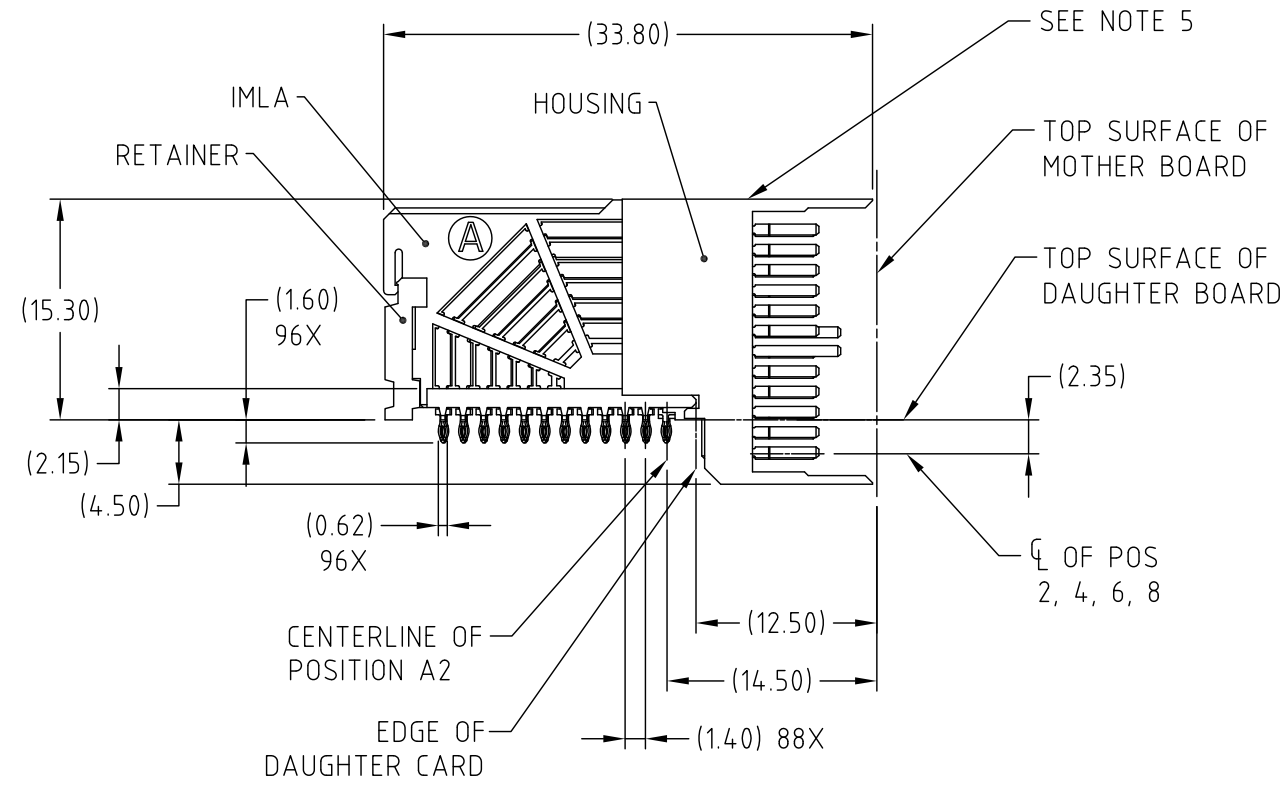


This document is the property of Amphenol Corporation and is delivered on the express condition that it is not to be disclosed, reproduced or used, in whole or in part, for manufacture or sale by anyone other than Amphenol Corporation without its prior consent, & that no right is granted to disclose or to use any information in this document.

REVISIONS				
SYM	ECN	DESCRIPTION	DATE	APPROVED
A	HK5947	RELEASE FOR CUSTOMER	11/5/09	Charles

ORDERING PN AA24008000



UNLESS OTHERWISE SPECIFIED TOLERANCES	
U.S.	METRIC
.X +/-	0.3
.XX +/-	0.1
.XXX +/-	
FRACTIONS +/-	
ANGLES +/-	2°
FOR MATERIALS AND FINISHES SEE NOTES	
REMOVE SHARP EDGES	
DIMENSIONS	
U.S.	INCHES
(METRIC)	(MM)

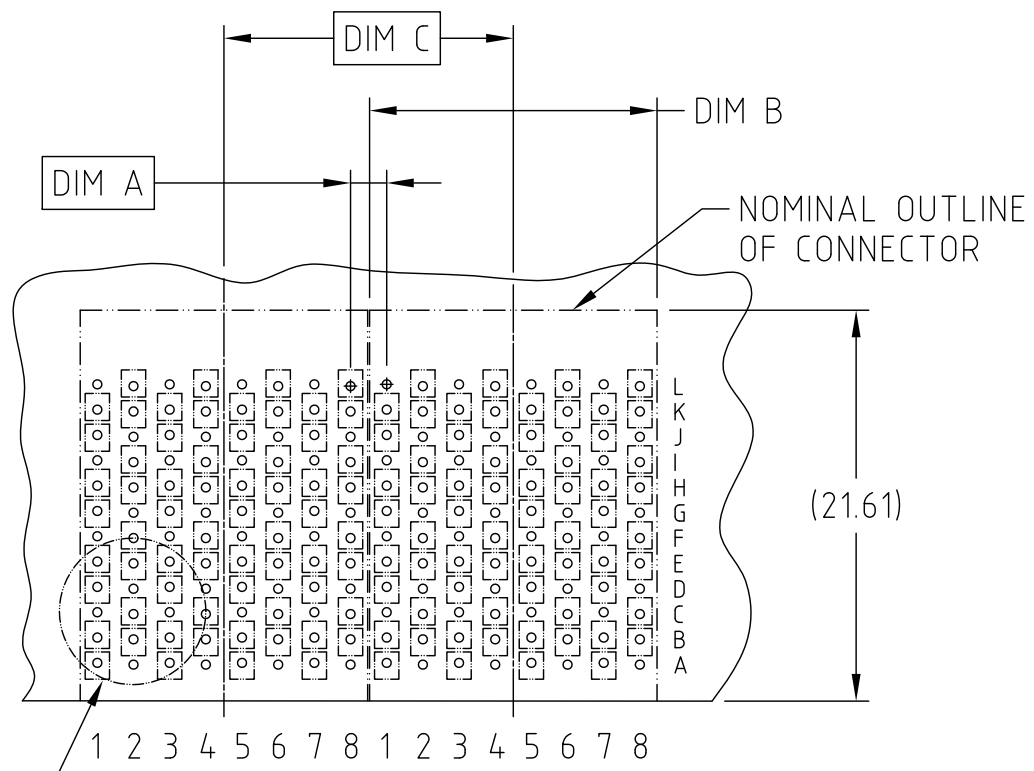
APPROVAL	DATE
DRAWN Jerry	11/5/09
CHECKED Charles	11/5/09
APPROVED	
DRAWING FILE :	
DRAWING\AMX\C AA24008000	
ANGLE OF PROJECTION	

Amphenol		
TITLE AirMax VS RA HEADER ASSY PRESS-FIT, 96 POS, 16MM		
SIZE	DRAWING NO.	REV.
A3	C AA24008000	A
SCALE	1:1	SHEET 1 OF 5

This document is the property of Amphenol Corporation and is delivered on the express condition that it is not to be disclosed, reproduced or used, in whole or in part, for manufacture or sale by anyone other than Amphenol Corporation without its prior consent, & that no right is granted to disclose or to use any information in this document.

REVISIONS				
SYM	ECN	DESCRIPTION	DATE	APPROVED
		SEE SHEET 1		

DESCRIPTION	DIM A	DIM B	DIM C
2-16MM MODULES PLACED END-TO-END	2.00	15.90 2X	16.00
1-16MM MODULE & 1-18MM MODULE PLACED END-TO-END	3.00	15.90 1X & 17.90 1X	17.00



DETAIL A

RECOMMENDED PCB LAYOUT FOR DIFFERENTIAL APPLICATIONS COMPONENT SIDE (TWO ADJACENT FOOTPRINTS SHOWN) NOTES 6 & 7



UNLESS OTHERWISE SPECIFIED TOLERANCES	
U.S.	METRIC
.X +/-	0.2
.XX +/-	0.1
.XXX +/-	0.05
FRACTIONS +/-	
ANGLES +/-	2°
FOR MATERIALS AND FINISHES SEE NOTES	
REMOVE SHARP EDGES	
DIMENSIONS	
U.S.	INCHES
(METRIC)	(MM)

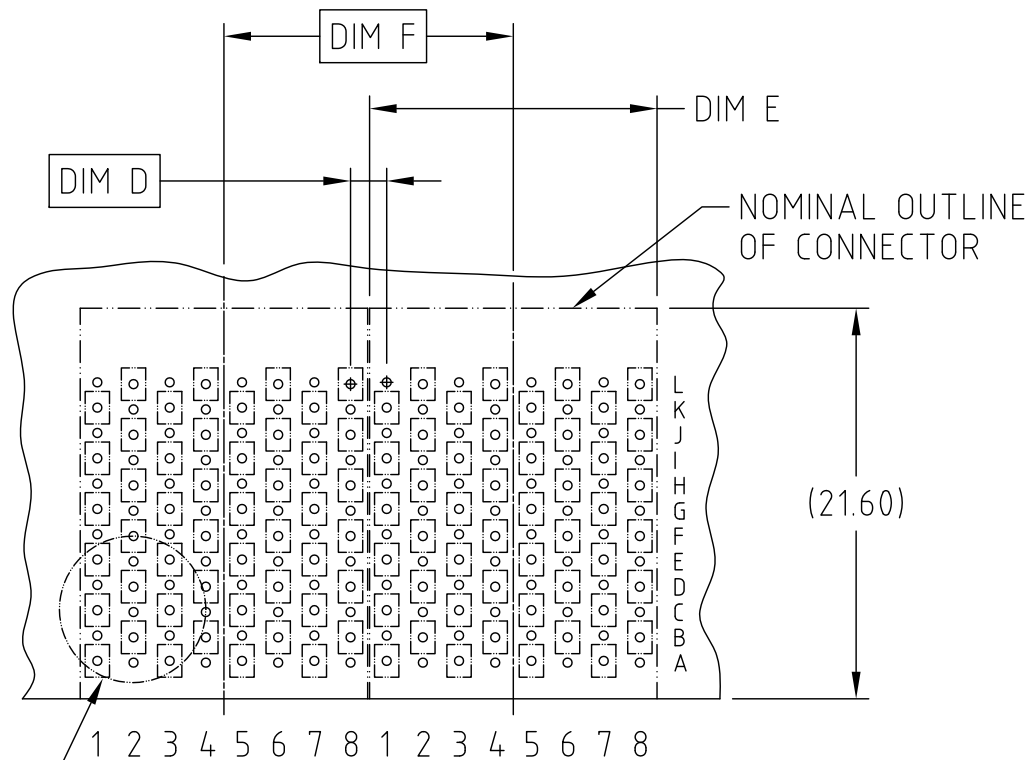
APPROVAL	DATE
DRAWN Jerry	11/5/09
CHECKED Charles	11/5/09
APPROVED	
DRAWING FILE :	
DRAWING\AMXC AA24008000	
ANGLE OF PROJECTION	

Amphenol		
TITLE		
AirMax VS RA HEADER ASSY PRESS-FIT, 96 PDS, 16MM		
SIZE	DRAWING NO.	REV.
A3	C AA24008000	A
SCALE	1:1	SHEET 2 OF 5

This document is the property of Amphenol Corporation and is delivered on the express condition that it is not to be disclosed, reproduced or used, in whole or in part, for manufacture or sale by anyone other than Amphenol Corporation without its prior consent, & that no right is granted to disclose or to use any information in this document.

REVISIONS				
SYM	ECN	DESCRIPTION	DATE	APPROVED
		SEE SHEET 1		

DESCRIPTION	DIM D	DIM E	DIM F
2-16MM MODULES PLACED END-TO-END	2.00	15.90 2X	16.00
1-16MM MODULE & 1-18MM MODULE PLACED END-TO-END	3.00	15.90 1X & 17.90 1X	17.00



DETAIL B

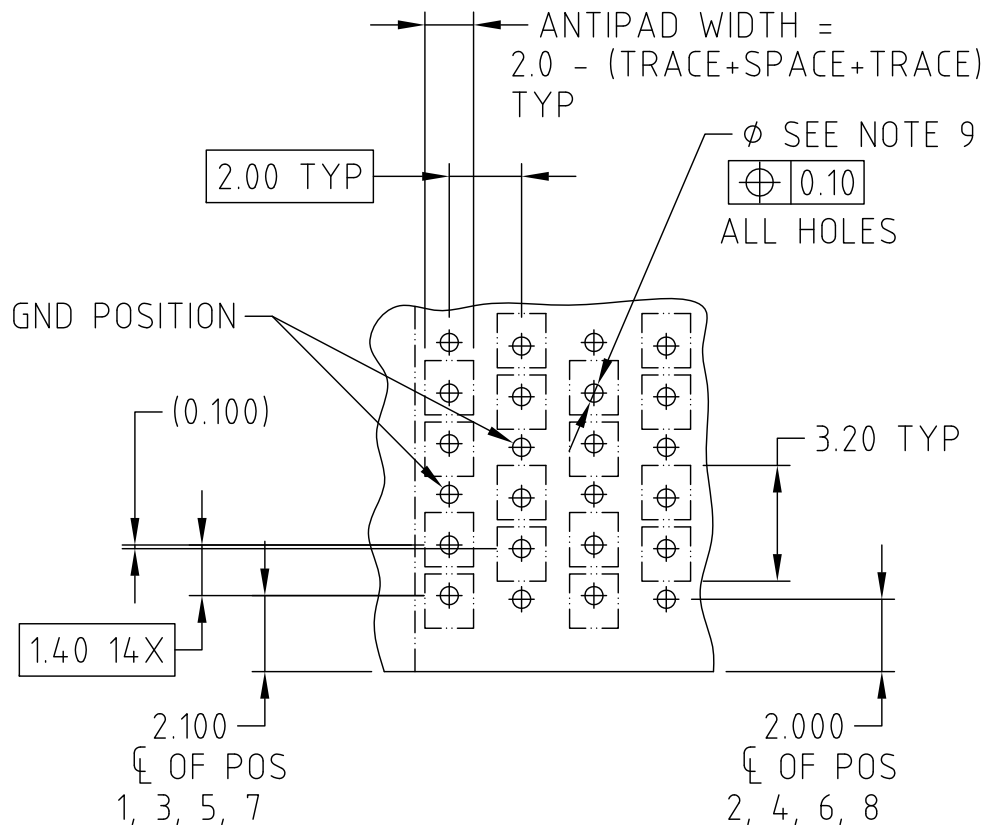
RECOMMENDED PCB LAYOUT  
FOR SINGLE ENDED APPLICATIONS  
COMPONENT SIDE  
(TWO ADJACENT FOOTPRINTS SHOWN)  
NOTES 6 & 7



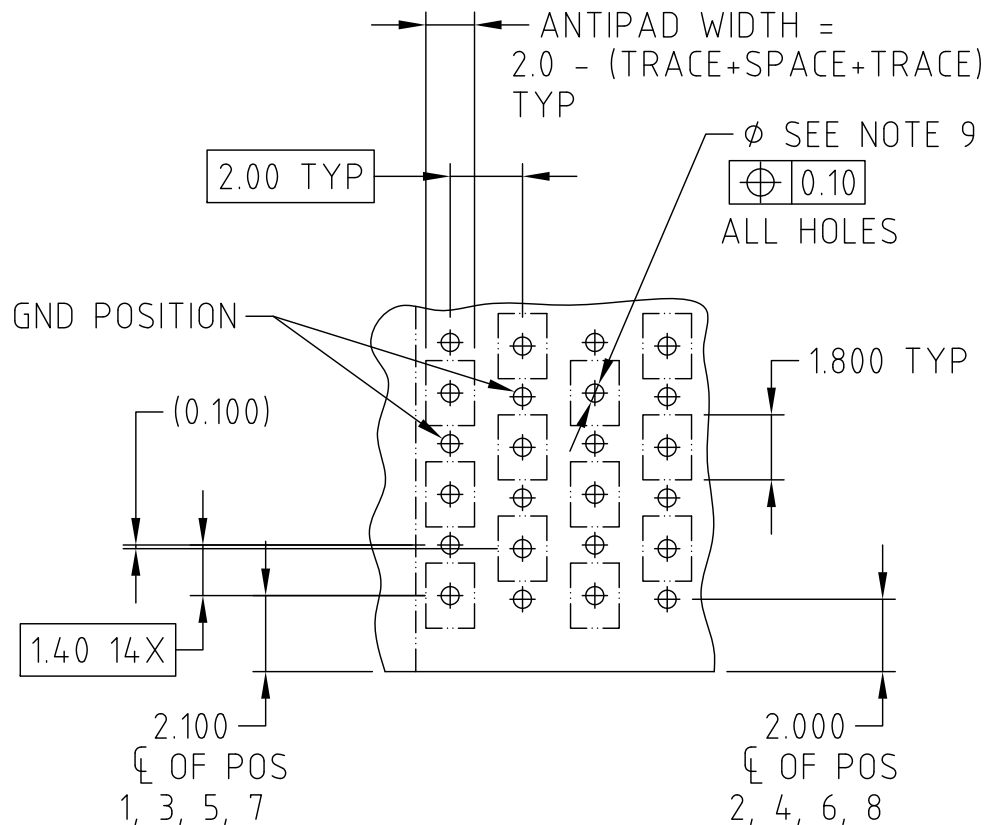
UNLESS OTHERWISE SPECIFIED TOLERANCES U.S. METRIC .X +/- 0.2 .XX +/- 0.1 .XXX +/- 0.05 FRACTIONS +/- ANGLES +/- 2°	APPROVAL	DATE	Amphenol TITLE AirMax VS RA HEADER ASSY PRESS-FIT, 96 PDS, 16MM
	DRAWN Jerry	11/5/09	
	CHECKED Charles	11/5/09	
	APPROVED		
FOR MATERIALS AND FINISHES SEE NOTES REMOVE SHARP EDGES	DRAWING FILE : DRAWING\AMX\C AA24008000		SIZE DRAWING NO. A3 C AA24008000
	DIMENSIONS U.S. INCHES (METRIC) (MM)		
SCALE 1:1			REV. A SHEET 3 OF 5

This document is the property of Amphenol Corporation and is delivered on the express condition that it is not to be disclosed, reproduced or used, in whole or in part, for manufacture or sale by anyone other than Amphenol Corporation without its prior consent, & that no right is granted to disclose or to use any information in this document.

REVISIONS				
SYM	ECN	DESCRIPTION	DATE	APPROVED
		SEE SHEET 1		



DETAIL A  
SCALE 2:1



DETAIL B  
SCALE 2:1



UNLESS OTHERWISE SPECIFIED TOLERANCES U.S. METRIC .X +/- 0.2 .XX +/- 0.1 .XXX +/- 0.05 FRACTIONS +/- ANGLES +/- 2°	APPROVAL	DATE	Amphenol AirMax VS RA HEADER ASSY PRESS-FIT, 096 PDS, 16MM
	DRAWN Jerry	11/5/09	
	CHECKED Charles	11/5/09	
	APPROVED		
FOR MATERIALS AND FINISHES SEE NOTES REMOVE SHARP EDGES	DRAWING FILE : DRAWING\AMXC AA24008000		TITLE
DIMENSIONS	ANGLE OF PROJECTION		SIZE
— U.S. — INCHES —			A3
(METRIC) (MM)			DRAWING NO. C AA24008000
			REV. A
			SCALE 1:1
			SHEET 4 OF 5

This document is the property of Amphenol Corporation and is delivered on the express condition that it is not to be disclosed, reproduced or used, in whole or in part, for manufacture or sale by anyone other than Amphenol Corporation without its prior consent, & that no right is granted to disclose or to use any information in this document.

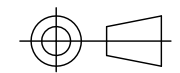
REVISIONS				
SYM	ECN	DESCRIPTION	DATE	APPROVED
		SEE SHEET 1		

NOTES:

- ① CONNECTOR MATERIALS:  
 HOUSING & RETAINER: HIGH TEMP THERMOPLASTIC, NATURAL, UL 94V-0  
 IMLA PLASTIC: HIGH TEMP THERMOPLASTIC, BLACK, UL 94V-0  
 CONTACT: COPPER ALLOY
2. CONTACT PLATING:  
 SEPARABLE INTERFACE: GOLD OVER NICKEL  
 PRESS-FIT TAILS: PURE TIN OVER NICKEL
3. PRODUCT SPECIFICATION: S-AMX-01
4. APPLICATION SPECIFICATION: S-AMX-02
- ⑤ PRODUCT MARKING, (PART NUMBER & LOT CODE), ON THIS SURFACE
- ⑥ REFER TO CUSTOMER DRAWING C AMX-PCB-001 FOR INFORMATION REGARDING PCB LAYOUT OF POWER AND GUIDE MODULES RELATIVE TO SIGNAL MODULES
- ⑦ POSITIONS F OF ODD NUMBERED COLUMNS AND POSITIONS G OF EVEN NUMBERED COLUMNS CORRESPOND TO EARLY MATE HEADER PINS
8. THERE IS NO GROUND BUSSING WITHIN THE CONNECTOR SYSTEM
- ⑨ REFER TO CUSTOMER DRAWING C AMX-PCB-002 FOR INFORMATION ON PCB HOLE DIAMETERS AND PLATING OPTIONS.



UNLESS OTHERWISE SPECIFIED <b>TOLERANCES</b> U.S. METRIC .X +/- 0.2 .XX +/- 0.1 .XXX +/- 0.05 FRACTIONS +/- ANGLES +/- 2° FOR MATERIALS AND FINISHES SEE NOTES REMOVE SHARP EDGES DIMENSIONS U.S. INCHES (METRIC) (MM)	APPROVAL DRAWN Jerry 11/5/09 CHECKED Charles 11/5/09 APPROVED	DATE 11/5/09 11/5/09	Amphenol TITLE AirMax VS RA HEADER ASSY PRESS-FIT, 96 PDS, 16MM	
	DRAWING FILE : DRAWING\AMX\C AA24008000			
	SIZE A3	DRAWING NO. C AA24008000		REV. A
	SCALE 1:1	SHEET 5 OF 5		



## X-ON Electronics

Largest Supplier of Electrical and Electronic Components

*Click to view similar products for [Circular MIL Spec Connector](#) category:*

*Click to view products by [Amphenol](#) manufacturer:*

Other Similar products are found below :

[89075GULPR](#) [0025-262-542](#) [0025-264-3014](#) [58-570121-04S](#) [0134-213-1208](#) [0134-213-2209](#) [0025-258-000](#) [60-042022-07P](#) [60-042022-19P](#)  
[60-042022-23P](#) [60-042217-10P](#) [60-042217-11P](#) [0114-201-1278](#) [012-0467-000](#) [602GB06EG24-61SN](#) [0134-201-1207](#) [0134-213-1006](#) [6104-](#)  
[207-2302](#) [6104-208-1902](#) [61-168211-04P](#) [61-168617-10P](#) [6131-202-19149P](#) [6131-204-21149P](#) [6131-208-13149P](#) [6131-209-17149P](#) [6131-](#)  
[210-11149P](#) [6131-211-19149P](#) [6131-216-19149P](#) [6131-259-21149P](#) [6131-259-23149P](#) [6131-265-17149P](#) [6131-265-19149P](#) [CS3100A18-1P-](#)  
[472](#) [CS3100A-36-77P](#) [CS3101A-16-55P](#) [CS3102A-10SL-55P](#) [CS3102A-14S-58P](#) [CS3102A-18-1P116](#) [CS3102A-32-17P](#) [CS3102A32-25S](#)  
[CS3102C18-4P-472](#) [CS3106A10SL3S004](#) [CS3106A-18-73S](#) [CS3108A-14S-52S](#) [CS3108A-28-51S](#) [6162-233-1277](#) [6162-324-1231](#)  
[M243082296Z](#) [M2884010AC1S1](#) [CT0-24-10SC](#)