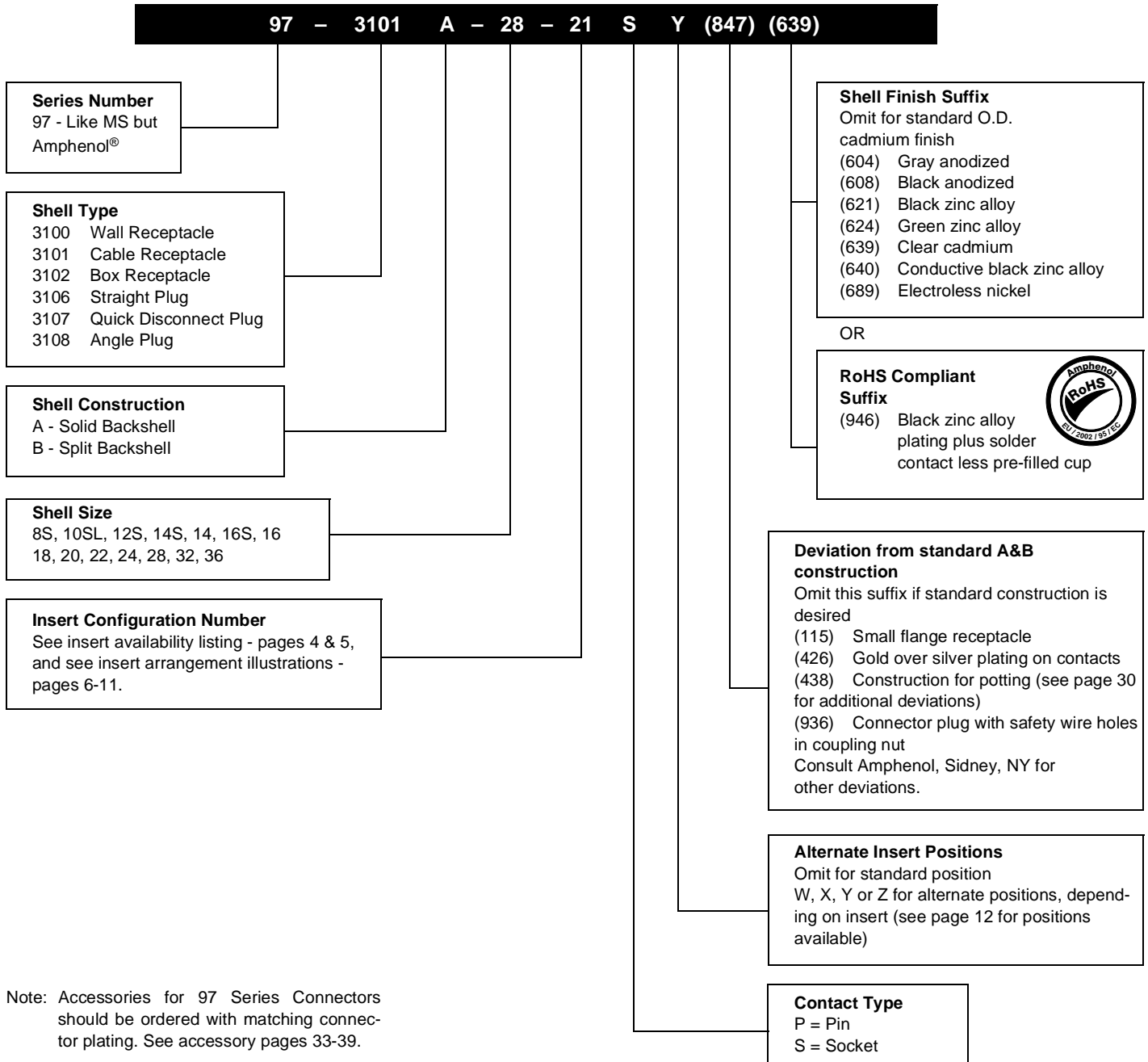


97 series solder type how to order

Example of part number for solder type connectors is given below.



Note: Accessories for 97 Series Connectors should be ordered with matching connector plating. See accessory pages 33-39.

8/29/89 16:22 * 89241 15:52 * PRELISE * 10-820080/099 C001

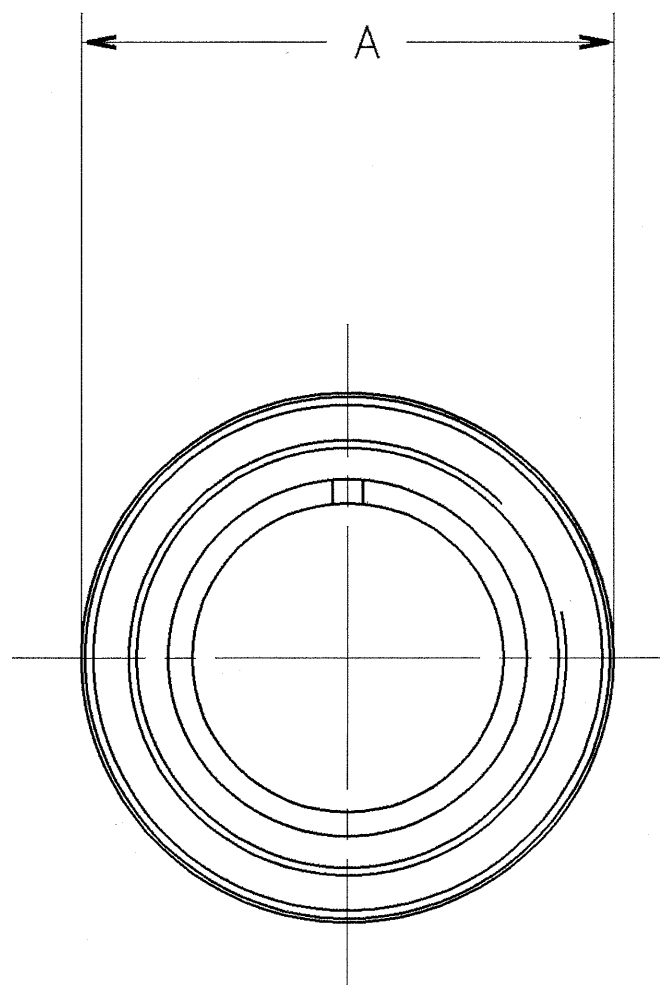
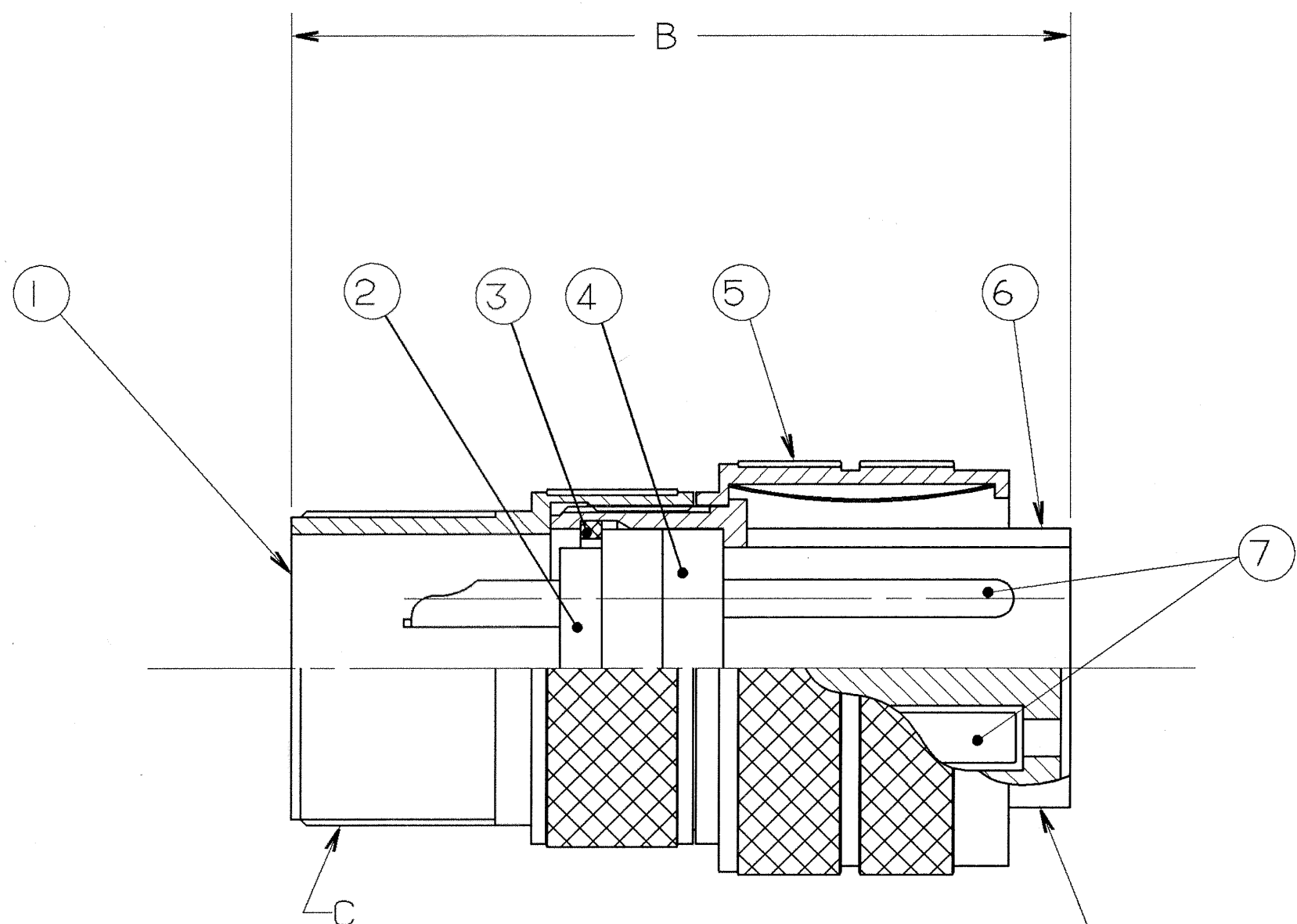
4

3

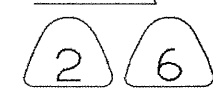
2

1

REVISIONS				
ZONE	LTR	DESCRIPTION	DATE	APPROVED
	C	(CLII) ADDED NOTE 7 ECN: 22391	08/29/89 BURNSIDE	M.N. J.B.
	D	(CLII) SEE CHANGE NOTICE ECN: 27141	8-31-92 DEMATTEO	JED
	E	(CLII) CHANGE BLOCK CHANGE ONLY WAS SHELL 10-617702-XX3 (NO SLOT) ECN: 90064	12-06-04 DEMATTEO	JED



STAMP MS OR AMPHENOL ASSEMBLY NUMBER ON THIS SURFACE. CHARACTER HEIGHT .062 MINIMUM.



FIND NO.	QTY REQD.	FSCM NO.	PART NUMBER	DESCRIPTION	NOTE REF.
7	SEE NOTE		SEE NOTE 1	CONTACTS	
6				SHELL	
5				RING, COUPLING	
4				INSERT, FRONT	
3				RING, RETAINING	
2				INSERT, REAR	
1				BACK SHELL	

UNLESS OTHERWISE SPECIFIED LINEAR DIMENSIONS ARE IN INCHES.
TOLERANCES: .XXX±.010,
.XX ±.03, .X ±.1,
ANGLES ±2°.
OTHER STANDARDS PER 9-3800 AND DOD-D-1000.
NOTE REF. =

PARTS LIST				AMPHENOL CORPORATION BENDIX CONNECTOR OPERATIONS SIDNEY, N.Y.	
SPECIFICATIONS	SIGNATURES	DATES	CONNECTOR, ELECTRICAL PLUG, QUICK DISCONNECT, TYPE 97-3107A, OLIVE DRAB CADMIUM PLATED		
MATERIAL SPEC.	PREPARED A. PRESCOTT	11/6/87			
N/A	CHECKED PHILPOTT	11/17/87			
PROCESS SPEC.	APPROVED BERNHARDT	11/17/87			
9-2437-33	APPROVED HAYNER	11/17/87	SIZE C	FSCM NO. 77820	REV E
	1ST PART NO. 10-820082-03S		SCALE NONE	WT.	REF N/A

SEE SHEET 2.
NOTES:

THE USE OF THIS DOCUMENT IS UNLIMITED. HOWEVER, DOCUMENTS REFERENCED HEREON MAY CONTAIN LIMITED RIGHTS DATA.

N/A
N/A
NEXT ASSEMBLY

COMPUTER GENERATED DRAWING.

00000001 01250 10-820080/099 SHEET 1 OF 2 TAB.

97-3107A

7/29/89 16:22 * 89241 15:15 * PRELISE * 10-820080/099 0002

4

3

2

1

BENDIX ASSEMBLY NUMBER	AMPHENOL ASSEMBLY NUMBER	MS ASSEMBLY NUMBER	A DIA. MAX	B MAX	C THREAD
10-820080-()	97-3107A- 8S -()	MS3107A- 8S -()	NOT AVAILABLE		
10-820081-()	-10S -()	-10S -()	1.375	1.531	.5000-28 UNEF-2A
10-820082-()	-10SL-()	-10SL-()	1.375	1.531	.6250-24 UNEF-2A
10-820083-()	-12S -()	-12S -()	1.500	1.688	.6250-24 UNEF-2A
10-820084-()	-12SL-()	-12SL-()	NOT AVAILABLE		
10-820085-()	-12 -()	-12 -()	1.500	2.062	.6250-24 UNEF-2A
10-820086-()	-14S -()	-14S -()	1.625	1.688	.7500-20 UNEF-2A
10-820087-()	-14 -()	-14 -()	1.625	2.062	.7500-20 UNEF-2A
10-820088-()	-16S -()	-16S -()	1.750	1.688	.8750-20 UNEF-2A
10-820089-()	-16 -()	-16 -()	1.750	2.062	.8750-20 UNEF-2A
10-820090-()	-18 -()	-18 -()	1.875	2.062	1.0000-20 UNEF-2A
10-820091-()	-20 -()	-20 -()	2.000	2.188	1.1875-18 UNEF-2A
10-820092-()	-22 -()	-22 -()	2.125	2.188	1.1875-18 UNEF-2A
10-820093-()	-24 -()	-24 -()	2.250	2.312	1.4375-18 UNEF-2A
10-820094-()	-28 -()	-28 -()	2.500	2.312	1.4375-18 UNEF-2A
10-820095-()	-32 -()	-32 -()	NOT AVAILABLE		
10-820096-()	-36 -()	-36 -()	NOT AVAILABLE		
10-820097-()	-40 -()	-40 -()	NOT AVAILABLE		
10-820098-()	-44 -()	-44 -()	NOT AVAILABLE		
10-820099-()	-48 -()	-48 -()	NOT AVAILABLE		

D

D

C

C

B

97-3107A
B

A

A

TO COMPLETE, ADD APPLICABLE INSERT ARRANGEMENT SUFFIX PER 9-2437-33.

6

7. IDENTIFY PACKAGE WITH APPLICABLE MS OR 97- PART NUMBER PER NOTE 6.
6. FOR BENDIX INSERT ARRANGEMENT SUFFIX -1 THROUGH -49, STAMP MS ASSEMBLY NUMBER. FOR BENDIX INSERT ARRANGEMENT SUFFIX -50 THROUGH -99, AND -AA THROUGH -BC, STAMP AMPHENOL ASSEMBLY NUMBER.
5. FOR CONTACT ARRANGEMENT, SEE MIL-STD-1651 AND L-22208-() THROUGH L-22248-().
4. PACKAGE PER PRODUCTION PROCESS SHEET.
3. UNITS MEET THE APPLICABLE REQUIREMENTS OF MIL-C-5015.
2. SEE WORK ORDER FOR PERMISSIBLE ADDITIONAL OR ALTERNATE STAMPING.
1. SEE SEPARATE PARTS LIST FOR COMPONENT PART NUMBERS AND QUANTITIES.

NOTES:

THE USE OF THIS DOCUMENT IS UNLIMITED. HOWEVER, DOCUMENTS REFERENCED HEREON MAY CONTAIN LIMITED RIGHTS DATA.

SIZE	FSCM NO.	REV.
C	77820	E
SCALE	WT.	REF
		SHEET 2

COMPUTER GENERATED DRAWING

IMAGED / Dec 06 2004, 04:26 PM

TAB.