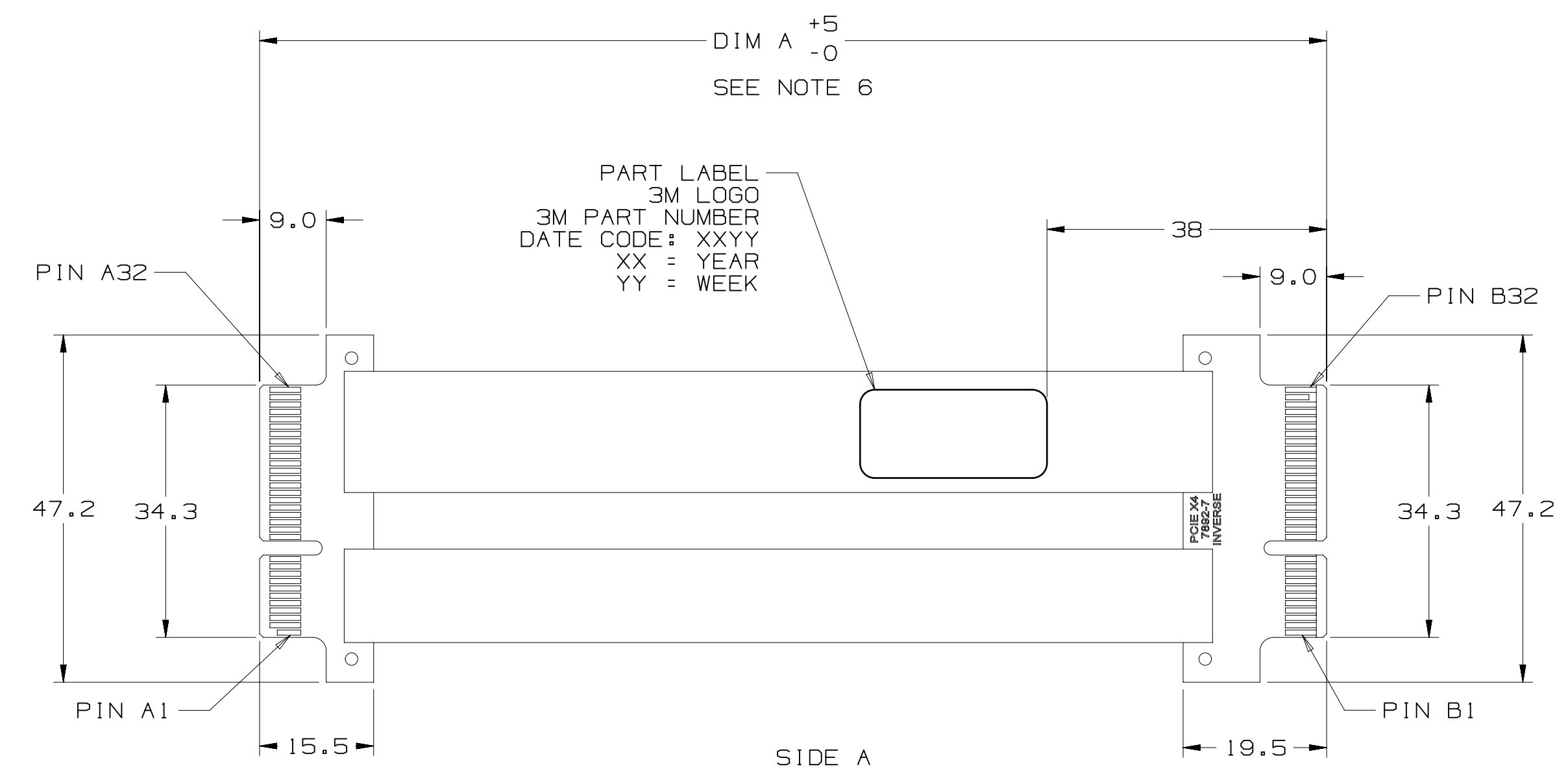
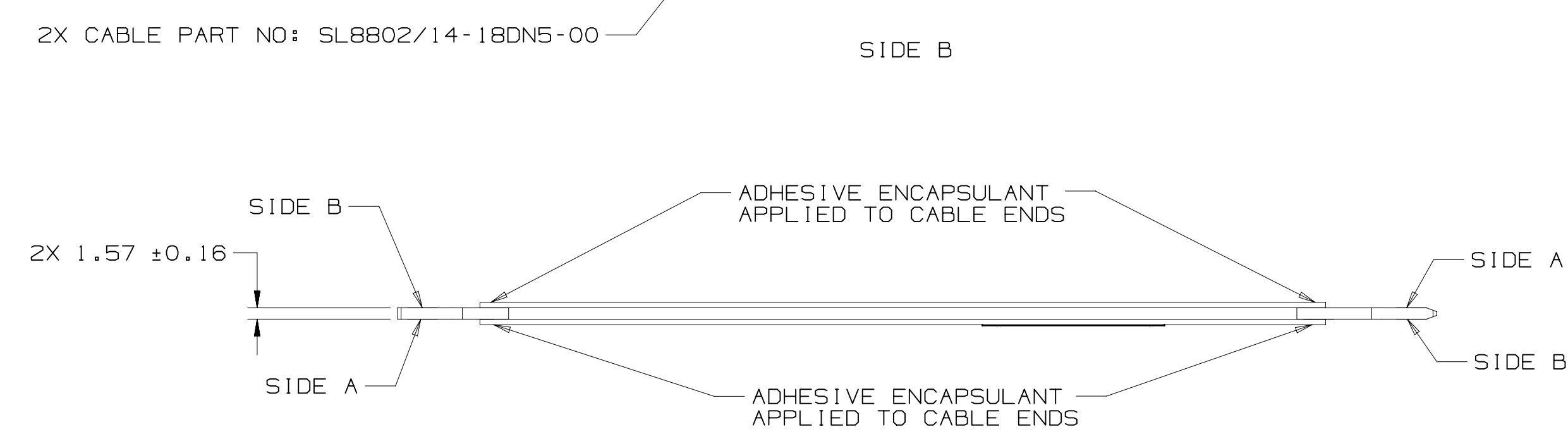
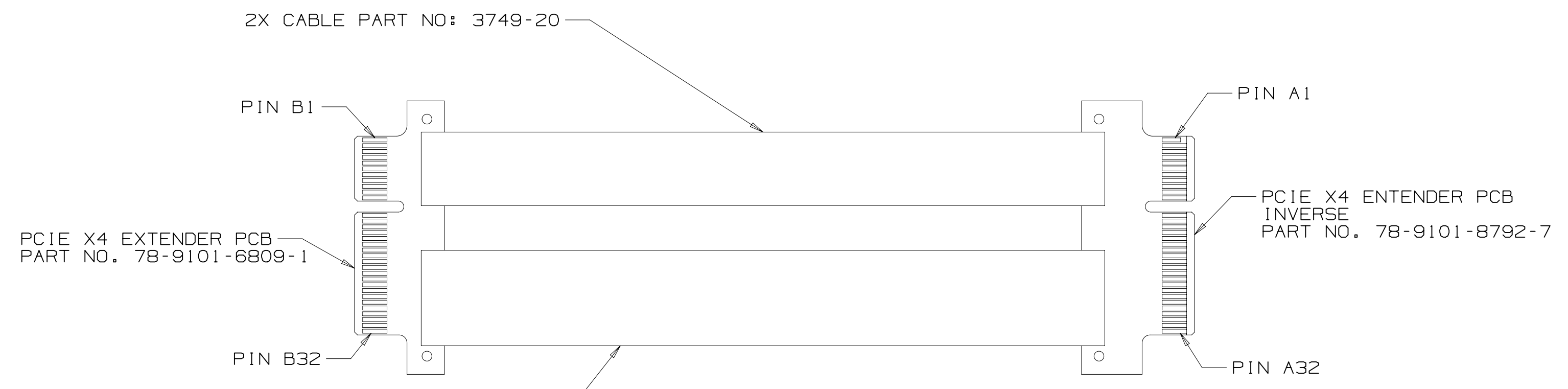


3M™ TWIN AXIAL PCI EXPRESS X4 MALE-TO-MALE CABLE ASSEMBLY



BILL OF MATERIALS			
	ITEM	DESCRIPTION	QTY
1.0	PCB	PCIE X4 EXTENDER (64 POS) CARD-EDGE INVERSE 3M P/N: 78-9101-8792-7	1
2.0	PCB	PCIE X4 EXTENDER (64 POS) CARD-EDGE 3M P/N: 78-9101-6809-1	1
3.0	CABLE	RIBBON TWIN AX CABLE 3M P/N: SL8802/14-18DN5-00	2
4.0	CABLE	RIBBON CABLE, 20 POSITION 3M P/N: 3749-20	2
5.0	STRAIN RELIEF	ADHESIVE	AS REQUIRED

- NOTES
- DIMENSIONS ARE IN MILLIMETERS.
 - 3M™ RIBBON TWINAX DESCRIPTION:
30 AWG, SILVER PLATED SIGNAL WIRE
IMPEDANCE: 85 ±5 OHM
OVERALL RIBBON WIDTH: 24.90 MM
OVERALL RIBBON THICKNESS: 0.75 MM
 - ROHS COMPLIANT. SEE REGULATORY INFORMATION APPENDIX IN "ROHS COMPLIANCE" SECTION AT WWW.3MCONNECTORS.COM (E1 & C1 APPLY)
 - THIS CABLE CONSTRUCTION HAS A THIN ALUMINUM LAYER AT EACH EDGE. USER SHOULD EVALUATE ITS USE IN THEIR APPLICATION AND, IF NECESSARY, INSULATING TAPE MAY BE APPLIED TO COVER THE ALUMINUM LAYER, AS USER DEEMS APPROPRIATE.
 - APPLICABLE SPECIFICATIONS:
PRODUCT SPECIFICATION NUMBER:
TWIN AX CABLE: PS-0106
CABLE ASSEMBLY: PS-0137
 - ORDER BY APPLICABLE 3M PART NUMBER:
8KJ2-0743-XXXX
XXXX = DIM 'A' IN MILLIMETERS
(1000 = 1 METER)

STANDARD LENGTH (DIM 'A')
8KJ2-0743-0250 (250 MM)
8KJ2-0743-0500 (500 MM)

NON-STANDARD LENGTHS AVAILABLE UPON SPECIAL REQUEST. MAY REQUIRE HIGHER MOQS AND LONGER LEAD TIMES.
 - FLAMMABILITY RATING:
TWIN AX CABLE: UL94 HB
PCBS: UL94V-0
 - PADLECARD FINGER GOLD THICKNESS:
0.76 μm [30 μ"] MIN ELECTROLYTIC
HARD GOLD OVER 1.27 μm [50 μ"]
MIN ELECTROLYTIC NICKEL.

REV	ECO	ISSUE DATE AND DESCRIPTION	DRFT	CHKD
D	84237	APR 23, 2019 REVISED PART LABEL	LDS	TS
C	77066	DEC 20, 2017 ADDED URL AND TRADEMART NOTES SH1, ZONE A9; ADDED SH3, WARRANTY, INFO NOTES; ADDED NOTE TO CLARIFY PINOUTS, SH2, ZONE A5	AD	LS
B	48418	JUN 19, 2013 ADDED SIDE A & SIDE B INDICATORS	LDS	TS
A	46893	MAR 28, 2013 WORK REQUEST 11618 INITIAL RELEASE	LDS	TS

DESIGN REFERENCE NEXT ASSEMBLY

REV: L SCHMIDT DATE: MAR 28, 2013 MFG DATE: MAR 28, 2013

APPR: T SUNIGA DATE: MAR 28, 2013

DO NOT SCALE DRAWING

SCALE: 1/1

TOLERANCES EXCEPT AS NOTED

INCHES: .00 ±, .000 ±, .0000 ±

MILLIMETERS: 0 ±1, .0 ±.5, .00 ±.05, .000 ±.005

THIRD ANGLE PROJECTION

INTERPRET PER ASME Y14.5 - 2009

MAX SURFACE ROUGHNESS: 125, ALL SURFACES, MARKED ONLY

ANGLES: ±1°

3M Center St. Paul, MN 55144

© 3M COPYRIGHT 2019. This document and the information it contains are 3M property and may not be reproduced or further distributed without 3M permission, or used or disclosed other than for 3M authorized purposes. All rights reserved.

TITLE: 8KJ2-0743-XXXX, CABLE ASSY, MALE PCIE X4 TO MALE PCIE X4

CAGE NUMBER: D 78-5100-2587-3

REV. NUMBER: D

MODEL: SHT 1 OF 3

3M ELECTRONICS MATERIALS SOLUTIONS
DIVISION
INTERCONNECT SOLUTIONS
<http://www.3mconnectors.com>
3M IS A TRADEMARK OF 3M COMPANY.
FOR TECHNICAL, SALES OR ORDERING
INFORMATION CALL 800-225-5373

78-5100-2587-3 DRAWING NUMBER
UTC Drr-set (hrs) 6
Imaged: Central Standard Time 5/15/2019

Regulatory: For regulatory information about this product, visit 3M.com/regs or contact your 3M representative.

Technical Information: The technical information, recommendations and other statements contained in this document are based upon tests or experience that 3M believes are reliable, but the accuracy or completeness of such information is not guaranteed.

Product Use: Many factors beyond 3M's control and uniquely within user's control can affect the use and performance of a 3M product in a particular application. Given the variety of factors that can affect the use and performance of a 3M product, user is solely responsible for evaluating the 3M product and determining whether it is fit for a particular purpose and suitable for user's method of application.

Warranty, Limited Remedy, and Disclaimer: Unless an additional warranty is specifically stated on the applicable 3M product packaging or product literature, 3M warrants that each 3M product meets the applicable 3M product specification at the time 3M ships the product. 3M MAKES NO OTHER WARRANTIES OR CONDITIONS, EXPRESS OR IMPLIED, INCLUDING, BUT NOT LIMITED TO, ANY IMPLIED WARRANTY OR CONDITION OF MERCHANTABILITY OR FITNESS FOR A PARTICULAR PURPOSE OR ANY IMPLIED WARRANTY OR CONDITION ARISING OUT OF A COURSE OF DEALING, CUSTOM OR USAGE OR TRADE. If the 3M product does not conform to this warranty, then the sole and exclusive remedy is, at 3M's option, replacement of the 3M product or refund of the purchase price.

Limitation of Liability: Except where prohibited by law, 3M will not be liable for any loss or damage arising from the 3M product, whether direct, indirect, special, incidental or consequential, regardless of the legal theory asserted, including warranty, contract, negligence or strict liability.


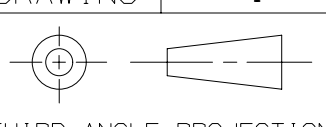
3M Electronics Materials Solutions Division
 6801 River Place Blvd.
 Austin, TX 78726-9000
 1-800-225-5373
www.3M.com/interconnect

3M ELECTRONICS MATERIALS SOLUTIONS
 DIVISION
 INTERCONNECT SOLUTIONS
<http://www.3mconnectors.com>

3M IS A TRADEMARK OF 3M COMPANY.
 FOR TECHNICAL, SALES OR ORDERING
 INFORMATION CALL 800-225-5373

REV	ECO	ISSUE DATE AND DESCRIPTION	DRFT	CHKD
D	84237	APR 23, 2019 REVISED PART LABEL	LDS	TS
C	77066	DEC 20, 2017 ADDED URL AND TRADEMART NOTES SH1, ZONE A9; ADDED SH3, WARRANTY, INFO NOTES; ADDED NOTE TO CLARIFY PINOUTS, SH2, ZONE A5	AD	LS
B	48418	JUN 19, 2013 ADDED SIDE A & SIDE B INDICATORS	LDS	TS
A	46893	MAR 28, 2013 WORK REQUEST 11618 INITIAL RELEASE	LDS	TS

DESIGN REFERENCE	NEXT ASSEMBLY	REV	ECO	ISSUE DATE AND DESCRIPTION	DRFT	CHKD
		L	SCHMIDT	MAR 28, 2013		
APPROVED	DATE	APPROVED	DATE	APPROVED	DATE	APPROVED
		T	SUNIGA	MAR 28, 2013		

DO NOT SCALE DRAWING	SCALE 1/1	TOLERANCES EXCEPT AS NOTED	 © 3M COPYRIGHT 2019 This document and the information it contains are 3M property and may not be reproduced or further distributed without 3M permission, or used or disclosed other than for 3M authorized purposes. All rights reserved.
THIRD ANGLE PROJECTION		INCHES .00 ± .000 ± .0000 ±	
INTERPRET PER ASME Y14.5 - 2009	MILLIMETERS	0 ± 1	TITLE 8KJ2-0743-XXXX, CABLE ASSY, MALE PCIE X4 TO MALE PCIE X4
MAX SURFACE ROUGHNESS	<input type="checkbox"/> ALL SURFACES <input checked="" type="checkbox"/> MARKED ONLY	.0 ± .5 .00 ± .05 .000 ± .005	
125		ANGLES ± 1°	CAGE NUMBER D 78-5100-2587-3
			DRAWING NO. 78-5100-2587-3
			REV. D
			MODEL DET. <input type="checkbox"/> YES <input checked="" type="checkbox"/> NO SHT 3 OF 3

78-5100-2587-3
 DRAWING NUMBER
 6
 D
 REV. 1
 6
 (hrs)
 Drr-set
 -- UTC
 5/15/2019
 Standard
 Central
 Time

X-ON Electronics

Largest Supplier of Electrical and Electronic Components

Click to view similar products for 3M manufacturer:

Other Similar products are found below :

[SC401U](#) [98-0003-3071-6](#) [FP301-3/16-48"-RED-HDR-25 PCS](#) [929665-01-03-EU](#) [N3428-6003RB](#) [00-054007-70220-7](#) [00-054007-34717-0](#)
[021200-40230](#) [6-5-F9460PC](#) [6840-2X50-GRAY](#) [701-W](#) [FDV14-187C](#) [FE-5100-5290-8](#) [812510-100](#) [8204-3LFM](#) [MNG14BCX](#) [FP301-1-6"-](#)
[Clear](#) [FP301-1/8-6"-Black](#) [FP301-2-48"-Black-Bulk](#) [FV14-6C](#) [920102-01-25-R](#) [923835-BK-C](#) [927739-40](#) [929835-01-28-RK](#) [929974-01-40-](#)
[R](#) [951240-2520-AR-PR](#) [960X/980X](#) [98-0003-3075-7](#) [1/2-5-5430](#) [1/2-5-850S](#) [1/2-5-3431](#) [1/2-5-850R](#) [12X12-6-4056B](#) [12X12-6-433](#) [12X12-](#)
[6-4930](#) [13-38-P](#) [13-500-NB](#) [1-4-4658F](#) [DSTK9013-3420](#) [DSTK9015-3402](#) [14B26-SZLB-A00-0LC](#) [14T50-SZWB-100-0NC](#) [152244-0110-](#)
[GB](#) [1-5-3437](#) [1-5-4496W](#) [1-5-4932](#) [1-5-4943F](#) [1-5-363](#) [1-5-5451](#) [1-5-421](#)