

(2.00 mm) .0787"

CLT SERIES

LOW PROFILE DUAL WIPE SOCKET

SPECIFICATIONS

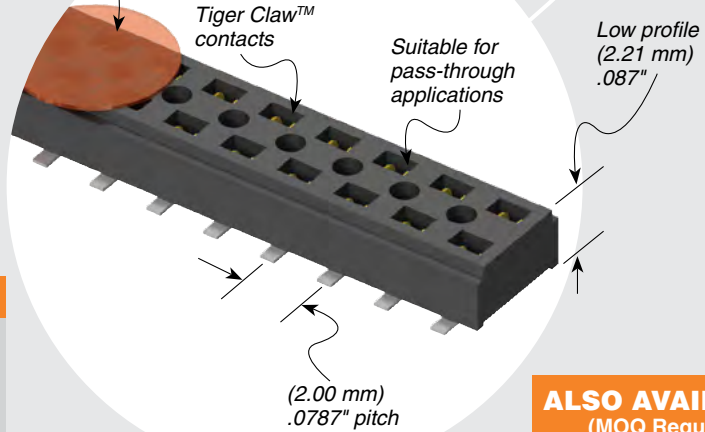
For complete specifications and recommended PCB layouts see www.samtec.com?CLT

Insulator Material: Black Liquid Crystal Polymer
Contact Material: Phosphor Bronze
Plating: Sn or Au over 50 μ" (1.27 μm) Ni
Current Rating (TMMH/CLT): 4.1 A per pin (1 pin powered per row)
Operating Temp Range: -55 °C to +125 °C
Contact Resistance: 10 mΩ
Insertion Depth:
 Top Entry= (1.40 mm) .055" minimum
 Bottom Entry= (2.57 mm) .101" minimum (add board thickness for correct post OAL)
Max Cycles: 100 with 10 μ" (0.25 μm) Au
RoHS Compliant: Yes

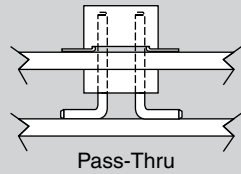
Mates with: TMM, TMMH, MTMM, MMT, TW, TSH



Available with optional Pick & Place Pads



APPLICATION



ALSO AVAILABLE (MOQ Required)

- Other platings
- Contact Samtec.

PROCESSING

Lead-Free Solderable: Yes
SMT Lead Coplanarity:
 (0.10 mm) .004" max (02-25)
 (0.15 mm) .006" max (26-34)
 (0.20 mm) .008" max (35-50)

RECOGNITIONS

For complete scope of recognitions see www.samtec.com/quality



FILE NO. E111594

CLT	1	NO. PINS PER ROW	LEAD STYLE	PLATING OPTION	D	OTHER OPTIONS
		02 thru 50	<p>-01 = Through-hole</p> <p>-02 = Surface Mount</p> <p>-03 = Through-hole</p>	<p>-F = Gold flash on contact, Matte Tin on tail</p> <p>-L = 10 μ" (0.25 μm) Gold on contact, Matte Tin on tail</p> <p>-G = 10 μ" (0.25 μm) Gold on contact, Gold flash on tail</p>		<p>All options require Style -02</p> <p>-BE = Bottom Entry (Required for bottom entry applications)</p> <p>-A = Alignment Pin (3 positions minimum) Metal or plastic at Samtec's discretion</p> <p>-K = (5.00 mm) .197" DIA Polyimide Film Pick & Place Pad (04 thru 50 only)</p> <p>-P = Pick & Place Pad (4 positions minimum) (Not always necessary for auto placement.)</p> <p>-TR = Tape & Reel Packaging (36 positions max)</p>

LEAD STYLE	A
-01	(2.16) .085
-03	(2.95) .116

Technical drawing details:
 -01 or -03: (3.02) .119
 -02: (2.27) .090, (5.16) .203
 -A: (0.81) .032, (0.64) .025 DIA
 -K: (5.08) .200 x (5.71) .225
 -P: (4.00) .157, (2.00) .0787, (0.51) .020, (2.13) .084

Note: Some lengths, styles and options are non-standard, non-returnable.

X-ON Electronics

Largest Supplier of Electrical and Electronic Components

Click to view similar products for [Board to Board & Mezzanine Connectors](#) category:

Click to view products by [Samtec](#) manufacturer:

Other Similar products are found below :

[10135583-642402LF](#) [89885-310LF](#) [589158040000018](#) [6-1393048-0](#) [68683-613](#) [MDF7-12DP-2.54DSA](#) [MDF7-18P-2.54DSA\(01\)](#) [MDF7-20DP-2.54DSA](#) [MDF7-26D-2.54DSA\(55\)](#) [MDF7-3P-2.54DSA\(01\)](#) [MDF7B-3P-2.54DSA\(55\)](#) [MDF7C-11P-2.54DSA\(55\)](#) [MDF7C-18P-2.54DSA\(55\)](#) [MDF7C-5P-2.54DSA\(01\)](#) [MDF7P-5P-2.54DSA\(55\)](#) [75234-0516](#) [FCN-230C068-11](#) [FCN-268F012-G/BD](#) [FCN-268F036-G/BD](#) [FCN-268M012-G/0D](#) [FCN-268M024-G/1D](#) [FCN-360C008-C](#) [FCN-360C040-C](#) [FCN-723J004/1](#) [MIS-048-01-F-D-DP-K](#) [832-10-034-10-001000](#) [93696-325LF](#) [11828-1FA](#) [AXK630345P](#) [18097-0013](#) [ICA-328STT](#) [2007042-2](#) [304400-2](#) [FCN-214Q030-G/0](#) [FCN-215Q040-G/0](#) [FCN-230C068-ESA](#) [FCN-234P048-G/0](#) [FCN-235D050-G/C](#) [FCN-360A3](#) [FCN-360C040-B](#) [210-93-314-41-105000](#) [2-22603-0](#) [379-064-521-202](#) [MDF7-12P-2.54DSA\(01\)](#) [MDF7-16P-2.54DS\(56\)](#) [MDF7-40DP-2.54DSA\(55\)](#) [MDF7-8P-2.54DSA\(55\)](#) [MDF7B-16P-2.54DSA\(55\)](#) [AXG720047](#) [5031084030](#)